

Oversight / NHS

FHWA REGION VIII OVERSIGHT? NO YES
 NATIONAL HIGHWAY SYSTEM? NO YES

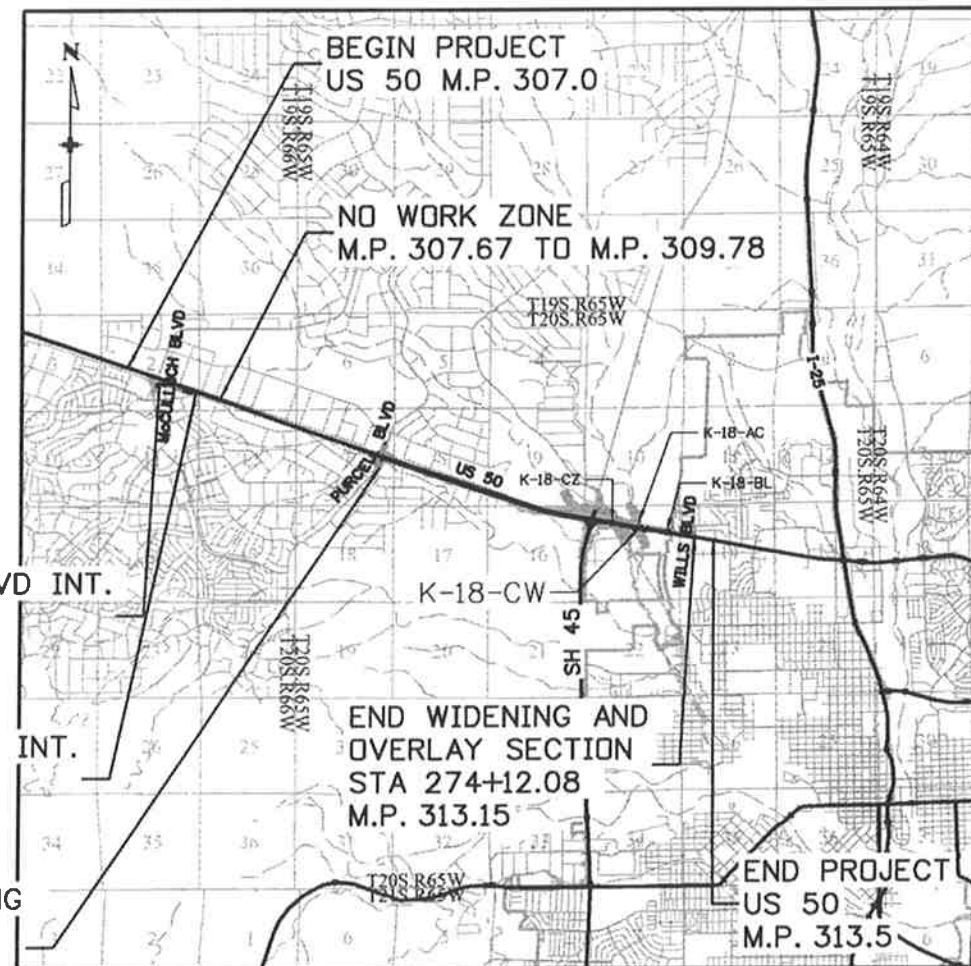
DEPARTMENT OF TRANSPORTATION STATE OF COLORADO

Related Projects:
 P. E. UNDER PROJECT: FSA 0503-081
 Project Number: 19751
 Project Code:
R.O.W. Projects:
 R.O.W. Project Description: FSA 0503-081
 19751

TABULATION OF LENGTH & DESIGN DATA

STATION	FEET	
	ROADWAY	MAJOR STR.
BEGIN FSA 0503-081 ON US 50		
BEGIN APPROACH TO PROJECT ON US 50 = M.P. 307.0		
BEGIN McCULLOCH BLVD INTERSECTION IMPROVEMENTS STA. 700+37.13 = MP 307.34		
END McCULLOCH BLVD INTERSECTION IMPROVEMENTS STA. 721+41.51 = MP 307.67	1,754.0	
NO WORK ZONE MP 307.67 TO 309.78		
BEGIN US 50 WIDENING AND OVERLAY STA. 97+13.10 = MP 309.78	14,560.5	
BEGIN STRUCTURE K-18-CW STA. 242+73.64 = M.P. 312.56		233.1
END STRUCTURE K-18-CW STA. 245+06.76 = MP 312.60		
END US 50 WIDENING AND OVERLAY STA. 274+12.08 = MP 313.15	2,901.6	
BEGIN APPROACH TO PROJECT = MP 313.5 END FSA 0503-081 ON US 50		
TOTAL	19,216.2	233.1
SUMMARY OF PROJECT LENGTH	FEET	MILES
MAJOR STRUCTURE	233.1	0.04
PROJECT GROSS LENGTH	19,449.3	3.7

HIGHWAY CONSTRUCTION BID PLANS OF PROPOSED FEDERAL AID PROJECT NO. FSA 0503-081 UNITED STATES HIGHWAY NO. 50 PUEBLO COUNTY CONSTRUCTION PROJECT CODE NO.19751



SHEET NO.	INDEX OF SHEETS
(R-2) (R-1) 1b	TITLE SHEET
2	STANDARD PLANS LIST
3	GENERAL NOTES
4-9	TYPICAL SECTIONS
10-11	SUMMARY OF APPROXIMATE QUANTITIES
(R-1) 12a	SUMMARY OF APPROXIMATE QUANTITIES
13	SUMMARY OF APPROXIMATE QUANTITIES
(R-2) 14b	SUMMARY OF APPROXIMATE QUANTITIES
15	SUMMARY OF APPROXIMATE QUANTITIES
(R-2) (R-1) 16b	SUMMARY OF APPROXIMATE QUANTITIES
(R-1) 17a	SUMMARY OF APPROXIMATE QUANTITIES
18-20	TABULATIONS
(R-2) 21b	TABULATIONS
22-27	TABULATIONS
28-43	UTILITY PLAN
44-45	GEOMETRY PLAN
46-53	REMOVALS AND RESETS
54-70	ROADWAY PLAN AND PROFILE
71-77	INTERSECTION DETAILS
78-89	GEOTECHNICAL/BORING SHEETS
90-91	ENGINEERING GEOLOGY
92-96	SURVEY CONTROL DIAGRAM
97-101	RIGHT OF WAY PLANS
102-117	GRADING AND DRAINAGE PLANS
118-119	POND DETAILS
120-128	DRAINAGE DETAILS
129-140	CROSS PIPE PLAN AND PROFILES
141-144	STORM SYSTEM PLAN AND PROFILE
145-146	STORM SYSTEM LATERAL PROFILES
147-178	BRIDGE PLANS
179	RAILROAD BRIDGE SLOPE PAVING MODIFICATIONS
180	HEADWALL DETAIL
(R-1) 181a-182a	ENVIRONMENTAL PLAN
183-200	ENVIRONMENTAL PLAN
200-204	STORMWATER MANAGEMENT NOTES
205-220	STORMWATER MANAGEMENT PLAN - INITIAL
221-236	STORMWATER MANAGEMENT PLAN - FINAL
(R-2) (R-1) 237b	TABULATION OF TRAFFIC ENGINEERING ITEMS
238-245	CONSTRUCTION PHASING
246-278	CONSTRUCTION TRAFFIC CONTROL (CTC)
279-282	TRAFFIC SIGNAL PLANS AND TABULATION
283-285	SIGNING AND PAVEMENT MARKING TABULATION
286-301	SIGNING AND STRIPING PLAN
302-303	CLASS III CROSS SECTIONS
(R-2) 304b	ITS PLAN AND TABULATION

DESIGN DATA	US 50 (EB)
MAXIMUM RADIUS OF CURVE	6,844 FT.
MAXIMUM GRADE	5.20%
MINIMUM S.S.D. HORIZONTAL	495 FT.
MINIMUM S.S.D. VERTICAL	495 FT.
MAXIMUM DESIGN SPEED	65 MPH
2035 DESIGN TRAFFIC	DHV = 4,493 vph ADT = 43,425 vpd
DHV TRUCK %	6.40%
CLEAR ZONE DISTANCE (TANGENT)	24 FT.
CLEAR ZONE DISTANCE (XXX MIN. RADIUS)	24 FT.
CONSTRUCTION CLEAR ZONE (MIN 18')	18 FT.

BEGIN McCULLOCH BLVD INT. IMPROVEMENTS
M.P. 307.34

END McCULLOCH BLVD INT. IMPROVEMENTS
M.P. 307.67

BEGIN US 50 WIDENING AND OVERLAY
STA 97+13.10
M.P. 309.78

PROJECT LOCATION MAP



Print Date: 11/25/2014

File Name: 19056DES_TitleSht_Revision_2.dgn

Horiz. Scale: 1:1 Vert. Scale: As Noted

Unit Information DTD

JFS&A
 J. F. SATO AND ASSOCIATES
 5898 South Rapp Street
 Littleton, Colorado 80120

Sheet Revisions

Date:	Comments	Init.
11/20/14	Revision 1	GV
11/26/14	Revision 2	GV

Colorado Department of Transportation



Region 2

902 Erie Avenue
 Pueblo, CO 81001
 Phone: 719-562-5509 FAX: 719-546-5702

DTD

As Constructed

No Revisions:

Revised:

Void:

Contract Information

Contractor:

Resident Engineer:

Project Engineer:

PROJECT STARTED: / / ACCEPTED: / /

Comments:

Project No./Code

FSA 0503-081

19751

Sheet Number 1b

aboonier1 2:51:06 PM \\nas1\09000...jobs\0940E CDDT US50 Design\04...Design\19056\Design\Drawings\01_08_General\19056DES_TitleSht_Revision_2.dgn

d:\nasa\0900...jobs\094DE CDDT US50 Design\19056DES_SAQ.dgn

INDEX			CONTRACT ITEM NO.	CONTRACT ITEM	UNIT	ROADWAY										STRUCTURE K-18-CW		PROJECT TOTALS	
BOOK	PAGE	SHEET				PLAN	AS CONST.											PLAN	AS CONST.
			614-87011	Fiber Optic Cable (Single Mode) (24 Fiber)	LF	50												50	
			614-87524	Splice Fiber Optic Cable (24 Strand)	EACH	1												1	
			618-00142	Prestressed Concrete I (BT42)	LF										730			730	
			620-00002	Field Office (Class 2)	EACH	1												1	
			620-00012	Field Laboratory (Class 2)	EACH	1												1	
			620-00020	Sanitary Facility	EACH	1												1	
			621-00450	Detour Pavement	SY	611												611	
			625-00000	Construction Surveying	L S	1												1	
			626-00000	Mobilization	L S	1												1	
			626-01000	Public Information Services	L S	1												1	
			627-00007	Epoxy Pavement Marking (Special)	GAL	179												179	
			627-00011	Pavement Marking Paint (Waterborne)	GAL	400												400	
			627-30205	Thermoplastic Pavement Marking (Word-Symbol)	SF	93												93	
			627-30210	Thermoplastic Pavement Marking (Xwalk-Stopline)	SF	903												903	
			630-00000	Flagging	HOUR	3,808												3,808	
			630-00007	Traffic Control Inspection	DAY	127												127	
			630-00012	Traffic Control Management	DAY	238												238	
			630-80001	Flashing Beacon (Portable)	EACH	10												10	
			630-80335	Barricade (Type 3 M-A) (Temporary)	EACH	3												3	
			630-80341	Construction Traffic Sign (Panel Size A)	EACH	43												43	
			630-80342	Construction Traffic Sign (Panel Size B)	EACH	91												91	
			630-80344	Construction Traffic Sign (Special)	SF	165												165	
			630-80358	Advance Warning Flashing or Sequencing Arrow Panel (C Type)	EACH	6												6	
			R-2 630-80355	Portable Message Sign Panel	EACH	4												4	
			R-1 630-80359	Portable Message Sign Panel	DAY														
			R-1 630-80363	Drum Channelizing Device (With Light) (Flashing)	EACH	75 200												75 200	
			630-80370	Concrete Barrier (Temporary)	LF	3,000												3,000	
			630-80380	Traffic Cone	EACH	100												100	
			R-2 630-85040	Mobile Attenuator	EACH	2												2	
			R-2 630-85011	Impact Attenuator (Temporary)	DAY	50 200												50 200	
				FORCE ACCOUNT =====															
			700-70010	F/A Minor Contract Revisions	F A	1												1	
			700-70011	F/A Partnering	F A	1												1	
			700-70012	F/A Asphalt Pavement Incentive	F A	1												1	

Print Date: 11/24/2014
 File Name: Rev_1_19056DES_SAQ.dgn
 Horiz. Scale: 1:200 Vert. Scale: As Noted

JFS&A
 J. F. SATO AND ASSOCIATES
 5898 South Ropp Street
 Littleton, Colorado 80120

Sheet Revisions		
Date:	Comments	Init.
11/20/14	Quantity Change	GV
11/26/14	Qty & Code Change	GV

Colorado Department of Transportation
 902 Erie Avenue
 Pueblo, CO 81001
 Phone: 719-562-5509 FAX: 719-546-5702

Region 2 **DTD**

As Constructed

No Revisions:
 Revised:
 Void:

**US 50 WEST
 PURCELL BLVD. TO WILLS BLVD.**

Designer:
 Detailer:
 Subset:

Structure Numbers
 Subset Sheets: of

Project No./Code
 FSA 0503-081
 19751
 Sheet Number 16b

606-00301 606-00716 606-01370 ~~606-01460~~ ^{R-2} 606-02005 ~~606-21010~~ ^{R-2} 606-20014

Tabulation of Guardrail									
Location	Side	Guardrail Type 3 (6'-3" Post Spacing)	Guardrail Type 7 (Style CA) (Special)	Transition Type 3G	Median Terminal	End Anchorage (Flared)	End Anchorage (Tensioned Cable Barrier)	Tensioned Cable Barrier (TL-4)	Comment
		LF	LF	EA	Each	Each	Each	LF	
US 50									
113+58.81 TO 185+00	LT				2		2	7,142	MEDIAN TERMINAL FOR CABLE BARRIER
241+41.94 TO 242+92.98	RT	162.50		1		1			BRIDGE APPROACH
258+28.10 TO 259+43.45	RT	162.50	115	1		1			RR BRIDGE UNDERPASS
PROJECT TOTALS		325	115	2	2	2	2	7,142	

Note: The guardrail blocks shall be synthetic and the post shall be steel.

612-00001 612-00002 612-00003

Tabulation of Delineators										
Location	Side	Spacing (FT)	Curve Radius (FT)	Type I		Type II		Type III		Notes
				Crystal Each	Yellow Each	Crystal Each	Yellow Each	Yellow Each	Blue/Yellow Each	
US 50										
100+00 TO 185+79.29		8579.29	Lt.&Rt.	528	17	17				4
185+79.29 TO 196+14.94		1035.65	Lt.&Rt.	247	7	7				
196+14.94 TO 206+43.45		1028.51	Lt.&Rt.	528	4	4				
206+43.45 TO 216+97.00		543	Lt.&Rt.	100	11	11	8	8		
217+80.11 TO 231+50.82		896	Lt.&Rt.	100	9	9	11	11		
231+50.82 TO 241+00		949.18	Lt.&Rt.	528	4	4			2	
241+00 TO 242+92.46		192.46	Lt.&Rt.	37.5	3	3				
256+77.58 TO 259+43.08			Rt.	37.5	3					
SUBTOTALS					58	55	19	19	2	4
PROJECT TOTALS					113	55	38	19	2	4

For Information Only: It is Estimated that 108 Each, Removal of Delineators, will be required.

Print Date: 11/25/2014	Sheet Revisions	Colorado Department of Transportation	As Constructed	US 50 WEST PURCELL BLVD. TO WILLS BLVD. TAB OF GUARDRAIL & DELINEATORS	Project No./Code
File Name: 19056DES_Guardrail_n_Delineators.dgn	Date: 11/26/14	 902 Erie Avenue Pueblo, CO 81001 Phone: 719-562-5509 FAX: 719-546-5702 Region 2	No Revisions:	Designer: GV	FSA 0503-081
Horiz. Scale: 1:1 Vert. Scale: As Noted	Item Del. & Added		Revised:	Detailer: GV	19751
JFS&A			Void:	Subset: TAB	Structure Numbers
J. F. SATO AND ASSOCIATES 5898 South Rapp Street Littleton, Colorado 80120		DTD	Subset Sheets: TAB4 of 10		

d:\n001\09000...Jobs\0940E CDDT US50 Design\04_Design\19056DES\Design\Drawings\Taba\19056DES_Guardrail_n_Delineators.dgn

TABULATION OF TRAFFIC ENGINEERING ITEMS

ITEM NUMBER	ITEM DESCRIPTION	UNIT	PROJECT TOTALS
202-00040	REMOVAL OF ELECTRICAL CONDUIT *	LF	30
202-00250	REMOVAL OF PAVEMENT MARKING *	SF	12,700
202-00720	REMOVAL OF CCTV CAMERA	EA	1
202-00750	REMOVAL OF LUMINAIRE	EA	4
202-00805	REMOVAL OF OVERHEAD SIGN STRUCTURE *	EA	1
202-00810	REMOVE OF GROUND SIGN	EA	46
202-00825	REMOVAL OF FLASING BEACON	EA	2
202-00827	REMOVAL OF PULL BOX *	EA	6
202-00831	REMOVAL OF TRAFFIC SIGNAL HEAD	EA	2
202-00840	REMOVAL OF TRAFFIC SIGNAL POLE	EA	3
202-00858	REMOVAL OF PEDESTAL POLE	EA	1
202-00860	REMOVAL OF PEDESTRIAN PUSH BUTTON	EA	2
210-00476	RESET MICROWAVE VEHICLE RADAR DETECTOR (MVRD)	EA	3
210-00750	RESET LIGHT STANDARD *	EA	1
210-00815	RESET SIGN PANEL	EA	1
210-00825	RESET FLASHING BEACON	EA	2
210-00858	RESET PEDESTAL POLE	EA	1
210-00890	RESET INTERSECTION DETECTION SYSTEM (CAMERA)	EA	6
503-00012	DRILLED CAISSON (12 INCH)	LF	7
503-00018	DRILLED CAISSON (18 INCH)	LF	4
503-00036	DRILLED CAISSON (36 INCH)	LF	19
503-00048	DRILLED CAISSON (48 INCH)	LF	74
604-39050	MANHOLE (TRAFFIC MANAGEMENT SYSTEM)	EA	4
613-00200	2 INCH ELECTRICAL CONDUIT	LF	90
613-00206	2 INCH ELECTRICAL CONDUIT (BORED)	LF	659
613-00306	3 INCH ELECTRICAL CONDUIT (BORED)	LF	800
613-07023	PULL BOX (24"X36"X24")	EA	8
613-07039	PULL BOX (30"X48"X18")	EA	1
613-10000	WIRING	LS	1
613-13006	LUMINAIRE (LED) (8500 LUMENS)	EA	4
613-40010	LIGHT STANDARD FOUNDATION *	EA	1
614-00011	SIGN PANEL (CLASS I)	SF	131
614-00012	SIGN PANEL (CLASS II)	SF	335
614-00013	SIGN PANEL (CLASS III)	SF	385
614-00615	STEEL SIGN POST (W6X15)	LF	128
614-01502	STEEL SIGN SUPPORT (2 IN RD) (POST AND SOCKET)	LF	70
614-01572	STEEL SIGN SUPPORT (2-1/2 IN RD SCH 40) (POST AND SLIP BASE)	LF	290
614-03002	CONCRETE FOOTING (TYPE 2)	EA	8
614-10147	VARIABLE MESSAGE SIGN LED (OVERHEAD)	EA	1
614-32400	MONOTUBE OVERHEAD SIGN CANTILEVER (24 INCH DIAMETER)	EA	1
614-70150	PEDESTRIAN SIGNAL FACE (16) (COUNTDOWN)	EA	8
614-70336	TRAFFIC SIGNAL FACE (12-12-12)	EA	11
614-70448	TRAFFIC SIGNAL FACE (12-12-12-12)	EA	3
614-72860	PEDESTRIAN PUSH BUTTON	EA	7
614-72863	PEDESTRIAN PUSH BUTTON POST ASSEMBLY	EA	1
614-81150	TRAFFIC SIGNAL-LIGHT POLE STEEL (1-50 FOOT MAST ARM)	EA	1
614-81160	TRAFFIC SIGNAL-LIGHT POLE STEEL (1-60 FOOT MAST ARM)	EA	2
614-87011	FIBER OPTIC CABLE (SINGLE MODE) (24 STRAND)	LF	50
614-87524	SPLICE FIBER OPTIC CABLE (24 STRAND)	EA	1
621-00450	DETOUR PAVEMENT	SY	611

* FOR INFO ONLY

NOTE: SCHEDULE OF TRAFFIC CONTROL DEVICES PROVIDED FOR INFORMATION ONLY.

TABULATION OF TRAFFIC ENGINEERING ITEMS

ITEM NUMBER	ITEM DESCRIPTION	UNIT	PROJECT TOTALS
627-00007	EPOXY PAVEMENT MARKING (SPECIAL)	GAL	179
627-00011	PAVEMENT MARKING PAINT (WATERBORNE)	GAL	400
627-30405	PERFORMED THERMOPLASTIC PAVEMENT MARKING (WORD-SYMBOL)	SF	93
627-30410	PREFORMED THERMOPLASTIC PAVEMENT MARKING (XWALK-STOPLINE)	SF	903
630-00000	FLAGGING	HR	3,808
630-00007	TRAFFIC CONTROL INSPECTION	DAY	127
630-00012	TRAFFIC CONTROL MANAGEMENT	DAY	238
630-80001	FLASHING BEACON (PORTABLE)	EA	10
630-80335	BARRICADE (TYPE 3 M-A) (TEMPORARY)	EA	3
630-80341	CONSTRUCTION TRAFFIC SIGN (PANEL SIZE A)	EA	43
630-80342	CONSTRUCTION TRAFFIC SIGN (PANEL SIZE B)	EA	91
630-80344	CONSTRUCTION TRAFFIC SIGN (SPECIAL)	SF	165
630-80358	ADVANCE WARNING FLASHING OR SEQUENCING ARROW PANEL (C TYPE)	EA	6
R-2 630-80355	PORTABLE MESSAGE SIGN	EA	4
630-80363	DRUM CHANNELIZING DEVICE (WITH LIGHT) (FLASHING)	EA	75
630-80370	CONCRETE BARRIER (TEMPORARY)	LF	3,000
630-80380	TRAFFIC CONE	EA	100
R-2 630-85011	IMPACT ATTENUATOR (TEMPORARY)	DAY	56
630-85041	MOBILE ATTENUATOR	EA	2
			200
			100

SCHEDULE OF TRAFFIC CONTROL DEVICES

SIGNS					
SIGN CODE	LEGEND	DIMENSION	PANEL SIZE		
			A	B	Special
			EA	EA	SF
FASTER	COLORADO AT WORK SIGN (SPECIAL)	66X60			165
G20-5	WORK ZONE	36X24	20		
G20-10	XYZ/CONSTRUCTION/THANKS YOU/555-555-5555	48X48		8	
G20-11	ROAD WORK INFORMATION	48X48		7	
M1-4	U.S. ROUTE SIGN	36X36	1		
M1-5A	STATE ROUTE SIGN	36X36	1		
M3-3	CARDINAL DIRECTION	36X18	1		
M3-4	CARDINAL DIRECTION	36X18	1		
M5-1L	ADVANCE TURN ARROW	30X21	2		
R1-2	YIELD	36X36	1		
R2-1	SPEED LIMIT	36X48		21	
R2-6(ap)	FINES/DOUBLE	36X24	6		
R3-7r	MANDATORY MOVEMENT RIGHT	30X30	1		
R4-1	DO NOT PASS	36X48		2	
R11-2	ROAD/CLOSED	48X30		4	
R52-6a	BEGIN FINES DOUBLE IN WORK ZONE	36X48		7	
R52-6b	END FINES DOUBLE IN WORK ZONE	36X48		8	
W1-2I	HORIZONTAL ALIGNMENT LEFT	48X48		2	
W1-4BL	REVERSE CURVE	48X48		2	
W1-4I	REVERSE CURVE	48X48		1	
W1-6r	ONE-DIRECTION LARGE ARROW RIGHT	60X30		2	
W1-9-3a	MIDDLE LANE CLOSED	48X48		2	
W3-3	SIGNAL AHEAD	48X48		2	
W4-1r	MERGE RIGHT	48X48		1	
W5-1	ROAD NARROWS	48X48		2	
W5-2	BRIDGE NARROWS	48X48		2	
W9-2I	LANE ENDS MERGE LEFT	48X48		1	
W12-1	DOUBLE ARROW	36X36	1		
W16-2a	ADVANCE DISTANCE	30X24	8		
W20-1	ROAD WORK	48X48		8	
W21-5	SHOULDER WORK	48X48		2	
W24-1aL	DOUBLE REVERSE CURVE LEFT	48X48		5	
W24-1aR	DOUBLE REVERSE CURVE RIGHT	48X48		2	
	PROJECT TOTALS		43	91	165

Print Date: 11/25/2014
 File Name: I9056_Traffic_Engineering_Items.dgn
 Horiz. Scale: 1:30 Vert. Scale: As Noted

JFS&A
 J. F. SATO AND ASSOCIATES
 5898 South Rapp Street
 Littleton, Colorado 80120

Sheet Revisions			
Date:	Comments	Init.	
11/20/14	Qty Change	GV	
11/26/14	Qty & Code Change	GV	

Colorado Department of Transportation
 902 Erie Avenue
 Pueblo, CO 81001
 Phone: 719-562-5509 FAX: 719-546-5702
 Region 2 DTD

As Constructed
 No Revisions:
 Revised:
 Void:

US 50 WEST
 McCULLOCH BLVD. TO WILLS BLVD.
 TRAFFIC ENGINEERING ITEMS

Designer: ACE
 Detailer: ACE
 Subset: TR

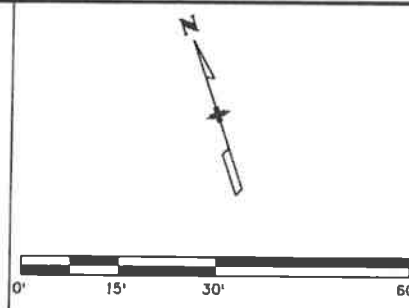
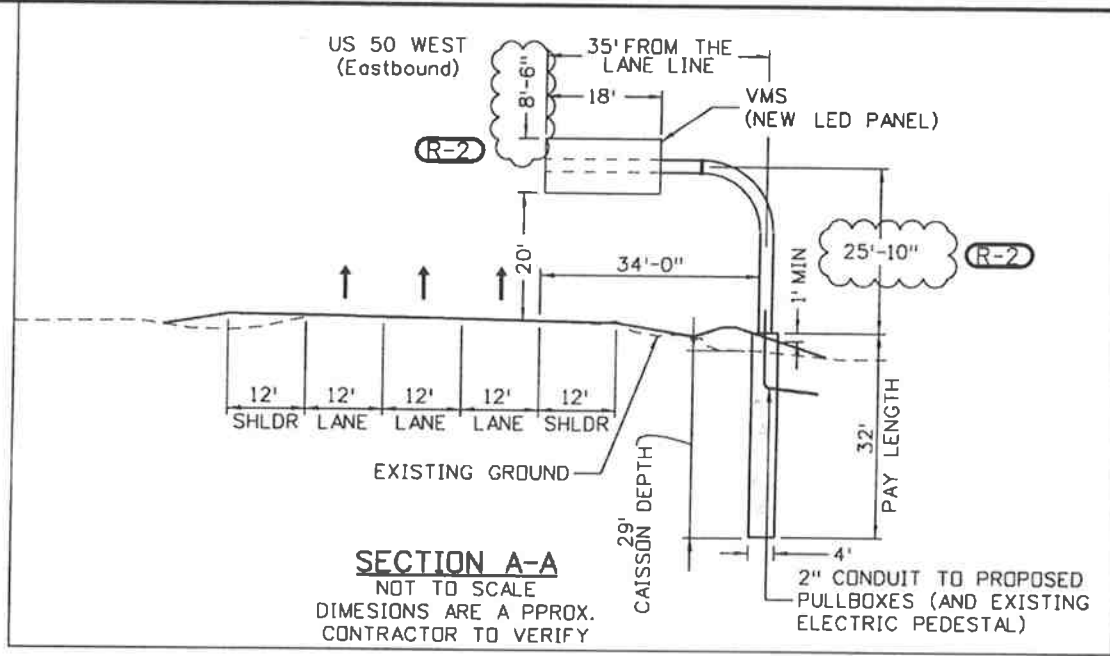
Structure Numbers
 Subset Sheets: TR1 of 1

Project No./Code
 FSA 0503-081
 19751
 Sheet Number 237b

d:\naal\0900...Jobs\0940E CDDT US50 Design\04...Design\19056\Drawings\26-Schedule_of_Traffic_Items\19056_Traffic_Engineering_Items.dgn



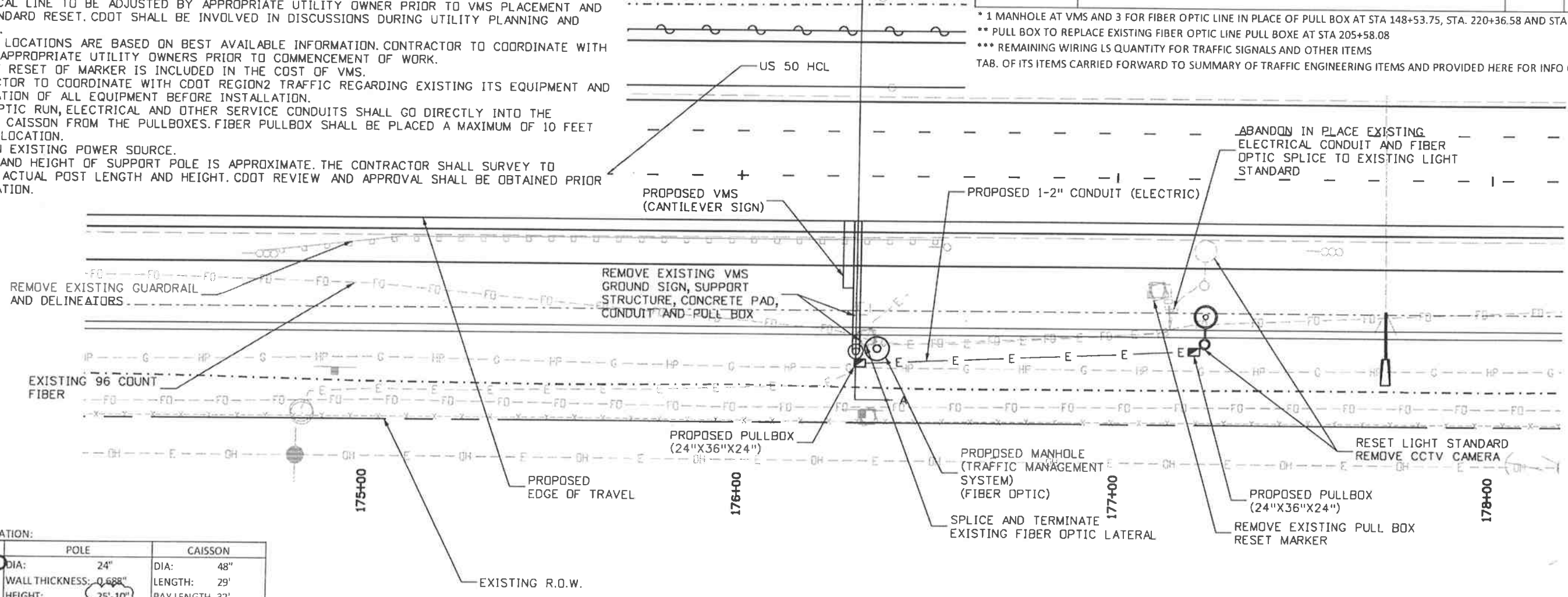
Know what's below.
Call before you dig.



TABULATION OF ITS ENGINEERING ITEMS			
ITEM NO.	DESCRIPTION	UNIT	QTY.
202-00720	REMOVAL OF CCTV CAMERA	EA	1
202-00750	REMOVAL OF LUMINAIRE	EA	1
202-00805	REMOVAL OF OVERHEAD SIGN STRUCTURE	EA	1
202-00827	REMOVAL OF PULL BOX	EA	2
210-00750	RESET LIGHT STANDARD	EA	1
503-00048	DRILLED CAISSON (48 INCH)	LF	32
604-39050	MANHOLE (TRAFFIC MANAGEMENT SYSTEM) *	EA	4
613-00200	2 INCH ELECTRICAL CONDUIT	LF	90
613-07023	PULL BOX (24"X36"X24")	EA	2
613-07039	PULL BOX (30"X48"X18")**	EA	1
613-10000	WIRING***	LS	0.25
613-13006	LUMINARE (LED) (8500 LUMENS)	EA	1
613-40010	LIGHT STANDARD FOUNDATION	EA	1
614-10147	VARIABLE MESSAGE SIGN LED (OVERHEAD)	EA	1
614-32400	MONOTUBE OVERHEAD SIGN CANTILEVER (24 INCH DIAMETER)	EA	1
614-87011	FIBER OPTIC CABLE (SINGLE MODE) (24 STRAND)	LF	50
614-87524	SPLICE FIBER OPTIC CABLE (24 STRAND)	EA	1

* 1 MANHOLE AT VMS AND 3 FOR FIBER OPTIC LINE IN PLACE OF PULL BOX AT STA 148+53.75, STA. 220+36.58 AND STA 246+42.57
 ** PULL BOX TO REPLACE EXISTING FIBER OPTIC LINE PULL BOX AT STA 205+58.08
 *** REMAINING WIRING LS QUANTITY FOR TRAFFIC SIGNALS AND OTHER ITEMS
 TAB. OF ITS ITEMS CARRIED FORWARD TO SUMMARY OF TRAFFIC ENGINEERING ITEMS AND PROVIDED HERE FOR INFO ONLY

- NOTE:
- 1) ELECTRICAL LINE TO BE ADJUSTED BY APPROPRIATE UTILITY OWNER PRIOR TO VMS PLACEMENT AND LIGHT STANDARD RESET. CDOT SHALL BE INVOLVED IN DISCUSSIONS DURING UTILITY PLANNING AND PLACEMENT.
 - 2) UTILITY LOCATIONS ARE BASED ON BEST AVAILABLE INFORMATION. CONTRACTOR TO COORDINATE WITH CDOT AND APPROPRIATE UTILITY OWNERS PRIOR TO COMMENCEMENT OF WORK.
 - 3) COST OF RESET OF MARKER IS INCLUDED IN THE COST OF VMS.
 - 4) CONTRACTOR TO COORDINATE WITH CDOT REGION2 TRAFFIC REGARDING EXISTING ITS EQUIPMENT AND FINAL LOCATION OF ALL EQUIPMENT BEFORE INSTALLATION.
 - 5) FIBER OPTIC RUN, ELECTRICAL AND OTHER SERVICE CONDUITS SHALL GO DIRECTLY INTO THE STRUCTURE CAISSON FROM THE PULLBOXES. FIBER PULLBOX SHALL BE PLACED A MAXIMUM OF 10 FEET FROM VMS LOCATION.
 - 6) MAINTAIN EXISTING POWER SOURCE.
 - 7) LENGTH AND HEIGHT OF SUPPORT POLE IS APPROXIMATE. THE CONTRACTOR SHALL SURVEY TO DETERMINE ACTUAL POST LENGTH AND HEIGHT. CDOT REVIEW AND APPROVAL SHALL BE OBTAINED PRIOR TO FABRICATION.



STRUCTURE INFORMATION:

VMS	POLE	CAISSON
LENGTH: 18' (R-2)	DIA: 24"	DIA: 48"
WIDTH: 8'-6"	WALL THICKNESS: 0.688"	LENGTH: 29'
DEPTH: 46'	HEIGHT: 25'-10"	PAY LENGTH 32'
WEIGHT: 3000 LBS	LENGTH: 35' (R-2)	

Print Date: 11/25/2014
 File Name: 19056_ITS-01_Revision_2.dgn
 Horiz. Scale: 1:30 Vert. Scale: As Noted

JFS J. F. SATO AND ASSOCIATES
 5898 South Ropp Street
 Littleton, Colorado 80120

Sheet Revisions			
Date:	Comments	Init.	
11/26/14	Item Del./Add; Dim. Chg	GV	

Colorado Department of Transportation
 902 Erie Avenue
 Pueblo, CO 81001
 Phone: 719-562-5509 FAX: 719-546-5702
 Region 2 DTD

As Constructed
No Revisions:
Revised:
Void:

US 50 WEST
ITS
VMS

Designer: GV
 Detailer: ACE
 Subset: ITS

Structure Numbers
 Subset Sheets: ITS1 of 1

Project No./Code
FSA 0503-081
19751
Sheet Number 304b

d:\noat\09000\jobs\0940E CDOT US50 Design\04_Design\19056\Design\Drawings\32_ITS\19056_ITS-01_Revision_2.dgn