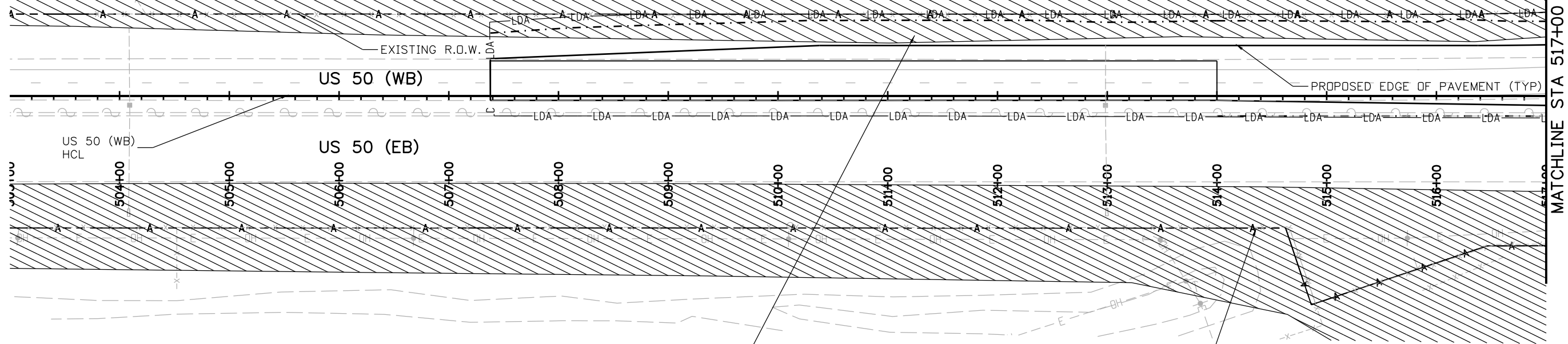
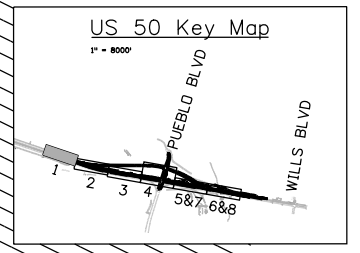
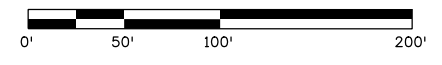




Know what's below.
Call before you dig.



REFER TO CDDT'S BTPD POLICY AND SECTION 240 BLACK-TAILED PRAIRIE DOG (BTPD) MANAGEMENT FOR WORK WITHIN LIMITS OF DISTURBANCE AND (BTPD) HABITAT



LEGEND

- ★ TREES
- BIRD NESTS
- NOXIOUS WEED ABBREVIATIONS
- T TAMARISK
- HC HOARY CRESS
- LS LEAFY SPURGE
- PP PERENNIAL PEPPERWEED
- (SEE ENVIRONMENTAL NOTES FOR TREATMENT INFORMATION)
- WETLANDS
- NOXIOUS WEEDS
- PRAIRIE DOGS
- LDA LIMITS OF DISTURBANCE
- TOE OF FILL
- TOP OF CUT

Print Date: 2/8/2017
 File Name: 20344-LAND_ENVI_01.dgn
 Horiz. Scale: 1:100 Vert. Scale: As Noted

FELSBURG HOLT & ULLEVIG
 6300 South Syracuse Way
 Suite 600
 Centennial, CO 80111
 (303) 721-1440

Sheet Revisions		
Date:	Comments	Init.

Colorado Department of Transportation

Region 2

902 Erie Avenue
 Pueblo, CO 81001
 Phone: 719-562-5509 FAX: 719-546-5702

DTD

As Constructed

No Revisions:
 Revised:
 Void:

US 50 WEST WESTBOUND ENVIRONMENTAL PLANS

Designer:	KD	Structure Numbers	
Detailer:	KD	Subset Sheets:	1 of 8
Sheet Subset:	ENV		

Project No./Code

FSA 0503-085

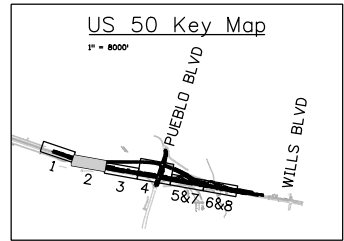
20344

Sheet Number **149**

kate.oberleas 4:35:14 PM c:\projects\wise\pwrz\working\1850380\20344-LAND_ENVI_01.dgn
 CDDT-DefaultPrinter_V8i.plt cdfg CDDT-PenTable.tbl
 2/8/2017



Know what's below.
Call before you dig.



REFER TO CDOT'S BTPD POLICY AND SECTION 240 BLACK-TAILED PRAIRIE DOG (BTPD) MANAGEMENT FOR WORK WITHIN LIMITS OF DISTURBANCE AND BTPD HABITAT

EXISTING R.O.W.

ENTRANCE RAMP

PROPOSED EOP (TYP)

MATCHLINE STA 517+00

MATCHLINE STA 530+00

US 50 (WB)

US 50 (EB)

EXISTING R.O.W.

518+00

519+00

520+00

521+00

522+00

523+00

524+00

525+00

526+00

527+00

528+00

529+00

PC 520+31.98

PY 525+45.08



LEGEND

★ TREES

● BIRD NESTS

[Symbol] WETLANDS

[Symbol] NOXIOUS WEEDS

[Symbol] PRAIRIE DOGS

[Symbol] LDA LIMITS OF DISTURBANCE

[Symbol] TOE OF FILL

[Symbol] TOP OF CUT

NOXIOUS WEED ABBREVIATIONS

- T TAMARISK
- HC HOARY CRESS
- LS LEAFY SPURGE
- PP PERENNIAL PEPPERWEED

(SEE ENVIRONMENTAL NOTES FOR TREATMENT INFORMATION)

Print Date: 2/8/2017

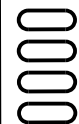
File Name: 20344-LAND_ENVI_02.dgn

Horiz. Scale: 1:100.5

Vert. Scale: As Noted



6300 South Syracuse Way
Suite 600
Centennial, CO 80111
(303) 721-1440



Sheet Revisions

Date:	Comments	Init.

Colorado Department of Transportation



902 Erie Avenue
Pueblo, CO 81001
Phone: 719-562-5509 FAX: 719-546-5702

Region 2

DTD

As Constructed

No Revisions:

Revised:

Void:

US 50 WEST WESTBOUND ENVIRONMENTAL PLANS

Designer:	KD	Structure	
Detailer:	KD	Numbers	
Sheet Subset:	ENV	Subset Sheets:	2 of 8

Project No./Code

FSA 0503-085

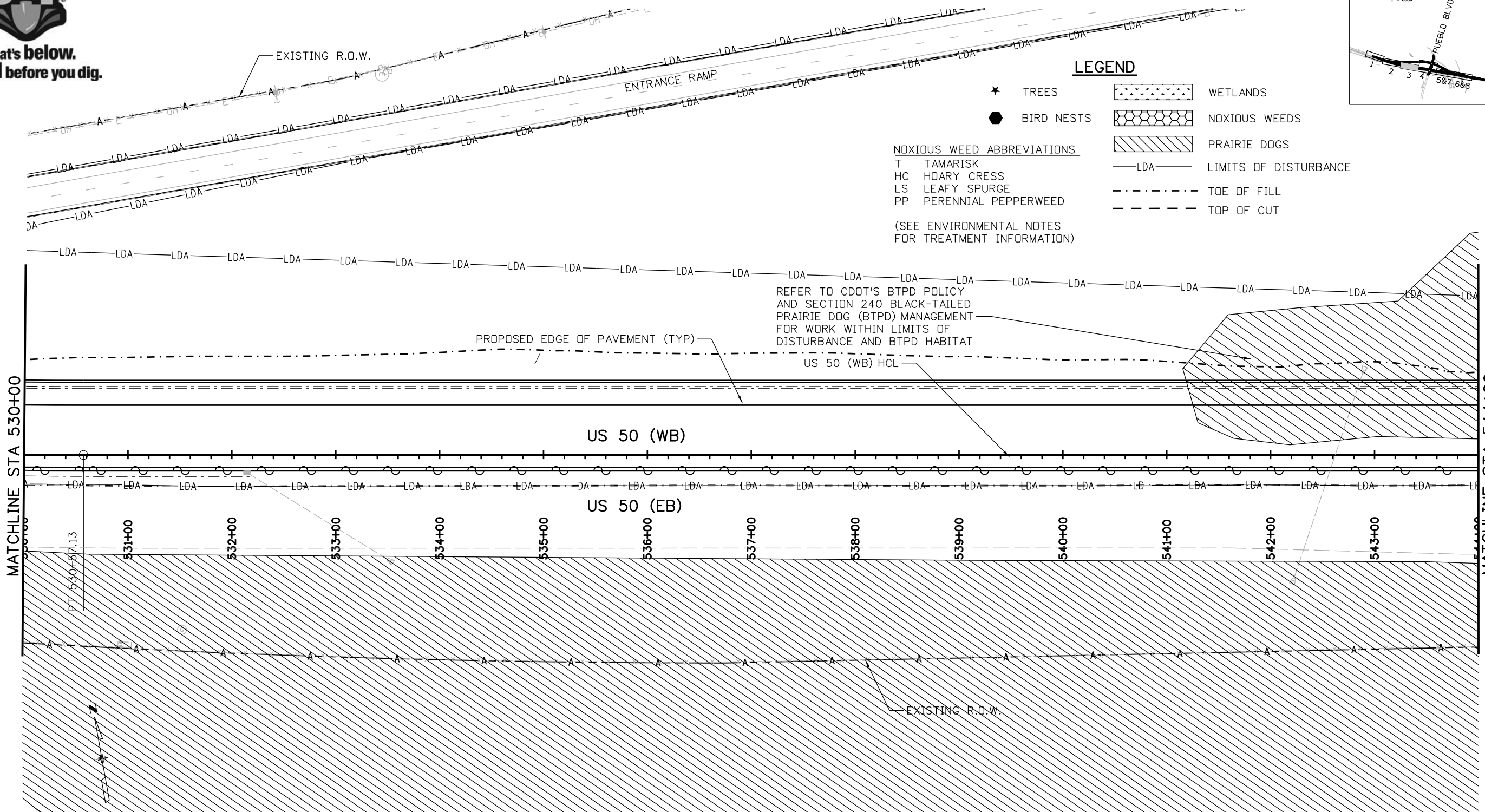
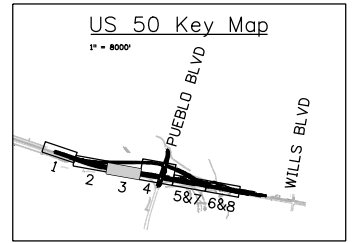
20344

Sheet Number 150

kate.oberleas 4:08:14 PM c:\projects\wise\pwz_working\dl850380\20344-LAND_ENVI_02.dgn
2/8/2017 CDDT-DefaultPrinter_V6\picfig CDDT-Pen Table.tbl



Know what's below.
Call before you dig.



LEGEND

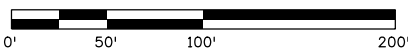
- ★ TREES
- BIRD NESTS
- WETLANDS
- NOXIOUS WEEDS
- PRAIRIE DOGS
- LDA LIMITS OF DISTURBANCE
- TOE OF FILL
- TOP OF CUT

NOXIOUS WEED ABBREVIATIONS

- T TAMARISK
- HC HOARY CRESS
- LS LEAFY SPURGE
- PP PERENNIAL PEPPERWEED

(SEE ENVIRONMENTAL NOTES FOR TREATMENT INFORMATION)

REFER TO CDOT'S BTPD POLICY AND SECTION 240 BLACK-TAILED PRAIRIE DOG (BTPD) MANAGEMENT FOR WORK WITHIN LIMITS OF DISTURBANCE AND BTPD HABITAT



kate.oberleics 4:11:35 PM c:\projectwise\pwz_working\dl850380\20344-LAND_ENVI_03.dgn
CDOT-DefaultPrinter_V8i.plt.ctb CDDT-PenTable.tbl
2/8/2017

Print Date: 2/8/2017
 File Name: 20344-LAND_ENVI_03.dgn
 Horiz. Scale: 1:100.051 Vert. Scale: As Noted

6300 South Syracuse Way
 Suite 600
 Centennial, CO 80111
 (303) 721-1440

Sheet Revisions		
Date:	Comments	Init.

Colorado Department of Transportation

902 Erie Avenue
 Pueblo, CO 81001
 Phone: 719-562-5509 FAX: 719-546-5702

Region 2 DTD

As Constructed
No Revisions:
Revised:
Void:

US 50 WEST WESTBOUND ENVIRONMENTAL PLANS			
Designer:	KD	Structure Numbers	
Detailer:	KD	Subset Sheets:	3 of 8
Sheet Subset:	ENV		

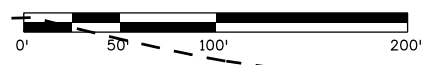
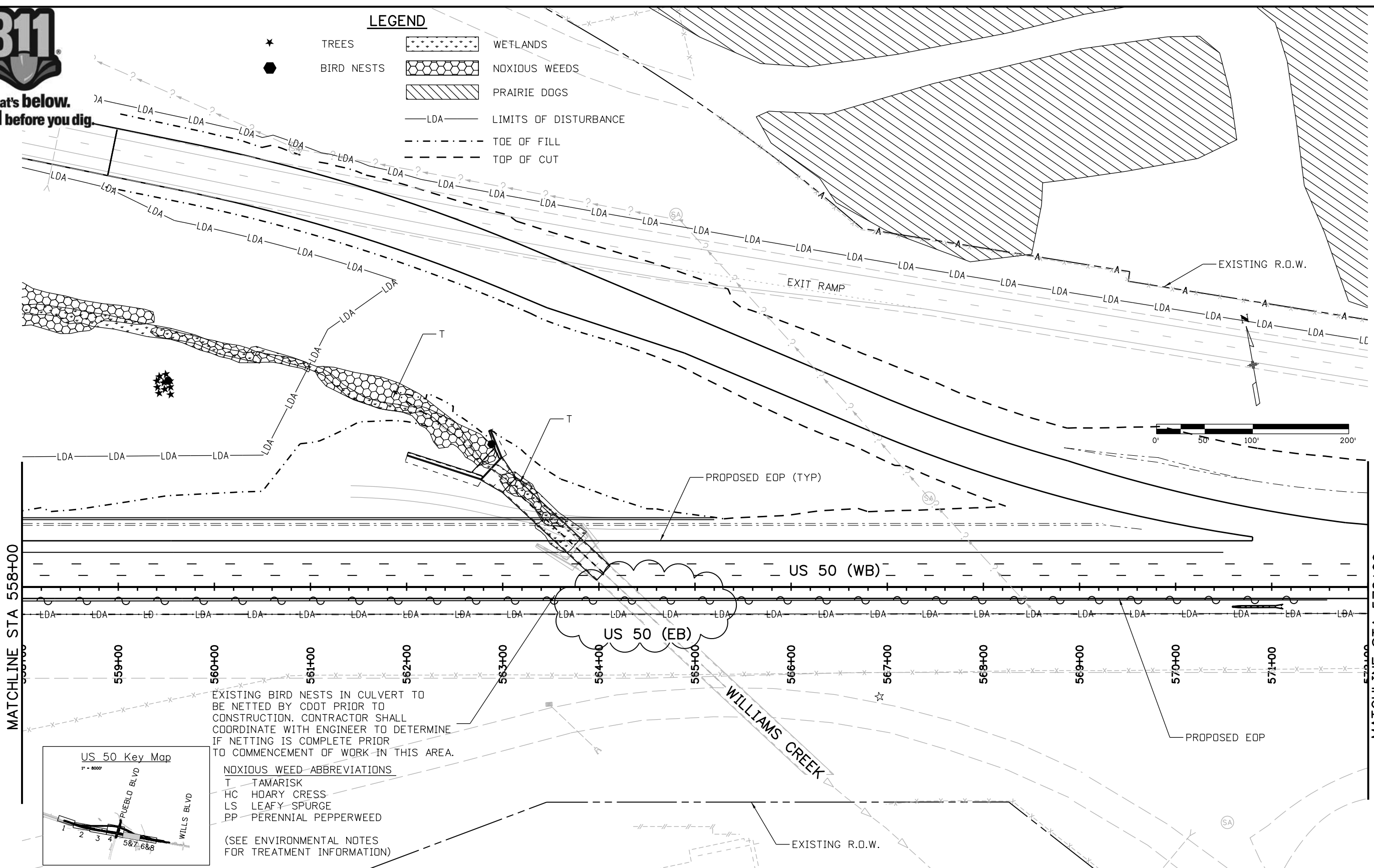
Project No./Code
FSA 0503-085
20344
Sheet Number 151



Know what's below.
Call before you dig.

LEGEND

- ★ TREES
- BIRD NESTS
- WETLANDS
- NOXIOUS WEEDS
- PRAIRIE DOGS
- LDA LIMITS OF DISTURBANCE
- TOE OF FILL
- TOP OF CUT

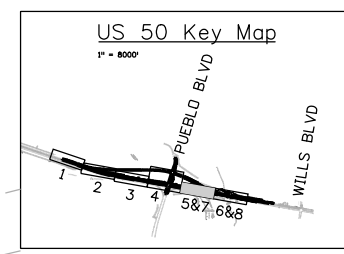


MATCHLINE STA 558+00

MATCHLINE STA 572+00

EXISTING BIRD NESTS IN CULVERT TO BE NETTED BY CDOT PRIOR TO CONSTRUCTION. CONTRACTOR SHALL COORDINATE WITH ENGINEER TO DETERMINE IF NETTING IS COMPLETE PRIOR TO COMMENCEMENT OF WORK IN THIS AREA.

- NOXIOUS WEED ABBREVIATIONS**
- T TAMARISK
 - HC HOARY CRESS
 - LS LEAFY SPURGE
 - PP PERENNIAL PEPPERWEED
- (SEE ENVIRONMENTAL NOTES FOR TREATMENT INFORMATION)

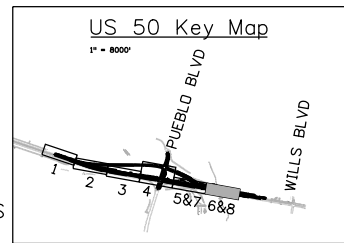


Print Date: 2/8/2017		Sheet Revisions			Colorado Department of Transportation		As Constructed		US 50 WEST WESTBOUND ENVIRONMENTAL PLANS		Project No./Code	
File Name: 20344-LAND_ENVI_05.dgn		Date:	Comments	Init.	902 Erie Avenue Pueblo, CO 81001 Phone: 719-562-5509 FAX: 719-546-5702		No Revisions:		Designer: KO		FSA 0503-085	
Horiz. Scale: 1:100.035 Vert. Scale: As Noted					Region 2 DTD		Revised:		Detailer: KO		20344	
6300 South Syracuse Way Suite 600 Centennial, CO 80111 (303) 721-1440							Void:		Sheet Subset: ENV		Sheet Number 153	
							Structure Numbers		Subset Sheets: 5 of 8			

kate.oberleics 4:16:57 PM c:\projectwise\pwz_working\1850380\20344-LAND_ENVI_05.dgn
 CDDOT-DefaultPrinter_V81.plt cfg CDDOT-PenTable.tbl
 2/8/2017

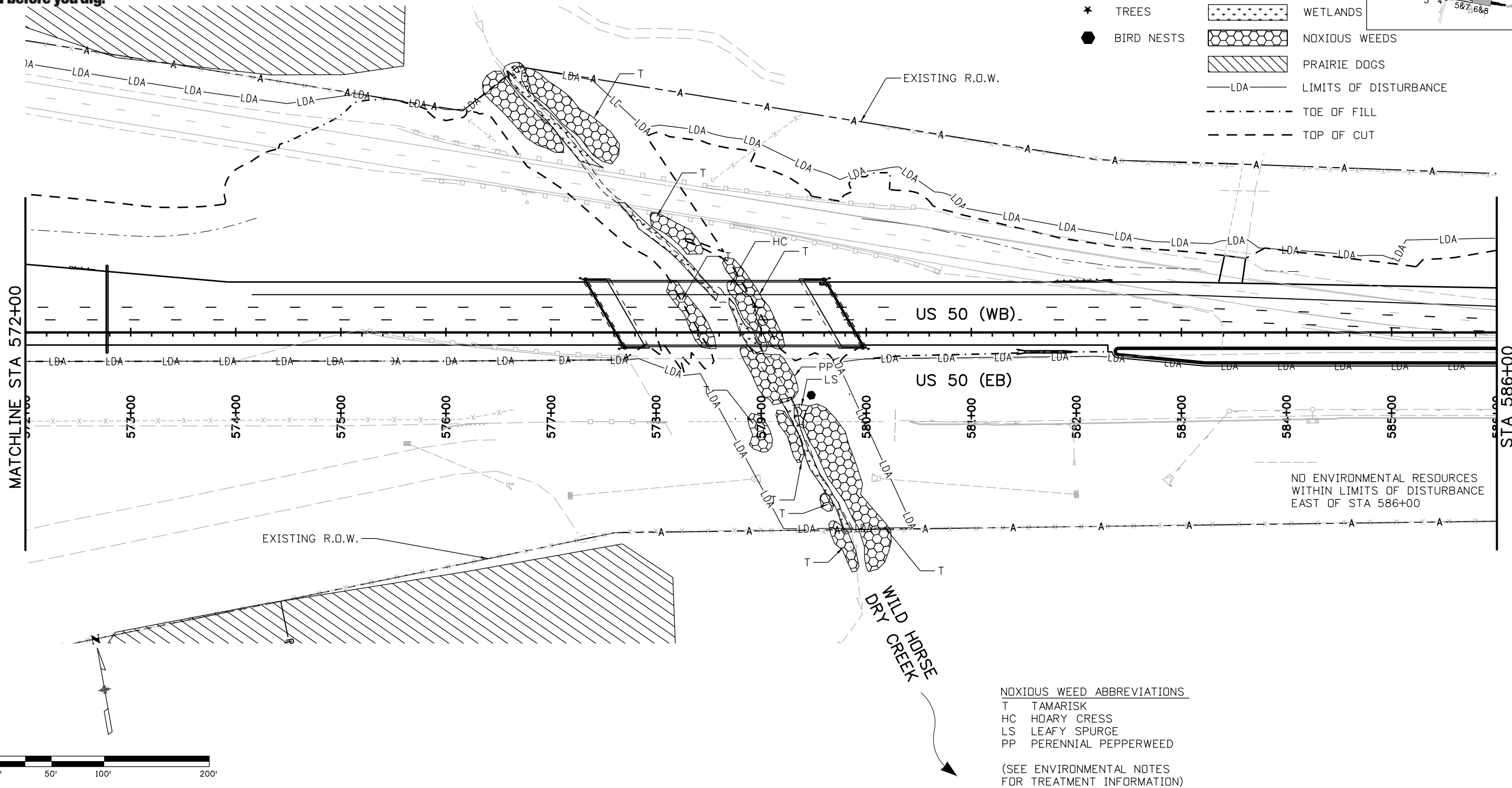


Know what's below.
Call before you dig.



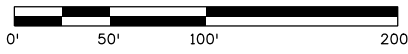
LEGEND

- ★ TREES
- BIRD NESTS
- WETLANDS
- NOXIOUS WEEDS
- PRAIRIE DOGS
- LDA LIMITS OF DISTURBANCE
- TOE OF FILL
- TOP OF CUT



NOXIOUS WEED ABBREVIATIONS
 T TAMARISK
 HC HOARY CRESS
 LS LEAFY SPURGE
 PP PERENNIAL PEPPERWEED

(SEE ENVIRONMENTAL NOTES FOR TREATMENT INFORMATION)



Print Date: 2/8/2017
 File Name: 20344-LAND_ENVI_06.dgn
 Horiz. Scale: 1:100.163 Vert. Scale: As Noted

FELSBURG HOLT & ULLEVIG
 6300 South Syracuse Way
 Suite 600
 Centennial, CO 80111
 (303) 721-1440

Sheet Revisions		
Date:	Comments	Init.

Colorado Department of Transportation

Region 2

902 Erie Avenue
 Pueblo, CO 81001
 Phone: 719-562-5509 FAX: 719-546-5702

DTD

As Constructed

No Revisions:
 Revised:
 Void:

US 50 WEST WESTBOUND ENVIRONMENTAL PLANS

Designer: KD
 Detailer: KD
 Sheet Subset: ENV

Structure Numbers
 Subset Sheets: 6 of 8

Project No./Code

FSA 0503-085

20344

Sheet Number **154**

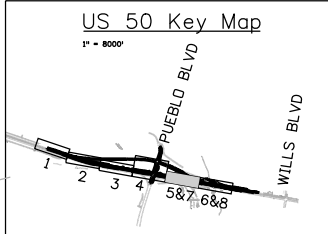
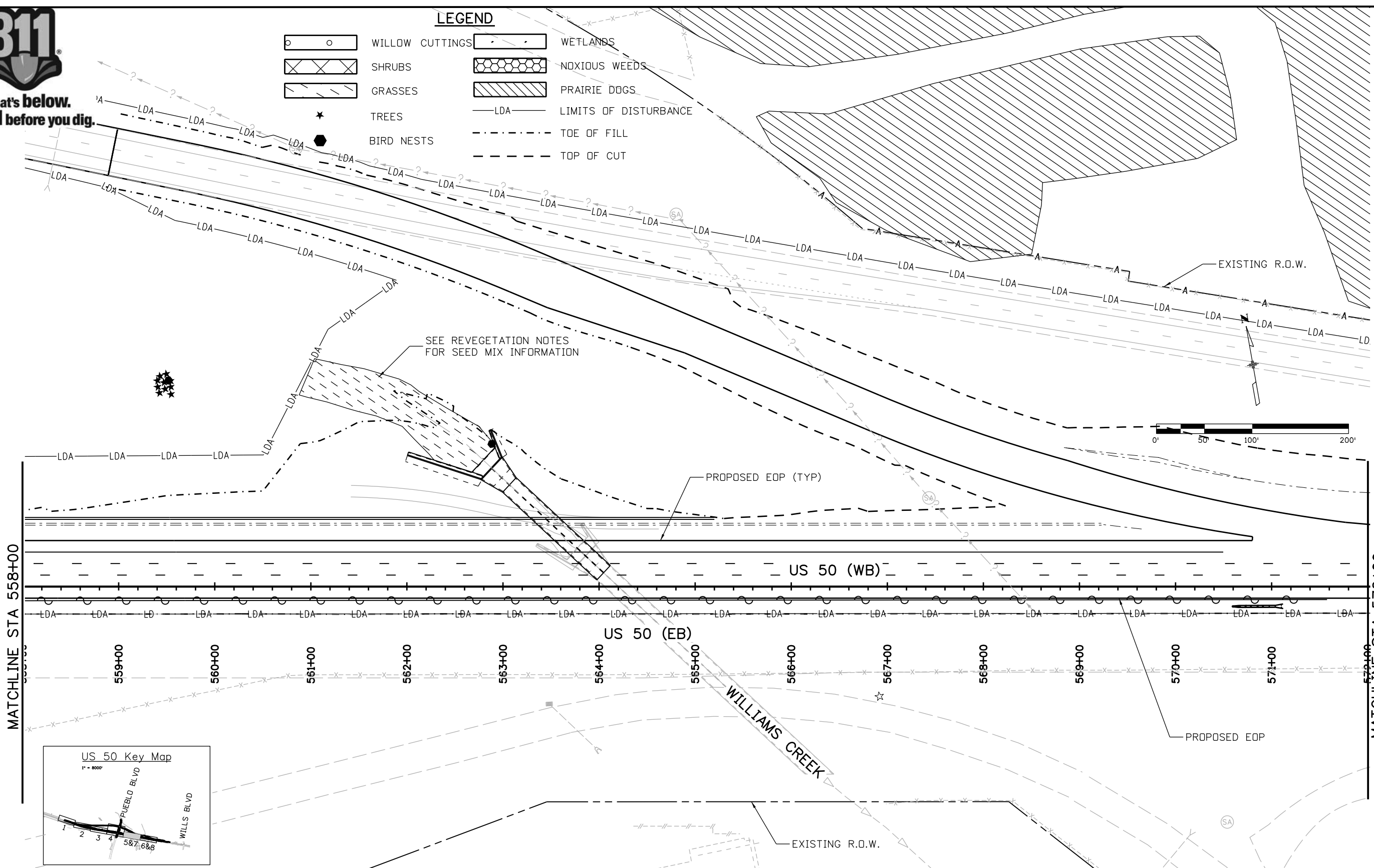
kate.oberleas 4:43:17 PM c:\projects\wise\pwz_working\1850380\20344-LAND_ENVI_06.dgn
 CDDT-DefaultPrinter_V8i.plt.ctb CDDT-PenTable.tbl
 2/8/2017



Know what's below.
Call before you dig.

LEGEND

- WILLOW CUTTINGS
- SHRUBS
- GRASSES
- TREES
- BIRD NESTS
- WETLANDS
- NOXIOUS WEEDS
- PRAIRIE DOGS
- LIMITS OF DISTURBANCE
- TOE OF FILL
- TOP OF CUT



kate.oberieos 4:19:29 PM c:\projectwise\pwworking\dl850380\20344-LAND_ENVI_SBA0_1.dgn
 CDDT-DefaultPrinter_V8i.plt;cf; CDDT-PenTable.tbl
 2/8/2017

Print Date: 2/8/2017
 File Name: 20344-LAND_ENVI_SBA0_1.dgn
 Horiz. Scale: 1:100.082 Vert. Scale: As Noted

6300 South Syracuse Way, Suite 600
 Centennial, CO 80111
 Phone: 303.721.1440
 Fax: 303.721.0832

Sheet Revisions		
Date:	Comments	Init.

Colorado Department of Transportation

902 Erie Avenue
 Pueblo, CO 81001
 Phone: 719-562-5509 FAX: 719-546-5702

Region 2 DTD

As Constructed
No Revisions:
Revised:
Void:

US 50 WEST WESTBOUND ENVIRONMENTAL PLANS REVEGETATION AREAS

Designer:	KD	Structure Numbers:	
Detailer:	KD	Subset Sheets:	7 of 8
Sheet Subset:	ENV		

Project No./Code

FSA 0503-085

20344

Sheet Number **155**

