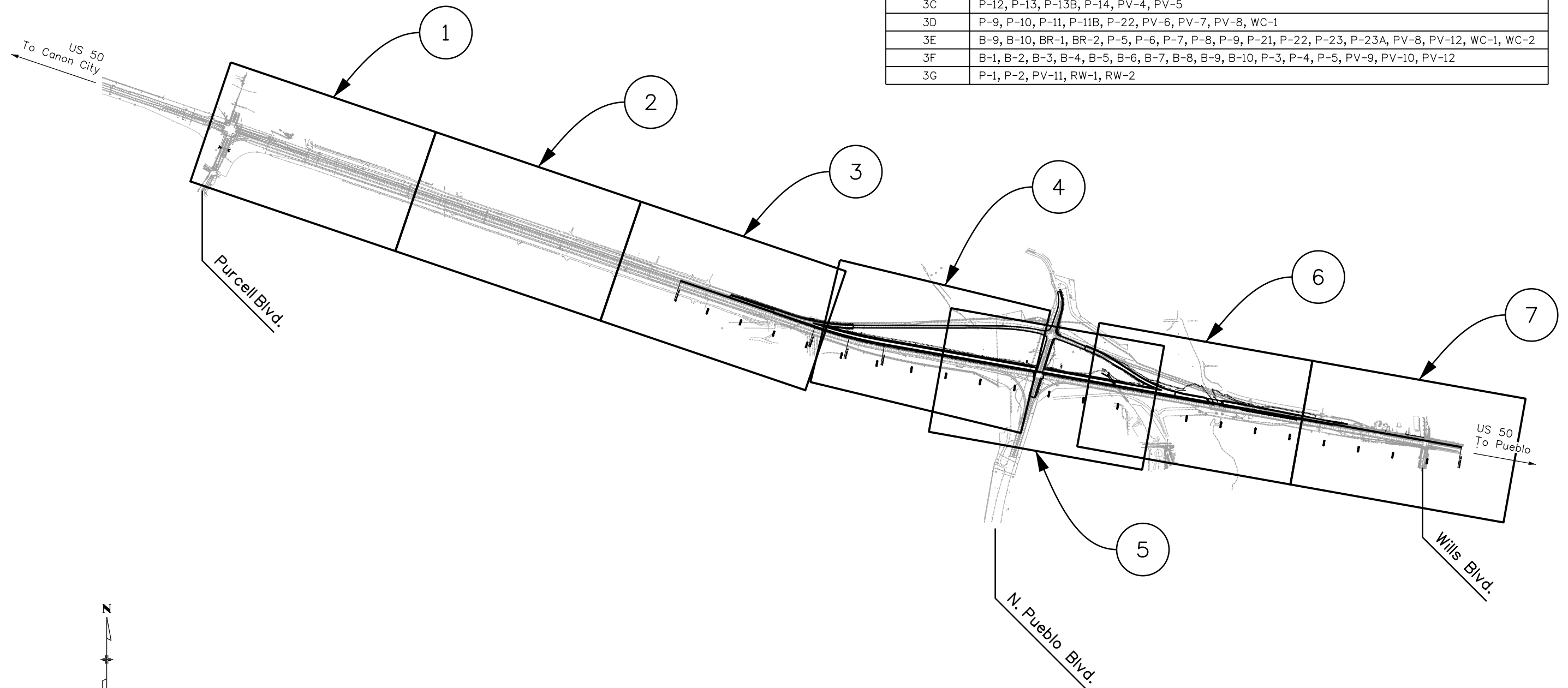


FIGURE NO.	BOREHOLES
3A	CBC-1, CBC-2, P-18, P-19, P-20, PV-1, PV-2
3B	P-15, P-16, P-17, PV-3
3C	P-12, P-13, P-13B, P-14, PV-4, PV-5
3D	P-9, P-10, P-11, P-11B, P-22, PV-6, PV-7, PV-8, WC-1
3E	B-9, B-10, BR-1, BR-2, P-5, P-6, P-7, P-8, P-9, P-21, P-22, P-23, P-23A, PV-8, PV-12, WC-1, WC-2
3F	B-1, B-2, B-3, B-4, B-5, B-6, B-7, B-8, B-9, B-10, P-3, P-4, P-5, PV-9, PV-10, PV-12
3G	P-1, P-2, PV-11, RW-1, RW-2



LEGEND:
 ① Indicates Borehole Location Plan Sheet

Print Date: 3/1/2017
 File Name: 20448GED_F3 Key Plan.dgn
 Horiz. Scale: 1:1500 Vert. Scale:

JFS **RockSol**
 Consulting Group, Inc.

Sheet Revisions		
Date:	Comments	Init.

Colorado Department of Transportation
 902 Erie Avenue
 Pueblo, CO 81001
 Phone: 719-562-5509 FAX: 719-546-5702
 Region 2 DTD

As Constructed
No Revisions:
Revised:
Void:

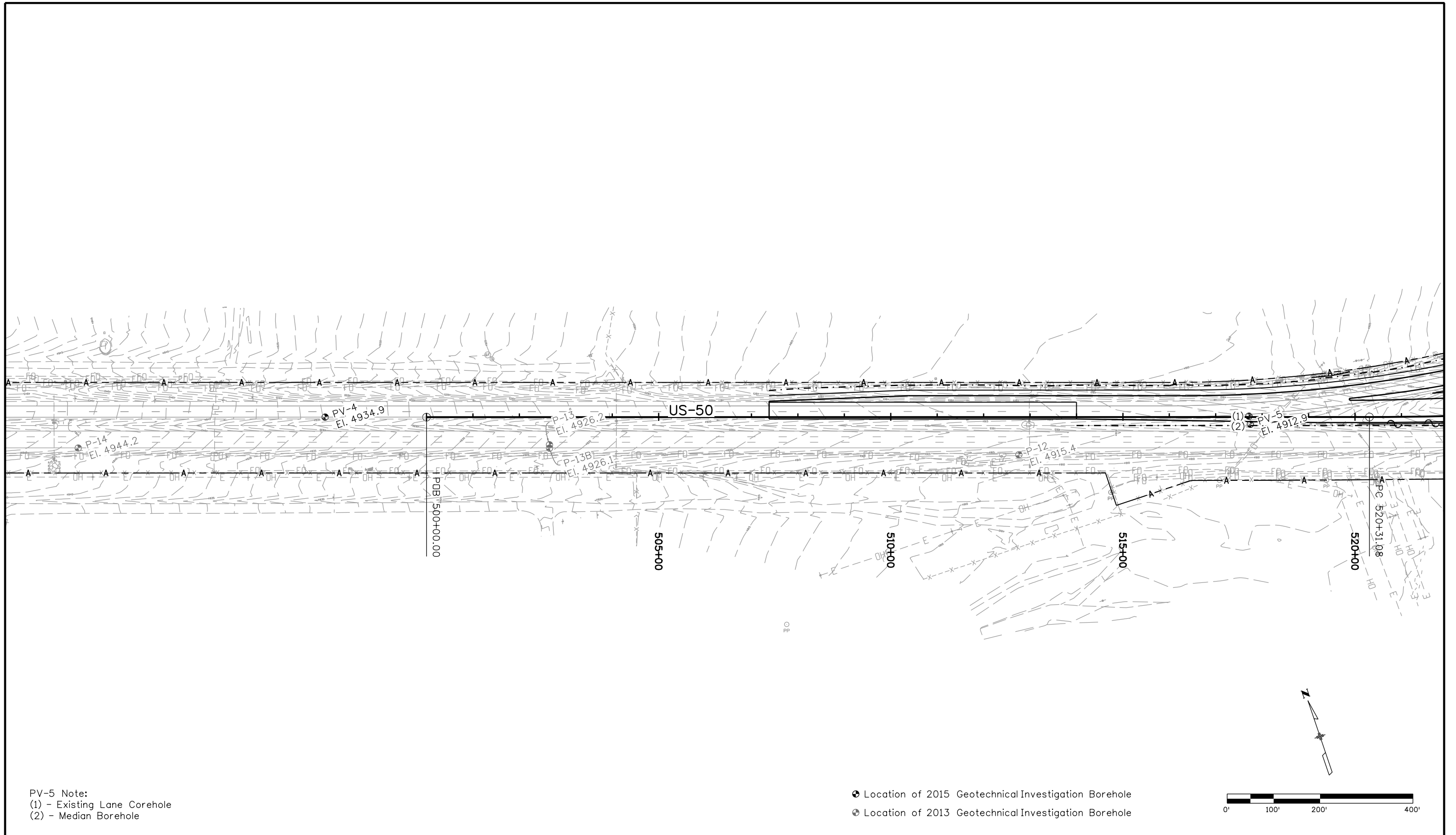
US 50 WEST
 PURCELL BLVD. TO WILLIS BLVD.
 BOREHOLE LOCATION - KEY PLAN

Designer:	R. Lepro	Structure Numbers	
Detailer:	D. Knight		
Subset:	Geotech	Subset Sheets: 1 of 11	

Project No./Code	STA 0503-085
	20344
Sheet Number	63

dknight 1:05:22 PM M:\PROJECTS\302.02 US-50 West\Sheet Files\20448GED_F3 Key Plan.dgn

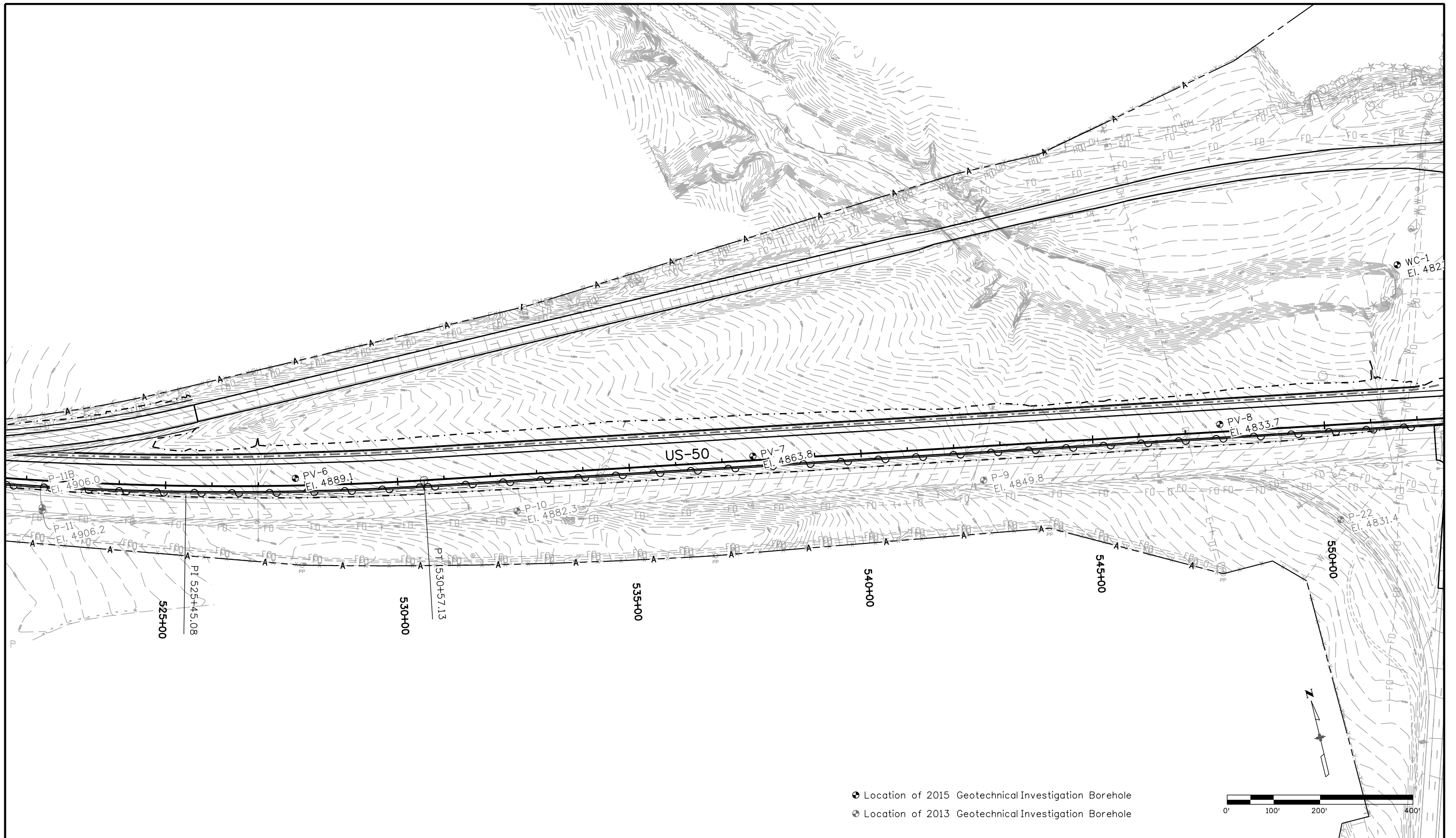
dknight 1:07:32 PM M:\PROJECTS\302.02 US-50 West\Sheet Files\20448GED_F3C BorePlan.dgn



PV-5 Note:
 (1) - Existing Lane Corehole
 (2) - Median Borehole

● Location of 2015 Geotechnical Investigation Borehole
 ● Location of 2013 Geotechnical Investigation Borehole

Print Date: 3/1/2017		Sheet Revisions			Colorado Department of Transportation			As Constructed		US 50 WEST			Project No./Code				
File Name: 20448GED_F3C BorePlan.dgn		Date:	Comments	Init.	 902 Erie Avenue Pueblo, CO 81001 Phone: 719-562-5509 FAX: 719-546-5702			No Revisions:		PURCELL BLVD. TO WILLIS BLVD.			STA 0503-085				
Horiz. Scale: 1:200 Vert. Scale:								Revised:					BOREHOLE LOCATION PLAN (3 OF 7)			20344	
 								Void:								Designer: R. Lepro Structure Detailer: D. Knight Numbers Subset: Geotech Subset Sheets: 4 of 11	



- Location of 2015 Geotechnical Investigation Borehole
- Location of 2013 Geotechnical Investigation Borehole

Print Date: 3/1/2017
 File Name: 20448GED_F3D BorePlan.dgn
 Horiz. Scale: 1:200 Vert. Scale:

JFS  **RockSol**
 Consulting Group, Inc.

Sheet Revisions		
Date:	Comments	Init.

Colorado Department of Transportation

 902 Erie Avenue
 Pueblo, CO 81001
 Phone: 719-562-5509 FAX: 719-546-5702

Region 2 DTD

As Constructed
No Revisions:
Revised:
Void:

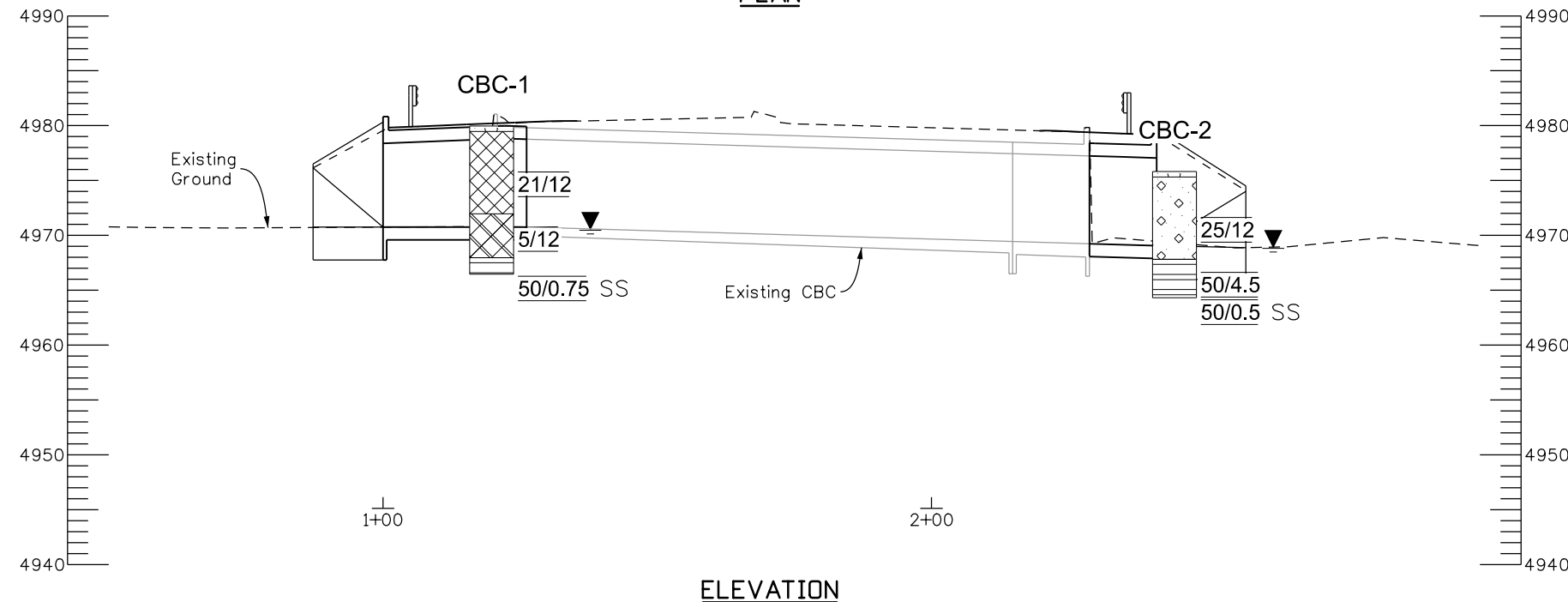
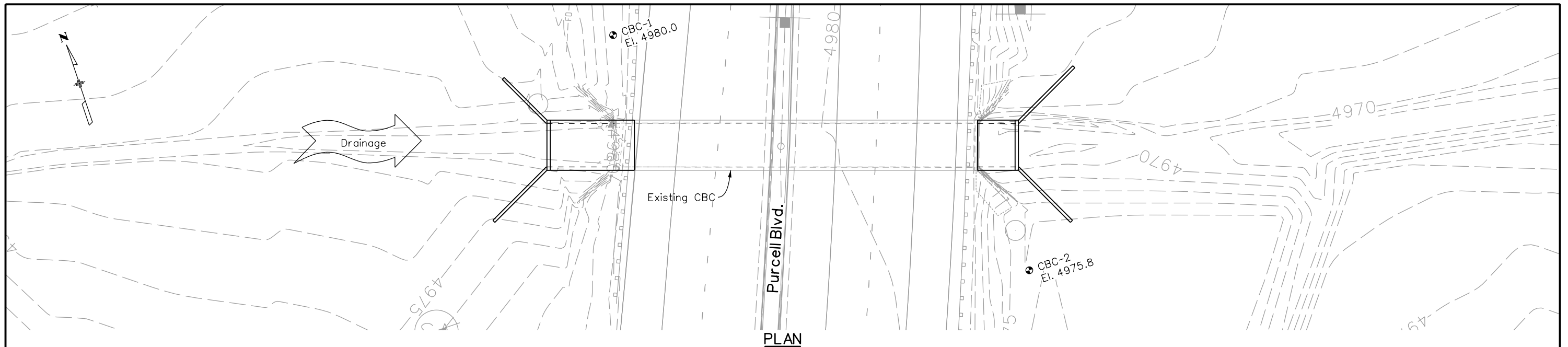
US 50 WEST
 PURCELL BLVD. TO WILLIS BLVD.
 BOREHOLE LOCATION PLAN (4 OF 7)

Designer: R. Lepro Structure Numbers
 Detailer: D. Knight
 Subset: Geotech Subset Sheets: 5 of 11

Project No./Code	STA 0503-085
	20344
Sheet Number	67

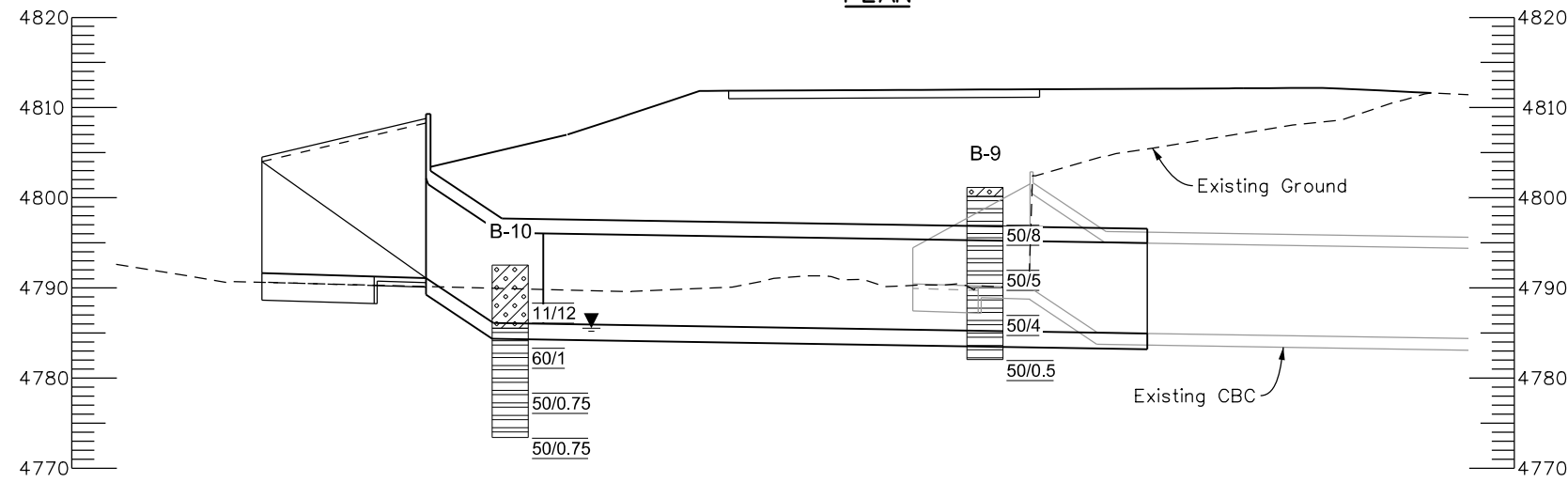
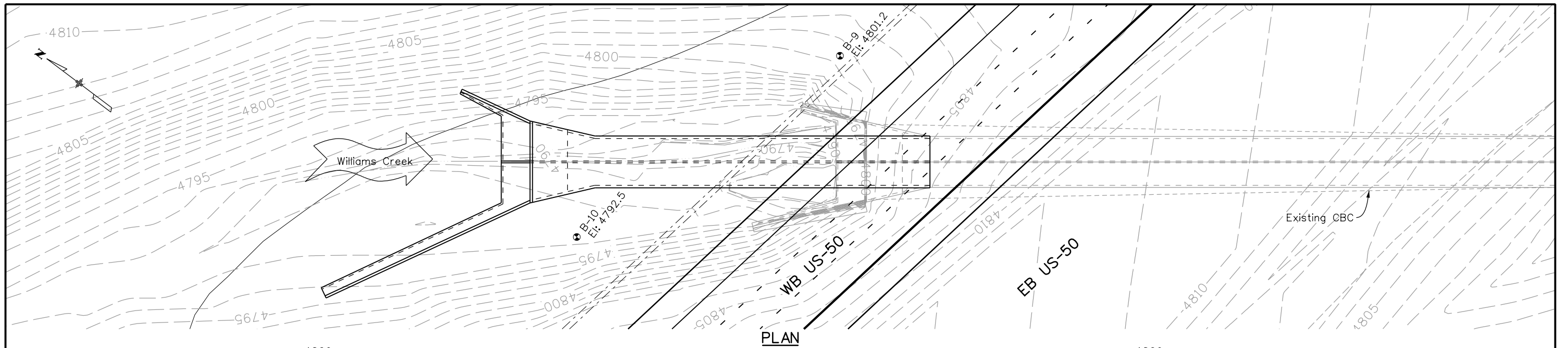
dknight 1:07:53 PM M:\PROJECTS\302.02 US-50 West\Sheet Files\20448GED_F3D BorePlan.dgn

dknight 1:09:25 PM M:\PROJECTS\302.02 US-50 West\Sheet Files\20448GED_F4 EngGeo-PB CBC.dgn



SUMMARY OF TEST RESULTS																	TYPE OF MATERIAL								LEGEND	
Sample ID	Depth (ft)	Liquid Limit	Plasticity Index	% < #200 Sieve	Classification		Water Content (%)	Dry Density (%)	Sulfate (%)	Sample ID	Depth (ft)	Liquid Limit	Plasticity Index	% < #200 Sieve	Classification		Water Content (%)	Dry Density (%)	Sulfate (%)	Material Description	BLOW COUNTS	TEST BORING				
					USCS	AASHTO									USCS	AASHTO										
CBC-1	0-5	27	12	64	CL	A-6 (5)			0.03																	
CBC-1	4						14.8	117.8																		
CBC-1	9			17			7.9	131.1																		
CBC-2	0-5	27	13	49	SC	A-6 (3)			0.77																	
CBC-2	4						8.9	127.8																		
CBC-2	9						7.9	134.4	0.10																	

Print Date: 3/1/2017	Sheet Revisions		Colorado Department of Transportation 902 Erie Avenue Pueblo, CO 81001 Phone: 719-562-5509 FAX: 719-546-5702 Region 2	As Constructed		US 50 WEST PURCELL BLVD. TO WILLIS BLVD. PURCELL CBC ENG. GEOLOGY		Project No./Code	
File Name: 20448GED_F4 EngGeo-PB CBC.dgn	Date:	Comments:		Init.:	No Revisions:	Revised:	Void:	Designer: R. Lepro	Structure Numbers:
Horiz. Scale: 1:30	Vert. Scale: 1:10							20344	
JFS & A		RockSol Consulting Group, Inc.		DTD		Subset: Geotech		Subset Sheets: 9 of 11	
								Figure 71	



ELEVATION

SUMMARY OF TEST RESULTS

SUMMARY OF TEST RESULTS										SUMMARY OF TEST RESULTS									
Sample ID	Depth (ft)	Liquid Limit	Plasticity Index	% < #200 Sieve	Classification		Water Content (%)	Dry Density (%)	Sulfate (%)	Sample ID	Depth (ft)	Liquid Limit	Plasticity Index	% < #200 Sieve	Classification		Water Content (%)	Dry Density (%)	Sulfate (%)
					USCS	AASHTO									USCS	AASHTO			
B-9	4	25	9	37	SC	A-4 (0)	8.0		0.92										
B-9	9						8.3												
B-9	14						7.9												
B-9	19						4.3												
B-10	0-4	29	15	46	SC	A-6 (3)			0.40										
B-10	4	26	11	58	CL	A-6 (3)	20.3	113.3											

TYPE OF MATERIAL

- Asphalt Pavement
- Fill - CLAY
- Fill - SAND
- TOPSOIL
- Native - SAND, gravelly
- Native - CLAY
- Native - GRAVEL, silty
- Bedrock - SANDSTONE
- Bedrock - SHALE
- Fill - Aggregate Base Course
- Fill - SAND
- Fill - CLAY
- Native - SAND, silty
- Native - SAND, clayey
- Native - CLAY, gravelly
- Native - CLAY, sandy
- Bedrock - CLAYSTONE

LEGEND

TEST BORING

B Bridge Borehole
 ▽ Ground Water Level At Time of Drilling
 — 9 Blows for 12 Inches
 | 50 Blows for 3 Inches
 SS Split Spoon Sampler Required 8 Blows for 6 Inches Required 6 Blows for 6 Inches Required 7 Blows for 6 Inches

BORING ID NOTED AT THE TOP OF LOG
 BLOW COUNTS OBTAINED WITH SPLIT SPOON SAMPLERS ARE NOTED WITH "SS". ALL OTHER BLOW COUNTS OBTAINED WITH A MODIFIED CALIFORNIA BARREL SAMPLER
 SEE INDIVIDUAL LOG SHEETS FOR MORE DETAIL

Print Date: 3/1/2017
 File Name: 20448GEO_F5 EngGeo-WC CBC.dgn
 Horiz. Scale: 1:40 Vert. Scale: 1:20

Sheet Revisions		
Date:	Comments	Init.

Colorado Department of Transportation
 902 Erie Avenue
 Pueblo, CO 81001
 Phone: 719-562-5509 FAX: 719-546-5702
 Region 2 DTD

As Constructed
 No Revisions:
 Revised:
 Void:

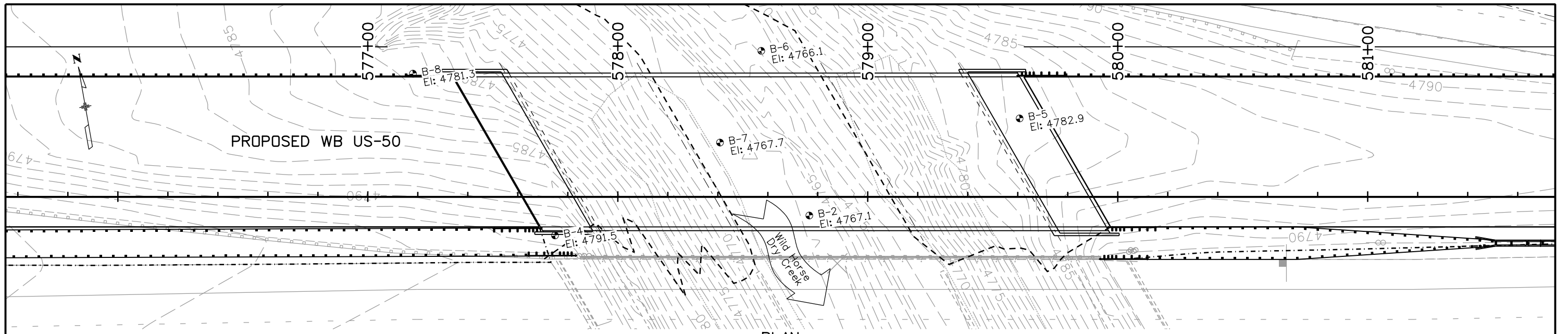
US 50 WEST
 PURCELL BLVD. TO WILLIS BLVD.
 WILLIAMS CREEK CBC ENG. GEOLOGY

Designer: R. Lepro
 Detailer: D. Knight
 Subset: Geotech

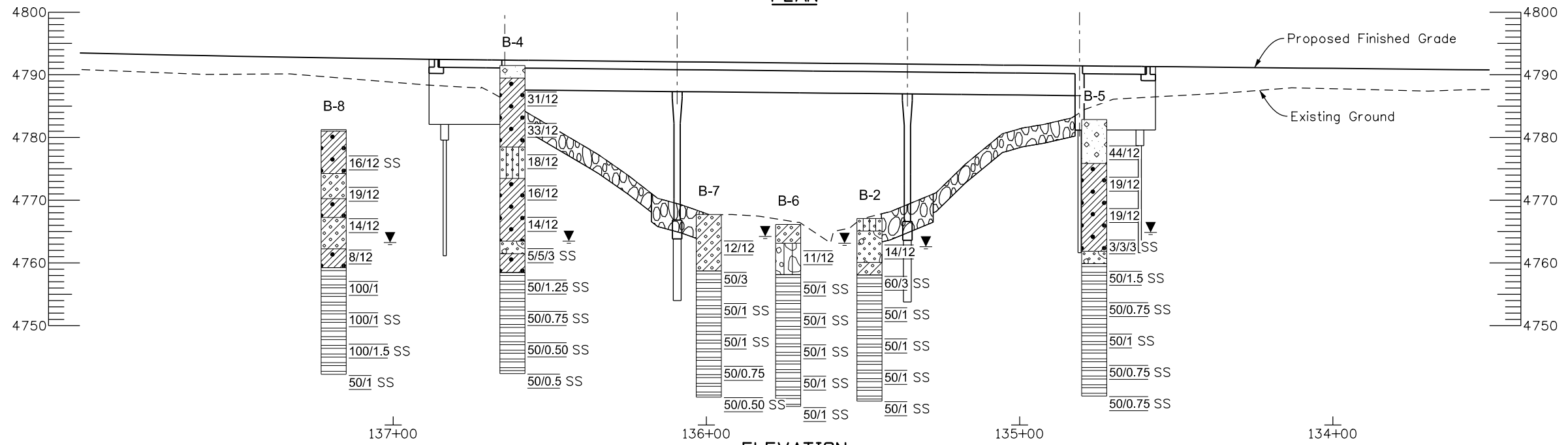
Structure Numbers
 Subset Sheets: 10 of 11

Project No./Code
 STA 0503-085
 20344
 Figure 72

dknight 1:10:05 PM M:\PROJECTS\302.02 US-50 West\Sheet Files\20448GEO_F5 EngGeo-WC CBC.dgn



PLAN



ELEVATION

SUMMARY OF TEST RESULTS																		TYPE OF MATERIAL						LEGEND	
Sample ID	Depth (ft)	Liquid Limit	Plasticity Index	% < #200 Sieve	Classification	Water Content (%)	Dry Density (%)	Sulfate (%)	Sample ID	Depth (ft)	Liquid Limit	Plasticity Index	% < #200 Sieve	Classification	Water Content (%)	Dry Density (%)	Sulfate (%)	As Constructed	TEST BORING						
B-2	0-4	26	9	51	CL A-4 (2)	11.2	125.9		B-4	39					15.8			As Constructed	B Bridge Borehole Ground Water Level At Time of Drilling 9 Blows for 12 Inches 50 Blows for 3 Inches Split Spoon Sampler Required 8 Blows for 6 Inches Required 6 Blows for 6 Inches Required 7 Blows for 6 Inches <small>BORING ID NOTED AT THE TOP OF LOG BLOW COUNTS OBTAINED WITH SPLIT SPOON SAMPLERS ARE NOTED WITH "SS". ALL OTHER BLOW COUNTS OBTAINED WITH A MODIFIED CALIFORNIA BARREL SAMPLER SEE INDIVIDUAL LOG SHEETS FOR MORE DETAIL.</small>						
B-2	4								B-4	44					10.9			No Revisions:							
B-2	9					12.1			B-4	49					5.0			Revised:							
B-2	9.5	24	8	22	SC A-2-4 (0)				B-5	4					9.3	131.0	2.07	Void:							
B-2	14					12.6			B-5	9	30	17	72	CL A-6 (10)	13.4	120.1									
B-2	19					9.4			B-5	14	32	17	80	CL A-6 (12)	17.7	112.5									
B-2	24					10.6			B-5	19					21.8										
B-4	0-15								B-5	24					8.7										
B-4	4					10.7	124.0		B-5	29					6.4										
B-4	9	30	16	54	CL A-6 (5)	11.2	128.5		B-5	34					10.2										
B-4	14					47	125.9		B-5	44					1.9										
B-4	19	35	20	94	CL A-6 (18)	18.2	110.8	1.74	B-6	0-4	29	15	60	CL A-6 (6)	12.5	125.9									
B-4	24					20.6	107.4		B-6	4					7.2										
B-4	29					13.9			B-6	5-8	NP	NP	5	SW A-1-a (0)											
B-4	34					10.3			B-6	14															

Print Date: 3/1/2017	Sheet Revisions		Colorado Department of Transportation		As Constructed		US 50 WEST		Project No./Code		
File Name: 20448GEO_F6 EngGeo-WHDC Bridge.dgn	Date:	Comments	Init.	902 Erie Avenue Pueblo, CO 81001 Phone: 719-562-5509 FAX: 719-546-5702		No Revisions:		PURCELL BLVD. TO WILLIS BLVD. WILD HORSE DRY CREEK BRDG. ENG. GEO.		STA 0503-085	
Horiz. Scale: 1:40 Vert. Scale: 1:20				Region 2 DTD		Revised:		Designer: R. Lepro Structure Numbers		20344	
						Void:		Detailer: D. Knight Subset Sheets: 11 of 11		Figure 73	

dknight 1:10:39 PM M:\PROJECTS\302.02 US-50 West\Sheet Files\20448GEO_F6 EngGeo-WHDC Bridge.dgn