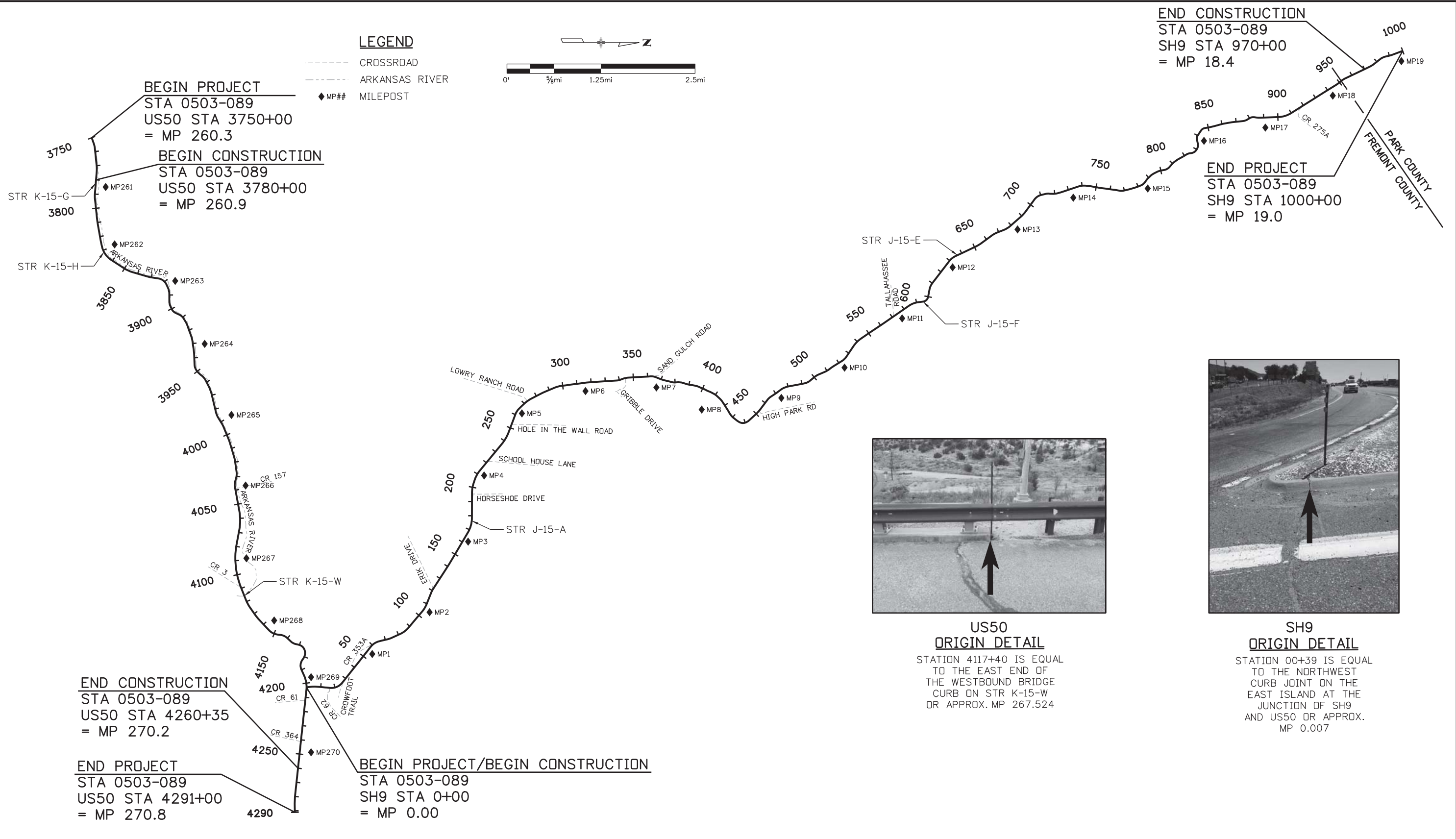
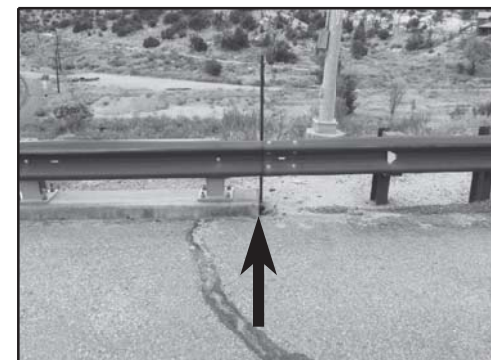


busansky\10:50:24 AM pw:\617479-PWINT.aecomonline\local:AECOM\_DS01\_NA\Documents\60505397-US50\_Royal Gorge West\_SH9.ctb North\900 Work\910 CAD\02 SHEETS\02\_SHEETS\21255DES\_Project Control.dgn

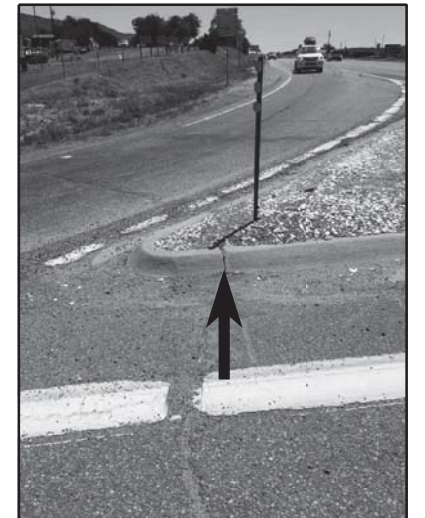


**END CONSTRUCTION**  
 STA 0503-089  
 SH9 STA 970+00  
 = MP 18.4

**END PROJECT**  
 STA 0503-089  
 SH9 STA 1000+00  
 = MP 19.0



**US50  
 ORIGIN DETAIL**  
 STATION 417+40 IS EQUAL  
 TO THE EAST END OF  
 THE WESTBOUND BRIDGE  
 CURB ON STR K-15-W  
 OR APPROX. MP 267.524



**SH9  
 ORIGIN DETAIL**  
 STATION 00+39 IS EQUAL  
 TO THE NORTHWEST  
 CURB JOINT ON THE  
 EAST ISLAND AT THE  
 JUNCTION OF SH9  
 AND US50 OR APPROX.  
 MP 0.007

Print Date: 12/21/2016
File Name: 21255DES_Project Control.dgn
Horiz. Scale: 1:6600      Vert. Scale: N/A
<b>AECOM</b>

Sheet Revisions		
Date:	Comments	Init.

Colorado Department of Transportation  
  
 1480 Quail Lake, Suite A  
 Colorado Springs, CO 80906  
 Phone: 719-634-2323    FAX: 719-227-3298  
**Region 2**      DW

<b>As Constructed</b>
No Revisions:
Revised:
Void:

<b>SH 9 / US 50 OVERVIEW AND CONTROL</b>			
Designer:	JAB	Structure	
Detailer:	JAB	Numbers	
Subset:	CONTROL	Subset Sheets:	1 of 1

<b>Project No./Code</b>
STA 0503-089
21255
Sheet Number      8