

Oversight / NHS

FHWA PROJECTS OF DIVISION INTEREST (PoDI) OVERSIGHT?  NO  YES

NATIONAL HIGHWAY SYSTEM?  NO  YES

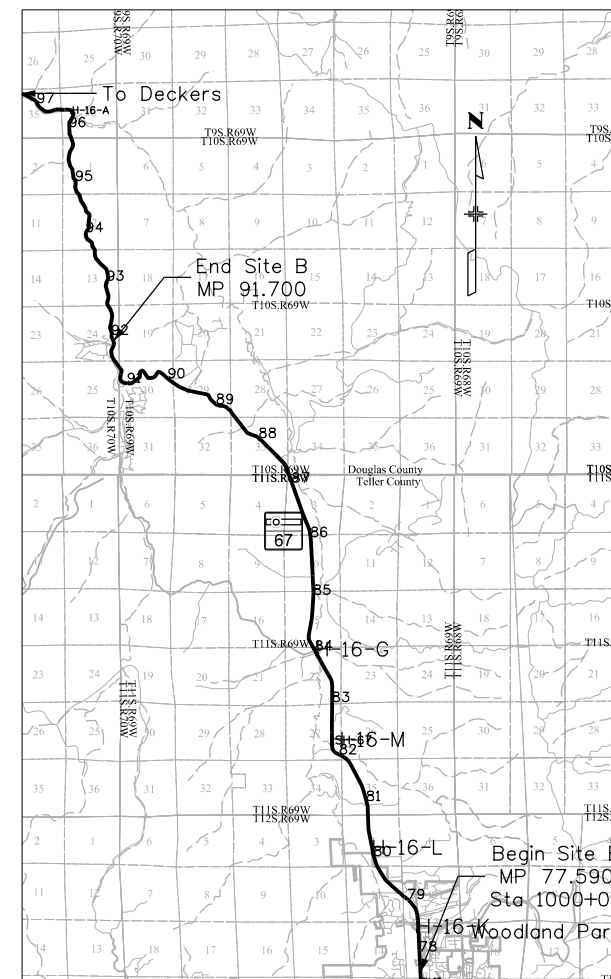
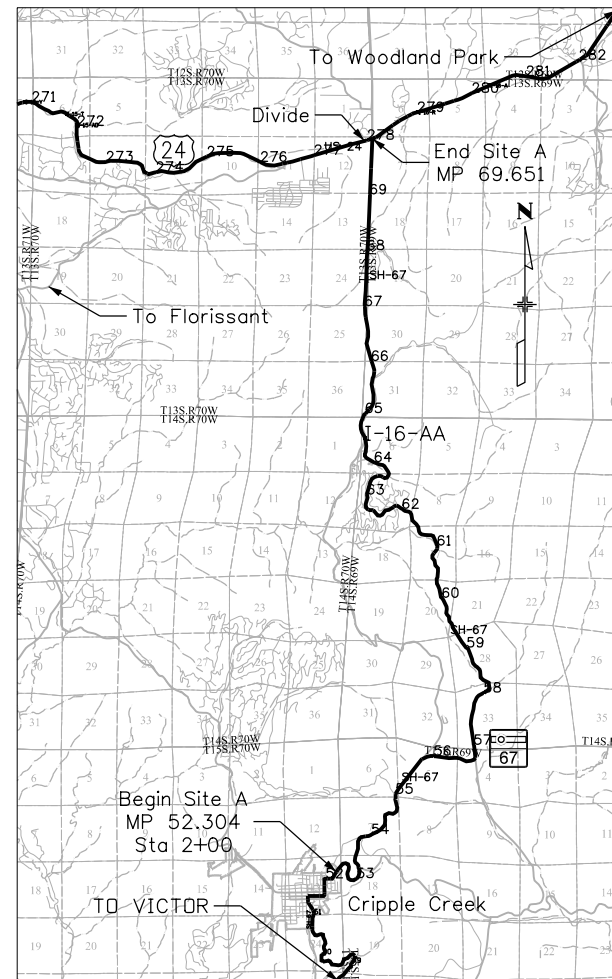
# DEPARTMENT OF TRANSPORTATION STATE OF COLORADO

## HIGHWAY CONSTRUCTION BID PLANS OF PROPOSED FEDERAL AID PROJECT NO. STA 067A-039 STATE HIGHWAY NO. 67 DOUGLAS & TELLER COUNTIES CONSTRUCTION PROJECT CODE NO. 21254

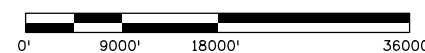
**Related Projects:**  
P. E. UNDER PROJECT: STM R200-231  
Project Number: 21393  
Project Code:

### TABULATION OF LENGTH & DESIGN DATA

STATION	FEET	
	ROADWAY	MAJOR STR.
APPROACH TO PROJECT STA. 2+00.00		
STR 067A-039 BEGIN Site A STA 2+00.00 = MP 52.304 STA. 713+85 STRUCTURE I-16-AA END SITE A STA 939+89 = MP 69.651	93789	24'-0"
BEGIN SITE B STA 1000+00.00 = MP 77.590 STA. 1029+62 STRUCTURE H-16-L STA. 1136+86 STRUCTURE H-16-M STA. 1225+09 STRUCTURE H-16-I END SITE STA 1750+66 = MP 91.700	75066	37'-9" 46'-0" 90'-6"
<b>TOTAL</b>	<b>168855</b>	<b>0</b>
<b>SUMMARY OF PROJECT LENGTH</b>	<b>FEET</b>	<b>MILES</b>
<b>MAJOR STRUCTURE</b>	<b>0</b>	<b>0.000</b>
<b>PROJECT GROSS LENGTH</b>	<b>168855</b>	<b>31.980</b>
<b>DESIGN DATA</b>	S.H. 67	
<b>SITE A (South)</b>		
2035 DESIGN TRAFFIC	ADT = 5,700	
DHV TRUCK %	5.60%	
CONSTRUCTION CLEAR ZONE SPEED REDUCTION OF 15 MPH	18 FT.	
CONSTRUCTION CLEAR ZONE NO SPEED REDUCTION	30 FT.	
<b>SITE B (North)</b>		
2035 DESIGN TRAFFIC	ADT = 14,700	
DHV TRUCK %	9.30%	
CONSTRUCTION CLEAR ZONE SPEED REDUCTION OF 15 MPH	26 FT.	
CONSTRUCTION CLEAR ZONE NO SPEED REDUCTION	40 FT.	



**PROJECT LOCATION MAP**



SHEET NO.	INDEX OF SHEETS
(R-1) 1a	TITLE SHEET
2	STANDARD PLANS LIST SHEET
(R-1) 3a	TYPICAL SECTIONS
(R-1) 5a	GENERAL NOTES
(R-1) 6a	SUMMARY OF APPROXIMATE QUANTITIES
(R-1) 9a	TABULATION OF RESURFACING
(R-1) 18a	TABULATION OF APPROACHES
22	TABULATION OF DETECTABLE WARNINGS
(R-1) 23a	TABULATION OF GUARDRAIL, DELINEATOR, AND RUMBLE STRIP
(R-1) 25a	GUARDRAIL DETAIL SHEETS
30	TABULATION OF CONSTRUCTION TRAFFIC CONTROL DEVICES
31	STORMWATER MANAGEMENT PLAN
34	PLAN SHEETS
96	TABULATION OF PERMANENT SIGNING
104	THERMOPLASTIC PAVEMENT MARKING TABULATION
105	STRUCTURE PLAN SHEETS
(R-1) 111Aa	TABULATION OF PLANING

**Project Description:**

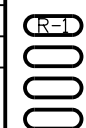
The Site A project limits are from Cripple Creek to Divide. The Site B project limits are from Woodland Park to Westcreek. Site A activities include 4 inches of CIPR, and a full length and width 1.5" overlay. Site B activities include a full length and width 1.5" overlay. Project activities also include shouldering, guardrail adjustment and hardware replacement, bridge rail replacement, additional approach and departure guardrail for bridges, temporary erosion control, centerline rumble strips, and delineator replacement and installation.

Print Date: 3/15/2017

File Name: 21254DES\_TitleSht.dgn

Horiz. Scale: 1:1      Vert. Scale: As Noted

Unit Information      Unit Leader Initials



**Sheet Revisions**

Date:	Comments	Init.
3/15/2017	Rev. Index and Desc.	AWG

Colorado Department of Transportation



Region 2

1480 Quail Lake Loop, Suite A  
Colorado Springs, CO 80906  
Phone: 719-227-3231    FAX: 719-227-3298

DLH

**As Constructed**

No Revisions:

Revised:

Void:

**Contract Information**

Contractor:

Resident Engineer:

Project Engineer:

PROJECT STARTED:    /    /    ACCEPTED:    /    /

Comments:

**Project No./Code**

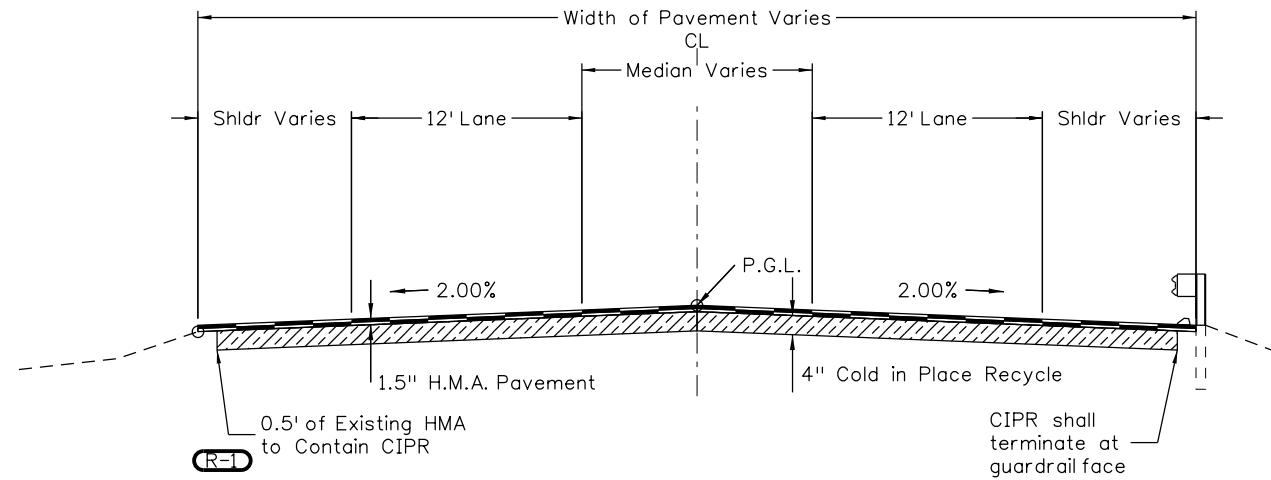
STA 067A-039

21254

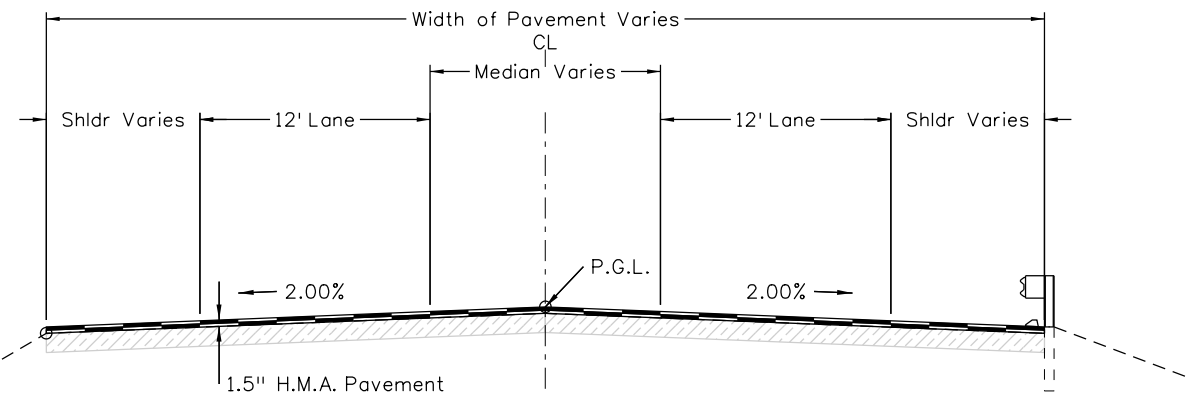
Sheet Number    1a

gibberta 5:47:41 AM C:\Projects\21254 - SH 67 Cripple Creek to Westcreek\Design\Drawings\21254DES\_TypSect01.dgn

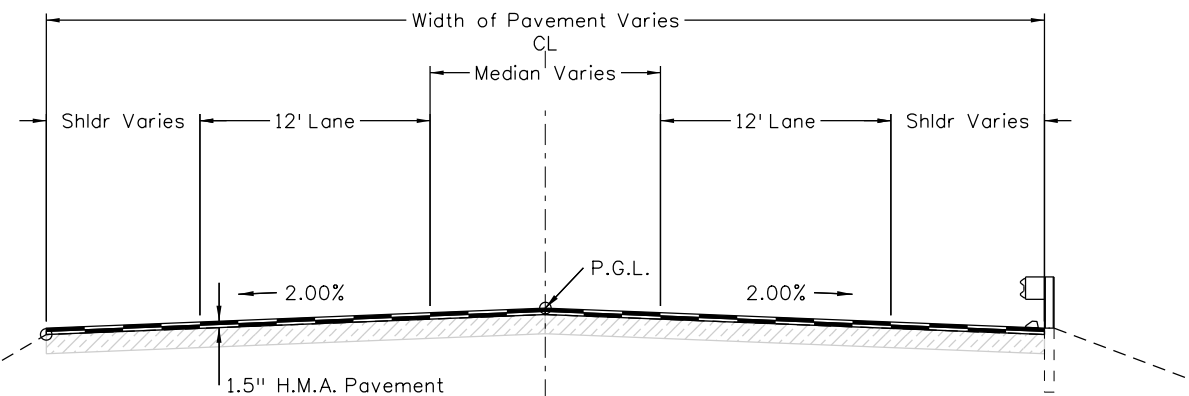
4" Cold In-place Recycle and 1.5" HMA ST 75 PG 58-28 Overlay  
STA 2+00 (Begin Site A) to 926+69 (Hybrook Road S)



2" HMA ST 75 PG 58-28 Overlay  
STA 926+69 (Hybrook Road S) to STA 939+89 (End Site A)




1.5" HMA ST 75 PG 58-28 Overlay  
STA 1000+00 (Begin Site B) to 1750+66 (End Site B)



STA 067A-039 (21254)				
Design Parameters				
	SH 67F	SH 67D		
Design Life (Years)	20	10		
18-Kip ESALS	857,000	246,000		
Heavy Trucks (Cumulative)	1,707,710	351,723		
Operational Speed (MPH)	55	55		
Effective Binder Content (%)	10.7	10.7		
Voids (%)	5.5	5.5		
Reconstruction Pavement Thickness (in)	----	----		
CIP Thickness (in)	4	0		
Overlay Thickness (in)	2	1.5		
HMA Grading	ST	ST		
HMA Design Gyration	75	75		
HMA Grading (top lift)	PG 58-28	PG 58-28		
HMA Grading (bottom lifts)	----	----		
Distress Prediction Summary				
	Target	Predicted	Target	Predicted
Terminal IRI (in/mile)	200	124.01	200	93.27
Reliability (%)	90	100	90	100
Permanent Deformation (in)	0.8	0.21	0.8	0.18
Reliability (%)	90	100	90	100
AC Total Fatigue Cracking (%)	35	1.59	35	1.63
Reliability (%)	90	100	90	100
AC Total Transverse Cracking (ft/mile)	2500	188.35	2500	205.53
Reliability (%)	90	100	90	100
Permanent Deformation - AC Only (in)	0.65	0.15	0.65	0.12
Reliability (%)	90	100	90	100
AC Bottom-Up Fatigue Cracking (%)	25	0	25	0
Reliability (%)	90	100	90	100
AC Thermal Cracking (ft/mile)	1500	0.53	1500	1
Reliability (%)	90	99.96	90	100
AC Top-Down Fatigue Cracking (ft/mile)	3000	280.06	3000	660.19
Reliability (%)	90	100	90	100

Print Date: 3/15/2017  
File Name: 21254DES\_TypSect01.dgn  
Horiz. Scale: 1:10      Vert. Scale: As Noted  
Unit Information      Unit Leader Initials

Sheet Revisions		
Date:	Comments	Init.
3/15/2017	Revised Typical	AWG

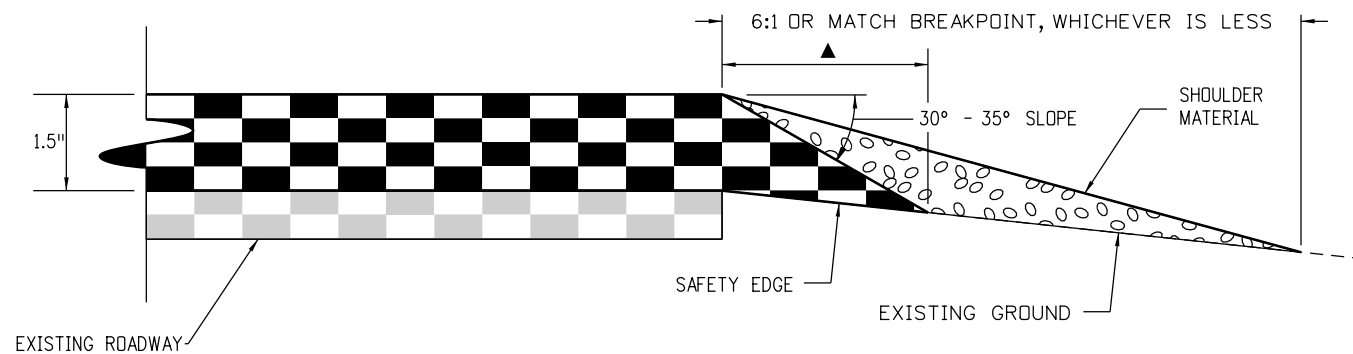
Colorado Department of Transportation  
 1480 Quail Lake Loop, Suite A  
 Colorado Springs, CO 80906  
 Phone: 719-227-3231      FAX: 719-227-3298  
**Region 2**      **DLH**

**As Constructed**  
 No Revisions:  
 Revised:  
 Void:

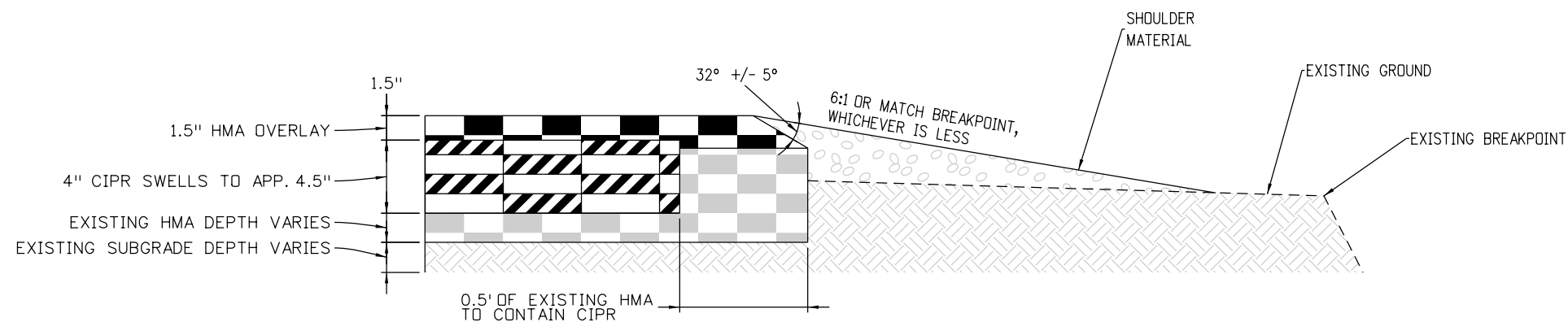
**TYPICAL SECTION SHEET**  
 Designer:      AWG      Structure Numbers  
 Detailer:  
 Sheet Subset:      TypSec      Subset Sheets:      1 of 2

**Project No./Code**  
 STA 067A-039  
 21254  
 Sheet Number      3a

gibberta 5:47:44 AM C:\Projects\21254 - SH 67 Cripple Creek to Westcreek\Design\Drawings\21254DES\_TypSect02.dgn



**SAFETY EDGE DETAIL FOR 1.5" HMA OVERLAY (NOT TO SCALE)**



**SAFETY EDGE DETAIL FOR OVERLAY AND COLD-IN PLACE RECYCLE (NOT TO SCALE)**

**GENERAL NOTES**

1. THE SAFETY EDGE WILL BE CONSTRUCTED AS PART OF THE ROADWAY PAVEMENT. A SHOULDER WEDGE DEVICE WILL BE ADDED TO THE SCREED OF THE PAVING MACHINE.
2. THE CONTRACTOR MAY USE A SHOULDER WEDGE MAKER OR A SIMILAR DEVICE THAT PRODUCES THE SAME COMPACTION RESULTS.
3. SHORT SECTIONS OF HANDWORK WILL BE ALLOWED WHEN NECESSARY FOR TRANSITIONS AND TURNOUTS.
4. SITE PREPARATION AND ADDITIONAL EARTHWORK REQUIRED TO CONSTRUCT THE SAFETY EDGE WILL NOT PAID FOR SEPARATELY BUT SHALL BE INCLUDED IN THE WORK.
- (R-1)** 5. CONTRACTOR SHALL BE RESPONSIBLE FOR CLEANING ANY LAITANCE REMAINING FROM THE CIPR PROCESS PRIOR TO PLACING EMULSIFIED ASPHALT OR HMA OVERLAY. THIS WORK WILL NOT BE PAID FOR SEPARATELY BUT SHALL BE INCLUDED IN THE COST OF THE CIPR.

**LEGEND**

- ▲ - SAFETY EDGE WITH A 30°-35° SLOPE AND SHOULDER MATERIAL (SEE SAFETY EDGE DETAILS).
- ⬇ - SUBGRADE Z SLOPE 50:1 OR STEEPER. (2%)
- T - TOTAL THICKNESS OF THE PAVEMENT STRUCTURE FROM TOP OF PAVEMENT TO TOP OF SUBGRADE.
- - MINIMUM 4" TOPSOIL OR SPECIFIED ALTERNATIVE.

Print Date: 3/15/2017	
File Name: 21254DES_TypSect02.dgn	
Horiz. Scale: 1:1      Vert. Scale: As Noted	
Unit Information      Unit Leader Initials	

Sheet Revisions		
Date:	Comments	Init.
3/15/2017	Revised General Notes	AWG

Colorado Department of Transportation

1480 Quail Lake Loop, Suite A  
 Colorado Springs, CO 80906  
 Phone: 719-227-3231    FAX: 719-227-3298

**Region 2**      **DLH**

<b>As Constructed</b>
No Revisions:
Revised:
Void:

<b>TYPICAL SECTION SHEET</b>			
Designer:	AWG	Structure Numbers:	
Detailer:		Subset Sheets:	2 of 2
Sheet Subset:	TypSec		

<b>Project No./Code</b>
STA 067A-039
21254
Sheet Number 4a

GENERAL NOTES

**(R=)** 1. For preliminary plan quantities of pavement material, the following rates of application were used:

Hydrated Lime	@ 6.6 Lbs. / SY CIPR
Recycling Agent	@ 1.85 Gal / SY CIPR
Hot Mix Asphalt (Grading 75 ST)	@ 110 Lbs. / (SY Inch)
Tack Coat Undiluted Emul. Asphalt (Slow Setting)	@ 0.05 Gal. / SY (Undiluted) (HMA Overlay)
Tack Coat Undiluted Emul. Asphalt (Slow Setting)	@ 0.10 Gal. / SY (Undiluted) (CIPR)
Aggregate Base Course (Class 6)	@ 133 Lbs. / CF

2. Diluted emulsified asphalt for tack coat shall consist of 1 part water and 1 part emulsified asphalt. Rates of application shall be determined by the Engineer at the time of application.

3. The following shall be furnished with each bituminous paver.

- A. A ski type device at least 30 feet in length.
- B. A short ski or shoe.
- C. 6 inch shoe is required

4. All measurements were developed using the existing location of MP 52 for site A and MP 77 for site B as the origin. Stationing is approximate and was measured by a vehicle distance meter calibrated to 1000 LF.

5. It is estimated that 35 tons of Hot Mix Asphalt (Patching) (Asphalt) will be required for miscellaneous cracks, potholes and normal wear throughout the project. Locations will be determined by the Engineer in the field. It is estimated that 70 tons of hot mix asphalt (patching) will be required for paving the flared end section guardrail treatments. The total estimated amount of Hot Mix Asphalt (Patching) (Asphalt) is 105 tons.

6. Construction survey shall include staking the length of the project with location markings adjacent to the roadway every 500 feet to accommodate collection of delivery tickets and to record sample locations.

7. The Contractor shall maintain access to affected property owners at all times during construction.

8. The Contractor shall ensure that all work is performed within the existing right of way of the project.

9. Shoulder gravel shall not be dumped on the asphalt pavement and bladed to the shoulders. Gravel shall be dumped on the shoulder by side-dump equipment or other methods approved by the Engineer

10. The Contractor shall log the type, size, color and location of existing lane marking for duplication. The Contractor shall lay out all lane marking on the new surface as logged for final striping. This work will not be measured and paid for separately, but will be included in bid item 627 - Modified Epoxy Pavement Marking (Inlaid).

11. Contractor shall contact Traffic Operations – Eric Lundberg 719-546-5405 10 days prior to laying out new pavement markings to verify.

12. It is estimated that 5340 gals (2671 gallons yellow and 2669 gallons white) of Pavement Marking Paint (Waterborne) will be required. Full compliance striping shall be in place at the end of each day.

13. It is estimated that 2494 gals (1169 gallons yellow and 1325 gallons white) of Modified Epoxy Pavement marking (inlaid) will be required. The final striping shall begin at a point that matches the adjacent striping location and spacing.

14. Mobile pavement marking zone requirements apply only to the final striping Modified Epoxy Pavement Marking (Inlaid) application.

15. Where it is required to cut existing asphalt the cutting shall be done to a neat work line with a saw as approved by the Engineer. This work will not be paid for separately but shall be included in the cost of the work.

16. Excavation, compaction, and blading required to complete the approaches shall not be paid for separately, but shall be included in the work.

**(R=)** 17. The Site A paving limits, STA 2+00 to STA 939+89, shall be pavement smoothness category MRI Cat I. The Site B paving limits, STA 1000+00 to STA 1750+66, shall be pavement smoothness category MRI Cat IV.

18. It is estimated that the following items will be required for this project:

Potholing	(203-01597)	40 Hours
Field Office (Class 2)	(620-00002)	1 Each
Field Laboratory (Class 2)	(620-00012)	1 Each
Sanitary Facility	(620-00020)	1 Each
Construction Surveying	(625-00000)	1 Lump sum
Mobilization	(626-00000)	1 Lump sum
Mobile pavement marking	(630-80510)	1 Lump sum
Impact attenuator (temporary)	(630-85011)	100 Days

19. This is a non-significant project.

**(R=)** 20. All Type 3 Guardrail that shall be 10 gauge weathering steel in Federal Lands and shall be included in the cost of the work.

**(R=)** 21. The Contractor shall use items 211-00100 Drilling Hole and 211-02275 Cement Grout to fill voids in the subgrade at approximately Sta. 604+00 as approved by the Engineer. Quantities are sufficient for 12 holes to a depth of 20 LF for a total of 20 CY of 211-02275 Cement Grout. Excess materials from item 211-00100 Drilling Hole shall be disposed of off-site at the contractors expense or as approved by the Engineer.

22. All material from Unclassified Excavation (CIP) shall become property of the Contractor.

**(R=)** 23. 70% of all milling material shall be stockpiled at MP 58.32 for Site A and MP 85 for Site B, unless otherwise approved by the Engineer. This shall be in accordance with Revision of Section 202 – Removal of Asphalt Mat (Planing). All costs associated with stockpiling the material shall be incidental to the work.

24. Contractor shall not perform night work unless approved by the Engineer. Engineer shall contact CDOT Environmental Craig Clark for coordination.

**Note for projects without CDPS permits:**

A CDPS stormwater permit has not been acquired for this project since the anticipated disturbance area is under 1-acre. The Contractor shall submit a stormwater method statement detailing disturbance activities (e.g. blading, ditch work, staging on vegetation, exposure of roadway sub-base, etc.) Associated with the project at least 10-days prior to the pre-construction meeting. If the Contractor anticipates or exceeds 1-acre of disturbance, no earth disturbing activities will be authorized until a permit is acquired by CDOT. Additional costs or delays due to Contractor negligence or oversight are included in the cost of the work. In order to complete this project without a CDPS permit the following conditions apply:

- 1. Shouldering material shall be compacted immediately after placement.
- 2. Staging and overnight parking areas will occur on pre-existing pull-outs areas as practical and be pre-approved by the CDOT.
- 3. State waters and wetlands will be flagged prior to construction and the Contractor will not to shoulder adjacent to these areas.

BMPs will be implemented and maintained to protect state waters and sensitive areas from pollutant sources.



**Know what's below.  
Call before you dig.**

Print Date: 3/15/2017		<b>Sheet Revisions</b>			<p>Colorado Department of Transportation 1480 Quail Lake Loop, Suite A Colorado Springs, CO 80906 Phone: 719-227-3231 FAX: 719-227-3298</p> <p><b>Region 2</b></p>	<b>As Constructed</b> No Revisions: Revised: Void:	<b>GENERAL NOTES</b>				Project No./Code	
File Name: 21254DES_GenlNote01.dgn		Date:	Comments	Init.							STA 067A-039	
Horiz. Scale: 1:1      Vert. Scale: As Noted		3/15/2017	Notes 1, 17, 20, 21 & 23	AWG			21254					
Unit Information      Unit Leader Initials							Designer:      AWG	Structure Numbers	Sheet Subset:      GenNote	Subset Sheets:      1 of 1	Sheet Number      5a	

gibberta 5:47:52 AM C:\Projects\21254 - SH 67 Cripple Creek to Westcreek\Design\Drawings\21254DES\_SAO01.dgn

INDEX			CONTRACT ITEM NO.	CONTRACT ITEM	UNIT	ROADWAY		STRUCTURES		STRUCTURES		STRUCTURES		STRUCTURES		PROJECT TOTALS		
BOOK	PAGE	SHEET				PLAN	AS CONST.	PLAN	AS CONST.	PLAN	AS CONST.	PLAN	AS CONST.	PLAN	AS CONST.	PLAN	AS CONST.	
			202-00090	Removal of Delineator	EACH	1,126											1,126	
			202-00206	Removal of Concrete Curb Ramp	SY	1.8											1.8	
			202-00226	Removal of Asphalt Mat (Special)	SY	35											35	
(R-1)			202-00240	Removal of Asphalt Mat (Planing)	SY	9,174											9,174	
			202-00425	Removal of Bridge Railing	LF				216								216	
			202-00810	Removal of Ground Sign	EACH	97											97	
			202-00821	Removal of Sign Panel	EACH	27											27	
			202-01130	Removal of Guardrail Type 3	LF	9,931											9,931	
(R-1)			202-01300	Removal of End Anchorage	EACH	34											34	
			203-00010	Unclassified Excavation (Complete In Place)	CY	400											400	
			203-00060	Embankment Material (Complete In Place)	CY	585											585	
			203-01597	Potholing	HOUR	40											40	
			208-00002	Erosion Log Type 1 (12 Inch)	LF	2,000											2,000	
			208-00035	Aggregate Bag	LF	30											30	
			208-00045	Concrete Washout Structure	EACH	1											1	
			208-00103	Removal and Disposal of Sediment (Labor)	HOUR	20											20	
			208-00105	Removal and Disposal of Sediment (Equipment)	HOUR	20											20	
			208-00106	Sweeping (Sediment Removal)	HOUR	100											100	
			210-04035	Modify Guardrail (Special)	LF	11,977											11,977	
			211-00100	Drilling Hole	LF	240											240	
			211-02275	Cement Grout	CY	20											20	
			240-00000	Wildlife Biologist	HOUR	5											5	
			240-00010	Removal of Nests	HOUR	10											10	
			304-06000	Aggregate Base Course (Class 6)	TON	600											600	
			304-08000	Aggregate Base Course (Shoulder Material)	TON	3,851											3,851	
(R-1)			307-00000	Hydrated Lime	TON	1,118											1,118	
			403-00720	Hot Mix Asphalt (Patching) (Asphalt)	TON	105											105	
(R-1)			403-36721	Hot Mix Asphalt (Grading ST)(75)(PG 58-28)	TON	49,755											49,755	
(R-1)			406-09500	Cold Bituminous Pavement (Recycle)	SY	338,682											338,682	
(R-1)			411-10255	Emulsified Asphalt (Slow-Setting)	GAL	45,634											45,634	
(R-1)			411-90040	Recycling Agent	GAL	626,806											626,806	
			518-03000	Sawing and Sealing Bridge Joint	LF				241								241	
			606-00301	Guardrail Type 3 (6-3 Post Spacing) (31" MGS)	LF	13,187											13,187	

Print Date: 3/15/2017	
File Name: 21254DES_SAO01.dgn	
Horiz. Scale: 1:1	Vert. Scale: As Noted
Unit Information	Unit Leader Initials

Sheet Revisions		
Date:	Comments	Init.
3/15/2017	Revised Quantities	AWG

Colorado Department of Transportation



1480 Quail Lake Loop, Suite A  
 Colorado Springs, CO 80906  
 Phone: 719-227-3231 FAX: 719-227-3298

Region 2 DLH

As Constructed	
No Revisions:	
Revised:	
Void:	

SUMMARY OF APPROXIMATE QUANTITIES			
Designer:	AWG	Structure Numbers	
Detailer:			
Sheet Subset:	SAQ	Subset Sheets:	1 of 3

Project No./Code	
STA 067A-039	
21254	
Sheet Number	6a

gibberta 5:47:53 AM C:\Projects\21254 - SH 67 Cripple Creek to Westcreek\Design\Drawings\21254DES\_SAO02.dgn

INDEX			CONTRACT ITEM NO.	CONTRACT ITEM	UNIT	ROADWAY			STRUCTURES			STRUCTURES			STRUCTURES			PROJECT TOTALS	
BOOK	PAGE	SHEET				PLAN	AS CONST.		PLAN	AS CONST.		PLAN	AS CONST.		PLAN	AS CONST.		PLAN	AS CONST.
R-1			606-01370	Transition Type 3G (31" MGS)	EACH	12												12	
			606-01385	Transition Type 3J (31" MGS)	EACH	1												1	
			606-01390	End Anchorage Type 3K (31" MGS)	EACH	1												1	
R-1			606-02003	End Anchorage (Nonflared) (31" MGS)	EACH	18												18	
			606-02005	End Anchorage (Flared) (31" MGS)	EACH	26												26	
			606-11010	Bridge Rail Type 10R	LF				216									216	
			608-00015	Detectable Warnings	SF	176												176	
			612-00036	Delineator (Flexible) (Square Base)	EACH	1,126												1,126	
			614-00011	Sign Panel (Class I)	SF	447												447	
			614-00012	Sign Panel (Class II)	SF	838												838	
			614-00013	Sign Panel (Class III)	SF	66												66	
			614-01503	Steel Sign Support (2-Inch Round)(Post and Socket)	EACH	48												48	
			614-01573	Steel Sign Support (2-1/2 Inch Round NP-40)(Post & Slipbase)	EACH	64												64	
			614-80001	Flashing Beacon (Solar Powered)	EACH	3												3	
			614-80385	Rumble Strip	LF	135,084												135,084	
			620-00002	Field Office (Class 2)	EACH	1												1	
			620-00012	Field Laboratory (Class 2)	EACH	1												1	
			620-00020	Sanitary Facility	EACH	1												1	
			625-00000	Construction Surveying	L S	1												1	
			626-00000	Mobilization	L S	1												1	
			627-00009	Modified Epoxy Pavement Marking(Inlaid)	GAL	2,494												2,494	
			627-00011	Pavement Marking Paint (Waterborne)	GAL	5,340												5,340	
			627-30405	Preformed Thermoplastic Pavement Marking (Word-Symbol)	SF	655												655	
			627-30410	Preformed Thermoplastic Pavement Marking (Xwalk-Stop Line)	SF	426												426	
			630-00000	Flagging	HOUR	3,636												3,636	
			630-00001	Pilot Car Operation	HOUR	800												800	
			630-00007	Traffic Control Inspection	DAY	78												78	
			630-00012	Traffic Control Management	DAY	101												101	
			630-80001	Flashing Beacon (Portable)	EACH	2												2	
			630-80341	Construction Traffic Sign (Panel Size A)	EACH	38												38	
			630-80342	Construction Traffic Sign (Panel Size B)	EACH	75												75	

Print Date: 3/15/2017	
File Name: 21254DES_SAO02.dgn	
Horiz. Scale: 1:1	Vert. Scale: As Noted
Unit Information	Unit Leader Initials

Sheet Revisions		
Date:	Comments	Init.
3/15/2017	Revised Quantities	AWG

Colorado Department of Transportation



1480 Quail Lake Loop, Suite A  
 Colorado Springs, CO 80906  
 Phone: 719-227-3231 FAX: 719-227-3298

Region 2 DLH

As Constructed
No Revisions:
Revised:
Void:

SUMMARY OF APPROXIMATE QUANTITIES			
Designer:	awg	Structure Numbers	
Detailer:			
Sheet Subset:	saq	Subset Sheets:	2 of 3

Project No./Code
STA 067A-039
21254
Sheet Number 7a

**SH 67 Surface Quantities**

BEGIN STATION	END STATION	LENGTH	BEGIN WIDTH	END WIDTH	AVG. WIDTH	AREA	Hydrated Lime		Cold Bituminous Pavement (Recycle)		Recycling Agent		HOT MIX ASPHALT (GRADING ST) (75)		Emulsified Asphalt (Slow-Setting)		Aggregate Base Course (Shoulder Material)	
							307-00000	As-Built	406-09500	As-Built	411-90040	As-Built	403-36721	As-Built	411-10255	As-Built	304-08000	As-Built
							Ton	Ton	SY	SY	GAL	GAL	TONS	TONS	GAL	GAL	TONS	TONS
2+00	7+02	501.6	27.8	26.5	27.2	1513.2	5.0		1513.2		2800.4		124.8		151.3		11.1	
7+02	12+35	533.3	26.5	27.2	26.9	1591.0	5.3		1591.0		2944.4		131.3		159.1		11.8	
12+35	17+68	533.3	27.2	27.8	27.5	1629.5	5.4		1629.5		3015.7		134.4		162.9		11.8	
17+68	22+91	522.7	27.8	26.3	27.1	1571.1	5.2		1571.1		2907.6		129.6		157.1		11.6	
22+91	28+19	528.0	26.3	25.7	26.0	1525.3	5.0		1525.3		2823.0		125.8		152.5		11.7	
28+19	33+47	528.0	25.7	25.5	25.6	1501.9	5.0		1501.9		2779.5		123.9		150.2		11.7	
33+47	38+80	533.3	25.5	27.0	26.3	1555.4	5.1		1555.4		2878.6		128.3		155.5		11.8	
38+80	41+12	232.3	27.0	40.0	33.5	864.7	2.9		864.7		1600.4		71.3		86.5		5.1	
41+12	41+81	68.6	40.0	52.0	46.0	350.8	1.2		350.8		649.3		28.9		35.1		1.5	
41+81	42+13	31.7	52.0	52.0	52.0	183.0	0.6		183.0		338.8		15.1		18.3		0.7	
42+13	45+03	290.4	52.0	28.0	40.0	1290.7	4.3		1290.7		2388.7		106.5		129.1		6.4	
45+03	49+36	433.0	28.0	28.5	28.3	1359.0	4.5		1359.0		2515.2		112.1		135.9		9.6	
49+36	54+59	522.7	28.5	27.4	28.0	1623.3	5.4		1623.3		3004.3		133.9		162.3		11.6	
54+59	59+87	528.0	27.4	25.7	26.6	1557.6	5.1		1557.6		2882.7		128.5		155.8		11.7	
59+87	65+25	538.6	25.7	25.5	25.6	1531.9	5.1		1531.9		2835.1		126.4		153.2		11.9	
65+25	65+99	73.9	25.5	26.8	26.2	214.8	0.7		214.8		397.5		17.7		21.5		1.6	
65+99	69+64	364.3	26.8	26.8	26.8	1084.9	3.6		1084.9		2007.8		89.5		108.5		8.1	
69+64	75+97	633.6	26.8	28.0	27.4	1929.0	6.4		1929.0		3570.0		159.1		192.9		14.0	
75+97	77+24	126.7	28.0	37.7	32.9	462.5	1.5		462.5		856.0		38.2		46.3		2.8	
77+24	78+72	147.8	37.7	44.6	41.2	676.0	2.2		676.0		1251.0		55.8		67.6		3.3	
78+72	81+46	274.6	44.6	57.1	50.9	1551.3	5.1		1551.3		2871.0		128.0		155.1		6.1	
81+46	85+11	364.3	57.1	57.1	57.1	2311.4	7.6		2311.4		4277.8		190.7		231.1		8.1	
85+11	88+59	348.5	57.1	26.0	41.6	1608.8	5.3		1608.8		2977.5		132.7		160.9		7.7	
88+59	92+29	369.6	26.0	24.5	25.3	1036.9	3.4		1036.9		1919.1		85.5		103.7		8.2	
92+29	96+78	448.8	24.5	26.6	25.6	1274.1	4.2		1274.1		2358.0		105.1		127.4		9.9	
96+78	102+16	538.6	26.6	25.0	25.8	1543.9	5.1		1543.9		2857.3		127.4		154.4		11.9	
102+16	107+39	522.7	25.0	26.0	25.5	1481.0	4.9		1481.0		2741.0		122.2		148.1		11.6	
107+39	112+72	533.3	26.0	27.7	26.9	1591.0	5.3		1591.0		2944.4		131.3		159.1		11.8	
112+72	117+90	517.4	27.7	27.5	27.6	1586.8	5.2		1586.8		2936.8		130.9		158.7		11.5	
117+90	121+54	364.3	27.5	35.0	31.3	1265.0	4.2		1265.0		2341.2		104.4		126.5		8.1	
121+54	125+55	401.3	35.0	39.5	37.3	1660.9	5.5		1660.9		3073.8		137.0		166.1		8.9	
125+55	129+93	438.2	39.5	37.0	38.3	1862.5	6.1		1862.5		3447.0		153.7		186.3		9.7	
129+93	129+99	5.3	37.0	24.5	30.8	18.0	0.1		18.0		33.4		1.5		1.8		0.1	
129+99	134+26	427.7	24.5	26.0	25.3	1199.9	4.0		1199.9		2220.6		99.0		120.0		9.5	
134+26	139+07	480.5	26.0	26.9	26.5	1412.1	4.7		1412.1		2613.4		116.5		141.2		10.7	
139+07	144+35	528.0	26.9	25.7	26.3	1542.9	5.1		1542.9		2855.5		127.3		154.3		11.7	
144+35	149+63	528.0	25.7	26.0	25.9	1516.5	5.0		1516.5		2806.7		125.1		151.7		11.7	
149+63	154+91	528.0	26.0	28.0	27.0	1584.0	5.2		1584.0		2931.5		130.7		158.4		11.7	
154+91	160+19	528.0	28.0	26.0	27.0	1584.0	5.2		1584.0		2931.5		130.7		158.4		11.7	
160+19	165+47	528.0	26.0	26.2	26.1	1531.2	5.1		1531.2		2833.8		126.3		153.1		11.7	
165+47	170+75	528.0	26.2	25.7	26.0	1522.4	5.0		1522.4		2817.5		125.6		152.2		11.7	
SUBTOTALS							180.5		54700.1		101234.5		4512.8		5470.0		374.1	

Print Date: 3/15/2017  
 File Name: 21254DES\_Surf01.dgn  
 Horiz. Scale: 1:1      Vert. Scale: As Noted  
 Unit Information      Unit Leader Initials

Sheet Revisions		
Date:	Comments	Init.
3/15/2017	Revised Quantities	AWG

**Colorado Department of Transportation**



1480 Quail Lake Loop, Suite A  
 Colorado Springs, CO 80906  
 Phone: 719-227-3231      FAX: 719-227-3298

**Region 2**      **DLH**

**As Constructed**

No Revisions:

Revised:

Void:

**Tabulation of Resurfacing (Site A)**

Designer:	AWG	Structure Numbers
Detailer:		
Sheet Subset:	Surf	Subset Sheets: 1 of 9

**Project No./Code**

STA 067A-039

21254

Sheet Number      9a

**SH 67 Surface Quantities**

BEGIN STATION	END STATION	LENGTH	BEGIN WIDTH	END WIDTH	AVG. WIDTH	AREA	Hydrated Lime		Cold Bituminous Pavement (Recycle)		Recycling Agent		HOT MIX ASPHALT (GRADING ST) (75)		EMULSIFIED ASPHALT (SLOW-SETTING)		Aggregate Base Course (Shoulder Material)	
							307-00000	As-Built	406-09500	As-Built	411-90040	As-Built	403-36721	AS-BUILT	411-10255	AS-BUILT	304-08000	AS-BUILT
							Ton	Ton	SY	SY	GAL	GAL	TONS	TONS	GAL	GAL	TONS	TONS
170+75	176+08	533.3	25.7	25.4	25.6	1513.9	5.0		1513.9		2801.8		124.9		151.4		11.8	
176+08	181+31	522.7	25.4	25.9	25.7	1489.8	4.9		1489.8		2757.1		122.9		149.0		11.6	
181+31	183+84	253.4	25.9	29.8	27.9	784.3	2.6		784.3		1451.4		64.7		78.4		5.6	
183+84	187+17	332.6	29.8	28.4	29.1	1075.5	3.5		1075.5		1990.5		88.7		107.6		7.4	
187+17	191+87	469.9	28.4	26.5	27.5	1433.3	4.7		1433.3		2652.6		118.2		143.3		10.4	
191+87	197+31	543.8	26.5	28.7	27.6	1667.8	5.5		1667.8		3086.6		137.6		166.8		12.1	
197+31	202+43	512.2	28.7	28.5	28.6	1627.5	5.4		1627.5		3012.1		134.3		162.8		11.4	
202+43	207+71	528.0	28.5	29.2	28.9	1692.5	5.6		1692.5		3132.4		139.6		169.3		11.7	
207+71	213+25	554.4	29.2	29.5	29.4	1808.0	6.0		1808.0		3346.0		149.2		180.8		12.3	
213+25	218+27	501.6	29.5	29.9	29.7	1655.3	5.5		1655.3		3063.5		136.6		165.5		11.1	
218+27	222+81	454.1	29.9	28.9	29.4	1483.3	4.9		1483.3		2745.2		122.4		148.3		10.1	
222+81	225+40	258.7	28.9	31.4	30.2	866.7	2.9		866.7		1604.0		71.5		86.7		5.7	
225+40	229+36	396.0	31.4	32.5	32.0	1405.8	4.6		1405.8		2601.7		116.0		140.6		8.8	
229+36	230+04	68.6	32.5	28.4	30.5	232.2	0.8		232.2		429.8		19.2		23.2		1.5	
230+04	231+20	116.2	28.4	36.0	32.2	415.6	1.4		415.6		769.1		34.3		41.6		2.6	
231+20	233+05	184.8	36.0	53.4	44.7	917.8	3.0		917.8		1698.7		75.7		91.8		4.1	
233+05	234+16	110.9	53.4	60.1	56.8	699.2	2.3		699.2		1293.9		57.7		69.9		2.5	
234+16	235+32	116.2	60.1	66.0	63.1	813.8	2.7		813.8		1506.1		67.1		81.4		2.6	
235+32	239+65	433.0	66.0	64.5	65.3	3139.0	10.4		3139.0		5809.3		259.0		313.9		9.6	
239+65	245+14	549.1	64.5	45.6	55.1	3358.8	11.1		3358.8		6216.2		277.1		335.9		12.2	
245+14	250+32	517.4	45.6	42.8	44.2	2541.2	8.4		2541.2		4703.1		209.6		254.1		11.5	
250+32	252+91	258.7	42.8	37.6	40.2	1155.6	3.8		1155.6		2138.7		95.3		115.6		5.7	
252+91	252+96	5.3	37.6	27.6	32.6	19.1	0.1		19.1		35.4		1.6		1.9		0.1	
252+96	260+51	755.0	27.6	27.6	27.6	2315.5	7.6		2315.5		4285.3		191.0		231.5		16.7	
260+51	265+89	538.6	27.6	27.9	27.8	1660.6	5.5		1660.6		3073.2		137.0		166.1		11.9	
265+89	271+12	522.7	27.9	28.5	28.2	1637.9	5.4		1637.9		3031.2		135.1		163.8		11.6	
271+12	275+35	422.4	28.5	29.0	28.8	1349.3	4.5		1349.3		2497.2		111.3		134.9		9.4	
275+35	281+63	628.3	29.0	28.9	29.0	2021.1	6.7		2021.1		3740.5		166.7		202.1		13.9	
281+63	287+01	538.6	28.9	28.5	28.7	1717.4	5.7		1717.4		3178.4		141.7		171.7		11.9	
287+01	292+19	517.4	28.5	28.6	28.6	1641.4	5.4		1641.4		3037.8		135.4		164.1		11.5	
292+19	297+52	533.3	28.6	28.3	28.5	1685.8	5.6		1685.8		3119.9		139.1		168.6		11.8	
297+52	302+75	522.7	28.3	27.2	27.8	1611.7	5.3		1611.7		2982.8		133.0		161.2		11.6	
302+75	306+23	348.5	27.2	29.9	28.6	1105.5	3.6		1105.5		2045.9		91.2		110.5		7.7	
306+23	311+46	522.7	29.9	31.8	30.9	1791.8	5.9		1791.8		3316.1		147.8		179.2		11.6	
311+46	311+88	42.2	31.8	28.5	30.2	141.5	0.5		141.5		261.9		11.7		14.2		0.9	
311+88	315+53	364.3	28.5	27.9	28.2	1141.5	3.8		1141.5		2112.7		94.2		114.2		8.1	
315+53	322+97	744.5	27.9	28.0	28.0	2312.0	7.6		2312.0		4278.9		190.7		231.2		16.5	
322+97	328+67	570.2	28.0	27.9	28.0	1770.9	5.8		1770.9		3277.5		146.1		177.1		12.6	
328+67	333+06	438.2	27.9	29.6	28.8	1399.9	4.6		1399.9		2590.9		115.5		140.0		9.7	
333+06	343+25	1019.0	29.6	29.6	29.6	3351.5	11.1		3351.5		6202.7		276.5		335.2		22.6	
343+25	349+69	644.2	29.6	29.2	29.4	2104.3	6.9		2104.3		3894.4		173.6		210.4		14.3	
SUBTOTALS							206.4		62555.44533		115772.5778		5160.8		6255.5		396.6	

Print Date: 3/15/2017  
 File Name: 21254DES\_Surf02.dgn  
 Horiz. Scale: 1:1      Vert. Scale: As Noted  
 Unit Information      Unit Leader Initials

Sheet Revisions		
Date:	Comments	Init.
3/15/2017	Revised Quantities	AWG

**Colorado Department of Transportation**



1480 Quail Lake Loop, Suite A  
 Colorado Springs, CO 80906  
 Phone: 719-227-3231      FAX: 719-227-3298

**Region 2      DLH**

As Constructed	Tabulation of Resurfacing (Site A)	
No Revisions:	Designer:	AWG
Revised:	Detailer:	Structure Numbers
Void:	Sheet Subset:	Surf      Subset Sheets: 2 of 9

**Project No./Code**  
 STA 067A-039  
 21254  
 Sheet Number 10a



**SH 67 Surface Quantities**

BEGIN STATION	END STATION	LENGTH	BEGIN WIDTH	END WIDTH	AVG. WIDTH	AREA	Hydrated Lime		Cold Bituminous Pavement (Recycle)		Recycling Agent		HOT MIX ASPHALT (GRADING ST) (75)		EMULSIFIED ASPHALT (SLOW-SETTING)		Aggregate Base Course (Shoulder Material)	
							307-00000	As-Built	406-09500	As-Built	411-90040	As-Built	403-36721	AS-BUILT	411-10255	AS-BUILT	304-08000	AS-BUILT
							Ton	Ton	SY	SY	GAL	GAL	TONS	TONS	GAL	GAL	TONS	TONS
349+69	353+44	374.9	29.2	30.0	29.6	1232.9	4.1		1232.9		2281.8		101.7		123.3		8.3	
353+44	363+47	1003.2	30.0	28.0	29.0	3232.5	10.7		3232.5		5982.5		266.7		323.3		22.2	
363+47	372+29	881.8	28.0	32.0	30.0	2939.2	9.7		2939.2		5439.6		242.5		293.9		19.5	
372+29	384+48	1219.7	32.0	31.0	31.5	4268.9	14.1		4268.9		7900.5		352.2		426.9		27.0	
384+48	393+14	865.9	31.0	29.0	30.0	2886.4	9.5		2886.4		5341.9		238.1		288.6		19.2	
393+14	397+21	406.6	29.0	29.0	29.0	1310.0	4.3		1310.0		2424.5		108.1		131.0		9.0	
397+21	399+53	232.3	29.0	41.0	35.0	903.5	3.0		903.5		1672.1		74.5		90.3		5.1	
399+53	403+07	353.8	41.0	41.0	41.0	1611.6	5.3		1611.6		2982.6		133.0		161.2		7.8	
403+07	403+12	5.3	41.0	27.0	34.0	19.9	0.1		19.9		36.9		1.6		2.0		0.1	
403+12	404+65	153.1	27.0	27.0	27.0	459.4	1.5		459.4		850.1		37.9		45.9		3.4	
404+65	408+35	369.6	27.0	27.7	27.4	1123.2	3.7		1123.2		2078.7		92.7		112.3		8.2	
408+35	414+00	565.0	27.7	27.0	27.4	1716.9	5.7		1716.9		3177.4		141.6		171.7		12.5	
414+00	418+96	496.3	27.0	26.8	26.9	1483.4	4.9		1483.4		2745.4		122.4		148.3		11.0	
418+96	424+24	528.0	26.8	26.5	26.7	1563.5	5.2		1563.5		2893.5		129.0		156.3		11.7	
424+24	429+52	528.0	26.5	26.5	26.5	1554.7	5.1		1554.7		2877.3		128.3		155.5		11.7	
429+52	434+75	522.7	26.5	26.3	26.4	1533.3	5.1		1533.3		2837.7		126.5		153.3		11.6	
434+75	440+24	549.1	26.3	27.7	27.0	1647.4	5.4		1647.4		3048.8		135.9		164.7		12.2	
440+24	445+36	512.2	27.7	28.1	27.9	1587.7	5.2		1587.7		2938.4		131.0		158.8		11.4	
445+36	447+21	184.8	28.1	28.1	28.1	577.0	1.9		577.0		1067.8		47.6		57.7		4.1	
447+21	450+64	343.2	28.1	27.7	27.9	1063.9	3.5		1063.9		1969.0		87.8		106.4		7.6	
450+64	458+35	770.9	27.7	31.7	29.7	2543.9	8.4		2543.9		4708.1		209.9		254.4		17.1	
458+35	466+48	813.1	31.7	30.4	31.1	2805.3	9.3		2805.3		5191.8		231.4		280.5		18.0	
466+48	472+40	591.4	30.4	31.0	30.7	2017.2	6.7		2017.2		3733.3		166.4		201.7		13.1	
472+40	477+04	464.6	31.0	30.4	30.7	1584.9	5.2		1584.9		2933.3		130.8		158.5		10.3	
477+04	482+48	543.8	30.4	28.3	29.4	1773.5	5.9		1773.5		3282.3		146.3		177.4		12.1	
482+48	487+81	533.3	28.3	26.6	27.5	1626.5	5.4		1626.5		3010.2		134.2		162.7		11.8	
487+81	493+46	565.0	26.6	26.7	26.7	1672.9	5.5		1672.9		3096.1		138.0		167.3		12.5	
493+46	498+11	464.6	26.7	28.6	27.7	1427.5	4.7		1427.5		2641.9		117.8		142.7		10.3	
498+11	504+44	633.6	28.6	29.3	29.0	2038.1	6.7		2038.1		3771.9		168.1		203.8		14.0	
504+44	508+77	433.0	29.3	30.7	30.0	1443.2	4.8		1443.2		2671.0		119.1		144.3		9.6	
508+77	514+69	591.4	30.7	29.0	29.9	1961.3	6.5		1961.3		3629.9		161.8		196.1		13.1	
514+69	520+55	586.1	29.0	27.0	28.0	1823.4	6.0		1823.4		3374.5		150.4		182.3		13.0	
520+55	525+72	517.4	27.0	27.3	27.2	1560.9	5.2		1560.9		2888.9		128.8		156.1		11.5	
525+72	530+84	512.2	27.3	26.6	27.0	1533.6	5.1		1533.6		2838.3		126.5		153.4		11.4	
530+84	536+76	591.4	26.6	27.5	27.1	1777.4	5.9		1777.4		3289.4		146.6		177.7		13.1	
536+76	540+30	353.8	27.5	27.5	27.5	1080.9	3.6		1080.9		2000.5		89.2		108.1		7.8	
540+30	546+84	654.7	27.5	28.7	28.1	2044.2	6.7		2044.2		3783.2		168.6		204.4		14.5	
546+84	551+81	496.3	28.7	29.5	29.1	1604.8	5.3		1604.8		2970.0		132.4		160.5		11.0	
551+81	556+93	512.2	29.5	28.0	28.8	1636.1	5.4		1636.1		3027.9		135.0		163.6		11.4	
556+93	561+68	475.2	28.0	27.7	27.9	1470.5	4.9		1470.5		2721.4		121.3		147.0		10.5	
561+68	567+80	612.5	27.7	26.8	27.3	1854.5	6.1		1854.5		3432.1		153.0		185.4		13.6	
<b>SUBTOTALS</b>							231.0		69995.7		129542.5		5774.6		6999.6		483.5	

Print Date: 3/15/2017
File Name: 21254DES_Surf03.dgn
Horiz. Scale: 1:1      Vert. Scale: As Noted
Unit Information      Unit Leader Initials

Sheet Revisions		
Date:	Comments	Init.
3/15/2017	Revised Quantities	AWG

**Colorado Department of Transportation**



1480 Quail Lake Loop, Suite A  
 Colorado Springs, CO 80906  
 Phone: 719-227-3231    FAX: 719-227-3298

**Region 2      DLH**

As Constructed
No Revisions:
Revised:
Void:

Tabulation of Resurfacing (Site A)			
Designer:	AWG	Structure Numbers	
Detailer:			
Sheet Subset:	Surf	Subset Sheets:	3 of 9

Project No./Code
STA 067A-039
21254
Sheet Number 11a

gibberta 5:48:05 AM C:\Projects\21254 - SH 67 Cripple Creek to Westcreek\Design\Drawings\21254DES\_Surf03.dgn

**SH 67 Surface Quantities**

BEGIN STATION	END STATION	LENGTH	BEGIN WIDTH	END WIDTH	AVG. WIDTH	AREA	Hydrated Lime		Cold Bituminous Pavement (Recycle)		Recycling Agent		HOT MIX ASPHALT (GRADING ST) (75)		EMULSIFIED ASPHALT (SLOW-SETTING)		Aggregate Base Course (Shoulder Material)	
							307-00000	As-Built	406-09500	As-Built	411-90040	As-Built	403-36721	AS-BUILT	411-10255	AS-BUILT	304-08000	AS-BUILT
							Ton	Ton	SY	SY	GAL	GAL	TONS	TONS	GAL	GAL	TONS	TONS
567+80	572+87	506.9	26.8	27.8	27.3	1537.5	5.1		1537.5		2845.5		126.8		153.8		11.2	
572+87	579+58	670.6	27.8	26.5	27.2	2022.9	6.7		2022.9		3743.7		166.9		202.3		14.9	
579+58	583+80	422.4	26.5	27.0	26.8	1255.5	4.1		1255.5		2323.5		103.6		125.5		9.4	
583+80	591+04	723.4	27.0	27.1	27.1	2174.1	7.2		2174.1		4023.6		179.4		217.4		16.0	
591+04	598+43	739.2	27.1	27.0	27.1	2221.7	7.3		2221.7		4111.8		183.3		222.2		16.4	
598+43	605+98	755.0	27.0	29.9	28.5	2386.8	7.9		2386.8		4417.2		196.9		238.7		16.7	
605+98	609+04	306.2	29.9	27.0	28.5	968.1	3.2		968.1		1791.6		79.9		96.8		6.8	
609+04	615+43	638.9	27.0	27.5	27.3	1934.4	6.4		1934.4		3580.0		412.9		270.2		14.2	
615+43	620+18	475.2	27.5	29.0	28.3	1491.6	4.9		1491.6		2760.5		123.1		149.2		10.5	
620+18	627+42	723.4	29.0	28.7	28.9	2318.8	7.7		2318.8		4291.4		191.3		231.9		16.0	
627+42	631+06	364.3	28.7	29.3	29.0	1173.9	3.9		1173.9		2172.6		96.8		117.4		8.1	
631+06	635+86	480.5	29.3	29.7	29.5	1574.9	5.2		1574.9		2914.7		129.9		157.5		10.7	
635+86	640+67	480.5	29.7	28.8	29.3	1561.6	5.2		1561.6		2890.0		128.8		156.2		10.7	
640+67	647+16	649.4	28.8	28.7	28.8	2074.6	6.8		2074.6		3839.5		171.2		207.5		14.4	
647+16	657+09	992.6	28.7	28.1	28.4	3132.3	10.3		3132.3		5797.1		258.4		313.2		22.0	
657+09	661+74	464.6	28.1	28.1	28.1	1450.7	4.8		1450.7		2684.9		119.7		145.1		10.3	
661+74	667+23	549.1	28.1	28.0	28.1	1711.4	5.6		1711.4		3167.4		141.2		171.1		12.2	
667+23	672+56	533.3	28.0	28.7	28.4	1679.8	5.5		1679.8		3108.9		138.6		168.0		11.8	
672+56	677+84	528.0	28.7	27.8	28.3	1657.3	5.5		1657.3		3067.3		136.7		165.7		11.7	
677+84	682+91	506.9	27.8	30.4	29.1	1638.9	5.4		1638.9		3033.2		135.2		163.9		11.2	
682+91	688+19	528.0	30.4	30.4	30.4	1783.5	5.9		1783.5		3300.7		147.1		178.3		11.7	
688+19	692+41	422.4	30.4	30.4	30.4	1426.8	4.7		1426.8		2640.6		117.7		142.7		9.4	
692+41	698+80	638.9	30.4	31.0	30.7	2179.3	7.2		2179.3		4033.3		179.8		217.9		14.2	
698+80	704+13	533.3	31.0	30.3	30.7	1816.1	6.0		1816.1		3361.1		149.8		181.6		11.8	
704+13	712+21	807.8	30.3	28.3	29.3	2630.0	8.7		2630.0		4867.3		217.0		263.0		17.9	
712+21	714+80	258.7	28.3	28.1	28.2	810.7	2.7		810.7		1500.3		66.9		81.1		5.7	
714+80	721+19	638.9	28.1	28.5	28.3	2008.9	6.6		2008.9		3718.0		165.7		200.9		14.2	
721+19	727+84	665.3	28.5	42.5	35.5	2624.2	8.7		2624.2		4856.6		216.5		262.4		14.7	
727+84	730+48	264.0	42.5	46.0	44.3	1298.0	4.3		1298.0		2402.2		107.1		129.8		5.9	
730+48	733+91	343.2	46.0	60.0	53.0	2021.1	6.7		2021.1		3740.4		166.7		202.1		7.6	
733+91	738+98	506.9	60.0	59.3	59.7	3359.5	11.1		3359.5		6217.5		277.2		335.9		11.2	
738+98	741+57	258.7	59.3	49.9	54.6	1569.6	5.2		1569.6		2904.8		129.5		157.0		5.7	
741+57	748+38	681.1	49.9	32.6	41.3	3121.8	10.3		3121.8		5777.6		257.5		312.2		15.1	
748+38	756+83	844.8	32.6	28.9	30.8	2886.4	9.5		2886.4		5341.9		238.1		288.6		18.7	
756+83	762+37	554.4	28.9	29.0	29.0	1783.3	5.9		1783.3		3300.4		147.1		178.3		12.3	
762+37	767+86	549.1	29.0	29.6	29.3	1787.7	5.9		1787.7		3308.5		147.5		178.8		12.2	
767+86	773+14	528.0	29.6	28.9	29.3	1716.0	5.7		1716.0		3175.8		141.6		171.6		11.7	
773+14	781+64	850.1	28.9	27.8	28.4	2677.8	8.8		2677.8		4955.8		220.9		267.8		18.8	
781+64	788+93	728.6	27.8	29.0	28.4	2299.3	7.6		2299.3		4255.3		189.7		229.9		16.2	
788+93	794+37	543.8	29.0	28.7	28.9	1743.3	5.8		1743.3		3226.4		143.8		174.3		12.1	
794+37	803+35	897.6	28.7	28.5	28.6	2852.4	9.4		2852.4		5278.9		235.3		285.2		79.0	
<b>SUBTOTALS</b>							265.2		80362.2		148727.8		6883.2		8113.0		581.2	

Print Date: 3/15/2017

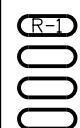
File Name: 21254DES\_Surf04.dgn

Horiz. Scale: 1:1

Vert. Scale: As Noted

Unit Information

Unit Leader Initials



**Sheet Revisions**

Date:	Comments	Init.
3/15/2017	Revised Quantities	AWG

Colorado Department of Transportation



1480 Quail Lake Loop, Suite A  
Colorado Springs, CO 80906  
Phone: 719-227-3231 FAX: 719-227-3298

Region 2

DLH

**As Constructed**

No Revisions:

Revised:

Void:

**Tabulation of Resurfacing (Site A)**

Designer:	AWG	Structure Numbers	
Detailer:			
Sheet Subset:	Surf	Subset Sheets:	4 of 9

**Project No./Code**

STA 067A-039

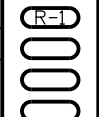

21254

Sheet Number 12a

**SH 67 Surface Quantities**

BEGIN STATION	END STATION	LENGTH	BEGIN WIDTH	END WIDTH	AVG. WIDTH	AREA	Hydrated Lime		Cold Bituminous Pavement (Recycle)		Recycling Agent		HOT MIX ASPHALT (GRADING ST) (75)		EMULSIFIED ASPHALT (SLOW-SETTING)		Aggregate Base Course (Shoulder Material)		
							307-00000	As-Built	406-09500	As-Built	411-90040	As-Built	403-36721	AS-BUILT	411-10255	AS-BUILT	304-08000	AS-BUILT	
							Ton	Ton	SY	SY	GAL	GAL	TONS	TONS	GAL	GAL	TONS	TONS	
803+35	810+42	707.5	28.5	28.8	28.7	2252.3	7.4		2252.3		4168.3		185.8		225.2		15.7		
810+42	817+65	723.4	28.8	28.3	28.6	2294.7	7.6		2294.7		4246.8		189.3		229.5		16.0		
817+65	827+37	971.5	28.3	28.5	28.4	3065.7	10.1		3065.7		5673.7		252.9		306.6		21.5		
827+37	830+91	353.8	28.5	28.3	28.4	1116.3	3.7		1116.3		2066.0		92.1		111.6		7.8		
830+91	836+77	586.1	28.3	29.4	28.9	1878.7	6.2		1878.7		3477.0		155.0		187.9		13.0		
836+77	841+36	459.4	29.4	28.5	29.0	1477.6	4.9		1477.6		2734.6		121.9		147.8		10.2		
841+36	846+80	543.8	28.5	28.5	28.5	1722.2	5.7		1722.2		3187.2		142.1		172.2		12.1		
846+80	852+13	533.3	28.5	28.0	28.3	1673.9	5.5		1673.9		3097.9		138.1		167.4		11.8		
852+13	862+27	1013.8	28.0	29.9	29.0	3260.9	10.8		3260.9		6035.1		269.0		326.1		22.5		
862+27	868+24	596.6	29.9	28.3	29.1	1929.1	6.4		1929.1		3570.3		159.2		192.9		13.2		
868+24	878+69	1045.4	28.3	28.2	28.3	3281.5	10.8		3281.5		6073.2		270.7		328.2		23.2		
878+69	884+13	543.8	28.2	28.2	28.2	1704.0	5.6		1704.0		3153.7		140.6		170.4		12.1		
884+13	891+31	718.1	28.2	29.2	28.7	2289.9	7.6		2289.9		4237.9		188.9		229.0		15.9		
891+31	899+44	813.1	29.2	28.7	29.0	2615.5	8.6		2615.5		4840.6		215.8		261.6		18.0		
899+44	904+72	528.0	28.7	29.0	28.9	1692.5	5.6		1692.5		3132.4		139.6		169.3		11.7		
904+72	912+11	739.2	29.0	28.2	28.6	2349.0	7.8		2349.0		4347.4		193.8		234.9		16.4		
912+11	916+02	390.7	28.2	28.8	28.5	1237.3	4.1		1237.3		2289.9		102.1		123.7		8.7		
916+02	920+83	480.5	28.8	28.5	28.7	1529.5	5.0		1529.5		2830.7		126.2		153.0		10.7		
920+83	922+67	184.8	28.5	28.5	28.5	585.2	1.9		585.2		1083.0		48.3		58.5		4.1		
922+67	922+73	5.3	28.5	56.1	42.3	24.8	0.1		24.8		45.9		2.0		2.5		0.1		
922+73	926+69	396.0	56.1	48.4	52.3	2299.0	7.6		2299.0		4254.8		189.7		229.9		8.8		
926+69	927+16	47.5	48.4	48.4	48.4	255.6	0.0		0.0		0.0		28.1		12.8		1.1		
927+16	929+06	190.1	48.4	56.5	52.5	1107.7	0.0		0.0		0.0		121.9		55.4		4.2		
929+06	931+39	232.3	56.5	57.2	56.9	1467.5	0.0		0.0		0.0		161.4		73.4		5.1		
931+39	931+76	37.0	57.2	57.7	57.5	235.9	0.0		0.0		0.0		26.0		11.8		0.8		
931+76	932+81	105.6	57.7	59.0	58.4	684.6	0.0		0.0		0.0		75.3		34.2		2.3		
932+81	933+50	68.6	59.0	63.0	61.0	465.2	0.0		0.0		0.0		51.2		23.3		1.5		
933+50	936+14	264.0	63.0	62.9	63.0	1846.5	0.0		0.0		0.0		203.1		92.3		5.9		
936+14	936+93	79.2	62.9	61.8	62.4	548.7	0.0		0.0		0.0		60.4		27.4		1.8		
936+93	937+88	95.0	61.8	68.6	65.2	688.5	0.0		0.0		0.0		75.7		34.4		2.1		
937+88	938+57	68.6	68.6	73.3	71.0	541.1	0.0		0.0		0.0		59.5		27.1		1.5		
938+57	939+04	47.5	73.3	72.0	72.7	383.6	0.0		0.0		0.0		42.2		19.2		1.1		
939+04	939+46	42.2	72.0	45.0	58.5	274.6	0.0		0.0		0.0		30.2		13.7		0.9		
939+46	939+89	42.2	45.0	45.0	45.0	211.2	0.0		0.0		0.0		23.2		10.6		0.9		
<b>SUBTOTALS</b>																			
<b>SITE A FULL-WIDTH OVERLAY QUANTITIES</b>							316392.7	1016.0		307893.1		569823.8		26589.5		31291.1		2138.1	
<b>SITE A GUARDRAIL TOTALS</b>																			
<b>SITE A ROAD APPROACH TOTALS*</b>							N/A							836.0		506.7			
<b>SITE A IRREGULARITIES: 10.0%</b>							N/A	101.6		30789.3		56982.4		548.5		636.0			
<b>TOTAL</b>							<b>316,393</b>	<b>1,118</b>		<b>338,682</b>		<b>626,806</b>		<b>27,975</b>		<b>32,434</b>		<b>2,139</b>	
<b>AS CONSTRUCTED</b>							N/A												

- NOTES:
1. ABC CLASS 6 (SHOULDER MATERIAL) QUANTITIES WERE CALCULATED USING 2 - 2' X 2" TRIANGLES.
  2. SITE A TOTALS CARRIED TO SITE B TABULATION
  3. PAVEMENT DEPTH FOR SLOW VEHICLE PULLOFF AT 6" AND QUANTITIES BASED ON EXISTING WIDTH AND SURFACE AREA OF PROPOSED PULLOFF

Print Date: 3/15/2017		<b>Sheet Revisions</b>			 Colorado Department of Transportation 1480 Quail Lake Loop, Suite A Colorado Springs, CO 80906 Phone: 719-227-3231 FAX: 719-227-3298 <b>Region 2</b>	<b>As Constructed</b>		<b>Tabulation of Resurfacing (Site A)</b>			<b>Project No./Code</b>	
File Name: 21254DES_Surf05.dgn		Date:	Comments	Init.		No Revisions:	Designer: AWG Structure Numbers			STA 067A-039		
Horiz. Scale: 1:1 Vert. Scale: As Noted		3/15/2017	Revised Quantities	AWG		Revised:	Detailer:			21254		
Unit Information Unit Leader Initials						Void:	Sheet Subset: Surf	Subset Sheets: 5 of 9	Sheet Number 13a			

gibberta 5:48:16 AM C:\Projects\21254 - SH 67 Cripple Creek to Westcreek\Design\Drawings\21254DES\_Surf05.dgn

gibberta 5:48:21 AM C:\Projects\21254 - SH 67 Cripple Creek to Westcreek\Design\Drawings\21254DES\_Surf09.dgn

### SH 67 Surface Quantities

BEGIN STATION	END STATION	LENGTH LF	BEGIN WIDTH LF	END WIDTH LF	AVG. WIDTH LF	AREA SY	Hot Mix Asphalt (Grading ST)(75)(PG 58-28)		Emulsified Asphalt (Slow-Setting)		Aggregate Base Course (Shoulder Material)	
							403-36721	AS-BUILT	411-10255	AS-BUILT	304-08000	AS-BUILT
							TONS	TONS	GAL	GAL	TONS	TONS
1576+73	1584+65	792.0	24.9	25.0	25.0	2195.6	181.1		109.8		17.6	
1584+65	1591+36	670.6	25.0	25.1	25.1	1866.4	154.0		93.3		14.9	
1591+36	1596+90	554.4	25.1	24.9	25.0	1540.0	127.1		77.0		12.3	
1596+90	1604+67	776.2	24.9	26.0	25.5	2194.8	181.1		109.7		17.2	
1604+67	1611+58	691.7	26.0	25.0	25.5	1959.8	161.7		98.0		15.3	
1611+58	1619+82	823.7	25.0	26.2	25.6	2342.9	193.3		117.1		18.3	
1619+82	1629+27	945.1	26.2	25.5	25.9	2714.6	224.0		135.7		21.0	
1629+27	1635+71	644.2	25.5	24.0	24.8	1771.4	146.1		88.6		14.3	
1635+71	1642+15	644.2	24.0	24.5	24.3	1735.7	143.2		86.8		14.3	
1642+15	1648+23	607.2	24.5	26.0	25.3	1703.5	140.5		85.2		13.5	
1648+23	1656+30	807.8	26.0	24.5	25.3	2266.4	187.0		113.3		17.9	
1656+30	1661+32	501.6	24.5	27.5	26.0	1449.1	119.5		72.5		11.1	
1661+32	1667+34	601.9	27.5	26.5	27.0	1805.8	149.0		90.3		13.3	
1667+34	1673+68	633.6	26.5	24.4	25.5	1791.7	147.8		89.6		14.0	
1673+68	1683+87	1019.0	24.4	23.2	23.8	2694.8	222.3		134.7		22.6	
1683+87	1690+99	712.8	23.2	24.6	23.9	1892.9	156.2		94.6		15.8	
1690+99	1695+85	485.8	24.6	26.1	25.4	1368.2	112.9		68.4		10.8	
1695+85	1700+81	496.3	26.1	25.9	26.0	1433.8	118.3		71.7		11.0	
1700+81	1708+10	728.6	25.9	26.4	26.2	2117.1	174.7		105.9		16.2	
1708+10	1719+24	1114.1	26.4	26.0	26.2	3243.2	267.6		162.2		24.7	
1719+24	1723+89	464.6	26.0	25.9	26.0	1339.7	110.5		67.0		10.3	
1723+89	1730+12	623.0	25.9	28.5	27.2	1883.0	155.3		94.1		13.8	
1730+12	1737+30	718.1	28.5	25.4	27.0	2150.3	177.4		107.5		15.9	
1737+30	1744+59	728.6	25.4	28.9	27.2	2198.1	181.3		109.9		16.2	
1744+59	1750+66	607.2	28.9	28.7	28.8	1943.0	160.3		97.2		13.5	
SUBTOTALS							4092.1		2480.1		385.5	

SITE B FULL-WIDTH OVERLAY QUANTITIES	234031.2	19307.6		11701.6		1711.6
SITE B GUARDRAIL TOTALS						
SITE B ROAD APPROACH TOTALS*	0.0	491.7		298.0		
SITE B IRREGULARITIES: 10.0%	N/A	1979.9		1200.0		
<b>SITE A TOTAL</b>	<b>316392.7</b>	<b>27,975</b>		<b>32,434</b>		<b>2,139</b>
<b>SITE B TOTAL</b>	<b>234,032</b>	<b>21,780</b>		<b>13,200</b>		<b>1,712</b>
<b>PROJECT TOTALS</b>	<b>550,425</b>	<b>49,755</b>		<b>45,634</b>		<b>3,851</b>
<b>AS CONSTRUCTED</b>	<b>N/A</b>					

NOTES:

1. ABC CLASS 6 (SHOULDER MATERIAL) QUANTITIES WERE CALCULATED USING 2 - 2' X 2" TRIANGLES.
- \* ROAD APPROACH QUANTITIES CARRIED FROM TABULATION OF ROAD APPROACHES.

Print Date: 3/15/2017		<b>Sheet Revisions</b>			<b>Colorado Department of Transportation</b> <b>Region 2</b>	<b>As Constructed</b>		<b>Tabulation of Resurfacing (Site B)</b>			<b>Project No./Code</b>
File Name: 21254DES_Surf09.dgn		Date:	Comments	Init.		No Revisions:				STA 067A-039	
Horiz. Scale: 1:1      Vert. Scale: As Noted		3/15/2017	Revised Quantities	AWG		Revised:	Designer:	AWG	Structure Numbers	21254	
Unit Information      Unit Leader Initials						Void:	Detailer:		Sheet Subsets: 9 of 9	Sheet Number 17a	

gibberta 5:48:25 AM C:\Projects\21254 - SH 67 Cripple Creek to Westcreek\Design\Drawings\21254DES\_Approach01.dgn

Station	Approach Type	Avg Width	Length	Paving Area	Removal of Asphalt Mat (Planing) (202-00240)		Hot Mix Asphalt (ST) (75) 403-36721		Emulsified Asphalt (Slow Setting) 411-10255		Current Surface	Description	
					LF	LF	SY	SY	As-Const.	Tons			As-Const.
46+35	LT	Business	84.0	0.0	0.0	37.3		0.0		0.0		Paved	Heritage Center - Pave to Existing Joint
46+35	RT	Field Approach	16.0	4.0	7.1	0.0		0.6		0.4		Gravel	0
51+42	RT	County Road	62.5	50.0	347.2	0.0		28.6		17.4		Gravel	Teller County Road 82
83+36	RT	Field Approach	24.0	4.0	10.7	0.0		0.9		0.5		Gravel	0
83+79	LT	County Road	24.0	4.0	10.7	0.0		0.9		0.5		Gravel	Old SH 67 Alignment, NO CR#
85+95	RT	County Road	82.0	0.0	0.0	36.4		0.0		0.0		Paved	TCR 821 - Pave to existing Joint
126+19	RT	Residential	94.0	20.0	208.9	0.0		17.2		10.4		Gravel	Multiple Homes
132+31	RT	Residential	52.0	20.0	115.6	0.0		9.5		5.8		Gravel	Multiple Homes
137+59	LT	Residential	66.0	4.0	29.3	0.0		2.4		1.5		Gravel	0
142+87	LT	Residential	66.0	4.0	29.3	0.0		2.4		1.5		Gravel	0
146+36	LT	Residential	24.0	4.0	10.7	0.0		0.9		0.5		Gravel	0
150+42	RT	Residential	24.0	4.0	10.7	0.0		0.9		0.5		Gravel	0
150+74	LT	Residential	52.0	20.0	115.6	0.0		9.5		5.8		Gravel	Right Fork
153+27	LT	Residential	44.0	4.0	19.6	0.0		1.6		1.0		Gravel	0
155+70	RT	Residential	39.0	4.0	17.3	0.0		1.4		0.9		Gravel	0
159+08	RT	Residential	39.5	39.0	171.2	0.0		14.1		8.6		Gravel	Eaglenest Drive
159+29	LT	Residential	99.0	4.0	44.0	0.0		3.6		2.2		Gravel	0
168+69	LT	Residential	38.5	4.0	17.1	0.0		1.4		0.9		Gravel	0
173+34	RT	Residential	38.5	4.0	17.1	0.0		1.4		0.9		Gravel	0
174+29	LT	Field Approach	24.0	4.0	10.7	0.0		0.9		0.5		Gravel	0
176+66	RT	Business	46.5	20.0	103.3	0.0		8.5		5.2		Gravel	Campground
177+72	LT	Field Approach	24.0	4.0	10.7	0.0		0.9		0.5		Gravel	0
181+84	LT	Residential	66.0	4.0	29.3	0.0		2.4		1.5		Gravel	0
183+74	LT	Residential	41.5	4.0	18.4	0.0		1.5		0.9		Gravel	0
185+11	RT	Residential	39.0	4.0	17.3	0.0		1.4		0.9		Gravel	0
186+85	LT	County Road	150.0	50.0	833.3	0.0		68.8		41.7		Paved	TCR 61 - 50' on tangent and 2 - 50' radii
193+72	RT	Residential	39.0	4.0	17.3	0.0		1.4		0.9		Gravel	0
202+64	RT	Residential	51.5	4.0	22.9	0.0		1.9		1.1		Gravel	0
207+97	RT	Residential	42.0	4.0	18.7	0.0		1.5		0.9		Gravel	0
215+36	RT	Residential	66.0	4.0	29.3	0.0		2.4		1.5		Gravel	0
223+13	RT	Residential	66.0	4.0	29.3	0.0		2.4		1.5		Gravel	0
235+01	LT	Residential	69.0	0.0	0.0	30.7		0.0		0.0		Paved	0
236+54	LT	Field Approach	65.0	0.0	0.0	28.9		0.0		0.0		Paved	0
239+34	RT	County Road	86.0	50.0	477.8	0.0		39.4		23.9		Paved	TCR 64 / 81
244+56	LT	Residential	38.0	4.0	16.9	0.0		1.4		0.8		Paved	0
262+36	LT	Residential	45.5	50.0	252.8	0.0		20.9		12.6		Paved	Teller County Road
276+98	LT	Residential	58.5	20.0	130.0	0.0		10.7		6.5		Gravel	Multiple Homes
288+65	LT	Field Approach	43.0	4.0	19.1	0.0		1.6		1.0		Gravel	0
291+66	RT	Residential	42.5	20.0	94.4	0.0		7.8		4.7		Gravel	Multiple Homes
293+40	LT	Residential	66.0	4.0	29.3	0.0		2.4		1.5		Gravel	0
300+69	LT	County Road	68.0	50.0	377.8	0.0		31.2		18.9		Gravel	Castle Ridge View
301+59	RT	Residential	85.0	20.0	188.9	0.0		15.6		9.4		Gravel	Multiple Homes
303+96	LT	Residential	66.0	4.0	29.3	0.0		2.4		1.5		Gravel	0
319+70	RT	Residential	66.0	4.0	29.3	0.0		2.4		1.5		Gravel	0
333+00	RT	Residential	66.0	20.0	146.7	0.0		12.1		7.3		Gravel	Multiple Residences
336+65	LT	Residential	66.0	20.0	146.7	0.0		12.1		7.3		Gravel	Multiple Residences
402+38	LT	Residential	66.0	4.0	29.3	0.0		2.4		1.5		Gravel	0
423+29	RT	Residential	66.0	0.0	0.0	29.3		0.0		0.0		Concrete	0
425+61	LT	Residential	70.5	20.0	156.7	0.0		12.9		7.8		Gravel	Thousand Pines
433+01	LT	Residential	67.0	4.0	29.8	0.0		2.5		1.5		Gravel	0
439+66	RT	Residential	66.0	4.0	29.3	0.0		2.4		1.5		Gravel	0
Subtotal A						162.7		371.8		225.3			

Print Date: 3/15/2017

File Name: 21254DES\_Approach01.dgn

Horiz. Scale: 1:1

Vert. Scale: As Noted

Unit Information

Unit Leader Initials



**Sheet Revisions**

Date:	Comments	Init.
3/15/2017	Revised Quantities	AWG

Colorado Department of Transportation



Region 2

1480 Quail Lake Loop, Suite A  
 Colorado Springs, CO 80906  
 Phone: 719-227-3231 FAX: 719-227-3298

DLH

**As Constructed**

No Revisions:

Revised:

Void:

**Tabulation of Approaches**

Designer:	AWG	Structure Numbers	
Detailer:			
Sheet Subset:	Approach	Subset Sheets:	1 of 4

**Project No./Code**

STA 067A-039

21254

Sheet Number 18a

gibberta 5:48:31 AM C:\Projects\21254 - SH 67 Cripple Creek to Westcreek\Design\Drawings\21254DES\_Approach02.dgn

Station	Approach Type	Avg Width	Length	Paving Area	Removal of Asphalt Mat (Planing)		Hot Mix Asphalt (ST) (75)		Emulsified Asphalt (Slow Setting)		Current Surface	Description	
					(202-00240)		403-36721		411-10255				
					LF	LF	SY	As-Const.	Tons	As-Const.			Gal.
455+87	LT	Residential	41.5	4.0	18.4	0.0		1.5		0.9		Gravel	0
527+84	RT	County Road	44.5	50.0	247.2	0.0		20.4		12.4		Gravel	Calcite Drive
531+00	LT	County Road	88.5	50.0	491.7	0.0		40.6		24.6		Gravel	Pikes Peak Drive
533+91	LT	Residential	66.0	4.0	29.3	0.0		2.4		1.5		Gravel	0
547+64	LT	County Road	66.0	50.0	366.7	0.0		30.3		18.3		Gravel	Lupine Court
554+55	RT	Residential	66.0	4.0	29.3	0.0		2.4		1.5		Gravel	0
558+56	LT	County Road	74.5	50.0	413.9	0.0		34.1		20.7		Gravel	Horseshoe Drive
562+63	RT	County Road	66.0	4.0	29.3	0.0		2.4		1.5		Gravel	Primrose Lane
563+11	LT	County Road	107.5	50.0	597.2	0.0		49.3		29.9		Gravel	Willow Road
591+67	RT	County Road	66.0	4.0	29.3	0.0		2.4		1.5		Gravel	Hematite Lane
591+83	LT	0	62.0	50.0	344.4	0.0		28.4		17.2		Gravel	Firehouse
598+06	LT	County Road	74.0	50.0	411.1	0.0		33.9		20.6		Gravel	Sportsmans Lane
602+76	RT	County Road	24.0	4.0	10.7	0.0		0.9		0.5		Gravel	Kernite Lane
609+31	RT	Residential	66.0	4.0	29.3	0.0		2.4		1.5		Gravel	0
618+65	RT	Residential	40.0	20.0	88.9	0.0		7.3		4.4		Gravel	Multiple Residences
620+18	RT	Residential	0.0	0.0	0.0	0.0		0.0		0.0		Gravel	Do Not Pave
638+19	LT	County Road	81.0	50.0	450.0	0.0		37.1		22.5		Gravel	Timber Ridge Road
643+73	RT	Residential	43.0	20.0	95.6	0.0		7.9		4.8		Gravel	Multiple Residences
661+26	LT	County Road	143.5	50.0	797.2	0.0		65.8		39.9		Paved	TCR 61 - 265 ft on tangent at 25 ft width
671+19	LT	Residential	66.0	4.0	29.3	0.0		2.4		1.5		Gravel	0
672+01	LT	Residential	66.0	4.0	29.3	0.0		2.4		1.5		Gravel	0
679+48	RT	Residential	22.5	4.0	10.0	0.0		0.8		0.5		Gravel	0
682+33	LT	Residential	45.5	4.0	20.2	0.0		1.7		1.0		Gravel	0
683+33	LT	Field Approach	0.0	0.0	0.0	0.0		0.0		0.0		Gravel	Do Not Pave
698+85	LT	Residential	66.0	4.0	29.3	0.0		2.4		1.5		Gravel	0
712+27	LT	Field Approach	24.0	4.0	10.7	0.0		0.9		0.5		Gravel	0
715+80	RT	County Road	0.0	0.0	0.0	0.0		0.0		0.0		Gravel	Crags Road
718+76	LT	Residential	66.0	4.0	29.3	0.0		2.4		1.5		Gravel	0
730+43	LT	Residential	39.5	4.0	17.6	0.0		1.4		0.9		Gravel	0
737+03	LT	Business	117.0	0.0	0.0	52.0		0.0		0.0		Paved	Meuller State Park
739+40	RT	Business	41.0	20.0	91.1	0.0		7.5		4.6		Gravel	Gravel Pit
748+38	LT	Field Approach	16.0	4.0	7.1	0.0		0.6		0.4		Gravel	0
753+03	LT	Business	66.0	0.0	0.0	29.3		0.0		0.0		Paved	Campground
763+80	RT	Residential	66.0	4.0	29.3	0.0		2.4		1.5		Gravel	0
799+44	RT	Residential	66.0	4.0	29.3	0.0		2.4		1.5		Gravel	0
800+65	LT	Field Approach	24.0	4.0	10.7	0.0		0.9		0.5		Gravel	0
835+50	RT	County Road	80.5	50.0	447.2	0.0		36.9		22.4		Gravel	Divide South Drive
840+83	RT	County Road	47.0	37.0	193.2	0.0		15.9		9.7		Gravel	Cantiberry Road
843+05	LT	Field Approach	24.0	4.0	10.7	0.0		0.9		0.5		Gravel	Meuller State Park - Gate 36
856+41	RT	Residential	66.0	4.0	29.3	0.0		2.4		1.5		Gravel	0
864+65	LT	Residential	66.0	4.0	29.3	0.0		2.4		1.5		Gravel	0
866+02	RT	Field Approach	16.0	4.0	7.1	0.0		0.6		0.4		Gravel	0
873+78	RT	Residential	150.0	0.0	0.0	66.7		0.0		0.0		Paved	Elk Valley Road
875+58	LT	Residential	66.0	4.0	29.3	0.0		2.4		1.5		Gravel	0
881+01	LT	Field Approach	16.0	4.0	7.1	0.0		0.6		0.4		Gravel	0
889+30	LT	Field Approach	24.0	4.0	10.7	0.0		0.9		0.5		Gravel	0
894+85	RT	Field Approach	24.0	4.0	10.7	0.0		0.9		0.5		Gravel	0
918+92	RT	Residential	66.0	4.0	29.3	0.0		2.4		1.5		Gravel	0
926+69	LT	County Road	90.0	0.0	0.0	40.0		0.0		0.0		Gravel	Hybrook Road South
926+69	RT	County Road	75.0	0.0	0.0	33.3		0.0		0.0		Paved	Existing 5'x35' Concrete Ditch Pan
936+45	LT	County Road	85.0	0.0	0.0	37.8		0.0		0.0		Paved	0
936+45	RT	County Road	90.0	0.0	0.0	40.0		0.0		0.0		Paved	0
941+73	LT	Business	48.0	0.0	0.0	21.3		0.0		0.0		Paved	0
Subtotal B						320.4		464.2		281.4			

Print Date: 3/15/2017		<b>Sheet Revisions</b>		
File Name: 21254DES_Approach02.dgn		Date:	Comments	Init.
Horiz. Scale: 1:1      Vert. Scale: As Noted		3/15/2017	Revised Quantities	AWG
Unit Information      Unit Leader Initials				

<b>Colorado Department of Transportation</b>		
	1480 Quail Lake Loop, Suite A Colorado Springs, CO 80906 Phone: 719-227-3231    FAX: 719-227-3298	
<b>Region 2</b>	<b>DLH</b>	

<b>As Constructed</b>	
No Revisions:	
Revised:	
Void:	

<b>Tabulation of Approaches</b>			
Designer:	AWG	Structure Numbers	
Detailer:			
Sheet Subset:	Approach	Subset Sheets:	2 of 4

<b>Project No./Code</b>	
STA 067A-039	
21254	
Sheet Number	19a

gibberta 5:48:37 AM C:\Projects\21254 - SH 67 Cripple Creek to Westcreek\Design\Drawings\21254DES\_Approach04.dgn

Station	Approach Type	Avg Width	Length	Paving Area	Removal of Asphalt Mat (Planing) (202-00240)		Hot Mix Asphalt (ST) (75) 403-36721		Emulsified Asphalt (Slow Setting) 411-10255		Current Surface	Description		
					LF	LF	SY	As-Const.	Tons	As-Const.			Gal.	As-Const.
1001+43	LT	Business	50.0	0.0	0.0	22.2		0.0		0.0		Paved	IREA	
1003+43	RT	Business	62.0	0.0	0.0	27.6		0.0		0.0		Paved	Self Storage	
1005+76	LT	Business	62.5	20.0	138.9	0.0		11.5		6.9		Paved	Diamond Campground & RV Park	
1007+44	RT	City	105.0	0.0	0.0	46.7		0.0		0.0		Paved	Red Feather Lane	
1008+76	LT	Business	40.0	20.0	88.9	88.9		7.3		4.4		Poor Pavement	7th Day Adventist Church	
1021+70	RT	City	99.0	0.0	0.0	44.0		0.0		0.0		Paved	W Kelly Road	
1021+70	LT	City	102.0	0.0	0.0	45.3		0.0		0.0		Paved	Stone Ridge Drive	
1030+15	LT	Field Approach	24.0	4.0	10.7	0.0		0.9		0.5		Gravel	Forest Conservation Access	
1038+97	RT	City	100.0	0.0	0.0	44.4		0.0		0.0		Paved	Valley View Drive	
1045+99	RT	City	98.0	0.0	0.0	43.6		0.0		0.0		Paved	Apache Trail	
1046+20	LT	City	147.0	0.0	0.0	65.3		0.0		0.0		Paved	Research Drive	
1047+52	RT	Residential	41.0	20.0	91.1	0.0		7.5		4.6		Gravel	0	
1050+85	RT	City	47.5	50.0	263.9	263.9		21.8		13.2		Poor Pavement	Sunnywood Lane	
1050+85	LT	City	220.0	0.0	0.0	97.8		0.0		0.0		Paved	Tamarac Parkway	
1055+65	RT	City	62.0	50.0	344.4	344.4		28.4		17.2		Poor Pavement	Lovell Gulch Road	
1073+39	RT	City	165.0	0.0	0.0	73.3		0.0		0.0		Paved	Regent Drive	
1082+26	RT	City	78.0	0.0	0.0	34.7		0.0		0.0		Paved	To Sourdough Road	
1082+26	LT	City	72.0	0.0	0.0	32.0		0.0		0.0		Paved	Shining Mountain Lane	
1100+06	LT	County Road	83.0	0.0	0.0	36.9		0.0		0.0		Paved	Lucky Lady Drive	
1106+66	RT	Business	104.0	0.0	0.0	46.2		0.0		0.0		Paved	Church	
1109+40	LT	Field Approach	16.0	4.0	7.1	0.0		0.6		0.4		Gravel	0	
1116+27	RT	Field Approach	24.0	4.0	10.7	0.0		0.9		0.5		Gravel	0	
1119+70	LT	Field Approach	16.0	4.0	7.1	0.0		0.6		0.4		Gravel	0	
1119+70	RT	Residential	37.0	4.0	16.4	16.4		1.4		0.8		Poor Pavement	0	
1123+29	LT	Business	43.0	50.0	238.9	238.9		19.7		11.9		Poor Pavement	0	
1123+29	RT	County Road	90.0	48.0	480.0	0.0		39.6		24.0		Gravel	Triple B Ranch Road - 40 width + 50 rad	
1125+14	LT	Business	42.5	50.0	236.1	0.0		19.5		11.8		Gravel	0	
1127+78	LT	County Road	43.5	50.0	241.7	0.0		19.9		12.1		Gravel	Water Treatment	
1140+98	LT	Residential	56.0	0.0	0.0	24.9		0.0		0.0		Paved	Zuni Point	
1141+19	RT	Residential	38.0	0.0	0.0	16.9		0.0		0.0		Paved	0	
1147+21	RT	Residential	27.0	20.0	60.0	0.0		5.0		3.0		Gravel	Multiple Residences	
1150+74	RT	Residential	30.0	4.0	13.3	0.0		1.1		0.7		Gravel	0	
1151+06	RT	Residential	38.0	4.0	16.9	0.0		1.4		0.8		Gravel	0	
1159+30	RT	Residential	39.0	4.0	17.3	0.0		1.4		0.9		Gravel	0	
1165+42	RT	Residential	46.0	4.0	20.4	0.0		1.7		1.0		Gravel	0	
1173+50	RT	Forest Service	102.5	37.0	421.4	0.0		34.8		21.1		Gravel	FS 335	
1173+50	LT	Forest Service	45.5	50.0	252.8	252.8		20.9		12.6		Poor Pavement	FS 342	
1176+67	RT	Forest Service	40.0	0.0	0.0	17.8		0.0		0.0		Paved	Paved Pulloff	
650+78	RT	Forest Service	44.0	0.0	0.0	19.6		0.0		0.0		Paved	Paved Pulloff	
1227+94	LT	Forest Service	37.5	50.0	208.3	0.0		17.2		10.4		Gravel	FS 339	
1234+96	LT	Residential	55.0	4.0	24.4	0.0		2.0		1.2		Gravel	0	
1246+42	RT	Residential	42.0	20.0	93.3	0.0		7.7		4.7		Gravel	Multiple Residences	
1257+08	LT	Forest Service	127.0	0.0	0.0	56.4		0.0		0.0		Paved	Quaker Ridge	
1262+52	RT	Forest Service	63.0	0.0	0.0	28.0		0.0		0.0		Paved	Pike Community Group Campground	
1305+50	RT	County Road	36.5	0.0	0.0	16.2		0.0		0.0		Gravel	Sky High Ranch	
1306+87	LT	Field Approach	24.0	4.0	10.7	0.0		0.9		0.5		Gravel	0	
1318+81	RT	Forest Service	90.0	0.0	0.0	40.0		0.0		0.0		Paved	Colorado Campground	
1336+49	LT	County Road	74.0	0.0	0.0	32.9		0.0		0.0		Paved	Painted Rocks Road	
1359+62	RT	Forest Service	70.0	0.0	0.0	31.1		0.0		0.0		Paved	Manitou Lake Campground	
1392+78	RT	County Road	62.5	50.0	347.2	347.2		28.6		17.4		Poor Pavement	Spruce Road / TCR 79	
1407+83	LT	Forest Service	75.0	50.0	416.7	0.0		34.4		20.8		Gravel	FS 391	
Subtotal C					2496.3			336.5		203.9				

Print Date: 3/15/2017

File Name: 21254DES\_Approach04.dgn

Horiz. Scale: 1:1

Vert. Scale: As Noted

Unit Information

Unit Leader Initials



**Sheet Revisions**

Date:	Comments	Init.
3/15/2017	Revised Quantities	AWG

Colorado Department of Transportation



Region 2

1480 Quail Lake Loop, Suite A  
 Colorado Springs, CO 80906  
 Phone: 719-227-3231 FAX: 719-227-3298

DLH

**As Constructed**

No Revisions:

Revised:

Void:

**Tabulation of Approaches**

Designer:	AWG	Structure Numbers	
Detailer:			
Sheet Subset:	Approach	Subset Sheets:	3 of 4

**Project No./Code**

STA 067A-039

21254

Sheet Number 20a

gibberta 5:48:43 AM C:\Projects\21254 - SH 67 Cripple Creek to Westcreek\Design\Drawings\21254DES\_Approach05.dgn

Station	Approach Type	Avg Width	Length	Paving Area	Removal of Asphalt Mat (Planing)		Hot Mix Asphalt (ST) (75)		Emulsified Asphalt (Slow Setting)		Current Surface	Description	
					(202-00240)		403-36721		411-10255				
					LF	LF	SY	As-Const.	Tons	As-Const.			Gal.
1464+75	LT	Field Approach	16.0	4.0	7.1	0.0		0.6		0.4		Gravel	0
1465+59	RT	Field Approach	24.0	4.0	10.7	0.0		0.9		0.5		Gravel	Forest Service Approach
1486+92	RT	Field Approach	16.0	4.0	7.1	0.0		0.6		0.4		Gravel	0
1518+02	LT	Field Approach	24.0	4.0	10.7	0.0		0.9		0.5		Gravel	0
1525+68	RT	County Road	76.0	0.0	0.0	33.8		0.0		0.0		Paved	Douglas County Road 49
1543+36	LT	Field Approach	16.0	4.0	7.1	0.0		0.6		0.4		Gravel	0
1553+19	LT	Field Approach	16.0	4.0	7.1	0.0		0.6		0.4		Gravel / Paved	0
1569+13	RT	Field Approach	16.0	4.0	7.1	0.0		0.6		0.4		Gravel	0
1569+13	LT	Field Approach	16.0	4.0	7.1	0.0		0.6		0.4		Gravel	0
1582+12	LT	Forest Service	75.0	50.0	416.7	0.0		34.4		20.8		Gravel	Shooting range
1592+79	LT	Field Approach	24.0	4.0	10.7	0.0		0.9		0.5		Gravel	0
1604+98	RT	Forest Service	50.5	50.0	280.6	0.0		23.1		14.0		Gravel	0
1642+05	RT	Forest Service	16.0	4.0	7.1	0.0		0.6		0.4		Gravel	Field Approach
1659+74	RT	County Road	88.0	0.0	0.0	39.1		0.0		0.0		Paved	Trout Creek Road / DC 70
1671+14	LT	Residential	195.0	4.0	86.7	0.0		7.2		4.3		Gravel	0
1674+63	RT	Business	37.0	28.0	115.1	0.0		9.5		5.8		Gravel	Westcreek Cemetery
1689+88	LT	Residential	85.0	13.0	122.8	0.0		10.1		6.1		Gravel	Multiple Residences
1719+24	LT	County Road	80.5	50.0	447.2	0.0		36.9		22.4		Paved	Abbey Ave
1736+82	LT	County Road	41.5	50.0	230.6	0.0		19.0		11.5		Paved	Westcreek Road
1739+78	LT	County Road	45.0	20.0	100.0	0.0		8.3		5.0		Paved	Multiple Homes
Subtotal D						72.9		155.2		94.1			
Total						<b>3052.3</b>		<b>1328</b>		<b>805</b>			

1. Paving quantities have been carried forward to tabulation of resurfacing sites a and b.
2. Approach work may be added or removed as determined by the Engineer in the field.
3. Pull-offs shall remain unpaved.
4. Removal of Asphalt (Planing) quantities have been carried forward to Tabulation of Planing.
5. Removal of Asphalt (Planing) quantities were calculated using a 4 foot swath on road approaches

Print Date: 3/15/2017		<b>Sheet Revisions</b>			 <b>Region 2</b>	<b>DLH</b>	<b>As Constructed</b>		<b>Tabulation of Approaches</b>			<b>Project No./Code</b>	
File Name: 21254DES_Approach05.dgn		Date:	Comments	Init.			No Revisions:				STA 067A-039		
Horiz. Scale: 1:1      Vert. Scale: As Noted		3/15/2017	Revised Quantities	AWG			Revised:	Designer:	AWG	Structure Numbers	21254		
Unit Information      Unit Leader Initials							Void:	Sheet Subset:	Approach	Subset Sheets:	1 of 4	Sheet Number	21a

1480 Quail Lake Loop, Suite A  
 Colorado Springs, CO 80906  
 Phone: 719-227-3231 FAX: 719-227-3298



	Begin MP	End MP	Begin Station	End Station	Side	202-01130		202-01300		203-00010		203-00060		210-04035		304-06000		606-00301		606-01370		606-01385		606-01390		606-02003		606-02005			
						Removal of Guardrail Type 3		Removal of End Anchorage		Unclassified Excavation (CIP)		Embankment Material (Complete in CY)		Modify Guardrail (Special) †		AGGREGATE BASE COURSE (CLASS 6)		Guardrail TYPE 3 (6-3 Post Spacing) 31" MGS		Transition TYPE 3G 31" MGS		Transition Type 3J 31" MGS		End Anchorage Type 3K 31" MGS		End Anchorage (Nonflared) 31" MGS		End Anchorage (Flared) 31" MGS			
						LF		EACH		CY	As Const.	Plan	As Const.	Plan	As Const.	Plan	As Const.	Plan	As Const.	Plan	As Const.	Plan	As Const.	Plan	As Const.	Plan	As Const.	Plan	As Const.	Plan	As Const.
						Plan	As Const.	Plan	As Const.																						
	52.299	52.438	1+74	9+08	RT	0.00		0				0		500				0.00		0		0		0		0		0			
	52.499	52.569	12+30	15+99	LT	0.00		0				0		200				0.00		0		0		0		0		0			
	52.639	52.668	19+69	21+22	LT	0.00		0				0		0				0.00		0		0		0		0		0			
	52.709	52.846	23+38	30+62	RT	200.00		1				0		300				200.00		0		0		0		0		1			
	52.928	53.132	34+95	45+72	RT	0.00		0				0		800				0.00		0		0		0		0		0			
	53.075	53.125	42+71	45+35	LT	175.00		1				0		0				175.00		0		0		0		1		0			
	53.135	53.188	45+88	48+68	LT	175.00		1				0		0				175.00		0		0		0		1		0			
	53.156	53.227	46+99	50+73	RT	0.00		0				0		375				0.00		0		0		0		0		0			
	53.223	53.448	50+52	62+40	LT	0.00		0				0		300				0.00		0		0		0		0		0			
	53.566	53.776	68+63	79+72	LT	100.00		1				0		600				100.00		0		0		0		1		0			
	53.880	54.004	85+21	91+76	LT	0.00		0				0		656				0.00		0		0		0		0		0			
	54.451	54.635	115+36	125+08	LT	0.00		0				0		200				0.00		0		0		0		0		0			
	56.599	56.674	228+78	232+74	LT	0.00		0				0		0				0.00		0		0		0		0		0			
	58.113	58.206	308+72	313+63	LT	100.00		1				0		344				100.00		0		0		0		1		0			
	58.239	58.428	315+37	325+35	LT	0.00		0				0		300				0.00		0		0		0		0		0			
(R-1)	58.619	58.814	335+43	345+73	LT	931.25		2				0		0				931.25		0		0		0		0		2			
	58.984	59.836	354+70	399+69	LT	200.00		0				0		2900				200.00		0		0		0		0		0			
(R-1)	60.980	61.195	460+09	471+44	LT	100.00		1				0		400				100.00		0		0		0		1		0			
	60.984	61.049	460+30	463+74	RT	243.75		2				0		0				243.75		0		0		0		2		0			
	61.245	61.456	474+08	485+23	LT	0.00		0				0		200				0.00		0		0		0		0		0			
	61.859	62.150	506+50	521+87	LT	0.00		0				0		400				0.00		0		0		0		0		0			
	62.688	62.822	550+28	557+35	LT	0.00		1				0		200				0.00		0		0		0		0		1			
	63.698	63.785	603+60	608+20	RT	200.00		1				0		200				200.00		0		0		0		0		0			
	63.700	63.818	603+71	609+94	LT	0.00		0				0		200				0.00		0		0		0		0		0			
	64.049	64.294	622+14	635+07	LT	1193.75		2				0		0				1193.75		0		0		0		2		0			
(R-1)	64.380	64.446	639+61	643+10	RT	100.00		1				0		200				100.00		0		0		0		1		0			
			669+64	676+38	RT	0.00		2				90		0				600.00		0		0		0		0		2			
	64.660	64.694	654+40	656+19	RT	100.00		2				0		0				100.00		0		0		0		0		2			
	65.275	65.788	686+87	713+96	RT	2606.25		2				0		0				2606.25		0		0		0		2		0			
	65.885	65.959	719+08	722+98	RT	293.75		2				0		0				293.75		0		0		0		2		0			
	66.036	66.256	727+05	738+67	RT	1087.50		2				0		0				1087.50		0		0		0		0		2			
	66.292	66.493	740+57	751+18	RT	987.50		2				0		0				987.50		0		0		0		0		2			
(R-1)	66.361	66.667	744+21	760+37	LT	0.00		0				0		500				0.00		0		0		0		0		0			
(R-1)	66.387	66.433	745+58	748+01	LT	168.75		2				0		0				168.75		0		0		0		0		2			
	66.436	66.484	748+17	750+70	LT	150.00		2				0		0				150.00		0		0		0		2		0			
	69.917	69.958	931+97	934+13	RT	0.00		0				0		219				0.00		0		0		0		0		0			
	69.970	69.985	934+76	935+56	LT	0.00		0				0		75				0.00		0		0		0		0		0			
	69.985	69.991	935+56	935+87	LT	0.00		0				0		38				0.00		0		0		0		0		0			
	79.389	79.672	1089+76	1104+70	RT	0.00		0				0		800				0.00		0		0		0		0		0			
	79.417	79.447	1091+24	1092+82	LT	0.00		0				0		80				0.00		0		0		0		0		0			
	80.150	80.160	1129+94	1130+47	LT	0.00		0				0		0				0.00		0		0		0		0		0			
	80.150	80.160	1129+94	1130+47	RT	0.00		0				0		0				0.00		0		0		0		0		0			
	82.304	82.314	1243+67	1244+20	LT	0.00		0				0		0				0.00		0		0		0		0		0			
	82.304	82.314	1243+67	1244+20	RT	0.00		0				0		0				0.00		0		0		0		0		0			
	83.797	83.976	1322+50	1331+95	RT	0.00		0				0		75				0.00		0		0		0		0		0			
	83.894	83.976	1327+62	1331+95	LT	0.00		0				0		0				0.00		0		0		0		0		0			
	83.976	83.996	1331+95	1333+01	RT	0.00		0				0		0				0.00		0		0		0		0		0			
	83.976	83.996	1331+95	1333+01	LT	0.00		0				0		0				0.00		0		0		0		0		0			
	83.996	84.038	1333+01	1335+23	RT	0.00		0				0		0				0.00		0		0		0		0		0			
	83.996	84.046	1333+01	1335+65	RT	0.00		0				0		90				0.00		0		0		0		0		0			
	84.046	84.050	1335+65	1335+86	LT	0.00		0				0		0				0.00		0		0		0		0		0			
	90.530	90.686	1678+00	1686+24	LT	0.00		0				0		825				0.00		0		0		0		0		0			
(R-1)	91.015	91.189	1703+61	1712+80	LT	818.75		2				0		0				818.75		0		0		0		2		0			
			Subtotal A			9931.25		33.00		0.00	0.00	90.00		11976.25		0.00	0.00	10531.25		0		0		0		18		14			

Print Date: 3/15/2017  
File Name: 21254DES\_Grail01.dgn  
Horiz. Scale: 1:1 Vert. Scale: As Noted  
Unit Information Unit Leader Initials

Sheet Revisions		
Date:	Comments	Init.
3/15/2017	Revised Quantities	AWG

Colorado Department of Transportation  

1480 Quail Lake Loop, Suite A  
Colorado Springs, CO 80906  
Phone: 719-227-3231 FAX: 719-227-3298  
Region 2 DLH

As Constructed
No Revisions:
Revised:
Void:

Tabulation of Guardrail & Roadside	
Designer: AWG	Structure Numbers
Sheet Subset: GRAIL Subset Sheets: 1 of 2	

Project No./Code	
STA 067A-039	
21254	
Sheet Number	23a

gilberta 548:47 AM C:\Projects\21254 - SH 67 Cripple Creek to Westcreek\Design Drawings\21254DES\_Grail01.dgn

Begin MP	End MP	Begin Station	End Station	Side	202-01130		202-01300		203-00010		203-00060		210-04035		304-06000		606-00301		606-01370		606-01385		606-01390		606-02003		606-02005		
					Removal of Guardrail Type 3		Removal of End Anchorage		Unclassified Excavation (CIP)		Embankment Material Complete in		Modify Guardrail (Special) †		AGGREGATE BASE COURSE (CLASS 6)		Guardrail TYPE 3 (6-3 Post Spacing) 31" MGS		Transition TYPE 3G 31" MGS		Transition Type 3J 31" MGS		Transition Type 3K 31" MGS		End Anchorage (Nonflared) 31" MGS		End Anchorage (Flared) 31" MGS		
					LF		EACH		CY		CY		LF		CY		LF		Each		Each		Each		Each		Each		
					Plan	As Const.	Plan	As Const.	CY	As Const.	Plan	As Const.	Plan	As Const.	Plan	As Const.	Plan	As Const.	Plan	As Const.	Plan	As Const.	Plan	As Const.	Plan	As Const.	Plan	As Const.	Plan
Pull Off																													
(R-1) 63.818	64.017	609+94	620+45	LT	0.00		1		400				0		600.0		1062.50		0		0		0		0		0		1
I-16-AA	APPROACH	LT	0.00		0					45		0				21.75		1		0		0		0		0		1	
	DEPARTURE	LT	0.00		0					45		0				12.50		1		0		0		0		0		1	
64.441	APPROACH	RT	0.00		0					45		0				21.75		1		0		0		0		0		1	
	DEPARTURE	RT	0.00		0					45		0				12.50		1		0		0		0		0		1	
H-16-L	APPROACH	LT	0.00		0					45		0				162.50		1		0		0		0		0		1	
	DEPARTURE	LT	0.00		0					45		0				12.50		1		0		0		0		0		1	
80.145	APPROACH	RT	0.00		0					45		0				162.50		1		0		0		0		0		1	
	DEPARTURE	RT	0.00		0					45		0				12.50		1		0		0		0		0		1	
(R-1) 82.137	APPROACH	LT	0.00		0					45		0				187.50		1		0		0		0		0		1	
	DEPARTURE	LT	0.00		0					45		0				450.00		1		0		0		0		0		1	
82.137	APPROACH	RT	0.00		0					45		0				400.00		1		0		0		0		0		1	
	DEPARTURE	RT	0.00		0					0		0				137.50		1		1		1		0		0		0	
Total					9931		34		400	0	585		11977		600		13187		12		1		1		18		26		

- Note:
1. Unclassified Ex. Shall be for removing any unsuitable subgrade material for the slow-vehicle pull off.
  2. Unclassified Ex. Shall be disposed of off-site at the Contractors Expense or as directed by the Engineer.
  3. All guardrail posts shall be 7 ft., wooden and post holes shall be hammer driven.
  4. Contractor shall re-use metal or wooden curb, if in good condition, in-kind and in-place. If wood or metal curb is not salvageable, Contractor shall replace with new in-kind and in-place materials. This shall be included in the cost of the work.
- † Item is for raising w-beam to next highest bolt hole on steel posts  
 \* Guardrail shall be 10 gauge weathering steel

**Delineator Replacement (Per M Standard 612)**


Begin Station	End Station	Side	202-00090		612-00036	
			Removal of Delineator		Delineator (Flexible) (Square Base)	
			EA		Each	
			Plan	As Const.	Plan	As Const.
2+00	939+89		629		629	
1000+00	1741+35		497		497	
Total			1126		1126	

**Rumble Strip**

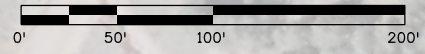
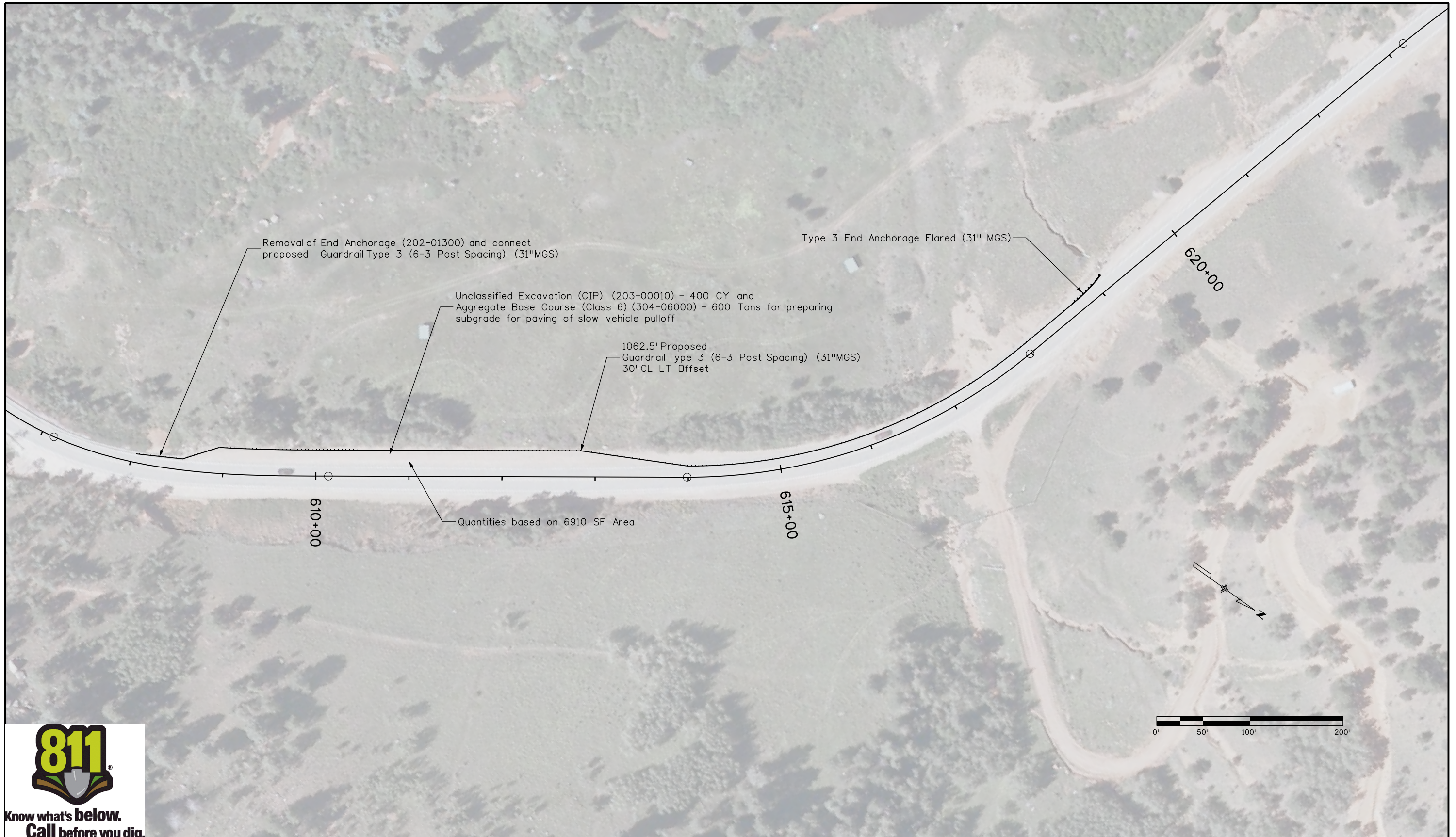
Begin Station	End Station	614-80385							
		Rumble Strip LF							
		Left Travel Lane		Centerline		Right Travel Lane		Total	As Const.
Plan	As Const.	Plan	As Const.	Plan	As Const.				
2+00	939+46	0		74997		0		74997	
1000+00	1750+66	0		60053		0		60053	
1662+50	RT					11.3		11	
1661+50	RT					11.3		11	
1659+50	RT					11.3		11	
Total				135050		34.0		135084	

- Note:
- Replace all type I delineators in place with Delineator (Flexible) (Square Base) (White), which can seasonally extend from 4' to 8' to accommodate snow depth at Tenderfoot Pass
  - Replace all type III delineators in place with Delineator (Flexible) (Square Base) (Yellow), which can seasonally extend from 4' to 8' to accommodate snow depth at Tenderfoot Pass

gilberta 5:46:55 AM C:\Projects\21254 - SH 67 Cripple Creek to Westcreek\Design\Drawings\21254DES\_Grail02.dgn

Print Date: 3/15/2017	 <b>Region 2</b>	<b>Sheet Revisions</b>			<b>Colorado Department of Transportation</b> 1480 Quail Lake Loop, Suite A Colorado Springs, CO 80906 Phone: 719-227-3231 FAX: 719-227-3298 <b>DLH</b>	<b>As Constructed</b>		<b>Tabulation of Guardrail &amp; Roadside</b>			<b>Project No./Code</b>	
File Name: 21254DES_Grail02.dgn		Date:	Comments	Init.		No Revisions:	Designer: AWG Structure Numbers				STA 067A-039	
Horiz. Scale: 1:1 Vert. Scale: As Noted		3/15/2017	Revised Quantities	AWG		Revised:	Detailer:		21254			
Unit Information Unit Leader Initials						Void:	Sheet Subset: GRAIL Subset Sheets: 2 of 2		Sheet Number 24a			

gilberta 5:49:01 AM C:\Projects\21254 - SH 67 Cripple Creek to Westcreek\Design\Drawings\21254DES\_STA\_610\_Guardrail.dgn




**Know what's below.  
Call before you dig.**

Print Date: 3/15/2017	
File Name: 21254DES_STA_610_Guardrail.dgn	
Horiz. Scale: 1:100	Vert. Scale: As Noted
Unit Information	Unit Leader Initials

Sheet Revisions			
Date:	Comments	Init.	
3/15/2017	Rev. Quantities & Notes	AWG	

**Colorado Department of Transportation**



1480 Quail Lake Loop, Suite A  
 Colorado Springs, CO 80906  
 Phone: 719-227-3231 FAX: 719-227-3298

**Region 2** **DLH**

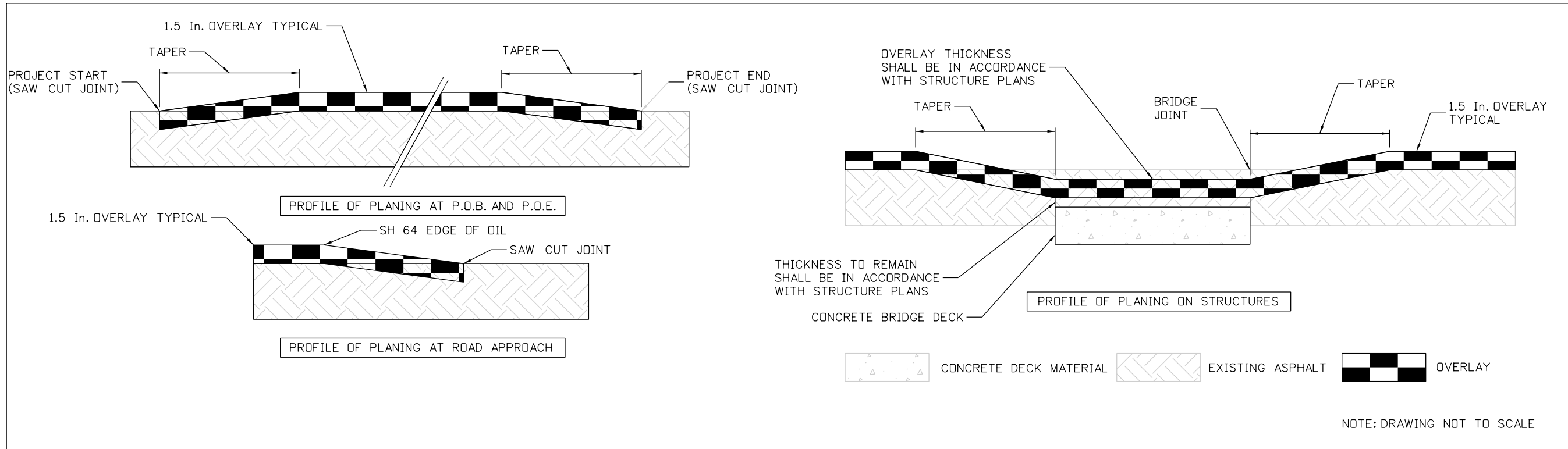
<b>As Constructed</b>
No Revisions:
Revised:
Void:

<b>Guardrail Detail</b>			
Designer:	AWG	Structure Numbers	
Detailer:			
Sheet Subset:		Subset Sheets:	

<b>Project No./Code</b>	
STA 067A-039	
21254	
Sheet Number	25a

LOCATION	TAPER LENGTH	WIDTH OF TAPER	REMOVAL OF ASPHALT MAT (PLANING) (202-00240)		THICKNESS TO BE REMOVED	NOTES
			SY	AS CONSTRUCTED		
MAINLINE	FEET	FEET	SY	AS CONSTRUCTED	IN	
BEGINNING OF SITE A	150	27.8	463.3		1.5 INCHES TO 0 INCHES	BEGINNING OF PROJECT *FOR FULL-WIDTH OVERLAY
STRUCTURE I-16-AA*	N/A	N/A	0.0		N/A	SEE BRIDGE SHEET B2 FOR DETAILS
END OF SITE A	150	45	750.0		0 INCHES TO 1.5 INCHES	END OF PROJECT *FOR FULL-WIDTH OVERLAY
BEGINNING OF SITE B	150	35	583.3		1.5 INCHES TO 0 INCHES	BEGINNING OF PROJECT *FOR FULL-WIDTH OVERLAY
APPROACH H-16-L	300	26	866.7		0 INCHES TO 3 INCHES	
STRUCTURE H-16-L*	N/A	N/A	110.0		3 INCHES AT DECK	SEE BRIDGE SHEET B3 FOR DETAILS
DEPARTURE H-16-L	300	26	866.7		3 INCHES TO 0 INCHES	
APPROACH H-16-M	100	26	288.9		0 INCHES TO 1 INCH	
STRUCTURE H-16-M*	N/A	N/A	133.0		1 INCH AT DECK	SEE BRIDGE SHEET B4 FOR DETAILS
DEPARTURE H-16-L	100	26	288.9		1 INCH TO 0 INCHES	
APPROACH H-16-I	100	40	444.4		0 INCHES TO 1 INCHES	
STRUCTURE H-16-I*	N/A	N/A	403.0		1 INCH AT DECK	SEE BRIDGE SHEET B5 FOR DETAILS
DEPARTURE H-16-I	100	40	444.4		1 INCH TO 0 INCHES	
END OF SITE B	150	28.7	478.3		0 INCHES TO 1.5 INCHES	END OF PROJECT *FOR FULL-WIDTH OVERLAY
Approaches			3052.3			
			9174			

NOTES: \*BRIDGE PLANING QUANTITIES ARE CARRIED FROM BRIDGE SHEET B1 - GENERAL INFORMATION AND SUMMARY OF QUANTITY



Print Date: 3/15/2017		<b>Sheet Revisions</b> Date: 3/15/2017 Comments: ADDED TABULATION Init.: AWG			<b>Colorado Department of Transportation</b>  1480 Quail Lake Loop, Suite A Colorado Springs, CO 80906 Phone: 719-227-3231 FAX: 719-227-3298 <b>Region 2</b>	<b>As Constructed</b> No Revisions: Revised: Void:		<b>TABULATION OF PLANING</b> Designer: AWG Structure Numbers: Detailer: Subset Sheets: 1 of 1 Sheet Subset: RAM			<b>Project No./Code</b> STA 067A-039 21254 Sheet Number 111Aa		
File Name: 21254DES_TabPlaning.dgn		Horiz. Scale: 1:1	Vert. Scale: As Noted	Unit Information		Unit Leader Initials							
DLH													

gilberta 7:39:48 AM C:\Projects\21254 - SH 67 Cripple Creek to Westcreek\Design\Drawings\21254DES\_TabPlaning.dgn