

GENERAL NOTES

THE CONTRACTOR SHALL BE RESPONSIBLE FOR THE STABILITY OF THE STRUCTURE DURING CONSTRUCTION.

ALL LONGITUDINAL AND TRANSVERSE DIMENSIONS ARE MEASURED HORIZONTALLY AND INCLUDE NO CORRECTION FOR GRADE.

UNLESS NOTED OTHERWISE ON THE PLANS, THE PROPOSED OVERLAY SHALL BE PLACED TO THE GRADE AND CROSS SLOPE OF THE EXISTING CONCRETE DECK.

DIMENSIONS CONTAINED IN THESE PLANS ARE CALCULATED FROM THE "AS CONSTRUCTED PLANS". DIMENSIONS MAY BE ADJUSTED TO MEET THE EXISTING STRUCTURE.

THE CONTRACTOR SHALL VERIFY ALL DEPENDENT DIMENSIONS IN THE FIELD BEFORE ORDERING OR FABRICATING ANY MATERIAL.

THE INFORMATION SHOWN ON THESE PLANS CONCERNING THE TYPE AND LOCATION OF UNDERGROUND UTILITIES IS NOT GUARANTEED TO BE ACCURATE OR ALL INCLUSIVE. THE CONTRACTOR IS RESPONSIBLE FOR MAKING THEIR OWN DETERMINATION AS TO THE TYPE AND LOCATION OF UNDERGROUND UTILITIES AS MAY BE NECESSARY TO AVOID DAMAGE THERETO. THE CONTRACTOR SHALL CONTACT THE UTILITIES NOTIFICATION CENTER OF COLORADO AT 811 (1-800-922-1987) AT LEAST 3 DAYS (NOT INCLUDING THE DAY OF NOTIFICATION) PRIOR TO ANY EXCAVATION OR OTHER EARTHWORK.

DESIGN DATA

AASHTO, SEVENTH EDITION LRFD

DESIGN METHOD: LOAD AND RESISTANCE FACTOR DESIGN

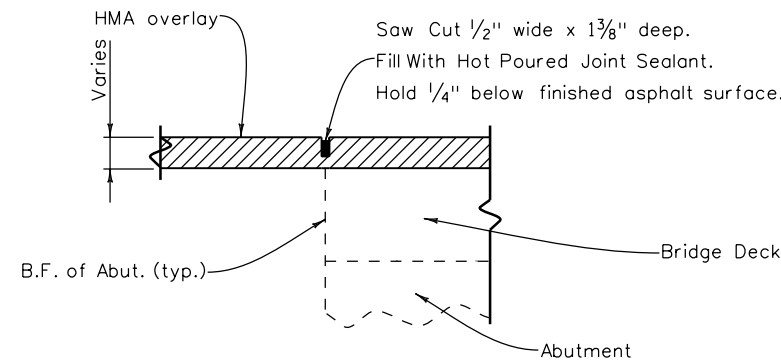
LIVE LOAD: HL-93 DESIGN TRUCK OR TANDEM, AND DESIGN LANE LOAD).
DEAD LOAD: ASSUMES 36 LBS. PER SQ.FT. FOR BRIDGE DECK OVERLAY

INDEX OF DRAWINGS

- DWG. NO. B01 GENERAL INFORMATION & SUMMARY OF QUANTITIES
- DWG. NO. B02 PLAN STR I-16-AA
- DWG. NO. B03 PLAN STR H-16-L
- DWG. NO. B04 PLAN STR H-16-M
- DWG. NO. B05 PLAN STR H-16-I
- DWG. NO. B06 BRIDGE RAIL TYPE 10R (1 OF 2)
- DWG. NO. B07 BRIDGE RAIL TYPE 10R (2 OF 2)

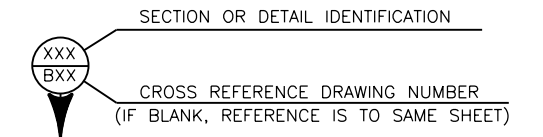
SUMMARY OF QUANTITIES

ITEM NO.	DESCRIPTION	Unit	I-16-AA	H-16-L	H-16-M	H-16-I	TOTAL
202-00240	Removal of Asphalt Mat (Planing)	SY	-	110	133	403	646
202-00425	Removal of Bridge Railing	LF	48	76	92	-	216
403-36721	Hot Mix Asphalt (Grading ST) (75) (PG 58-28)	TON	8	12	15	45	80
518-03000	Sawing and Sealing Bridge Joint	LF	52	55	54	80	241
606-11010	Bridge Rail Type 10R	LF	48	76	92	-	216



SAWCUT AND SEAL DETAIL

Paid for under Item 518 Sawing and Sealing Bridge Joint
Joint at BF of Abutment. Typical Detail for all structures



FOR BURIED UTILITY INFORMATION
THREE (3) BUSINESS DAYS BEFORE YOU DIG
CALL 811
(or 1-800-922-1987)
UTILITY NOTIFICATION CENTER OF COLORADO (UNCC)
www.uncc.org

Design		Detail		Quantities	
INITIAL	DATE	INITIAL	DATE	INITIAL	DATE
Designed By	11-16	JEB	11-16	Quantities By	JEB
Checked By	11-16	JEB	11-16	Checked By	JEB

bjorkquistj 7:48:06 AM c:\proj\projectwise\proj_warkings\1629894\20951_01_General Information.dgn

Print Date: 2/13/2017	0000	Sheet Revisions	 Colorado Department of Transportation 1480 Quail Lake Loop, Suite A Colorado Springs, CO 80906 Phone: 719-227-3231 FAX: 719-227-3298 Region 2	As Constructed	GENERAL INFORMATION & SUMMARY OF QUANTITY		Project No./Code		
File Name: 20951_01_General Information.dgn		Date:		Comments:	Init.:	No Revisions:	Designer: J. Bjorkquist	Structure Numbers: Various	STR 067A - 037 & STA 067A - 039
Horiz. Scale: NTS Vert. Scale: As Noted						Revised:	Detailer: J. Bjorkquist		21254
Staff Bridge Branch - Unit 0226 Unit Leader DDG				Void:	Sheet Subset: Bridge	Subset Sheets: B1 of 7	Sheet Number 105		