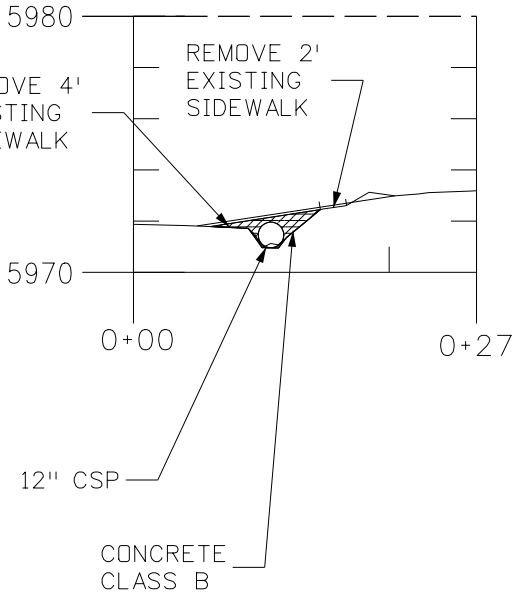
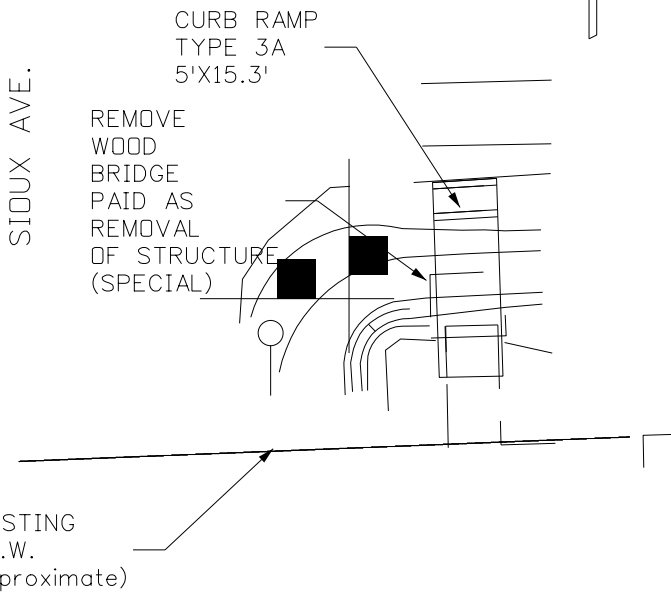


miller.jd 3:26:53 PM C:\Projects\20856 - US 24-El Paso Elbert Co Line East Part 2\Plot_Sets\AD\18 Curb Detail.dgn

SIOUX AVE.
(S.E. Corner)



- REMOVAL OF SIDEWALK - 3 SY
- CONCRETE CURB RAMP - 9 SY
- DETECTABLE WARNINGS - 15 SF
- 12 INCH C.S.P. - 10 LF
- REMOVAL OF STRUCTURE (SPECIAL) - 1 EACH
- CONCRETE CLASS B - 0.5 CY

SEE CROSS HATCH AREA FOR LIMITS OF CONCRETE CLASS B, FOR INCASING C.S.P AND TIE INTO CONCRETE CURB RAMP.

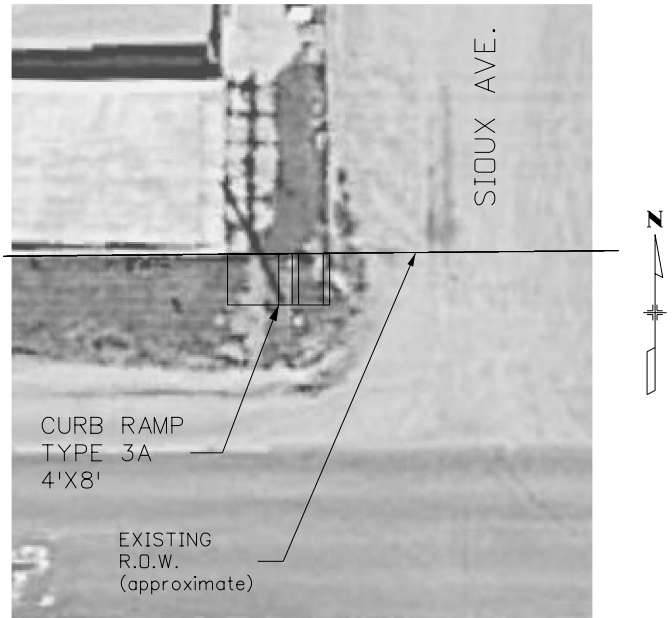
As Constructed

No Revisions:

Revised:

Void:

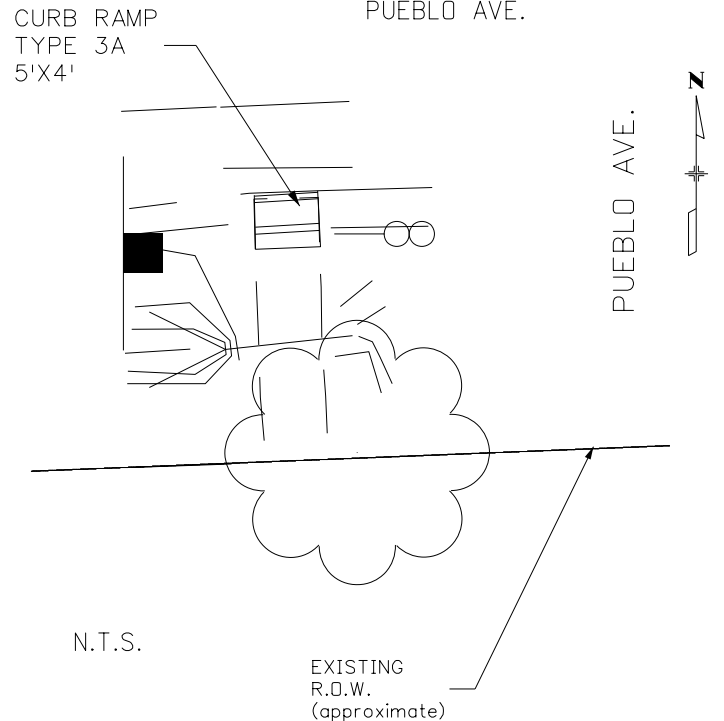
SIOUX AVE.
(N.W. Corner)



CONCRETE CURB RAMP - 4 SY
DETECTABLE WARNINGS - 12 SF

N.T.S.

PUEBLO AVE.



N.T.S.

REMOVAL OF SIDEWALK - 3 SY
CONCRETE CURB RAMP - 3 SY
DETECTABLE WARNINGS - 15 SF

Print Date: 2/7/2017

File Name: 18 Curb Detail.dgn

Horiz. Scale: 1:15

Vert. Scale: As Noted

Unit Information

Unit Leader Initials

CURB RAMP DETAILS

Designer: J.D. Miller

Detailer: J.D. Miller

Sheet Subset: XXXXXXX



Region: 04

Unit Leader: TAM

Sheet: 1 of 1

Project No./Code

STA 0243-087

20856

Sheet Number

18