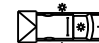
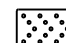





LEGEND

-  MOBILE ATTENUATOR TRUCK, TWO 360-DEGREE YELLOW FLASHING BEACONS, AND YELLOW FLASHING VEHICLE LIGHTS OR STROBES.
-  ADVANCE WARNING FLASHING OR SEQUENCING ARROW PANEL.
-  PORTABLE VARIABLE MESSAGE SIGN (VMS).
-  WHEN THE VMS IS USED, THE "RIGHT LANE CLOSED AHEAD" (W9-3X) SIGN BECOMES OPTIONAL.
-  THE "CONE PICK-UP VEHICLE" OR "WARNING VEHICLE" MAY ENCRDACH INTO THE TRAFFIC LANE WHEN THE SHOULDER IS TOO NARROW TO DRIVE ON.

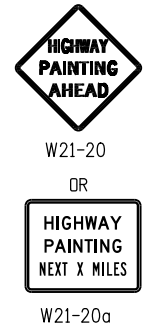
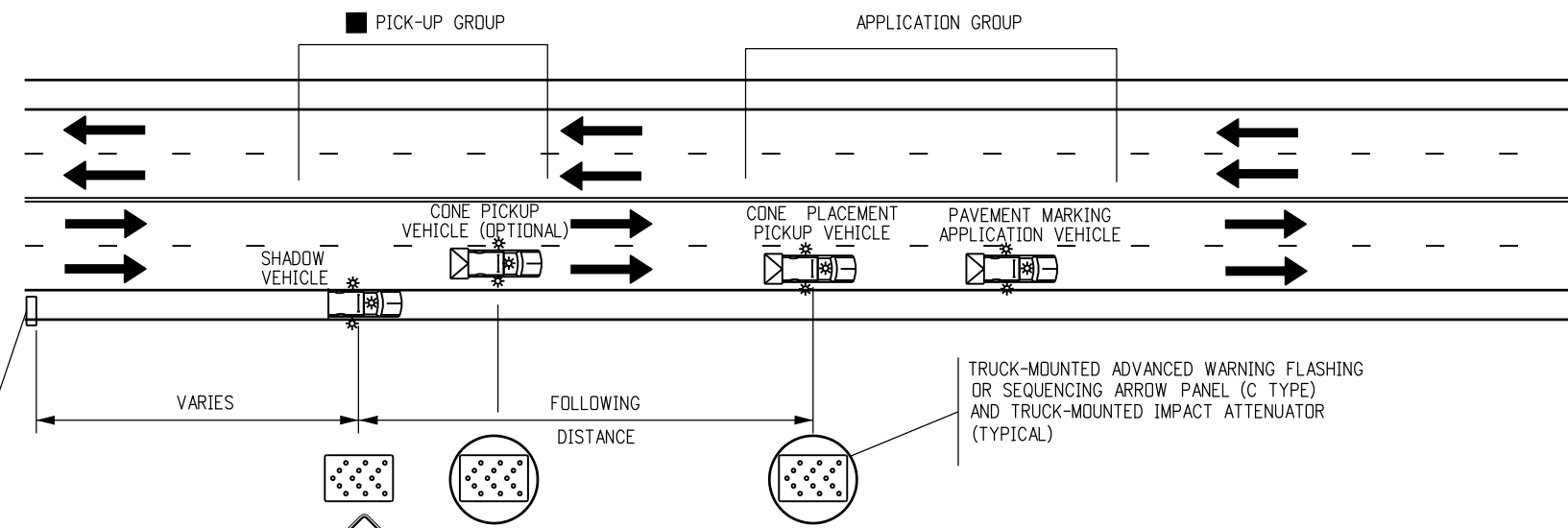
NOTES

1. IN ROADWAY WHERE THE AADT IS 2,000 OR LESS, A SINGLE WORK VEHICLE WITH APPROPRIATE WARNING DEVICES ON THE VEHICLE MAY BE USED.
2. RADIO COMMUNICATIONS BETWEEN THE WORKCREW AND THE MOVING BLOCKADE ARE REQUIRED TO ADJUST THE BLOCKADE TO INCREASE OR DECREASE THE CLOSURE TIME. RELEASE TRAFFIC ONLY AFTER CONFIRMATION THAT ALL WORKERS AND THEIR VEHICLES ARE CLEAR OF THE ROADWAY.
3. IF APPLICABLE, ALL RAMP AND ACCESS BETWEEN THE MOVING BLOCKADE AND WORK OPERATION AREA SHALL BE TEMPORARILY CLOSED USING TRAFFIC CONTROL EQUIPMENT AND PERSONNEL. EACH RAMP MUST REMAIN CLOSED UNTIL THE CREW DOING THE WORK GIVES THE "ALL CLEAR" SIGNAL OR UNTIL THE FRONT OF THE MOVING BLOCKADE PASSES THE CLOSED RAMP(S).

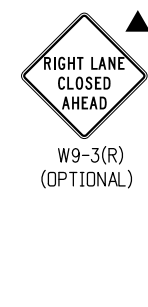
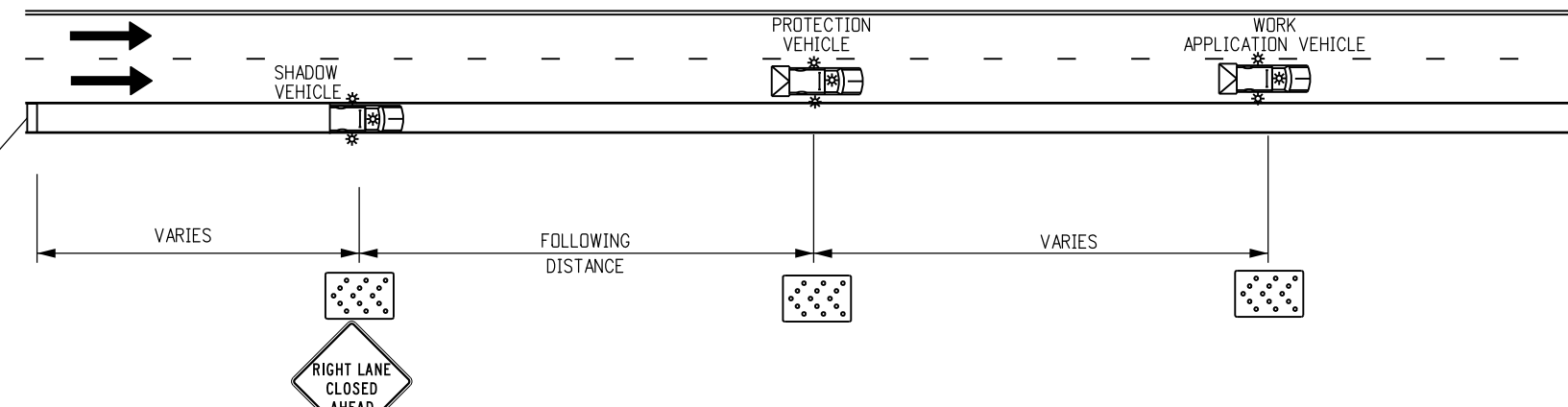
FOLLOWING DISTANCE CHART FOR WARNING VEHICLE AND SIGNING VEHICLES

POSTED WZ SPEED LIMIT (MPH)	FOLLOWING DISTANCE (FEET)
0 - 30	250 - 550
35 - 40	325 - 700
45 - 50	600 - 900
55	750 - 1200
60 - 65	1000 - 1400
70 - 75	1200 - 1600

**CASE NO. 38
TYPICAL APPLICATION
MOBILE STRIPING OPERATION OF LANE CLOSURE OF MULTI-LANE HIGHWAY
(NOT FOR USE ON FREEWAYS)**



**CASE NO. 39
TYPICAL APPLICATION
MOBILE OPERATION OF LANE CLOSURE OF MULTI-LANE HIGHWAY**



Computer File Information

Creation Date: 07/04/12	Initials: KEN
Last Modification Date: 05/17/16	Initials: NNC
Full Path: www.coloradodot.info/library/traffic/traffic-s-standard-plans	
Drawing File Name: S-630-1_23of24.dgn	
CAD Ver.: MicroStation V8 Scale: Not to Scale Units: English	

Sheet Revisions

Date	Comments
12/8/14	FORMERLY SHEET 19.
05/20/16	CHANGED VEHICLE TITLES; CHANGED SIGN TEXT; ADDED W21-20 & W21-21a
06/23/16	UPDATED LEGEND FROM "TRUCK MOUNTED ATTENUATOR" TO "MOBILE ATTENUATOR VEHICLE"

Colorado Department of Transportation
 4201 East Arkansas Avenue
 Denver, Colorado 80222
 Phone: (303) 757-9543
 Fax: (303) 757-9219
Safety & Traffic Engineering Branch **KCM/NNC**

**TRAFFIC CONTROLS
FOR HIGHWAY
CONSTRUCTION**
 Issued By: Safety & Traffic Engineering Branch July 4, 2012

STANDARD PLAN NO.
 S-630-1
 Sheet No. 23 of 24