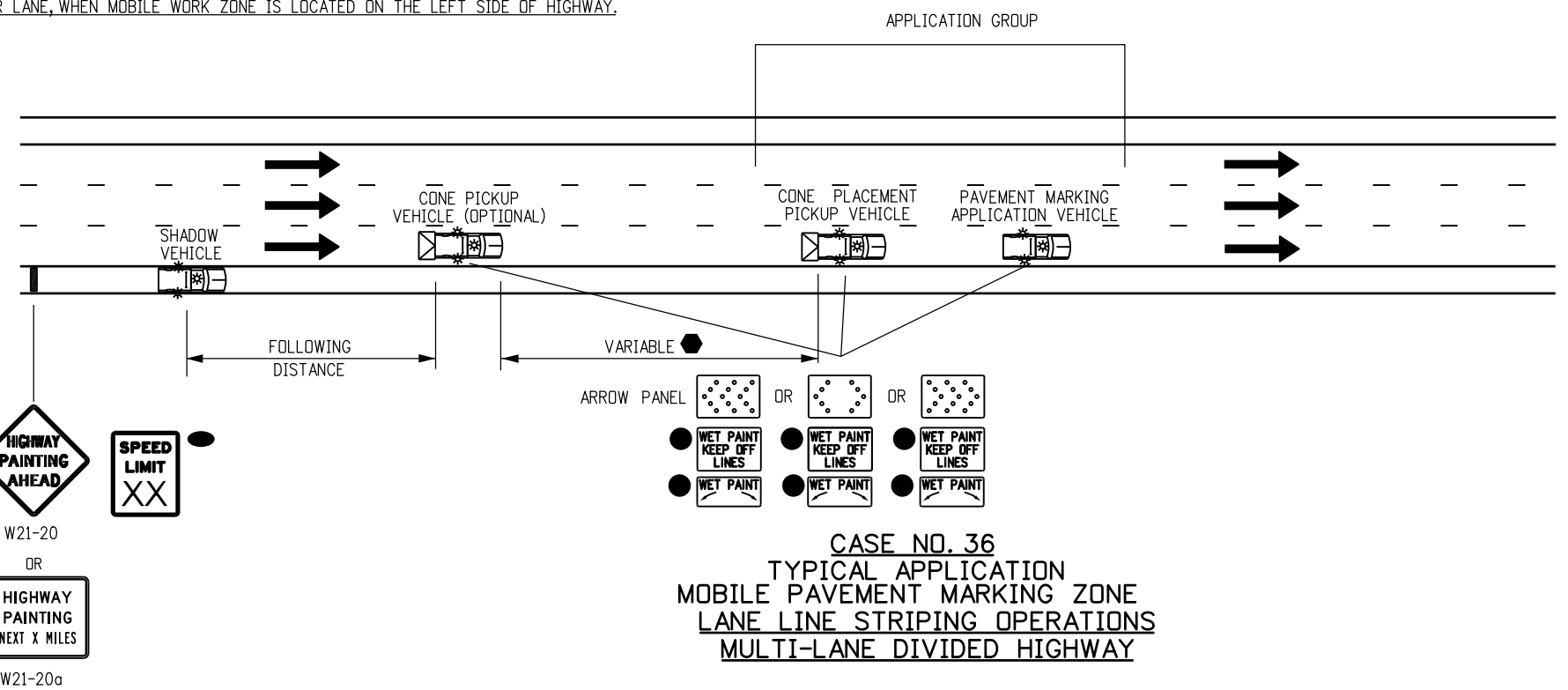


FOR CASE #36, VEHICLE/SIGN SEQUENCE IS THE SAME FOR THE LEFT SIDE OF HIGHWAY, WHILE TAPER IS MIRRORED ABOUT THE CENTER LANE, WHEN MOBILE WORK ZONE IS LOCATED ON THE LEFT SIDE OF HIGHWAY.

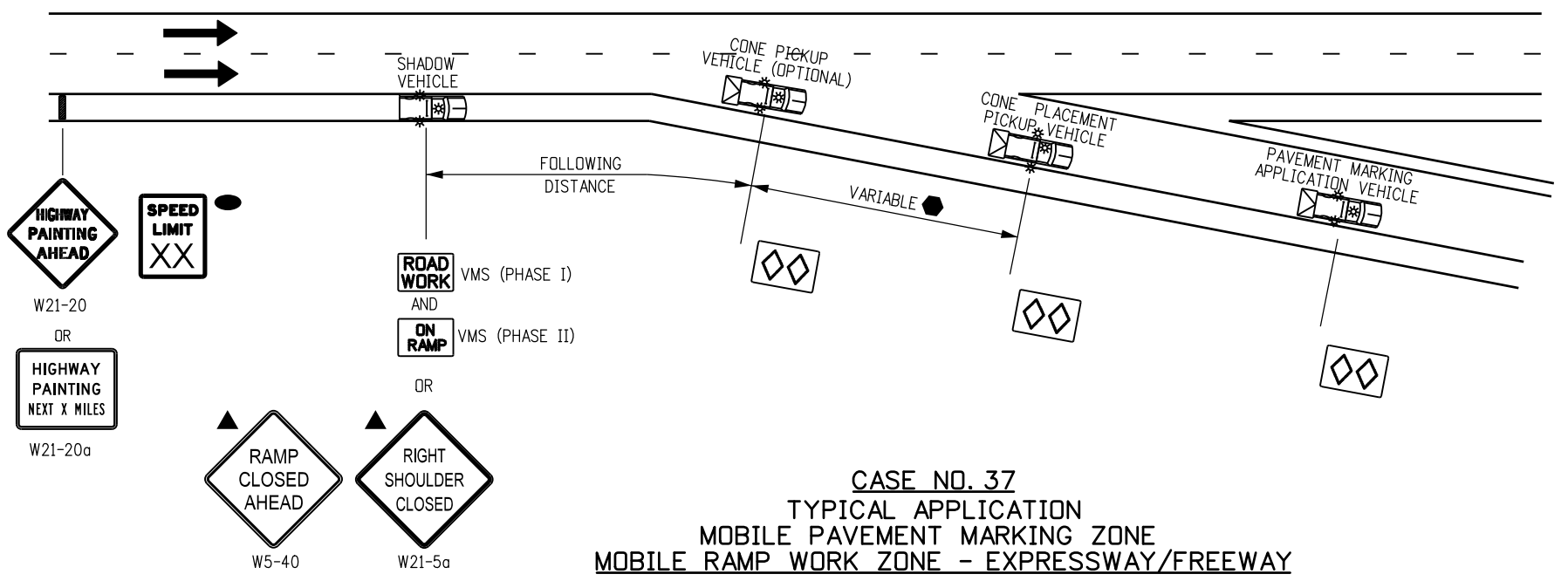
LEGEND

- MOBILE ATTENUATOR VEHICLE, TWO 360-DEGREE YELLOW FLASHING BEACONS, AND YELLOW FLASHING VEHICLE LIGHTS OR STROBES.
- ADVANCE WARNING FLASHING OR SEQUENCING ARROW PANEL.
- PORTABLE VARIABLE MESSAGE SIGN (VMS).
- WHEN THE VMS IS USED, THE "SHOULDER CLOSED" (W21-5aX) OR W21-5bX), AND "RAMP CLOSED AHEAD" SIGNS BECOME OPTIONAL.
- IF TRACKING OF THE WET PAINT IS ANTICIPATED, THE USE OF CONES OR STATIONARY "WET PAINT" SIGNS SHALL BE POSTED.
- THE VARIABLE SEPARATION DISTANCE BETWEEN THE "CONE PLACEMENT VEHICLE" AND "CONE PICKUP VEHICLE" SHALL BE DETERMINED BY THE TRACK DRYING TIME OF THE PAVEMENT MARKING MATERIAL.
- OPTIONAL



FOLLOWING DISTANCE CHART FOR WARNING VEHICLE AND CONE PICKUP VEHICLES

POSTED WZ SPEED LIMIT (MPH)	FOLLOWING DISTANCE (FEET)
0 - 30	250 - 550
35 - 40	325 - 700
45 - 50	600 - 900
55	750 - 1200
60 - 65	1000 - 1400
70 - 75	1200 - 1600



NOTES

1. THE SIGNING VEHICLES MAY ENCRDACH INTO THE TRAFFIC LANE WHEN THE SHOULDER IS TOO NARROW TO DRIVE ON.
2. IF THE RAMP CANNOT BE REOPENED WITHIN 15 MINUTES, USE CASE NO. 22 OF THE S-630-1 STANDARD PLAN.

Computer File Information		Sheet Revisions	Colorado Department of Transportation	TRAFFIC CONTROLS FOR HIGHWAY CONSTRUCTION		STANDARD PLAN NO.
Creation Date: 07/04/12 Initials: KEN		Date: 3/27/14 Comments: REDUCE NUMBER OF TMA VEHICLES, REVISE VMS, AND ADD STATIONARY SIGNS	<p>4201 East Arkansas Avenue Denver, Colorado 80222 Phone: (303) 757-9543 Fax: (303) 757-9219</p> <p>Safety & Traffic Engineering Branch KCM/NNC</p>	<p>Issued By: Safety & Traffic Engineering Branch July 4, 2012</p>		S-630-1
Last Modification Date: 3/16/16 Initials: NNC	3/27/14	FORMERLY SHEET 18.				
Full Path: www.coloradodot.info/library/traffic/traffic-s-standard-plans	12/8/14	SIGN CODE UPDATE: W5-40 & W21-5a.				
Drawing File Name: S-630-1_22of24.dgn	5/20/16	REVISED NOTE 32 TO 36, CHANGE VEHICLE TITLE, REMOVE SIGNS				
CAD Ver.: MicroStation V8 Scale: Not to Scale Units: English	6/23/16	UPDATED LEGEND FROM "TRUCK MOUNTED ATTENUATOR" TO "MOBILE ATTENUATOR VEHICLE"				Sheet No. 22 of 24