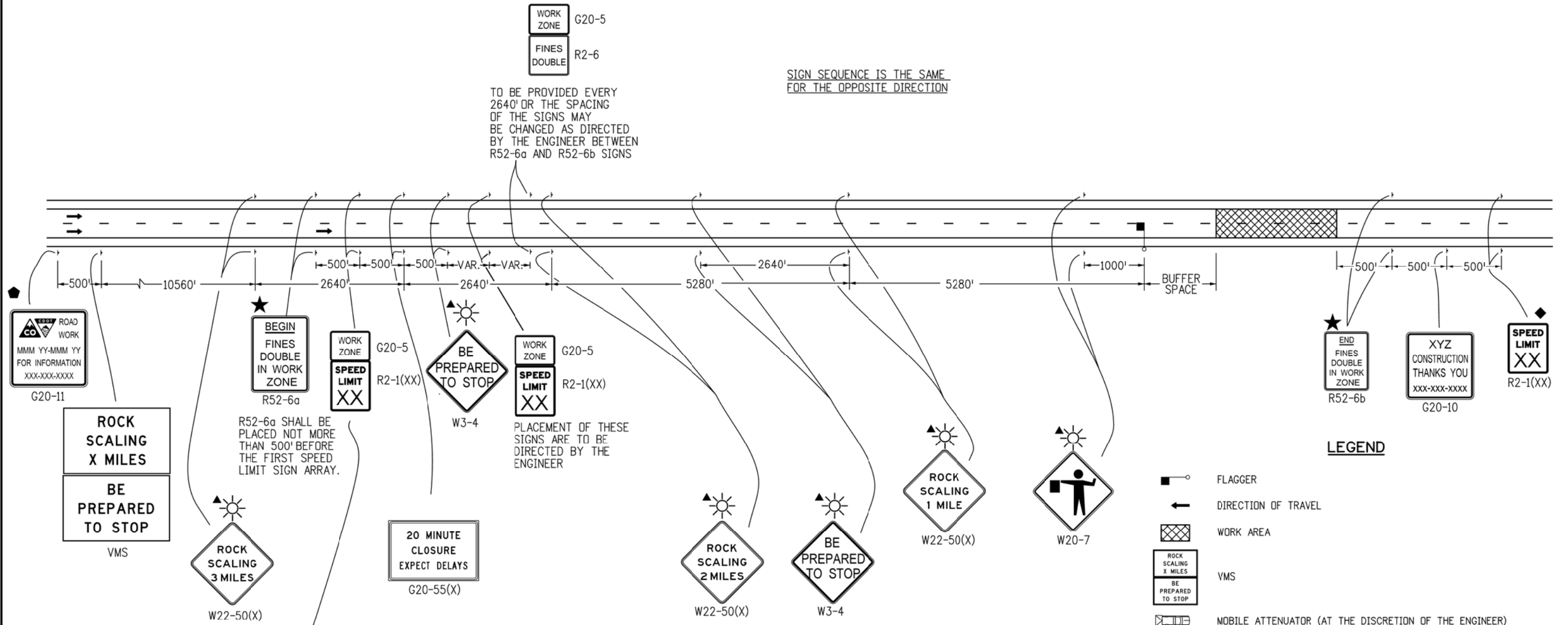


SIGN SEQUENCE IS THE SAME FOR THE OPPOSITE DIRECTION

TO BE PROVIDED EVERY 2640' OR THE SPACING OF THE SIGNS MAY BE CHANGED AS DIRECTED BY THE ENGINEER BETWEEN R52-6a AND R52-6b SIGNS



R52-6a SHALL BE PLACED NOT MORE THAN 500' BEFORE THE FIRST SPEED LIMIT SIGN ARRAY.

PLACEMENT OF THESE SIGNS ARE TO BE DIRECTED BY THE ENGINEER

A STEP-DOWN SPEED LIMIT IS REQUIRED WHEN THERE IS MORE THAN A 15 MPH DIFFERENCE BETWEEN THE NORMAL SPEED LIMIT AND THE CONSTRUCTION ZONE SPEED LIMIT. OTHERWISE THIS G20-5P/R2-1(XX) SIGN ASSEMBLY IS NOT REQUIRED.

**CASE NO. 28**  
**TYPICAL APPLICATION**  
**ROCK SCALING - ROAD CLOSURE, 4-LANE DIVIDED HIGHWAY**

Computer File Information	
Creation Date: 07/04/12	Initials: RRR
Last Modification Date: 07/26/13	Initials: KEN
Full Path: www.coloradodot.info/library/traffic/traffic-s-standard-plans	
Drawing File Name: S-630-01_15of24.dgn	
CAD Ver.: MicroStation V8 Scale: Not to Scale Units: English	

Sheet Revisions	
Date:	Comments
07/26/13	CORRECTED SIGN CODE DESIGNATION FOR FLAGGER (SYMBOL) SIGN TO W20-7

Colorado Department of Transportation  
 4201 East Arkansas Avenue  
 Denver, Colorado 80222  
 Phone: (303) 757-9543  
 Fax: (303) 757-9219

**Safety & Traffic Engineering Branch**      **KCM/KEN**

**TRAFFIC CONTROLS FOR HIGHWAY CONSTRUCTION**

Issued By: Safety & Traffic Engineering Branch July 4, 2012

**STANDARD PLAN NO.**  
**S-630-1**  
**Sheet No. 15 of 24**