

LEGEND

- CHANNELIZING DEVICE: FOR TYPE OF DEVICE TO BE USED, SEE SCHEDULE OF TRAFFIC CONTROL DEVICES INCLUDED IN THE PLANS. DRUMS OR VERTICAL PANELS SHALL BE USED TO DELINEATE THE LANE CLOSURE TAPER.
- TYPE III BARRICADE
- CONCRETE BARRIER (TEMPORARY)
- FLAGGER
- ← DIRECTION OF TRAVEL
- ▨ WORK AREA
- L TRANSITION TAPER LENGTH:
 $L = \text{MINIMUM LENGTH OF TAPER}$
 SPEED 45 MPH OR MORE: $L = S \times W$
 SPEED 40 MPH OR LESS: $L = \frac{WS^2}{60}$
 S = NUMERICAL VALUE OF SPEED LIMIT OR 85 PERCENTILE SPEED
 W = WIDTH OF OFFSET
 SHOULDER TAPER = 1/3 L
- ▭ MOBILE ATTENUATOR
- CZ CLEAR ZONE (SEE GENERAL NOTE 16).
- ☀ FLASHING BEACON
- ▲ THESE DEVICES ARE OPTIONAL. THEIR NEED SHALL BE DETERMINED BY DETOUR DESIGN AND/OR SCOPE OF CONSTRUCTION ACTIVITY, AND ARE REQUIRED WHEN THEY ARE INCLUDED IN THE SCHEDULE OF CONSTRUCTION CONTROL DEVICES.
- VARIES BUFFER SPACE (SEE GENERAL NOTE 21 ON SHEET 1).
- REQUIRED WHEN WORK OCCUPIES THE LOCATION FOR MORE THAN 3 DAYS.
- ★ SEE FINES DOUBLE SIGNING NOTES ON SHEET 12.
- G20-11 SIGN IS REQUIRED WHEN SECTION 626 "PUBLIC INFORMATION SERVICES" PROJECT SPECIAL PROVISION WORKSHEET SPECIFICATION IS REQUIRED WITH PROJECT.

CASE NO. 18
 TYPICAL APPLICATION
 TRAFFIC CONTROL AROUND A WORK AREA
 NEAR AN INTERSECTION, ONE LANE CLOSED

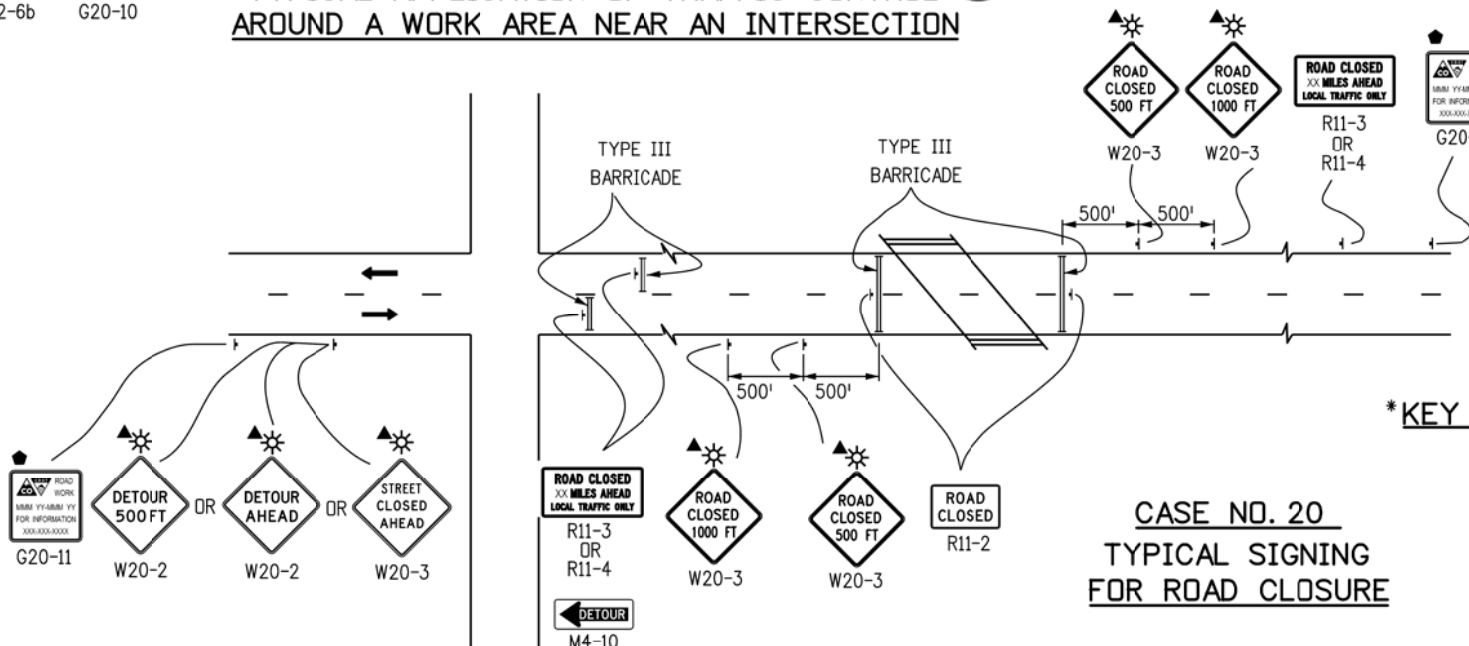
CASE NO. 19
 TYPICAL APPLICATION OF TRAFFIC CONTROL
 AROUND A WORK AREA NEAR AN INTERSECTION

NOTES:

1. SIGN PLACEMENT SHOWN ON CASES 18 AND 19 TYPIFIES RURAL APPLICATIONS. URBAN APPLICATIONS REQUIRE THE SIGNS TO BE PLACED WITHIN ONE, OR PERHAPS TWO, BLOCKS.
2. TRUCK-MOUNTED ATTENUATORS (TMA) OPTIONAL FOR ALL CASES AS DETERMINED BY THE ENGINEER.

***KEY TO ADVANCE SIGNING DISTANCES**

ROAD TYPE	DISTANCE BETWEEN SIGNS		
	A	B	C
URBAN (<= 40 MPH)	100	100	100
URBAN (>= 45 MPH)	350	350	350
RURAL	500	500	500
EXPRESSWAY/FREEWAY	1000	1500	2640



CASE NO. 20
 TYPICAL SIGNING
 FOR ROAD CLOSURE

Computer File Information	
Creation Date: 07/04/12	Initials: RRR
Last Modification Date: 04/02/2015	Initials: TCD
Full Path: www.coloradodot.info/library/traffic/traffic-s-standard-plans	
Drawing File Name: S-630-01_10of24.dgn	
CAD Ver.: MicroStation V8 Scale: Not to Scale Units: English	

Sheet Revisions	
Date:	Comments
07/26/13	CORRECTED SIGN CODE DESIGNATION FOR FLAGGER (SYMBOL) SIGN TO W20-7
04/02/20	CORRECTED SIGN CODE DESIGNATION FOR ROAD WORK AHEAD SIGN TO W20-1

Colorado Department of Transportation
 4201 East Arkansas Avenue
 Denver, Colorado 80222
 Phone: (303) 757-9543
 Fax: (303) 757-9219

Safety & Traffic Engineering Branch **KCM/KEN**

**TRAFFIC CONTROLS
 FOR HIGHWAY
 CONSTRUCTION**

Issued By: Safety & Traffic Engineering Branch July 4, 2012

STANDARD PLAN NO.
 S-630-1
 Sheet No. 10 of 24