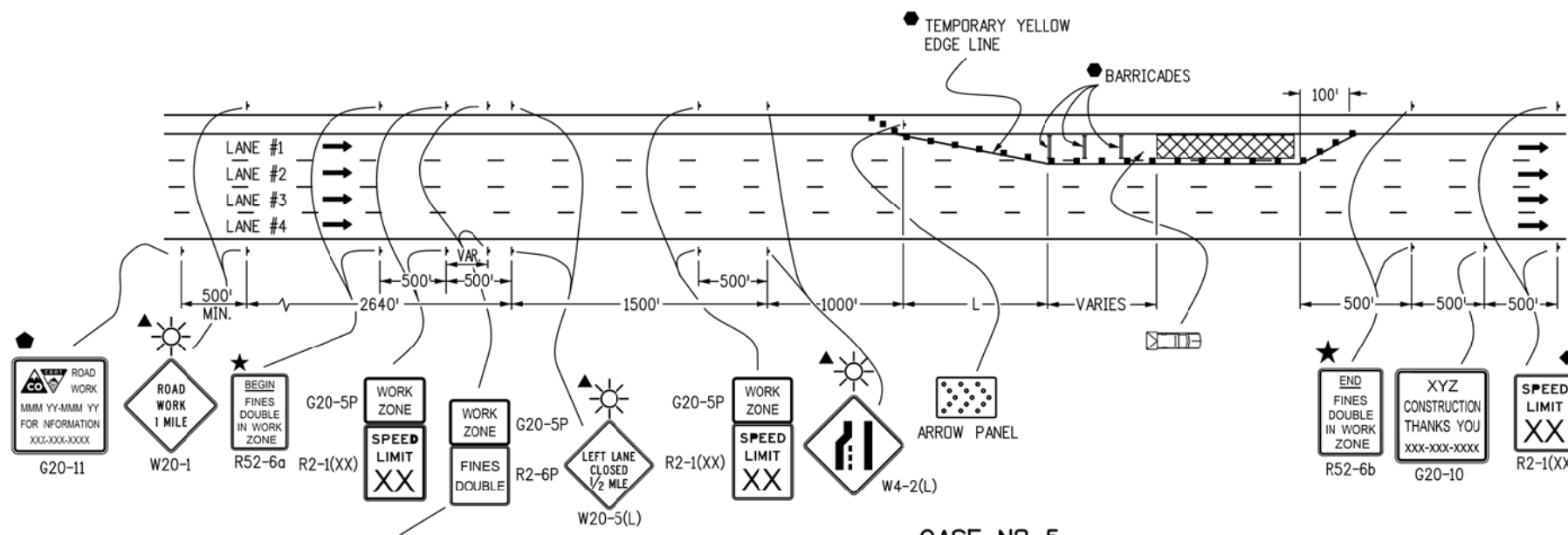


**CASE NO. 4**  
**TYPICAL APPLICATION**  
**ROAD CLOSURE, BYPASS DETOUR PROVIDED**

**LEGEND**

- CHANNELIZING DEVICE: FOR TYPE OF DEVICE TO BE USED, SEE SCHEDULE OF TRAFFIC CONTROL DEVICES INCLUDED IN THE PLANS. DRUMS OR VERTICAL PANELS SHALL BE USED TO DELINEATE THE LANE CLOSURE TAPER.
- TYPE III BARRICADE
- CONCRETE BARRIER (TEMPORARY)
- ▲ FLAGGER
- ← DIRECTION OF TRAVEL
- ▨ WORK AREA
- L TRANSITION TAPER LENGTH:  
 L = MINIMUM LENGTH OF TAPER  
 SPEED 45 MPH OR MORE:  $L = S \times W$   
 SPEED 40 MPH OR LESS:  $L = \frac{WS^2}{60}$   
 S = NUMERICAL VALUE OF SPEED LIMIT OR 85 PERCENTILE SPEED  
 W = WIDTH OF OFFSET  
 SHOULDER TAPER = 1/3 L
- ▨ ADVANCE WARNING FLASHING OR SEQUENCING ARROW PANEL
- CZ CLEAR ZONE (SEE GENERAL NOTE 16 ON SHEET 1).
- ▲ THESE DEVICES ARE OPTIONAL. THEIR NEED SHALL BE DETERMINED BY DETOUR DESIGN AND/OR SCOPE OF CONSTRUCTION ACTIVITY, AND ARE REQUIRED WHEN THEY ARE INCLUDED IN THE SCHEDULE OF CONSTRUCTION CONTROL DEVICES.
- ◆ THESE DEVICES ARE NOT OPTIONAL IF THE POSTED SPEED LIMIT IN THE WORK ZONE IS REDUCED.
- VARIES BUFFER SPACE (SEE GENERAL NOTE 21 ON SHEET 1).
- REQUIRED WHEN WORK OCCUPIES THE LOCATION FOR MORE THAN 3 DAYS.
- ◆ G20-11 SIGN IS REQUIRED WHEN SECTION 626 "PUBLIC INFORMATION SERVICES" PROJECT SPECIAL PROVISION WORKSHEET SPECIFICATION IS REQUIRED WITH PROJECT.
- ▨ MOBILE ATTENUATOR
- ☀ FLASHING BEACON
- ★ SEE FINES DOUBLE SIGNING NOTES ON SHEET 12.



**CASE NO. 5**  
**TYPICAL APPLICATION**  
**LANE #1 CLOSURE, MULTI-LANE FREEWAY**

TO BE PROVIDED EVERY 2640' OR THE SPACING OF THE SIGNS MAY BE CHANGED AS DIRECTED BY THE ENGINEER BETWEEN R52-6a AND R52-6b SIGNS

|  |                     |                        |           |  |  |                          |
|--|---------------------|------------------------|-----------|--|--|--------------------------|
| <b>Computer File Information</b>   |                     | <b>Sheet Revisions</b> |           | <b>Colorado Department of Transportation</b><br><br>4201 East Arkansas Avenue<br>Denver, Colorado 80222<br>Phone: (303) 757-9543<br>Fax: (303) 757-9219<br><b>Safety &amp; Traffic Engineering Branch</b> <b>KCM/KEN</b> | <b>TRAFFIC CONTROLS</b><br><b>FOR HIGHWAY</b><br><b>CONSTRUCTION</b> | <b>STANDARD PLAN NO.</b> |
| Creation Date: 07/04/12  | Initials: RRR       | Date:                  | Comments: |  |  | S-630-1                  |
| Last Modification Date:  | Initials:           |                        |           |  |  |                          |
| Full Path: www.coloradodot.info/library/traffic/traffic-s-standard-plans | (R-X)               |                        |           |  |  |                          |
| Drawing File Name: S-630-01_5of24.dgn                                    | (R-X)               |                        |           |  |  |                          |
| CAD Ver.: MicroStation V8  | Scale: Not to Scale | Units: English         |           |  | Issued By: Safety & Traffic Engineering Branch July 4, 2012          | Sheet No. 5 of 24        |