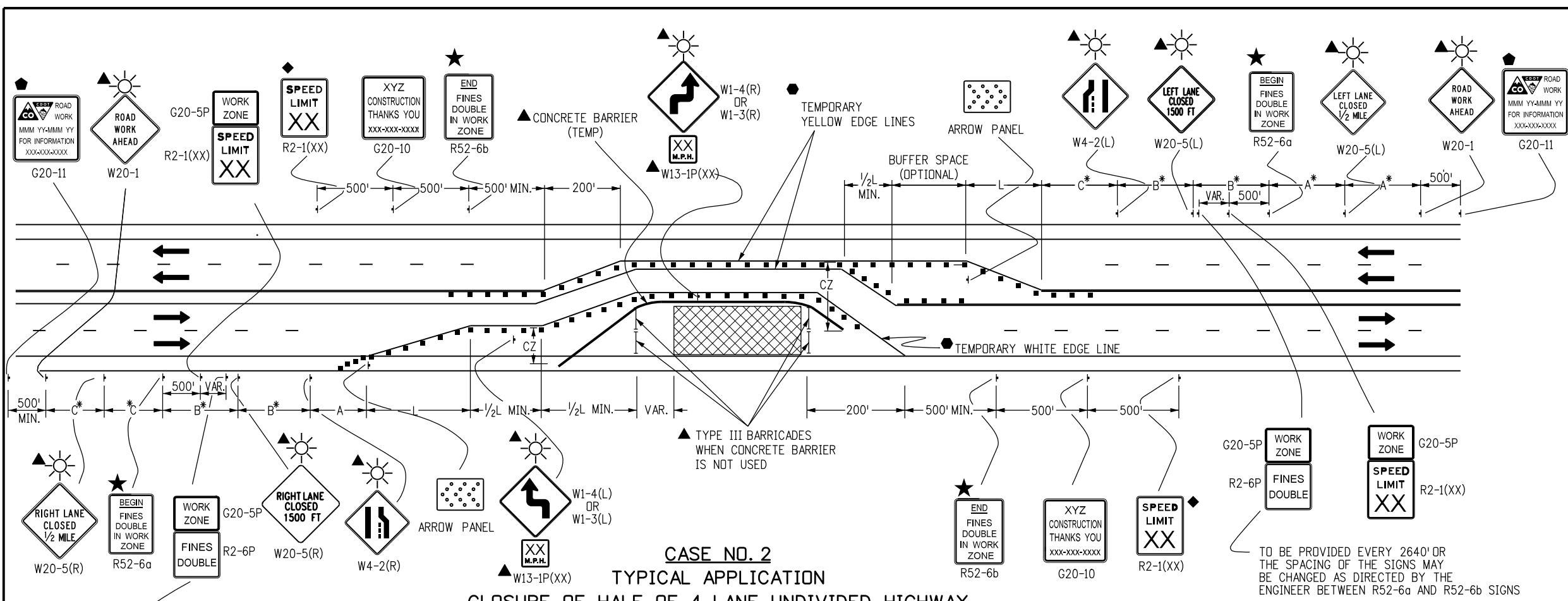
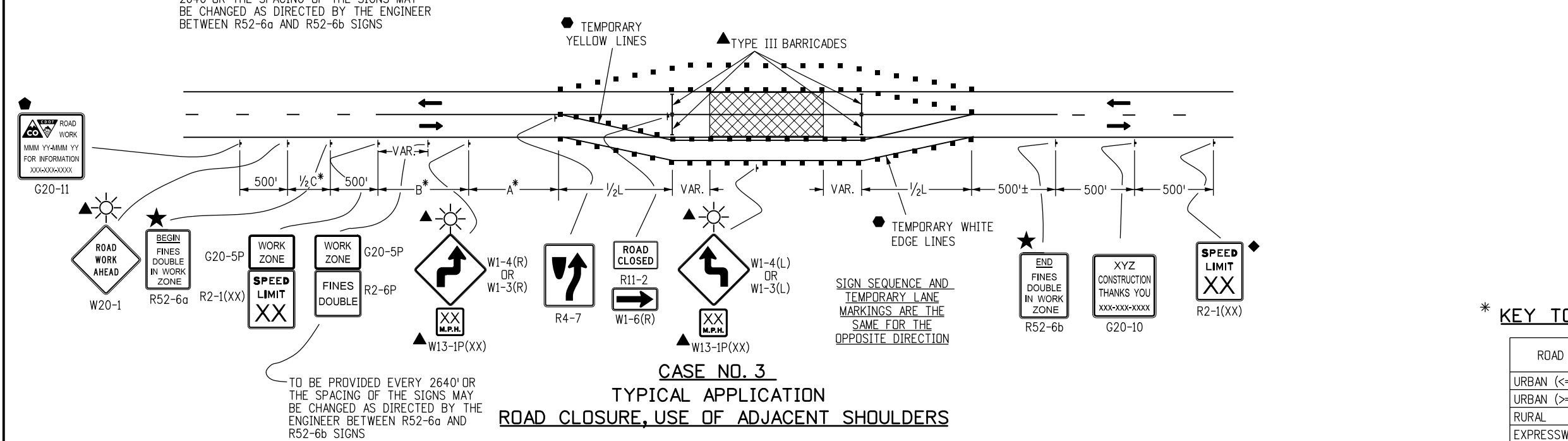


LEGEND

- CHANNELIZING DEVICE: FOR TYPE OF DEVICE TO BE USED, SEE SCHEDULE OF TRAFFIC CONTROL DEVICES INCLUDED IN THE PLANS. DRUMS OR VERTICAL PANELS SHALL BE USED TO DELINEATE THE LANE CLOSURE TAPER.
- TYPE III BARRICADE
- FLAGGER
- ← DIRECTION OF TRAVEL
- ▨ WORK AREA
- L TRANSITION TAPER LENGTH:
 $L = \text{MINIMUM LENGTH OF TAPER}$
 SPEED 45 MPH OR MORE: $L = S \times W$
 SPEED 40 MPH OR LESS: $L = \frac{WS^2}{60}$
 $S = \text{NUMERICAL VALUE OF SPEED LIMIT OR 85 PERCENTILE SPEED}$
 $W = \text{WIDTH OF OFFSET}$
 SHOULDER TAPER = 1/3 L
- ▨ ADVANCE WARNING FLASHING OR SEQUENCING ARROW PANEL.
- A = 100' (URBAN LOW SPEED)
 350' (URBAN HIGH SPEED)
 500' (RURAL)
 1,000' (EXPRESSWAY / FREEWAY)
- CZ CLEAR ZONE (SEE GENERAL NOTE 16 ON SHEET 1)
- ▲ THESE DEVICES ARE OPTIONAL. THEIR NEED SHALL BE DETERMINED BY DETOUR DESIGN AND/OR SCOPE OF CONSTRUCTION ACTIVITY, AND ARE REQUIRED WHEN THEY ARE INCLUDED IN THE SCHEDULE OF CONSTRUCTION CONTROL DEVICES.
- ◆ THESE DEVICES ARE NOT OPTIONAL IF THE POSTED SPEED LIMIT IN THE WORK ZONE IS REDUCED.
- VAR. BUFFER SPACE (SEE GENERAL NOTE 21 ON SHEET 1).
- REQUIRED WHEN WORK OCCUPIES THE LOCATION FOR MORE THAN 3 DAYS.
- ◆ G20-11 SIGN IS REQUIRED WHEN SECTION 626 "PUBLIC INFORMATION SERVICES" PROJECT SPECIAL PROVISION WORKSHEET SPECIFICATION IS REQUIRED WITH PROJECT.
- ☀ FLASHING BEACON
- ★ SEE FINES DOUBLE SIGNING NOTES ON SHEET 12.



CASE NO. 2
TYPICAL APPLICATION
CLOSURE OF HALF OF 4-LANE UNDIVIDED HIGHWAY



CASE NO. 3
TYPICAL APPLICATION
ROAD CLOSURE, USE OF ADJACENT SHOULDERS

*** KEY TO ADVANCE SIGNING DISTANCES**

ROAD TYPE	DISTANCE BETWEEN SIGNS		
	A	B	C
URBAN (<=40 MPH)	100	100	100
URBAN (>=45 MPH)	350	350	350
RURAL	500	500	500
EXPRESSWAY/FREEWAY	1000	1500	2640

Computer File Information

Creation Date: 07/04/12	Initials: RRR
Last Modification Date: 02/27/13	Initials: KEN
Full Path: www.coloradodot.info/library/traffic/traffic-s-standard-d-plans	
Drawing File Name: S-630-01_4of24.dgn	
CAD Ver.: MicroStation V8 Scale: Not to Scale Units: English	

Sheet Revisions

Date:	Comments
02/27/13	UPDATE TAPER TO MUTCD STD

Colorado Department of Transportation
 4201 East Arkansas Avenue
 Denver, Colorado 80222
 Phone: (303) 757-9543
 Fax: (303) 757-9219

Safety & Traffic Engineering Branch **KCM/KEN**

TRAFFIC CONTROLS FOR HIGHWAY CONSTRUCTION

Issued By: Safety & Traffic Engineering Branch July 4, 2012

STANDARD PLAN NO.
S-630-1
Sheet No. 4 of 24