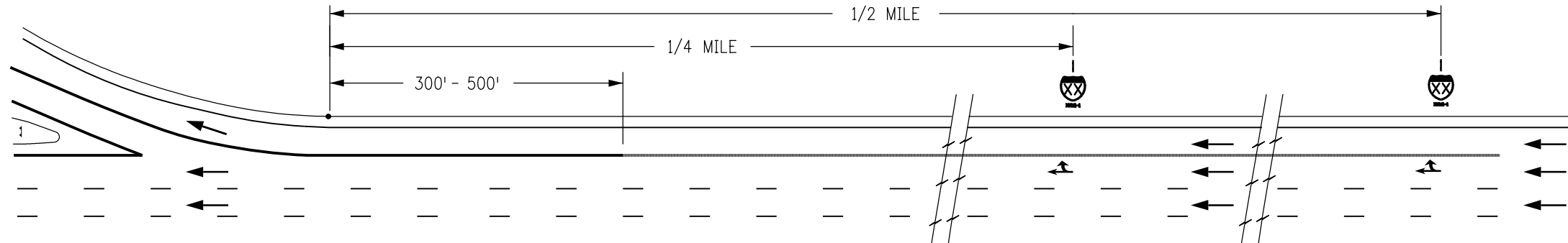
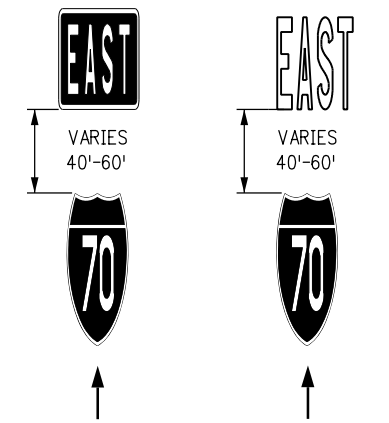


TYPICAL SHIELD PLACEMENT
*AS DIRECTED BY THE ENGINEER



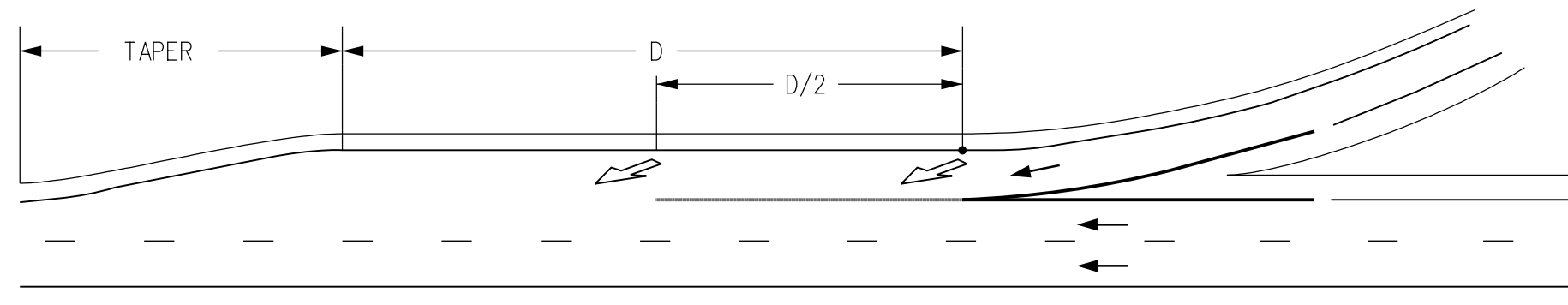
TYPICAL SHIELD & OPTION ARROW PAVEMENT MARKING PLACEMENT
*AS DIRECTED BY THE ENGINEER

SHIELD LAYOUT DETAIL

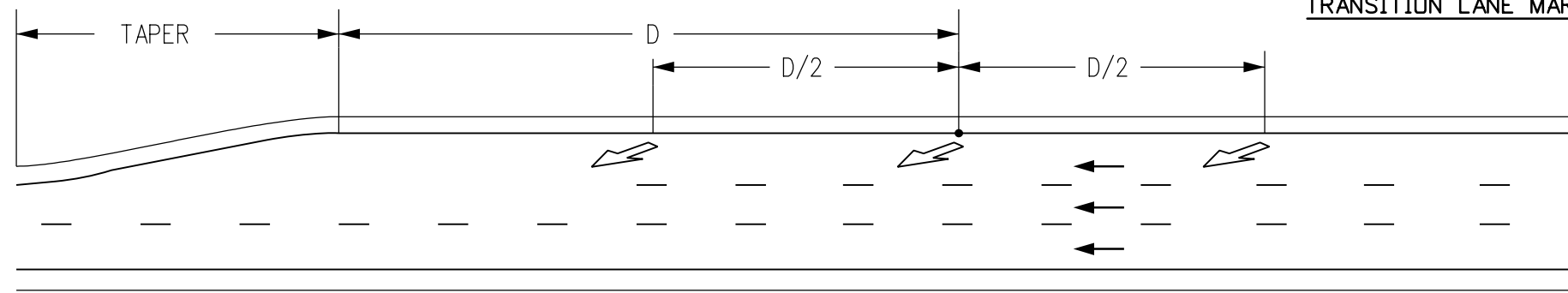


LEGEND

→ Direction of Travel



TRANSITION LANE MARKINGS



THRU LANE DROP MARKINGS


LANE REDUCTION TRANSITION MARKINGS

D = THE DISTANCE FROM THE PAVEMENT WIDTH TRANSITION SIGN (W4-2) TO THE BEGINNING OF THE TRANSITION TAPER

| Computer File Information | |
|--|-----------------|
| Creation Date: 02/08/17 | Initials: MBhat |
| Last Modification Date: | Initials: |
| Full Path: www.coloradodot.info/library/traffic/traffic-s-standard-plans | |
| Drawing File Name: S-627-01.dgn | |
| CAD Ver.: MicroStation V8i Scale: Not to Scale Units: English | |

| Sheet Revisions | |
|-----------------|----------|
| Date: | Comments |
| | |
| | |
| | |
| | |

Colorado Department of Transportation



4201 East Arkansas Avenue
Denver, Colorado 80222
Phone: 303-757-9543 FAX: 303-757-9219

Safety & Traffic Engineering KCM

PAVEMENT MARKINGS

Issued By: Safety & Traffic Engineering Branch July 4, 2012

| STANDARD PLAN NO. |
|-------------------|
| S-627-1 |
| Sheet No. 8 of 8 |