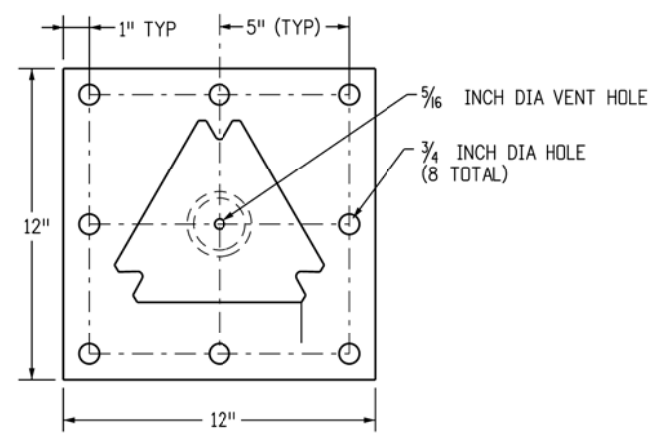
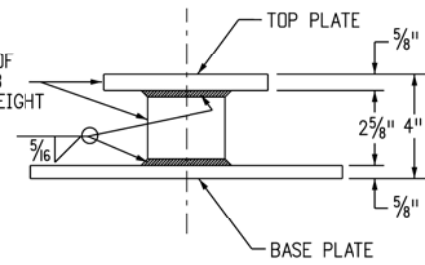


**SLIPBASE CASTING**

**BASE PLATE FABRICATION REQUIREMENTS:**  
 BASE PLATE: 3/4 INCH ASTM A 36 PLATE STEEL  
 PIPE STUB: 3 INCH NOMINAL SCHEDULE 80, ASTM A 500 GR B  
 TOP PLATE: MEET REQUIREMENTS OF STD PLAN NO. S-614-8, SHT 3 OF 6  
 MEET ASTM A 123 GALVANIZING AFTER FABRICATION IS COMPLETED.



SLIPBASE WILL MEET REQUIREMENTS OF STD PLAN NO. S-614-8 SLIPBASE STUB POST DETAIL EXCEPT FOR OVERALL HEIGHT



**BASE PLATE DETAIL**

5/8" x 3/4" SOCKET SET FULL DOG SCREW (ZINC PLATED)

3X 5/8" x 3/4" SOCKET SET CUP SCREW (ZINC PLATED) OR 3X 5/8" x 1" CAP SCREW

**SURFACE MOUNT SLIPBASE TUBULAR STEEL SIGN BASE REQUIREMENTS**

FOR 2-7/8 INCH POSTS (P1 OR P2 POSTS)  
 FOR CONCRETE SURFACES GREATER THAN 7 INCHES THICK  
 FOR CONCRETE SURFACES GREATER THAN 12 INCHES IN WIDTH

**MOUNTING HARDWARE**

- 8 - EACH 5/8" x 5/2" INCH LONG "HILTI KWIK HUS-EZ" SCREW ANCHORS
- 16 - EACH 5/8" INCH FLAT WASHERS
- 8 - EACH 5/8" INCH LOCK WASHERS
- 8 - EACH 5/8" INCH NUTS

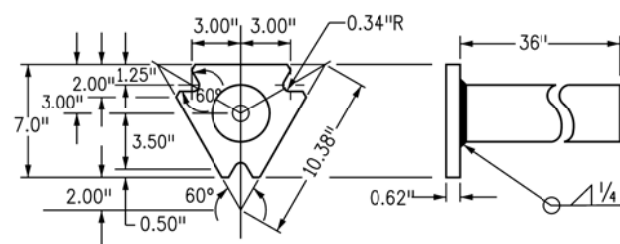
**INSTALLATION REQUIREMENTS:**

DRILL: (8) - 5/8" INCH HOLES 6 INCH DEEP, CLEAN HOLE PRIOR TO INSTALLING ANCHORS  
 USE ADDITIONAL WASHERS FOR SHIMMING TO LEVEL BASE PLATE.

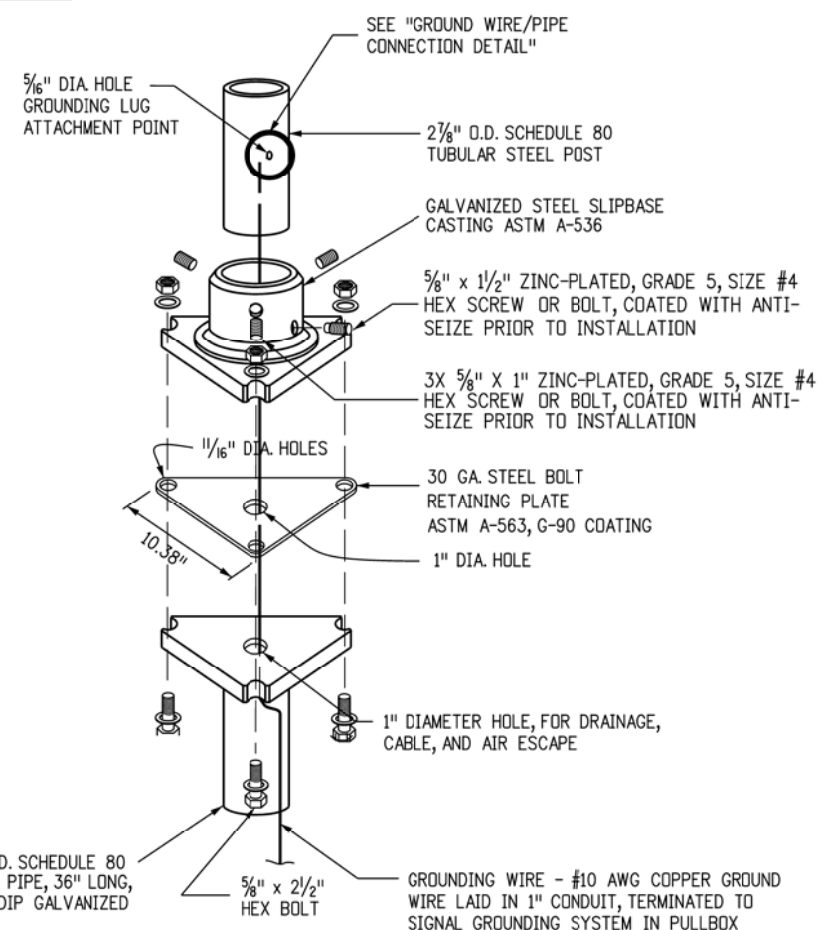
ALL HARDWARE WILL BE GALVANIZED OR ZINC PLATED.

**SURFACE MOUNT SLIPBASE TUBULAR STEEL SIGN BASE NOTES**

1. REFER TO SIGNING PLANS FOR SIGN LOCATIONS AND HEIGHT
2. MINIMUM ALLOWABLE TENSION CAPACITY FOR WEDGE ANCHORS = 3000 LBS.
3. MAXIMUM ALLOWABLE MOMENT FOR SIGN BASE = 5.13 kip-ft.



**SLIPBASE STUB POST**



**TYPICAL SLIPBASE ASSEMBLY**

**CAST-IN-PLACE SLIPBASE INSTALLATION**

**RETRO-FIT SLIPBASE INSTALLATION**

Computer File Information	
Creation Date: 07/04/12	Initials: KEN
Last Modification Date: 01/06/16	Initials: TCD
Full Path: www.coloradodot.info/library/traffic/traffic-s-standard-plans	
Drawing File Name: S-614-09_2of2.dgn	
CAD Ver.: MicroStation V8 Scale: Not to Scale Units: English	

Sheet Revisions	
Date:	Comments
05/24/16	NEW SHEET, INCLUDES SLIP BASE DETAILS PLUS 4" BASE PLATE DETAIL

Colorado Department of Transportation  
 4201 East Arkansas Avenue  
 Denver, Colorado 80222  
 Phone: (303) 757-9543  
 Fax: (303) 757-9219

**Safety & Traffic Engineering Branch**      **KCM/TCD**

**PEDESTRIAN PUSH BUTTON  
 POST ASSEMBLY**

Issued By: Safety & Traffic Engineering Branch July 4, 2012

**STANDARD PLAN NO.**  
 S-614-9  
 Sheet No. 2 of 2