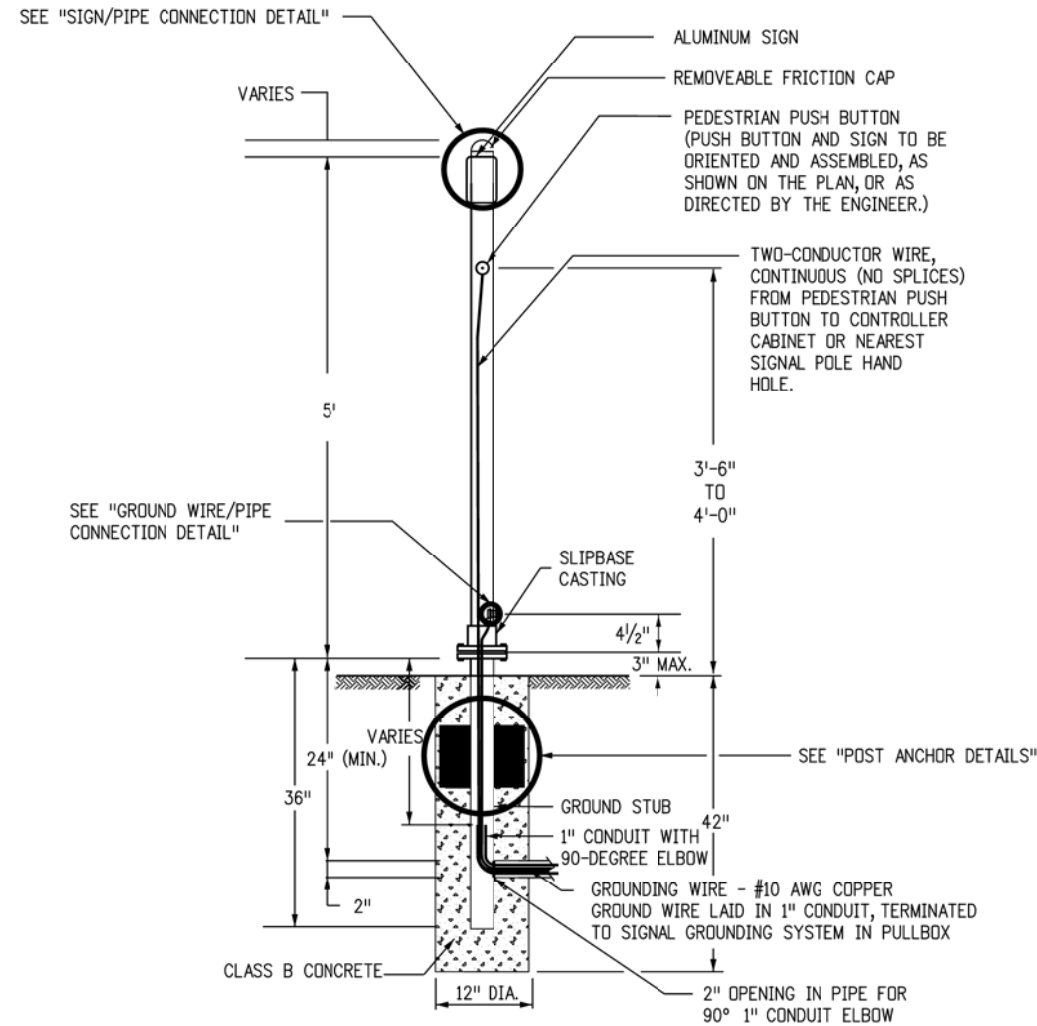
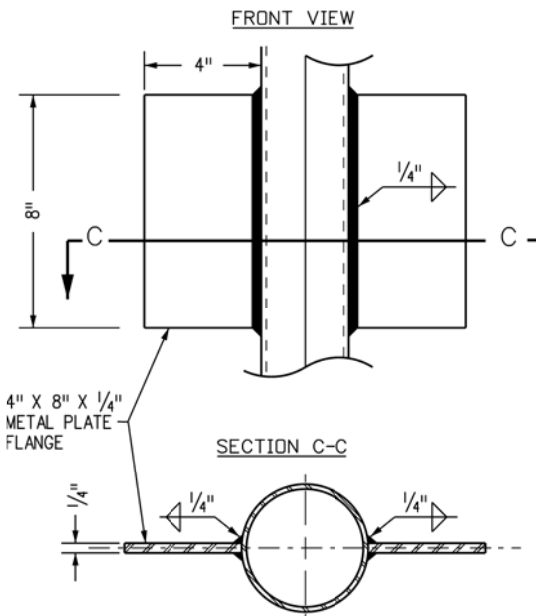
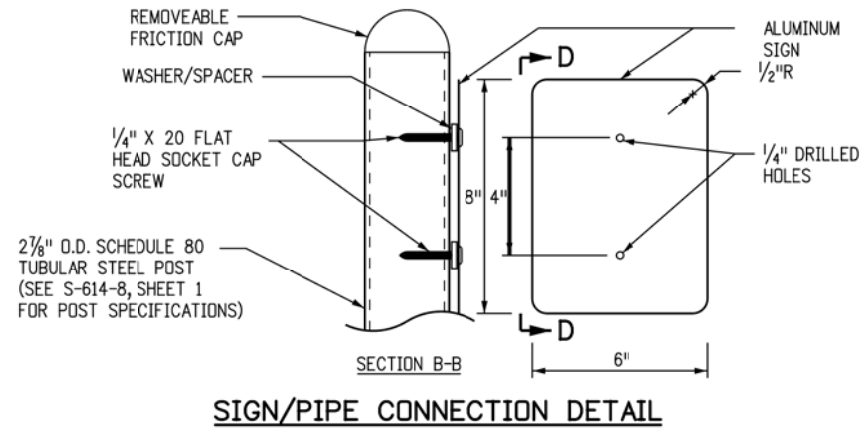


**GENERAL NOTE**

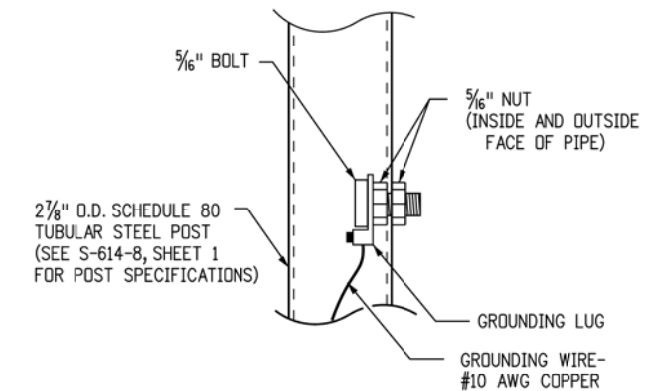
1. THE CONTRACTOR SHALL INSTALL THE POSTS PER THE MANUFACTURER'S RECOMMENDATIONS WITHOUT ADDITIONAL COMPENSATION.
2. ALL POST SHALL BE GALVANIZED AND PAINTED WITH THE COLOR SPECIFIED IN THE PLANS.
3. PUSH BUTTONS SHALL BE ADA COMPLIANT AND MEET THE PROVISIONS FOUND IN "SECTION 4E.08 THROUGH 4E.13 - PEDESTRIAN DETECTORS" IN THE 2009 MUTCD WITH REVISION 1 AND 2.
4. CONCRETE SHALL BE SAW-CUT TO A NEAT LINE. TO PLACE 1" CONDUIT, BACK FILL THE TRENCH WITH FLOW FILL. TOP OF TRENCH SHALL BE CONCRETE CLASS B AT A DEPTH MATCHING SURROUNDING DEPTH OF CONCRETE.



**TUBULAR STEEL POSTS WITH SLIPBASE (SINGLE POST)**



**POST ANCHOR DETAILS**



**GROUND WIRE/PIPE CONNECTION DETAIL**

<b>Computer File Information</b>		<b>Sheet Revisions</b>		<b>Colorado Department of Transportation</b>  4201 East Arkansas Avenue Denver, Colorado 80222 Phone: (303) 757-9543 Fax: (303) 757-9219 <b>Safety &amp; Traffic Engineering Branch</b> <b>KCM/TCD</b>	<b>PEDESTRIAN PUSH BUTTON POST ASSEMBLY</b>	<b>STANDARD PLAN NO.</b>
Creation Date: 07/04/12	Initials: KEN	Date: 05/24/16	Comments: CHANGE IN NOTE 3 TO MEET MUTCD REQUIREMENTS			S-614-9
Last Modification Date: 03/21/16	Initials: NNC					
Full Path: www.coloradodot.info/library/traffic/traffic-s-standard-plans	(R-1)					
Drawing File Name: S-614-09_1of2.dgn	(R-X)					
CAD Ver.: MicroStation V8	Scale: Not to Scale	Units: English			Issued By: Safety & Traffic Engineering Branch July 4, 2012	Sheet No. 1 of 2