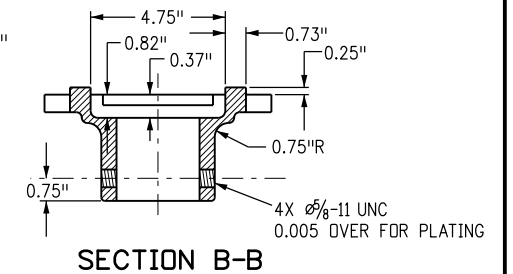
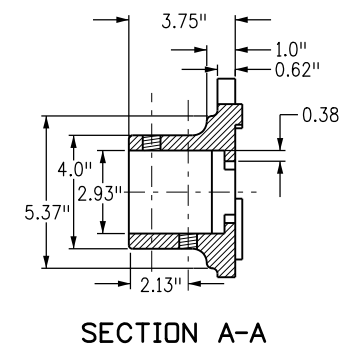
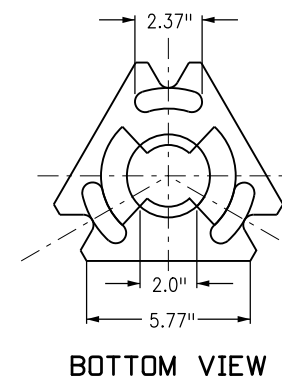
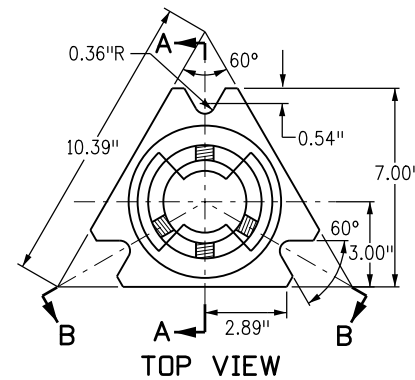


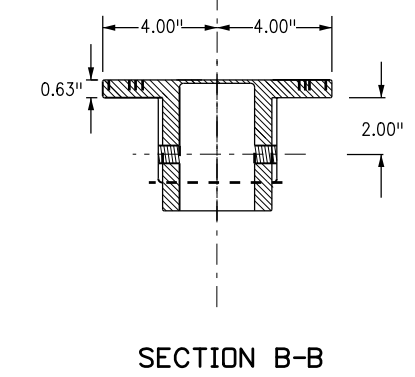
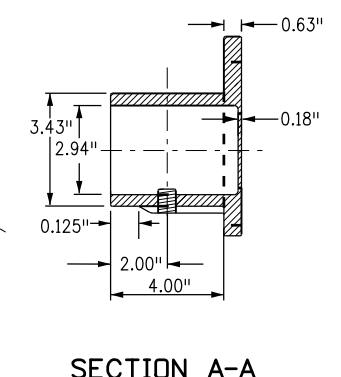
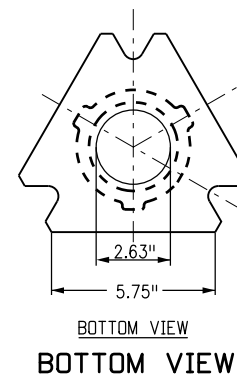
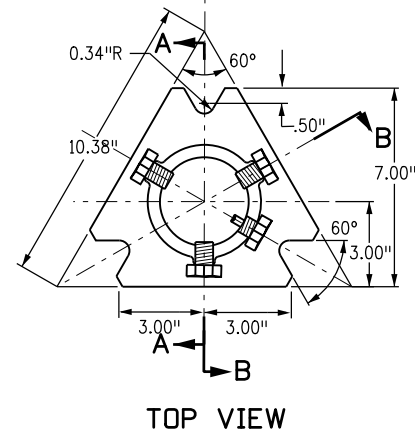
TYPICAL ASSEMBLY

CAST-IN-PLACE SLIPBASE INSTALLATION



SLIPBASE CASTING 1

DIRECTION OF TRAVEL



SLIPBASE CASTING 2

SURFACE MOUNT SLIPBASE TUBULAR STEEL SIGN BASE REQUIREMENTS

FOR 2-7/8 INCH POSTS (P1 OR P2 POSTS)
FOR CONCRETE SURFACES GREATER THAN 7 INCHES THICK
FOR CONCRETE SURFACES GREATER THAN 12 INCHES IN WIDTH

MOUNTING HARDWARE

- 8 - EACH 5/8 x 5/2 INCH LONG "HILTI KWIK HUS-EZ" SCREW ANCHORS
- 16 - EACH 5/8 INCH FLAT WASHERS
- 8 - EACH 5/8 INCH LOCK WASHERS
- 8 - EACH 5/8 INCH NUTS

INSTALLATION REQUIREMENTS:

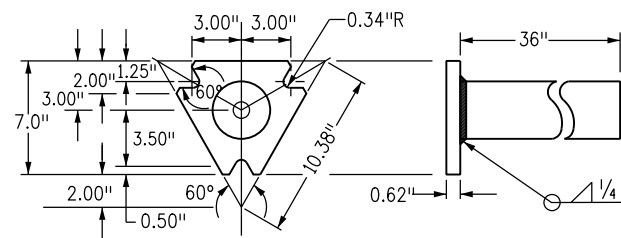
DRILL: (8) - 5/8 INCH HOLES 6 INCH DEEP, CLEAN HOLE PRIOR TO INSTALLING ANCHORS
USE ADDITIONAL WASHERS FOR SHIMMING TO LEVEL BASE PLATE.

ALL HARDWARE WILL BE GALVANIZED OR ZINC PLATED.

SURFACE MOUNT SLIPBASE TUBULAR STEEL SIGN BASE NOTES

1. REFER TO SIGNING PLANS FOR SIGN LOCATIONS AND HEIGHT
2. MINIMUM ALLOWABLE TENSION CAPACITY FOR WEDGE ANCHORS = 3000 LBS.
3. MAXIMUM ALLOWABLE MOMENT FOR SIGN BASE = 5.13 kip-ft.

RETRO-FIT SLIPBASE INSTALLATION



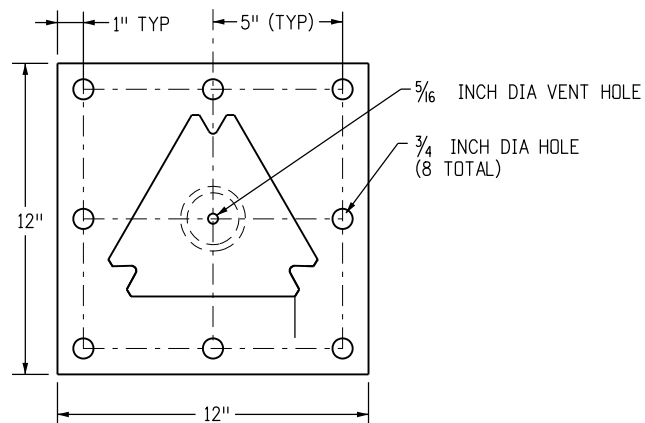
SLIPBASE STUB POST

BASE PLATE FABRICATION REQUIREMENTS:
BASE PLATE: 3/4 INCH ASTM A 36 PLATE STEEL

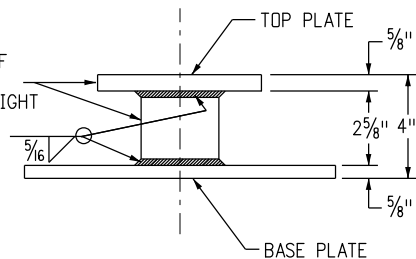
PIPE STUB: 3 INCH NOMINAL SCHEDULE 80, ASTM A 500 GR B

TOP PLATE: MEET REQUIREMENTS OF STD PLAN NO. S-614-8, SHT 2 OF 5

MEET ASTM A 123 GALVANIZING AFTER FABRICATION IS COMPLETED.



SLIPBASE WILL MEET REQUIREMENTS OF STD PLAN NO. S-614-8 SLIPBASE STUB POST DETAIL EXCEPT FOR OVERALL HEIGHT



BASE PLATE DETAIL

Computer File Information

Creation Date: 07/04/12	Initials: KEN
Last Modification Date: 12/01/16	Initials: RPR
Full Path: www.coloradodot.info/library/traffic/traffic-s-standard-plans	
Drawing File Name: S-614-08.dgn	
CAD Ver.: MicroStation V8i Scale: Not to Scale Units: English	

Sheet Revisions

Date:	Comments
10/23/14	NEW SHEET. INCLUDES SLIP BASE DETAILS PLUS 4" BASE PLATE DETAIL
04/01/16	UPDATES TO RETRO-FIT HARDWARE
12/01/16	ADDED DETAILS FOR SLIPBASE 2

Colorado Department of Transportation

4201 East Arkansas Avenue
Denver, Colorado 80222
Phone: 303-757-9543 FAX: 303-757-9219

Safety & Traffic Engineering KCM

TUBULAR STEEL SIGN SUPPORT DETAILS

Issued By: Safety & Traffic Engineering Branch July 4, 2012

STANDARD PLAN NO.

S-614-8

Sheet No. 3 of 6