

**TUBULAR STEEL POST
(WITH SLIPBASE)
(FOR USE WITH ALL P1 AND
P2 POST INSTALLATIONS)
(SEE SHEET 1 FOR P-POST INSTALLATIONS)**

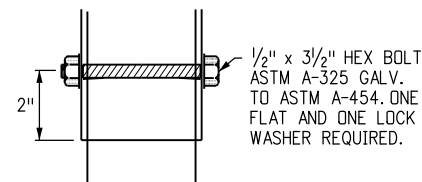
GENERAL NOTE

THE CONTRACTOR SHALL INSTALL THE POSTS PER THE MANUFACTURER'S RECOMMENDATIONS WITHOUT ADDITIONAL COMPENSATION.

DIMENSIONS FOR MOUNTING CLAMP (ALL DIMENSION ARE IN INCHES)

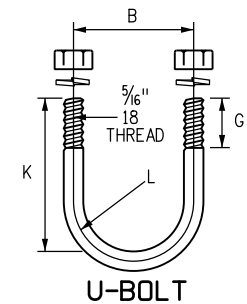
STANDARD PIPE SIZE	A	B	C	D	E	F	G	K	L	R ₁	R ₂
2	3 3/4	2 3/4	1 1/2	1 1/8	1/2	3/16	1	2 1/16	1 1/32	1/4	1 3/16
2 1/2	4 1/4	3 1/4	2	1 1/4	1/2	1/4	1	3 3/16	1 5/32	1/2	1 7/16

T AND U BRACKET ATTACHMENT



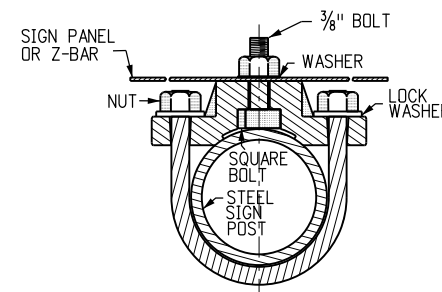
PIPE CLAMP CASTING

PIPE CLAMP CASTING SHALL BE ASTM B26 OR B108 ALUMINUM ALLOY A444.0-T4 OR 356.0-F. ALL SIGN MOUNTING CLAMP PARTS NOT MADE FROM ALUMINUM SHALL BE GALVANIZED STEEL IN CONFORMANCE WITH ASTM A153 OR STAINLESS STEEL.

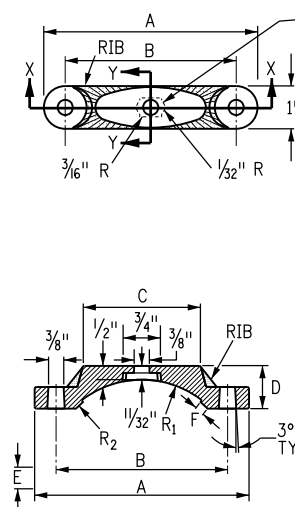
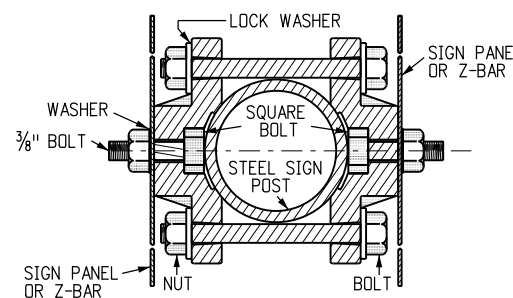


U-BOLT TO BE MADE IN ACCORDANCE WITH STANDARD MANUFACTURING PROCEDURE. 1/4" OR 5/18" DIAMETER STOCK IS PERMISSIBLE. AMERICAN STANDARD REGULAR SEMI-FINISHED HEX NUTS AND SPRING LOCKWASHERS.

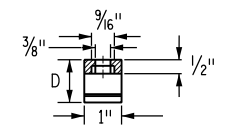
TYPICAL SINGLE BRACKET



TYPICAL BACK TO BACK



SECTION X-X



SECTION Y-Y

SLOT TO HOLD HEAD OF 3/8" HEX HEAD BOLT. THE BOLT SHALL BE 1/4" LONG, WITH FULL THREADS, A MEDIUM WASHER, AND GALVANIZED STEEL OR ALUMINUM SELF-LOCKING HEX HEAD NUT. THE BOLT HEAD MUST NOT TURN IN THE SLOT.

DETAILS FOR SIGN PANEL ATTACHMENT

MOUNTING CLAMP FOR SOCKET OR SLIPBASE

Computer File Information	
Creation Date: 07/04/12	Initials: SCL
Last Modification Date: 10/23/14	Initials: KEN
Full Path: www.coloradodot.info/library/traffic/traffic-s-standard-plans	
Drawing File Name: S-614-08.dgn	
CAD Ver.: MicroStation V8i Scale: Not to Scale Units: English	

Sheet Revisions	
Date:	Comments
03/05/13	UPDATED DETAIL TITLES
10/23/14	MOVED SLIPBASE DETAILS TO SHEET 3

Colorado Department of Transportation

4201 East Arkansas Avenue
Denver, Colorado 80222
Phone: 303-757-9543 FAX: 303-757-9219

Safety & Traffic Engineering KCM

**TUBULAR STEEL SIGN
SUPPORT DETAILS**

Issued By: Safety & Traffic Engineering Branch July 4, 2012

STANDARD PLAN NO.

S-614-8

Sheet No. 2 of 6