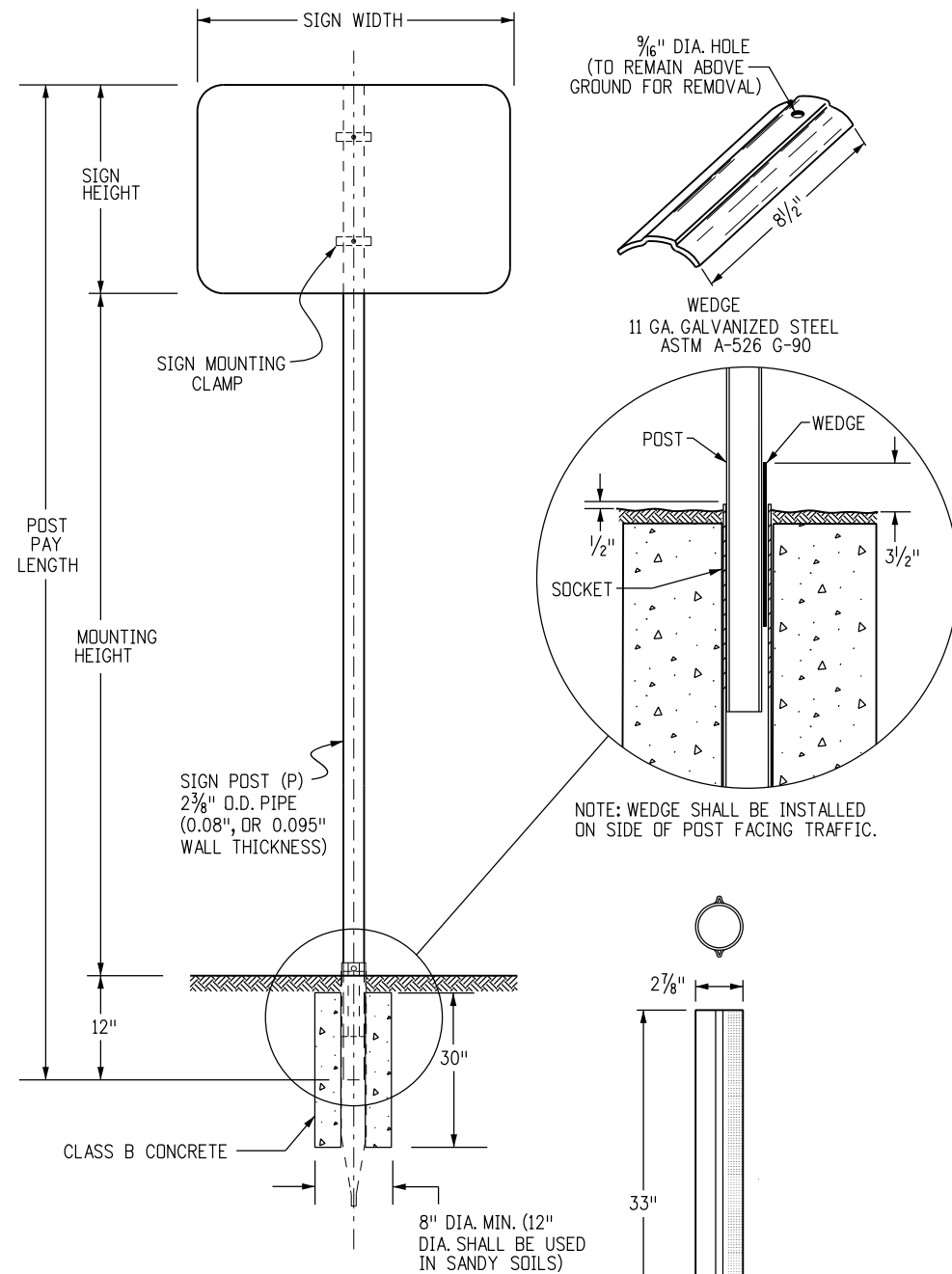


**TUBULAR STEEL POSTS
(SOCKET SYSTEM) (FOR USE WITH ALL P-POST INSTALLATIONS)
(SEE SHEET 2 FOR P1 AND P2 POST INSTALLATIONS)**

**SIGNPOST SELECTION GUIDE (90 MPH WIND LOAD DESIGN)
(FOR SOCKET SYSTEM AND SLIPBASE INSTALLATIONS USING P, P1 OR P2 POSTS)**



SIGN HEIGHT (FT)	7' MOUNTING HEIGHT									8' MOUNTING HEIGHT									9' MOUNTING HEIGHT										
	SIGN WIDTH (FT)									SIGN WIDTH (FT)									SIGN WIDTH (FT)										
	1	2	2.5	3	4	5	6	7	8	9	1	2	2.5	3	4	5	6	7	8	9	1	2	2.5	3	4	5	6	7	8
1	P	P	P	P	P	P1	SIZES NOT USED			SIZES NOT USED									SIZES NOT USED										
2	P	P	P	P	P	P1	SIZES NOT USED			SIZES NOT USED									SIZES NOT USED										
2.5	P	P	P	P	P1	P1	SIZES NOT USED			SIZES NOT USED									SIZES NOT USED										
3	P	P	P	P1	P1	P1	SIZES NOT USED			SIZES NOT USED									SIZES NOT USED										
4	P	P1	P1	P1	P1	P1	SIZES NOT USED			SIZES NOT USED									SIZES NOT USED										
5	SIZES NOT USED		P1	P1	P1	P1	SIZES NOT USED			SIZES NOT USED									SIZES NOT USED										
6	SIZES NOT USED		P1	P1	P1	P2	SIZES NOT USED			SIZES NOT USED									SIZES NOT USED										
7	SIZES NOT USED		P1	P1	P2	TWO P1'S	TWO P2'S	SIZES NOT USED	SIZES NOT USED									SIZES NOT USED											

SEE CHART NOTE 4.

CHART NOTES

- TYPICAL POST MOUNTING HEIGHTS FROM GROUND TO BOTTOM OF SIGN PANEL ARE 7, 8 OR 9 FEET. OTHER HEIGHTS MAY BE REQUIRED WHEN SIGNS ARE MOUNTED ON STEEPER FILL OR CUT SLOPES.
- FOR SIGNS MOUNTED ON TWO POSTS, THE MINIMUM DISTANCE BETWEEN POSTS SHALL BE 2 FEET AND THE MAXIMUM DISTANCE SHALL BE 8 FEET. DISTANCE FROM POST TO EDGE OF SIGN PANEL(S) SHALL BE 0 TO 4 INCHES. WHEN BACKING ZEES ARE USED, POSTS SHALL BE INSTALLED WITH A MINIMUM OF 2 INCHES TO THE EDGE OF THE BACKING ZEE.
- ALL SIGN PANELS GREATER THAN 60 INCHES IN WIDTH MUST BE MOUNTED ON TWO POSTS TO PREVENT TURNING.
- THE POST SIZES SHOWN ARE THE MINIMUM SIZES REQUIRED. TWO P1 POSTS MAY BE SUBSTITUTED WHERE ONE P2 POST IS INDICATED. P2 POSTS MAY BE SUBSTITUTED FOR P1 POSTS WHEN DIRECTED BY THE ENGINEER.

GENERAL NOTES

- SIGNS BETWEEN 37 IN. AND 60 IN. WIDTH WITH ONE POST INSTALLATION REQUIRE A T OR U SIGN SUPPORT BRACKET IN ADDITION TO THE BACKING ZEE REQUIREMENTS. WHEN DIRECTED BY THE ENGINEER, SIGN PANELS LESS THAN 48 IN. IN WIDTH MAY ATTACHED DIRECTLY TO T OR U BRACKETS WITHOUT ZEES.
- U-BRACKETS MAY BE USED FOR MULTIPLE SIGN INSTALLATIONS.
- FOR BACKING ZEE REQUIREMENTS AND DETAILS, SEE STANDARD PLANS S-614-3 AND S-614-4.

POST SPECIFICATIONS

POST SIZE	OUTSIDE DIAMETER	WALL THICKNESS	MATERIAL	** COATING	MAX ALLOW MOMENT	PAID FOR AS:
P	2.375"	.080"	ASTM-513	ASTM A-653 G-210 WITH 3.0 MIL	1.47 KIP FT	STEEL SIGN SUPPORT (2 INCH ROUND)
P1	2.875"	.160"	ASTM-513	POLYMER COATING PER ASTM A123 CLEAR COATING	4.02 KIP FT	STEEL SIGN SUPPORT (2 1/2 INCH ROUND NP-40)
P2	2.875"	.276"	ASTM-500	GC HOT DIPPED PER ASTM-123	5.13 KIP FT	STEEL SIGN SUPPORT (2 1/2 INCH ROUND SCH 80)

** COLOR POWDER COATING MAY BE ADDED ACCORDING TO MANUFACTURER SPECIFICATIONS FOR SPECIAL LOCATIONS WHEN SHOWN ON THE PLANS.

POST NOTES

THE POST MAY BE PRE-PUNCHED WITH 3/16" DIA. HOLES AND THE SIGN MOUNTED DIRECTLY TO THE POST, OR AN APPROVED MOUNTING CLAMP MAY BE USED TO MOUNT THE SIGN TO THE POST. IF THE POST IS PRE-PUNCHED, THE HOLES SHALL BE SPACED THE FOLLOWING DISTANCES FROM THE TOP:

1", 3", 10", 16", 21", 23", 24", 27", 33", 37", 39", AND 45"

TUBULAR CONCRETE FOOTING
12 GA. GALVANIZED
STEEL ASTM - 787

Computer File Information

Creation Date: 07/04/12	Initials: KEN
Last Modification Date: 08/05/16	Initials: NNC
Full Path: www.coloradodot.info/library/traffic/traffic-s-standard-plans	
Drawing File Name: S-614-08.dgn	
CAD Ver.: MicroStation V8i Scale: Not to Scale Units: English	

Sheet Revisions

Date:	Comments
03/05/13	SHTS 1 & 2 - UPDATED DETAIL TITLES
10/23/14	SHT 2 - MOVED SLIPBASE DETAILS TO SHEET 3, AND ADDED 4" BASE PLATE DETAIL TO NEW SHEET 3

Colorado Department of Transportation



4201 East Arkansas Avenue
Denver, Colorado 80222
Phone: 303-757-9543 FAX: 303-757-9219

Safety & Traffic Engineering

KCM

**TUBULAR STEEL SIGN
SUPPORT DETAILS**

Issued By: Safety & Traffic Engineering Branch July 4, 2012

STANDARD PLAN NO.

S-614-8

Sheet No. 1 of 6