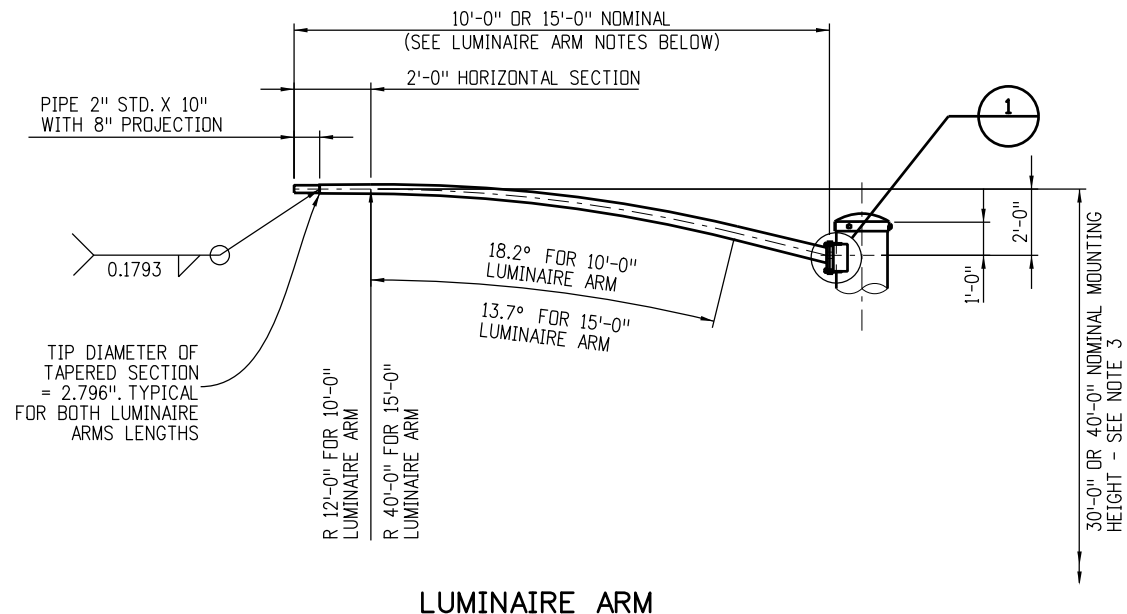
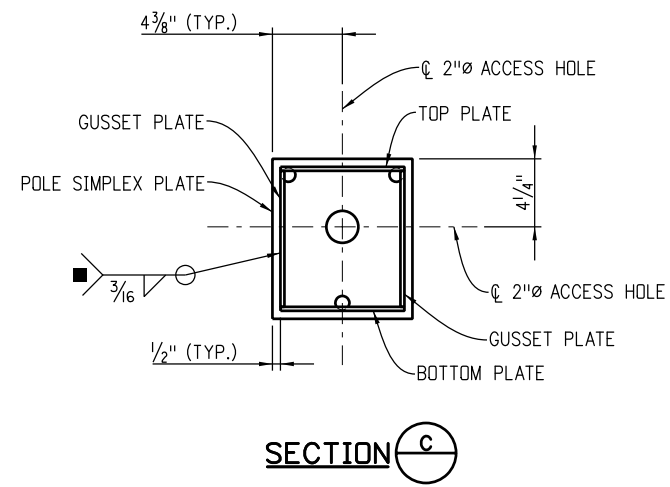


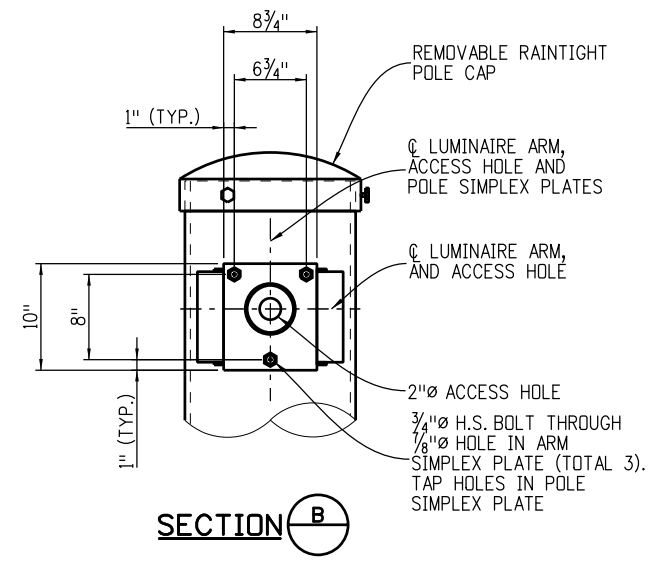
-SPAN WIRE DETAILS (3 OF 3)-



LUMINAIRE ARM



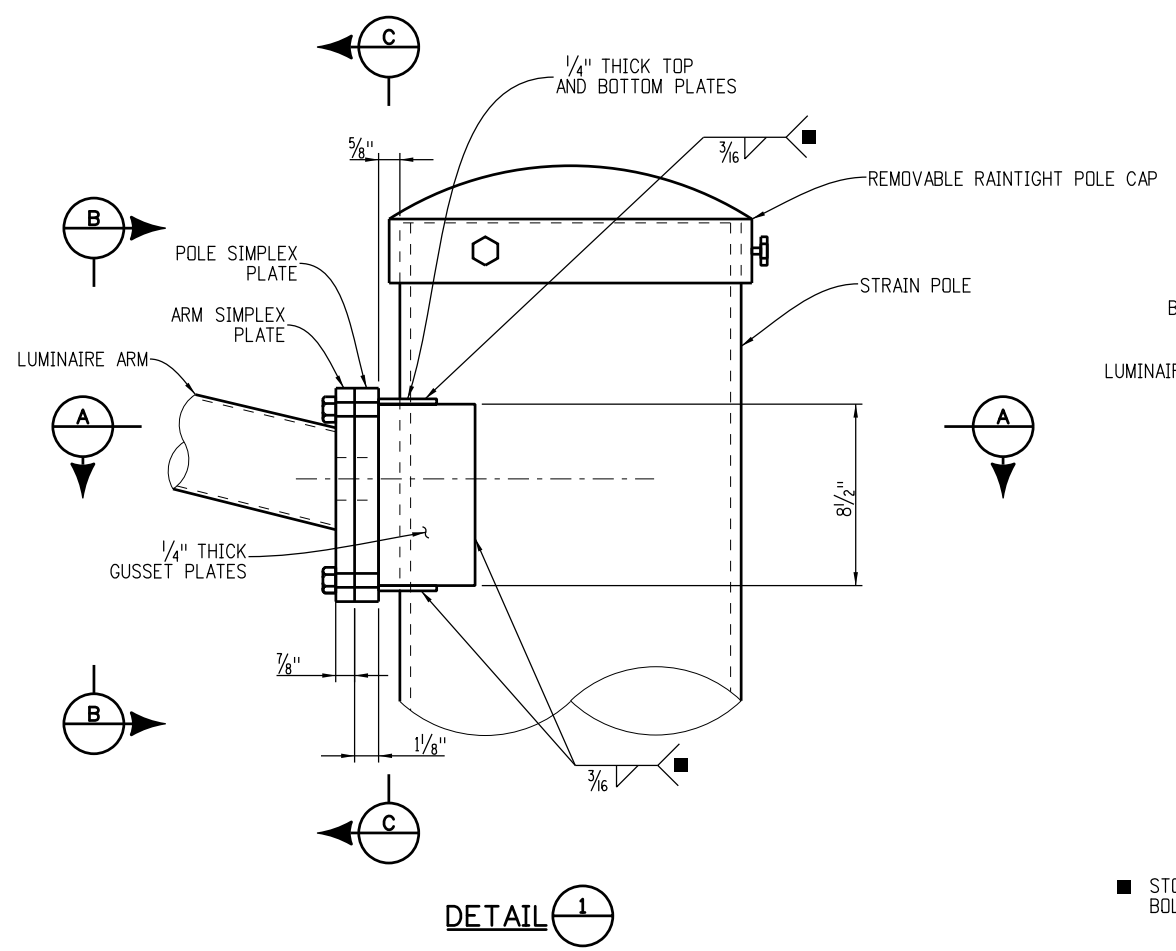
SECTION C



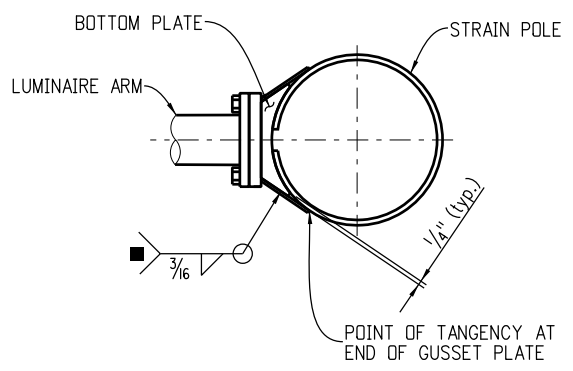
SECTION B

LUMINAIRE ARM NOTES

- 10'-0" LUMINAIRE ARM SHAFT: WALL THICKNESS = 0.1793"; LINEAR TAPER = 0.14 IN./FT.; DIAMETER AT ARM SIMPLEX PLATE = 4.066"
- 15'-0" LUMINAIRE ARM SHAFT: WALL THICKNESS = 0.1793"; LINEAR TAPER = 0.14 IN./FT.; DIAMETER AT ARM SIMPLEX PLATE = 4.679"
- THE 30'-0" OR 40'-0" HEIGHT IS MEASURED FROM THE EDGE OF SHOULDER OR GUTER FLOW LINE TO THE CENTER OF THE LUMINAIRE. POLE ASSEMBLY SHALL BE AT SUFFICIENT LENGTH TO OBTAIN MOUNTING HEIGHT, WITH MAX. PERMISSIBLE MAST ARM RISE OF 2'-0" FROM TOP OF POLE TO CENTER OF LUMINAIRE.



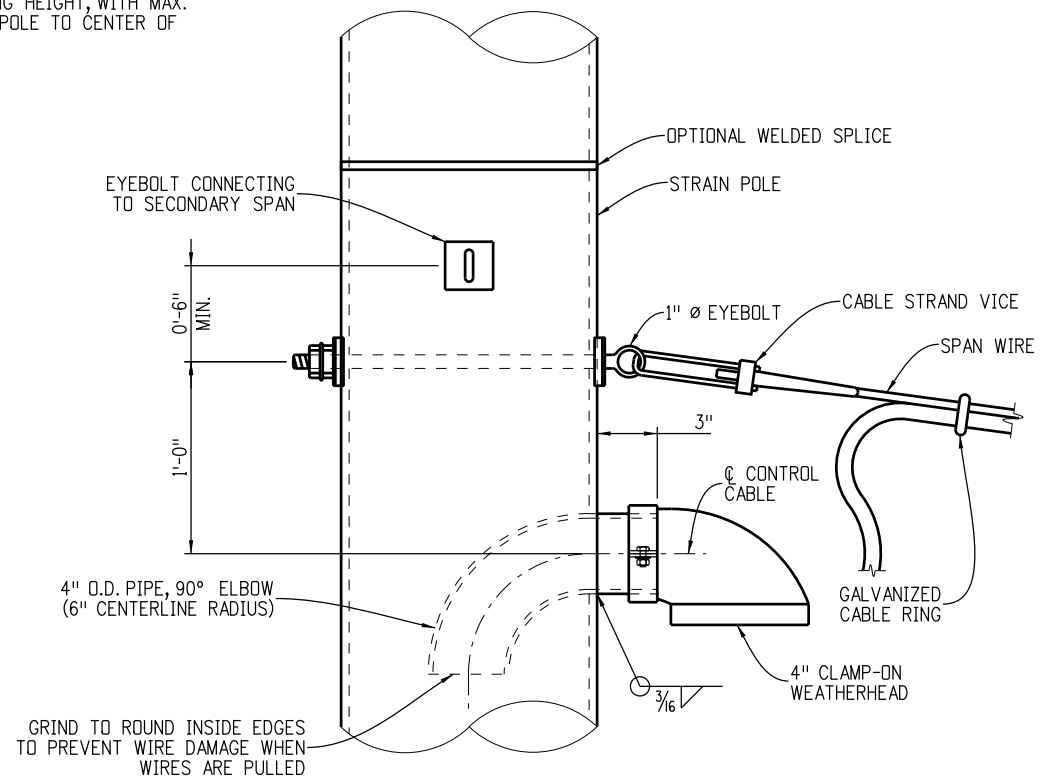
DETAIL 1



SECTION A

(BOTTOM PLATE SHOWN; TOP PLATE SIMILAR)

■ STOP ALL WELDS 1/2" SHORT OF PLATE EDGES AND BOLT HOLES.



UPPER CONTROL CABLE PENETRATION DETAIL

<b>Computer File Information</b> Creation Date: 07-01-11      Initials: LEC Last Modification Date: 07-24-14      Initials: HHB Full Path: www.dot.state.co.us/DesignSupport/ Drawing File Name: S-614-41 (4 of 13).dgn CAD Ver.: MicroStation V8      Scale: Not to Scale      Units: English		<b>Sheet Revisions</b> <table border="1"> <thead> <tr> <th>Date:</th> <th>Comments</th> </tr> </thead> <tbody> <tr> <td> </td> <td> </td> </tr> <tr> <td> </td> <td> </td> </tr> <tr> <td> </td> <td> </td> </tr> </tbody> </table>		Date:	Comments							<b>Colorado Department of Transportation</b>  4201 East Arkansas Avenue Denver, Colorado 80222 Phone: (303) 757-9543 Fax: (303) 757-9219 <b>Safety &amp; Traffic Engineering Branch      KCM/RLD</b>		<b>TEMPORARY SPAN WIRE SIGNALS</b> Issued By: Safety & Traffic Engineering Branch July 4, 2012		<b>STANDARD PLAN NO.</b> S-614-41 Sheet No. 4 of 13	
Date:	Comments																

bulh 4:56:22 PM c:\projectwise\pwworking\dot260083\S-614-41 (4 of 13).dgn