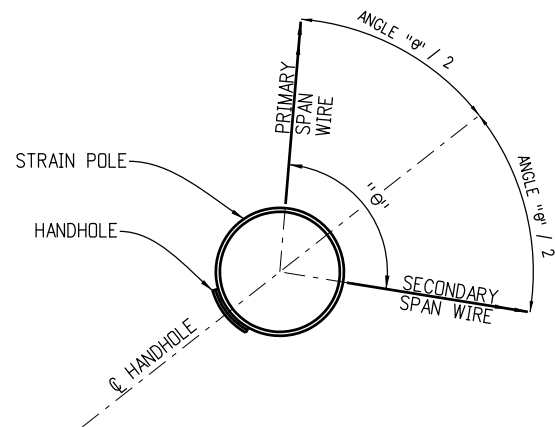
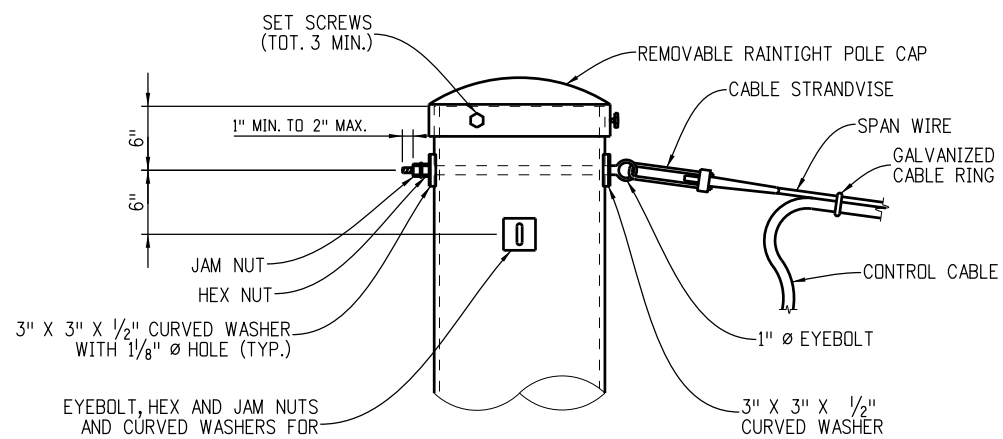


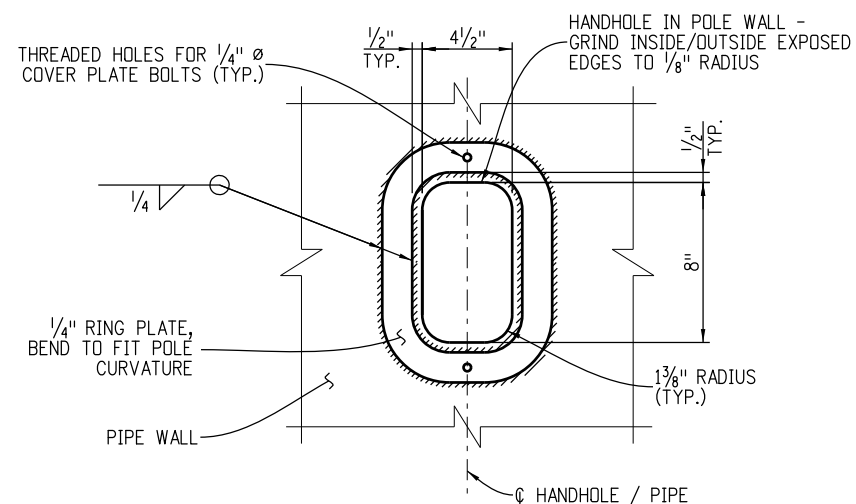
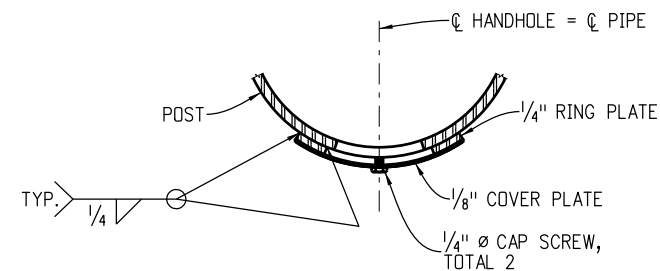
-SPAN WIRE DETAILS (2 OF 3)-



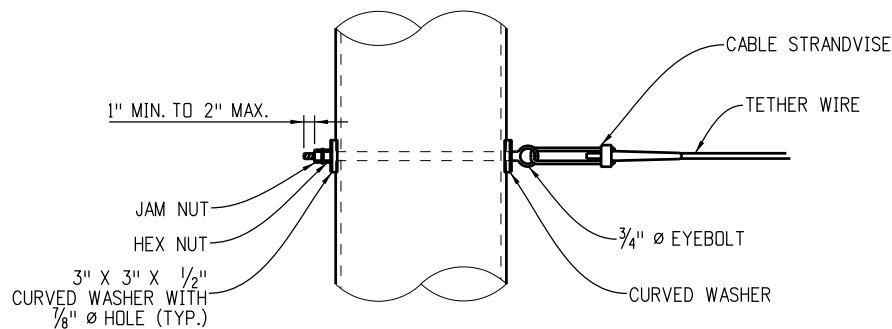
SPAN WIRE ORIENTATION
(EYEBOLTS AND WASHERS NOT SHOWN FOR CLARITY)



STRAIN POLE WITHOUT LUMINAIRE ARM EXTENSION

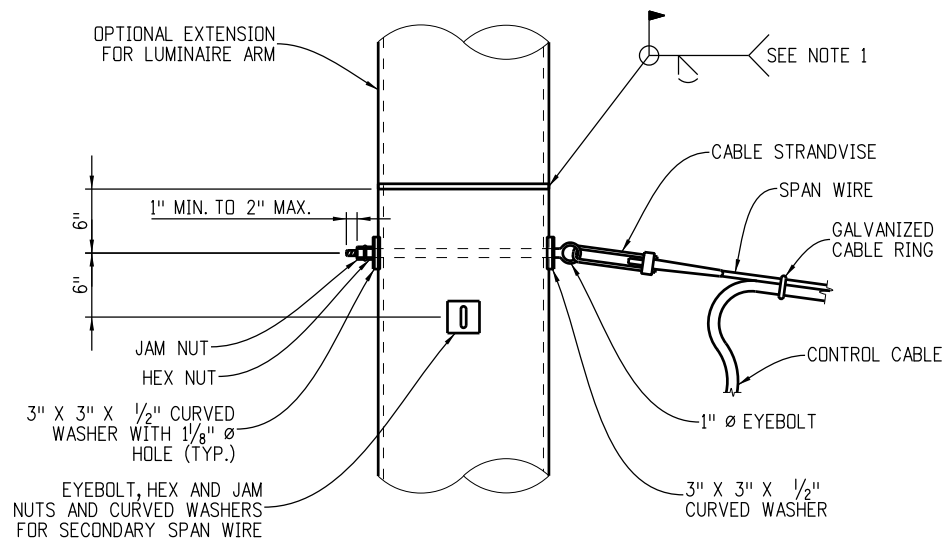


HANDHOLE DETAILS

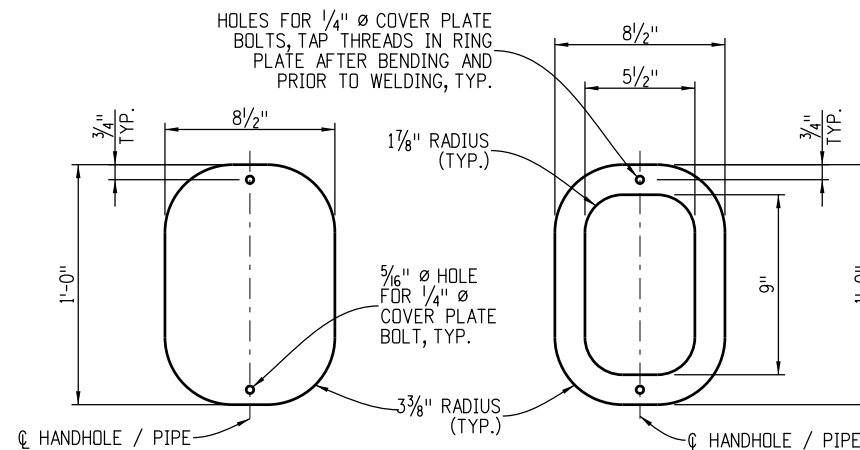


TETHER WIRE CONNECTION TO STRAIN POLE

- NOTES:**
- OPTIONAL FIELD WELD: REPAIR DAMAGED HOT-DIP GALVANIZING WITH ZINC-BASED ALLOY SOLDER AS PER ASTM A780 ANNEX A1 OR SPRAYED ZINC METALLIZING AS PER ANNEX A3 TO PROVIDE A MINIMUM COATING THICKNESS OF 3.0 MILLS IN ACCORDANCE WITH TABLE 2 FOR COATING GRADE 75.

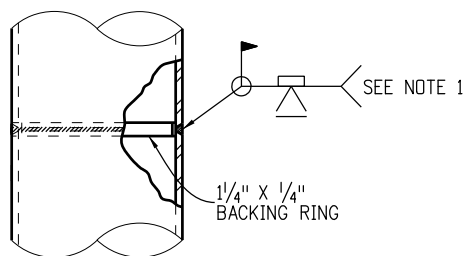


SPAN WIRE CONNECTION TO STRAIN POLE



1/8" THICK COVER PLATE
(BEND TO FIT RING PLATE CURVATURE)

1/4" THICK RING PLATE
(BEND TO FIT POLE CURVATURE)



STRUCTURAL WELDED SPLICE

Computer File Information

Creation Date: 07-01-11	Initials: LEC
Last Modification Date: 07-24-14	Initials: HHB
Full Path: www.dot.state.co.us/DesignSupport/	
Drawing File Name: S-614-41 (3 of 13).dgn	
CAD Ver.: MicroStation V8 Scale: Not to Scale Units: English	

Sheet Revisions

Date:	Comments:

Colorado Department of Transportation



4201 East Arkansas Avenue
Denver, Colorado 80222
Phone: (303) 757-9543
Fax: (303) 757-9219

Safety & Traffic Engineering Branch KCM/RLD

TEMPORARY SPAN WIRE SIGNALS

Issued By: Safety & Traffic Engineering Branch July 4, 2012

STANDARD PLAN NO.

S-614-41

Sheet No. 3 of 13