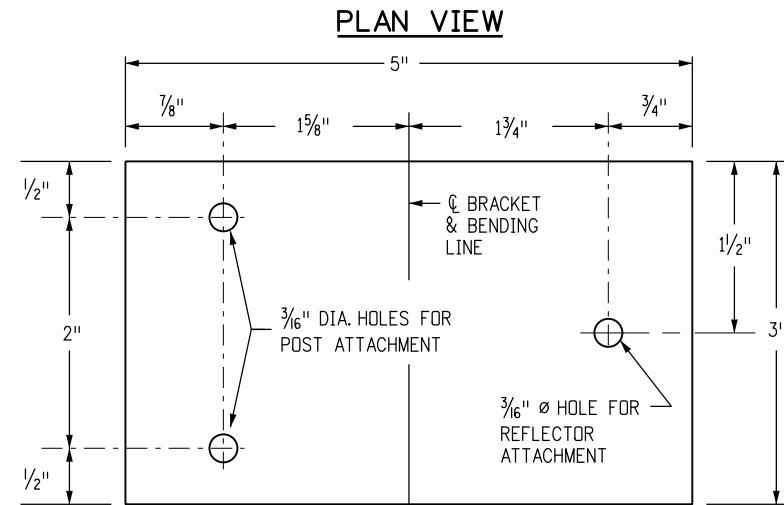
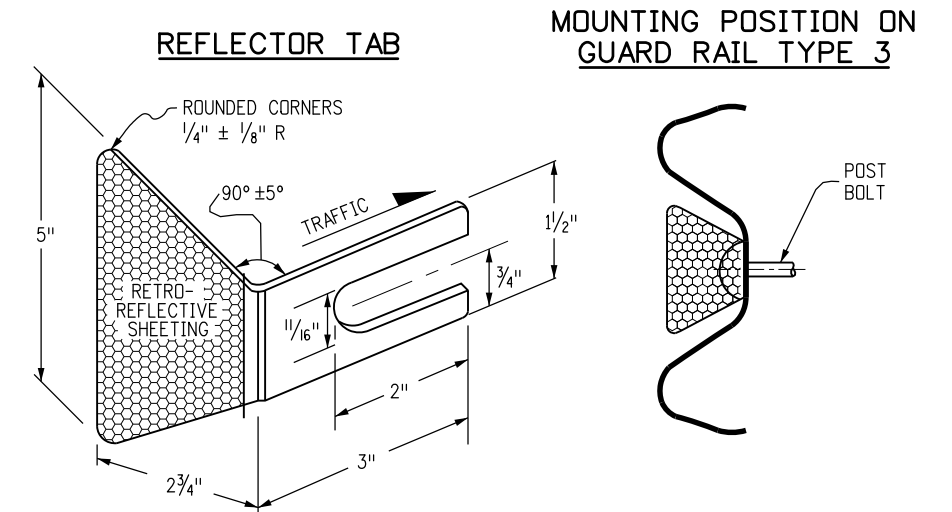


TYPICAL REFLECTOR DETAILS FOR CONCRETE BARRIER

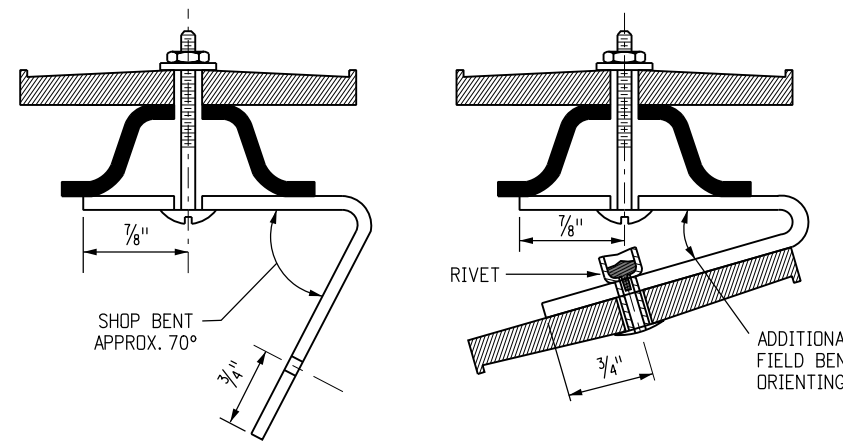


TYPICAL ADJUSTABLE REFLECTOR BRACKET



TYPICAL GUARDRAIL REFLECTOR TAB

SEE THE APPROPRIATE GUARDRAIL STANDARD PLANS FOR REFLECTOR TAB FABRICATION AND PLACEMENT DETAILS.



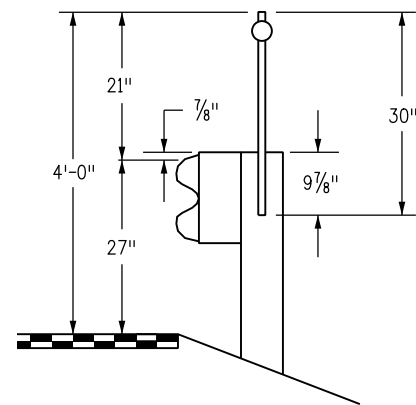
TYPICAL BRACKET FABRICATION DETAILS

BRACKET NOTES

1. THE ADJUSTABLE REFLECTOR BRACKET IS TO BE USED TO "TRAFFIC ORIENT" BACK-TO-BACK DELINEATORS USED ON CURVES.
2. REFLECTOR BRACKETS SHALL BE FABRICATED FROM EITHER GALVANIZED STEEL NOT LESS THAN 16 GAGE, OR ALUMINUM NOT LESS THAN 0.100 INCH THICKNESS.
3. BOLTS, NUTS AND WASHERS SHALL BE GALVANIZED OR CADMIUM PLATED.
4. ALL BRACKET HOLES ARE 3/16 IN. DIAMETER AND DELINEATOR POSTS REQUIRE AN ADDITIONAL HOLE 2 IN. BELOW THE TOP HOLE PROVIDED IN THE POST.
5. SHOP BEND THE BRACKET APPROX. 70 DEGREES AS SHOWN, ATTACH TO THE DELINEATOR POST WITH 3/16 IN. BOLTS AND FIELD BEND AS NECESSARY TO TRAFFIC ORIENT. THEN THE BRACKET REFLECTOR CAN BE ATTACHED WITH A 3/16 IN. BLIND EXPANSION RIVET OR A BOLT.
6. BURR THE THREADS OF ALL BOLTS TO PREVENT NUT LOOSENING OR VANDALISM.

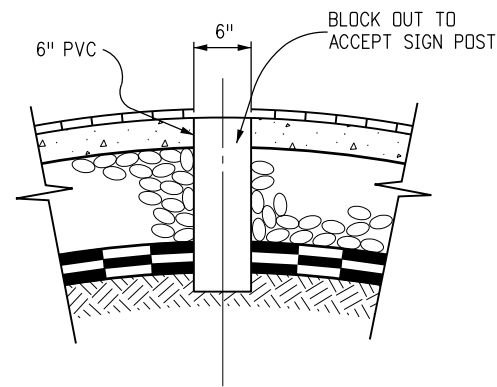
BARRIER REFLECTOR NOTES

1. BARRIER REFLECTORS, REGARDLESS OF TYPE, SHALL MEET THE RETROREFLECTIVE QUALITIES SPECIFIED IN SECTION 713 OF THE STANDARD SPECIFICATIONS FOR DELINEATOR REFLECTORS, AND BE PAID FOR AS DELINEATOR (TYPE -) (BARRIER) (EACH). USE OF THESE REFLECTORS IS MANDATORY.
2. THE COLOR OF REFLECTIVE SURFACE SHALL MATCH THE COLOR OF THE ADJACENT EDGE LINE.
3. CONCRETE SURFACE PREPARATION, ADHESIVE, AND METHOD OF APPLICATION SHALL BE AS RECOMMENDED BY THE REFLECTOR MANUFACTURER.
4. UNLESS OTHERWISE NOTED IN THE PLANS OR DIRECTED BY THE ENGINEER, A 200 FOOT MAXIMUM TANGENT AND CURVE SPACING APPLIES TO BARRIER REFLECTORS.
5. TOP MOUNT REFLECTORS ARE STANDARD. SIDEMOUNT BARRIER REFLECTORS OR 6 INCH WIDE REFLECTOR STRIPS MAY BE REQUIRED IF SPECIFIED IN THE PLANS.
6. MEDIAN BARRIER REFLECTORS SHALL BE TYPE II (YELLOW-YELLOW, BACK-TO-BACK).
7. FOR A TWO-WAY ROADWAY BARRIER, REFLECTORS SHALL BE TYPE II (CRYSTAL-CRYSTAL, BACK-TO-BACK).
8. FOR TEMPORARY CONCRETE BARRIER, REFLECTORS SHALL BE INSTALLED THAT MEET THE MINIMUM REQUIREMENTS OF STANDARD TYPICAL DELINEATOR INSTALLATIONS, EXCEPT THE MAXIMUM SPACING SHALL BE 50 FT., AND THEY WILL NOT BE PAID FOR, BUT ARE INCLUDED IN THE WORK.



TYPICAL GUARDRAIL POST MOUNT DELINEATORS

POST MOUNT DELINEATORS SHALL BE ATTACHED BY A METHOD APPROVED BY THE ENGINEER OR A METHOD REQUIRED BY THE DEVICE MANUFACTURER.



TYPICAL SLEEVE INSTALLATION FOR MEDIAN DELINEATOR POSTS

<b>Computer File Information</b>		<b>Sheet Revisions</b>		<p>Colorado Department of Transportation 4201 East Arkansas Avenue Denver, Colorado 80222 Phone: 303-757-9543 FAX: 303-757-9219 Safety &amp; Traffic Engineering KCM</p>	<p><b>DELINEATOR INSTALLATIONS</b></p> <p>Issued By: Safety &amp; Traffic Engineering Branch July 04, 2012</p>	<b>STANDARD PLAN NO.</b>
Creation Date: 07/04/12	Initials: RPR	Date:	Comments:			S-612-1
Last Modification Date:	Initials:					
Full Path: www.coloradodot.info/library/traffic/traffic-s-standard-plans						
Drawing File Name: S-612-01.dgn						
CAD Ver.: MicroStation V8i	Scale: Not to Scale	Units: English				Sheet No. 4 of 7