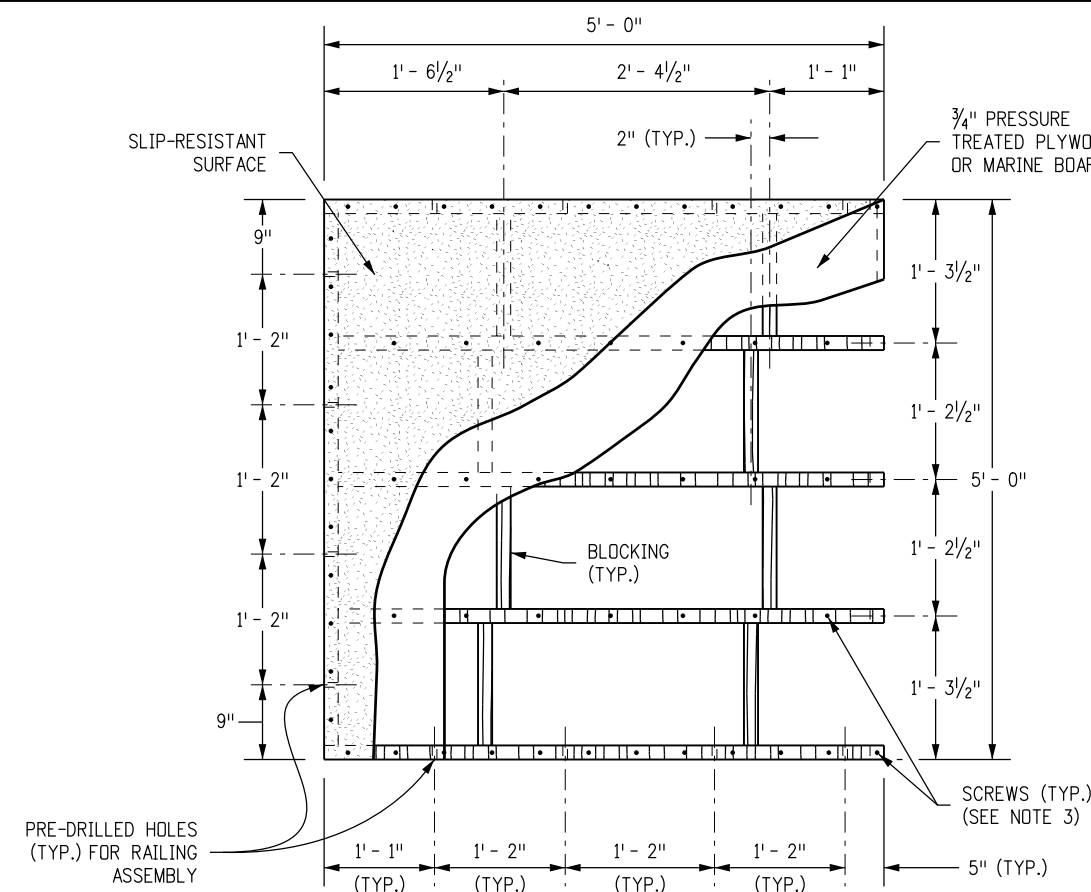
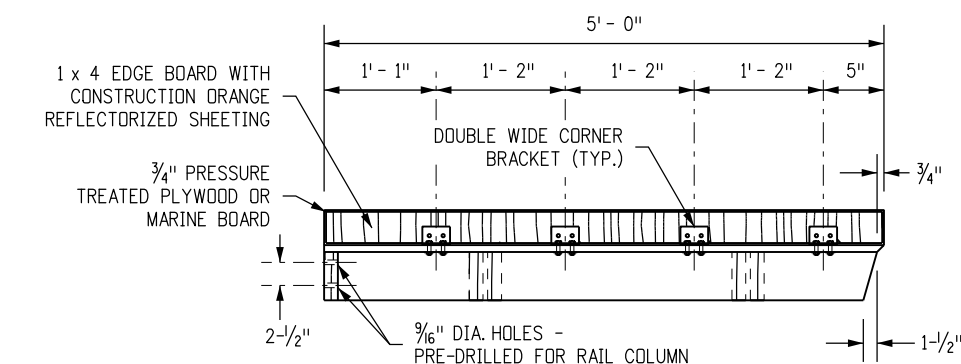


NOTES

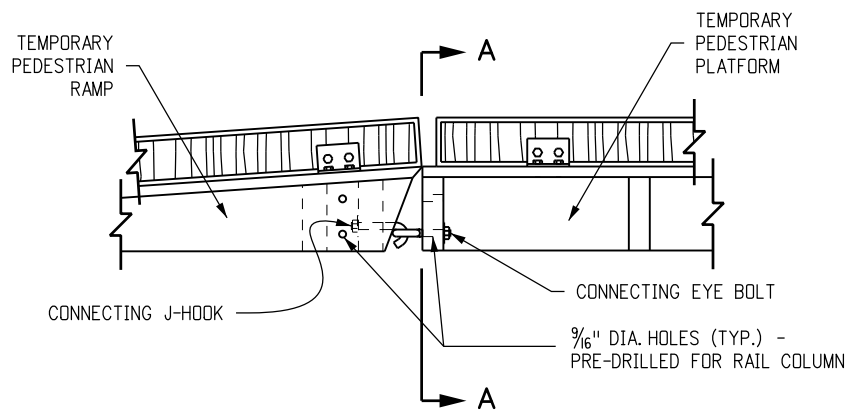
1. ALL HOLES SHOWN SHALL BE DRILLED TO FACILITATE RE-USE AND FLEXIBLE EXPANSION.
2. THIS DESIGN ASSUMES OPTIMAL CONDITIONS AND A STANDARD CURB HEIGHT OF 6 INCHES. INSTALLED RAMPS SHALL BE NO STEEPER THAN 8.3% AND SHALL HAVE A CROSS-SLOPE OF 2.0% OR LESS. USE SHIMS OR GROUT AS REQUIRED TO ADJUST FOR EXISTING CONDITIONS AND TO PREVENT ROCKING. SHIMS SHALL BE NO HIGHER THAN 1 INCH AND SHALL BE SECURED TO THE RAMP AND/OR PLATFORM. FOR CURBS SHORTER THAN 6 INCHES, INSTALL A RAMP ON THE SIDEWALK, NO STEEPER THAN 8.3%, AND MADE OF GROUT OR AS APPROVED BY THE ENGINEER. ADJUSTMENTS TO THE PLATFORM DIMENSIONS SHOWN MAY BE REQUIRED TO MATCH EXISTING CONDITIONS.
3. SCREWS SHALL BE USED TO SECURE THE RAMP SURFACE. SPACING SHALL BE IN ACCORDANCE WITH THE CURRENT BUILDING CODE.
4. USE A SLIP-RESISTANT TREATMENT FOR SURFACE OF RAMP.
5. ALL FASTENERS SHALL BE GALVANIZED.



PLAN VIEW



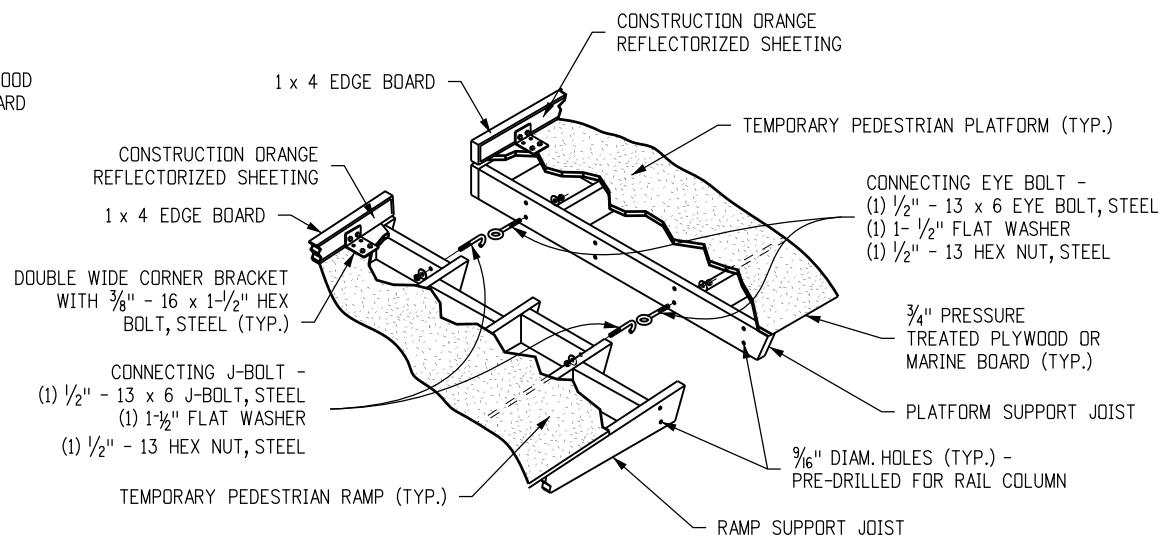
ELEVATION VIEW



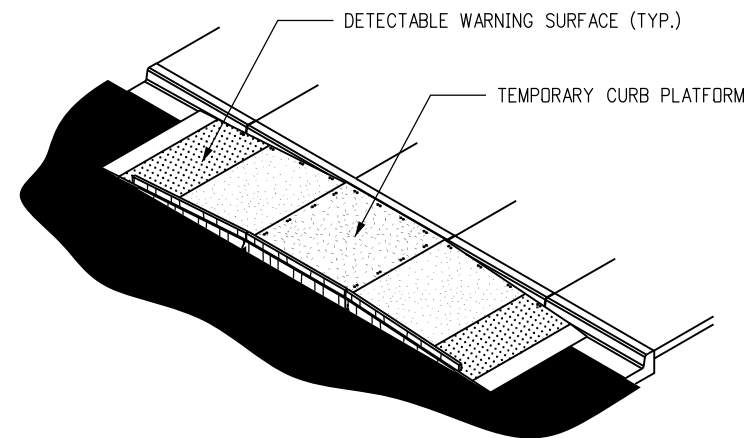
SIDE VIEW

PLATFORM DETAILS

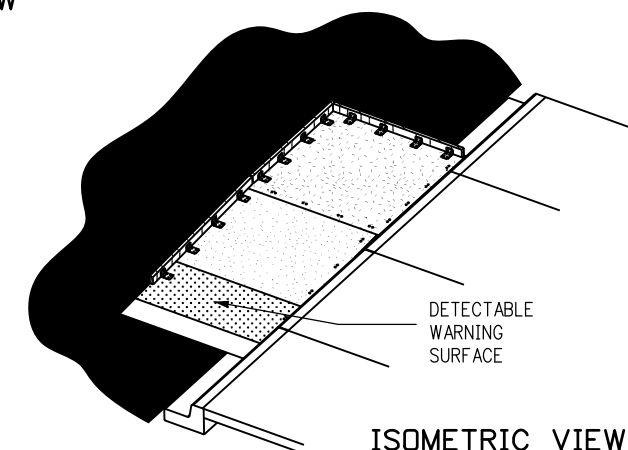
TEMPORARY PARALLEL CURB RAMPS (SINGLE OR DUAL)



**SECTION A-A
PERSPECTIVE VIEW**



**ISOMETRIC VIEW
DUAL RAMP**



**ISOMETRIC VIEW
SINGLE RAMP**

Computer File Information	
Creation Date: 12/01/16	Initials: JBK
Last Modification Date: 02/23/17	Initials: LTA
Full Path: www.coloradodot.info/business/designsupport	
Drawing File Name: 60801010010.dgn	
CAD Ver.: MicroStation V8	Scale: Not to Scale Units: English

Sheet Revisions	
Date:	Comments
02/23/17	Added this sheet.
(R-X)	
(R-X)	
(R-X)	
(R-X)	

Colorado Department of Transportation
 4201 East Arkansas Avenue
 Denver, Colorado 80222
 Phone: (303) 757-9021
 Fax: (303) 757-9820
 Project Development Branch JBK/LTA

CURB RAMPS
 Issued By: Project Development Branch on July 4, 2012

STANDARD PLAN NO.
M-608-1
Sheet No. 10 of 10