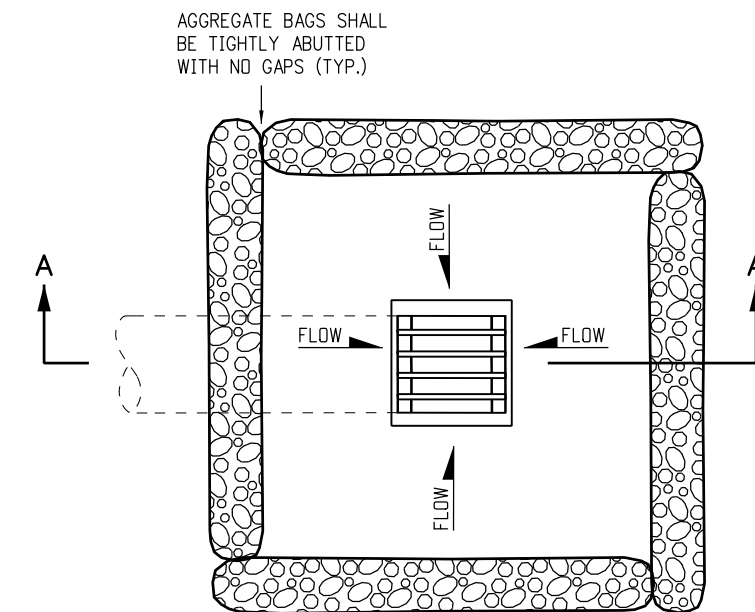


PLAN VIEW

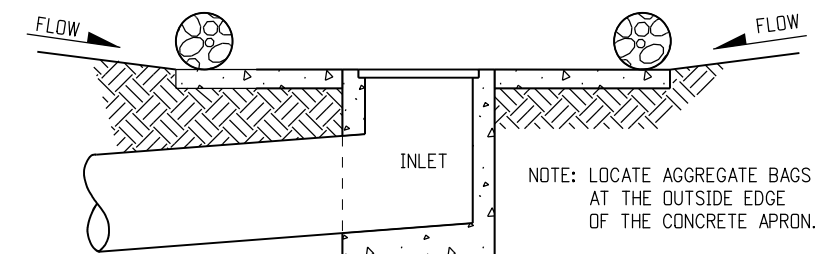
* NOTE: USE AGGREGATE BAGS ONLY WHEN THERE IS A MINIMUM CLEARANCE OF 3 FEET FROM THE EDGE OF THE TRAVELED WAY TO THE FACE OF CURB.

LENGTH OF INLET (L)	NUMBER OF AGGREGATE BAGS UPSTREAM OF INLET
0' - 5'	1
6' - 10'	2
L > 10'	3

AGGREGATE BAGS AT STORM DRAIN INLET (TYPE I)



PLAN VIEW



SECTION A-A

AGGREGATE BAGS AT DROP INLET

AGGREGATE BAG APPLICATIONS

NOTE: THE PAY ITEM NUMBER FOR AGGREGATE BAG (LF) IS 208-00035

Computer File Information		Sheet Revisions		Colorado Department of Transportation  4201 East Arkansas Avenue CDOT HQ, 4th Floor Denver, CO 80222 Phone: 303-757-9021 FAX: 303-757-9868 Division of Project Support JBK/LTA	TEMPORARY EROSION CONTROL	STANDARD PLAN NO.
Creation Date: 07/04/12	Initials: JBK	Date:	Comments:			M-208-1
Last Modification Date: 03/29/16	Initials: LTA	03/29/16	Added some dimensions and Note.			Sheet No. 4 of 11
Full Path: www.coloradodot.info/business/designsupport	(R-X)				Issued By: Project Development Branch on July 4, 2012	
Drawing File Name: 2080104011.dgn	(R-X)					
CAD Ver.: MicroStation V8	(R-X)					
Scale: Not to Scale						
Units: English						