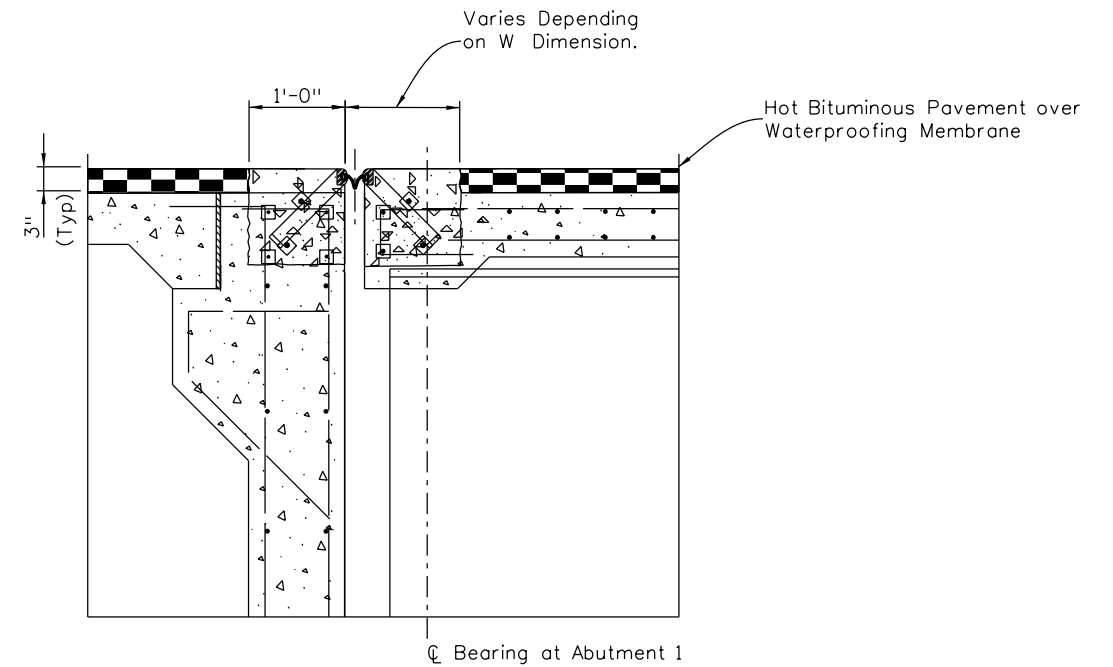


**EXISTING EXPANSION JOINT REMOVALS**



**NEW EXPANSION DEVICE INSTALLATION**

**TYPICAL SECTIONS STRUCTURES K-18-EP**  
At Abutment 1 Back Faces



Portions of structure to be removed. Reinforcing protruding from cut line to remain. (Clean and straighten). Paid For Under Item 202 Removal of Expansion Device.



Concrete Class D (Bridge) (Special).

Reinforcing to be removed and replaced with new #5 (E) reinforcing

New #5 (E) reinforcing

groenemond 3:49:02 PM \\PUB\BLC\Bridges\Commmon\0226\Overlay\_Projects\FY\_2017\20755\_SH\_45\_MP\_49\_to\_B\_7\_Drawings\20755\_07\_Exp\_Dev\_Removaland\_ReplK-18-EP.dgn

Design		Detail		Quantities	
INITIAL	DATE	INITIAL	DATE	INITIAL	DATE
Designed By JEB	12-16	Detailed By JEB	12-16	Quantities By JEB	12-16
Checked By DDG	12-16	Checked By DDG	12-16	Checked By DDG	12-16

Print Date: 2/15/2017	0000
File Name: 20755_07_Exp_Dev_Removaland_ReplK-18-EP.dgn	
Horiz. Scale: NTS      Vert. Scale: As Noted	
Staff Bridge Branch - Unit 0226      Unit Leader DDG	

Sheet Revisions		
Date:	Comments	Init.

**Colorado Department of Transportation**



902 Erie Avenue  
Pueblo, CO 81001  
Phone: 719-562-5509    FAX: 719-546-5702

**Region 2**      **DTD**

<b>As Constructed</b>
No Revisions:
Revised:
Void:

<b>EXPANSION DEVICE REMOVAL AND REPLACEMENT K-18-FO</b>			
Designer:	J. Bjorkquist	Structure Numbers	K-18-EP
Detailer:	J. Bjorkquist	Subset Sheets:	B07 of 10
Sheet Subset:	Bridge		

<b>Project No./Code</b>
STM SH45-001
20755
Sheet Number <b>87</b>