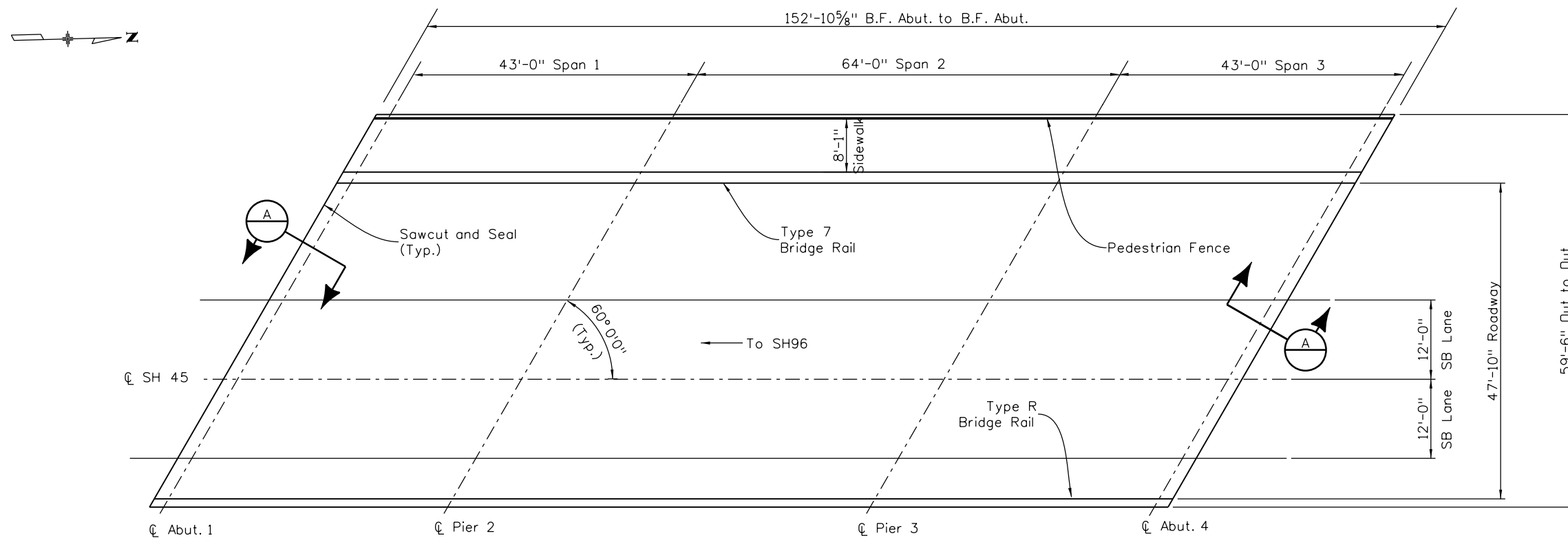


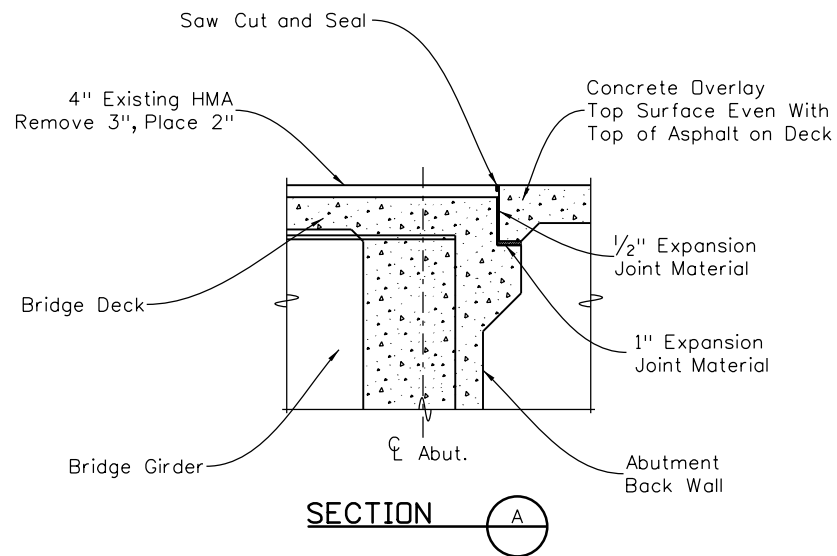
groenemad 3:48:59 PM \\PUBLIC\Bridges\0226\Overlay Projects FY 2017\20755 SH 45 MP 4.9 to 8.7\Drawings\20755 04 Plan Str. K-18-EV.dgn



**PLAN**

**WORK DESCRIPTION**

1. Mill off 3" of the asphalt wearing surface.
2. Remove any loose asphalt material on the deck.
3. Install 2" asphalt overlay.
4. Install plug joints at abutments 1 and 4.



**SECTION A**

**BRIDGE DESCRIPTIONS**

Structure Number:	K-18-EV
Facility Carried:	SH 45 (SB)
Feature Intersected:	UP RR
Mile Post:	6.350
Year Built:	1982
Structure Type:	CICK
Structural Length:	3 Span = 152'-10 5/8"
Out to Out Width:	59'-6"
Roadway Width:	47'-10"
Deck Thickness:	8.0 Inches
Asphalt Thickness:	4.0 Inches *
Deck Protection:	Waterproofing Membrane
Bridge Rail Type:	Type R & Type 7
Expansion Joint Type:	Pourable Seals at Abut.
Sufficiency Rating:	99.3

**NOTES:**

\* For Informational Use Only. Contractor Shall Independently Verify the Asphalt Thickness Across the Bridge

Design		Detail		Quantities	
DATE	INITIAL	DATE	INITIAL	DATE	INITIAL
09/15	JBE	09/15	JBE	09/15	JBE
09/15	DDG	09/15	DDG	09/15	DDG

Print Date: 2/15/2017	
File Name: 20755 04 Plan Str. K-18-EV.dgn	
Horiz. Scale: 1:20	Vert. Scale: 1:20
Staff Bridge Branch Unit 0226	Unit Leader DDG

Sheet Revisions		
Date:	Comments	Init.

**Colorado Department of Transportation**  
 902 Erie Avenue  
 Pueblo, CO 81001  
 Phone: 719-562-5509 FAX: 719-546-5702  
**Region 2** **DTD**

<b>As Constructed</b>	
No Revisions:	
Revised:	
Void:	

<b>PLAN STR. K-18-EV</b>			
Designer:	J. Estes	Structure Numbers:	K-18-EV
Detailer:	J. Estes	Subset Sheets:	B04 of 10
Sheet Subset:	Bridge		

<b>Project No./Code</b>	
STM SH45-001	
20755	
84	