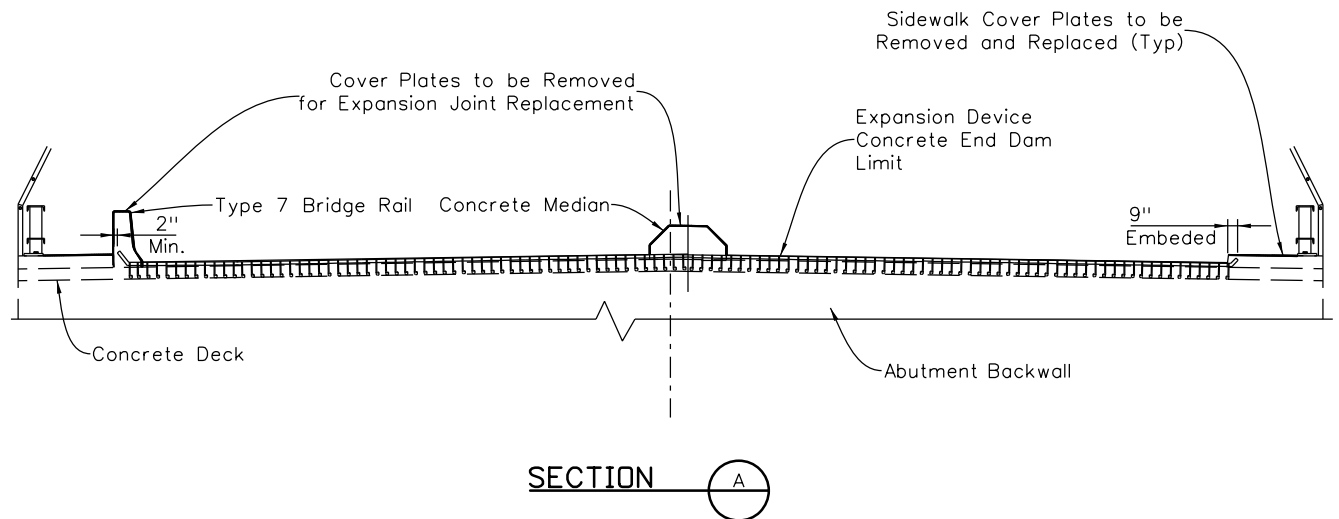
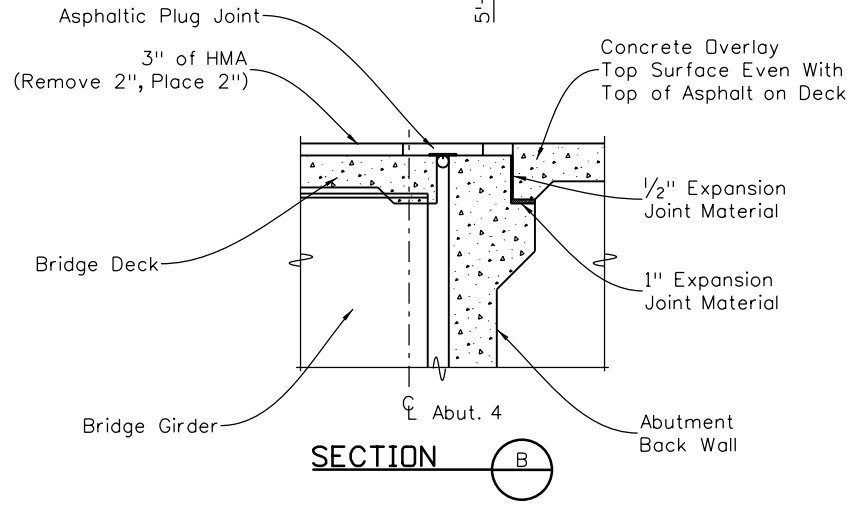
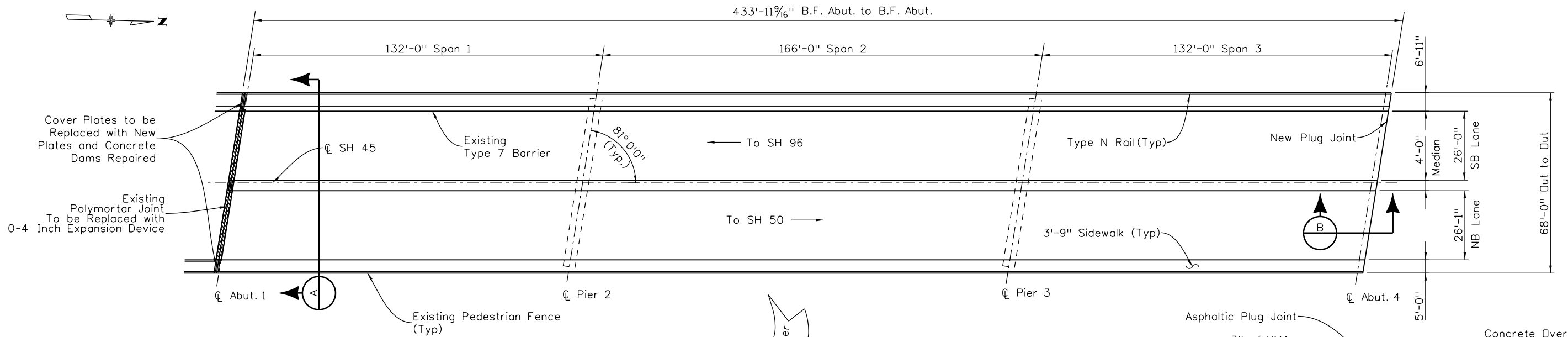


groenmand 3:48:57 PM \\PUBLIC\Bridges\0226\Overlay Projects FY 2017\20755 SH 45 MP 4.9 to 8.7\Drawings\20755 02 Plan Str. K-18-EP.dgn

Design		Detail		Quantities	
DATE	INITIAL	DATE	INITIAL	DATE	INITIAL
08/15	JEB	12-16	JEB	12-16	JEB
12-16	DDG	12-16	DDG	12-16	DDG
Checked By		Checked By		Checked By	



WORK DESCRIPTION

1. Mill off 2" of the asphalt wearing surface.
2. Remove Sidewalk, Median & Type 7 Bridge Rail Cover Plates at Abut. 1.
3. Remove Preformed Expansion Device at Abut. 1.
4. Repair Cover Plate Concrete End Dams at Abut. 1
5. Install New 0-4 Inch Expansion Device at Abut. 1.
6. Install New Cover Plates at Sidewalks and Reinstall Cover Plates at Median and Type 7 Rail.
7. Install 2" HMA overlay.
8. Replace Plug Joint at Abut 4.

NOTES:


* For Informational Use Only. Contractor Shall Independently Verify the Asphalt Thickness Across the Bridge

BRIDGE DESCRIPTIONS

Structure Number:	K-18-EP
Facility Carried:	SH 45
Feature Intersected:	Arkansas River and RR
Mile Post:	5.384
Year Built:	1973
Structure Type:	WGCK
Structural Length:	3 Span = 433-feet
Out to Out Width:	68'-0"
Roadway Width:	52'-1"
Deck Thickness:	7.5 Inches
Asphalt Thickness:	3.0 Inches *
Deck Protection:	Waterproofing Membrane
Bridge Rail Type:	Types N, R & Type 7
Expansion Joint Type:	Polymortar Joint Abut 1. Plug Joint Abut 4.
Sufficiency Rating:	55.0

Print Date: 2/15/2017
File Name: 20755 02 Plan Str. K-18-EP.dgn
Horiz. Scale: Vert. Scale: NTS
Staff Bridge Branch Unit 0226 Unit Leader DDG

Sheet Revisions			
Date:	Comments	Init.	

Colorado Department of Transportation

 902 Erie Avenue
 Pueblo, CO 81001
 Phone: 719-546-5439 FAX: 719-546-5702
 Region 2 DTD

As Constructed
No Revisions:
Revised:
Void:

PLAN STR. K-18-EP			
Designer:	J. Bjorkquist	Structure Numbers:	K-18-EP
Detailer:	J. Bjorkquist	Subset Sheets:	B02 of 10
Sheet Subset:	Bridge		

Project No./Code
STM SH45-001
20755
82