

g:\enr\2017\20755 SH 45 MP 4.9 to 8.7\Drawings\20755 01 General Information.dgn

Design		Detail		Quantities	
INITIAL	DATE	INITIAL	DATE	INITIAL	DATE
JEB	12-16	JEB	12-16	JEB	12-16
DDG	12-16	DDG	12-16	DDG	12-16
Designed By	Checked By	Detailed By	Checked By	Quantities By	Checked By

GENERAL NOTES

Expansion Joint Material Shall Meet Specification M213.

The Following Structural Steel Shall Be AASHTO M270 Grade 36 (ASTM A-36): Expansion Devices.

The Contractor Shall Be Responsible For The Stability Of The Structures During Construction.

Dimensions Contained In These Plans Are Calculated From The "As Constructed Plans". Dimensions May Be Adjusted To Meet The Existing Structure.

The Contractor Shall Verify All Dependent Dimensions In The Field Before Ordering Or Fabricating Any Material.

The Existing Pavement Surface Shall Be Removed From The Existing Structures As Indicated In The Plans And Replaced With Hot Mix Asphalt To The Grade And Cross Slope On The Existing Concrete Deck.

The Information Shown On These Plans Concerning The Type And Location Of Underground Utilities Is Not Guaranteed To Be Accurate Or All Inclusive. The Contractor Is Responsible For Making His Own Determination As To The Type And Location Of Underground Utilities As May Be Necessary To Avoid Damage Thereto. The Contractor Shall Contact The Utilities Notification Center Of Colorado At 1-800-922-1987 At Least 3 Days (Not Including The Day Of Notification) Prior To Any Excavation Or Other Earthwork.

DESIGN DATA

AASHTO, Seventh Edition LRFD With Current Interims

Live Load: HI-93 Design Truck Or Tandem, And Design Lane Load.

Dead Load: Assumes 36 Lbs. Per SF For Bridge Deck Overlay

Design Method: Load And Resistance Factor Design

Concrete Patching Material:

Concrete (Class D): $f'_c = 4,500$ Psi

Reinforcing Steel: $F_y = 60,000$ Psi

Structural Steel:

AASHTO M270 (ASTM A709) Grade 36 $F_y = 36,000$

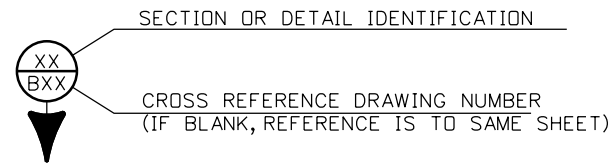
AASHTO M270 (ASTM A709) Grade 50 $F_y = 50,000$

SUMMARY OF QUANTITIES

ITEM NO.	DESCRIPTION	Unit	K-18-EP	K-18-EU	K-18-EV	Minor 045A007100BL	TOTAL
202-00240	REMOVAL OF ASPHALT MAT (PLANING) (SPECIAL)	SY	2532	791	816		4139
202-00504	REMOVAL OF EXPANSION DEVICE	LF	59				59
206-00065	STRUCTURAL BACKFILL (FLOW-FILL)	CY				15	15
403-34841	HOT MIX ASPHALT (GRADING SX) (100) (PG 76-28)	TON	275	86	89		450
509-00001	STRUCTURAL STEEL (GALVANIZED)	LB	230				230
518-01001	BRIDGE EXPANSION JOINT (ASPHALTIC PLUG)	LF	53	107			160
518-01004	BRIDGE EXPANSION DEVICE (0-4 INCH)	LF	59				59
518-03000	SAWING AND SEALING BRIDGE JOINT	LF			111		111
601-03041	CONCRETE CLASS D (BRIDGE) (SPECIAL)	CY	6				6

INDEX OF DRAWINGS

- DWG. NO. B01 GENERAL INFORMATION - SUMMARY OF QUANTITIES
- DWG. NO. B02 PLAN STR K-18-EP
- DWG. NO. B03 PLAN STR K-18-EU
- DWG. NO. B04 PLAN STR K-18-EV
- DWG. NO. B05 PLAN STR 045A007100BL
- DWG. NO. B06 BRIDGE EXPANSION DEVICE PLUG JOINT AND SAW AND SEAL DETAIL
- DWG. NO. B07 EXPANSION DEVICE REMOVAL AND REPLACEMENT K-18-EP
- DWG. NO. B08 BRIDGE EXPANSION DEVICE (0-4 INCH) (1 OF 3)
- DWG. NO. B09 BRIDGE EXPANSION DEVICE WEST RAIL (0-4 INCH) (2 OF 3)
- DWG. NO. B10 BRIDGE EXPANSION DEVICE EAST CURB (0-4 INCH) (3 OF 3)



Print Date: 2/15/2017	0000	Sheet Revisions			 Colorado Department of Transportation 902 Erie Avenue Pueblo, CO 81001 Phone: 719-562-5509 FAX: 719-546-5702 Region 2	As Constructed		GENERAL INFORMATION				Project No./Code	
Drawing File Name: 20755 01 General Information.dgn		Date:	Comments	Init.		No Revisions:		SUMMARY OF QUANTITIES				STM SH45-001	
Horiz. Scale: None Vert. Scale: None						Revised:	Designer: J. Bjorkquist	Structure Numbers	K-18-EP		20755		
Staff Bridge Branch - Unit 0226 Unit Leader DDG						Void:	Detailer: J. Bjorkquist	K-18-EU, EV		Sheet Number		81	
					Sheet Subset: Bridge	Subset Sheets: B01 of 10							