

CONCRETE EXPANSION JOINTS WILL BE REQUIRED AT 1 MILE INTERVALS. SLEEPER SLABS FOR THE CONCRETE EXPANSIONS WILL BE CLASS P CONCRETE. REINFORCING STEEL WILL BE GRADE 60 EPOXY COATED. THE COST OF THE CONCRETE, REINFORCING STEEL, AND GALVANIZED STEEL WILL NOT BE PAID FOR SEPARATELY BUT SHALL BE INCLUDED IN THE COST OF ITEM 412 CONCRETE PAVEMENT BID ITEM.

AT EACH OF THE RECONSTRUCTION EXPANSION JOINTS A PIPE EDGE DRAIN SHALL BE INSTALLED PER M-605-1 OF THE M&S STANDARD PLANS. THE EDGE DRAIN SHALL CONTINUE 2 FEET BEYOND BOTH SIDES OF THE EXPANSION JOINT AND INCLUDE A TRANSVERSE UNDERDRAIN AT EACH END ON THE EDGE DRAIN. IF THE UNDERDRAIN PIPE CANNOT DRAIN OUTSIDE OF THE ROADWAY PRISM, THE PIPE EDGE DRAIN SHALL NOT BE INSTALLED. THIS WORK SHALL NOT BE PAID FOR SEPARATELY, BUT SHALL BE INCLUDED IN THE PRICE OF ITEM 412 CONCRETE PAVEMENT.

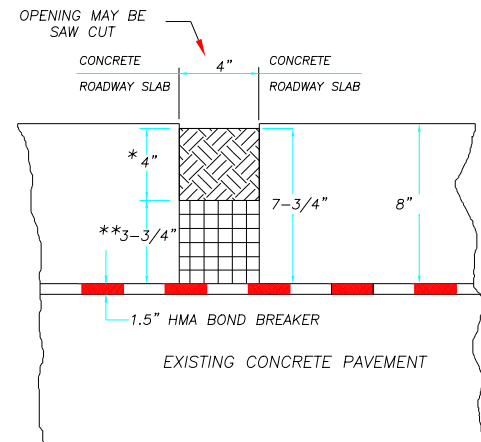
STATION +/- 50 FEET

4" X 4" OVERLAY JOINT
NOT REQUIRED

4" X 6" RECONSTRUCTION JOINT
ESTIMATED TO BE AT 10 LOCATIONS
(LOCATIONS TO BE VERIFIED IN THE
FIELD WITH THE ENGINEER)
STA 40+00 NB AND SB LANES
STA 84+00 NB AND SB LANES
STA 87+30 NB AND SB LANES
STA 143+00 NB AND SB LANES
STA 199+50 NB AND SB LANES

OVERLAY EXPANSION JOINT DETAIL

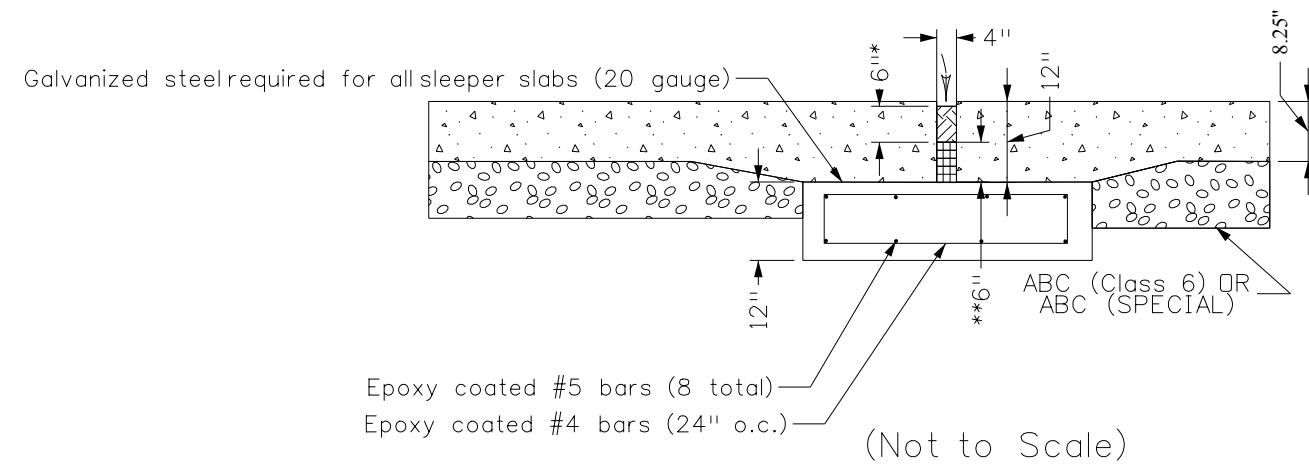
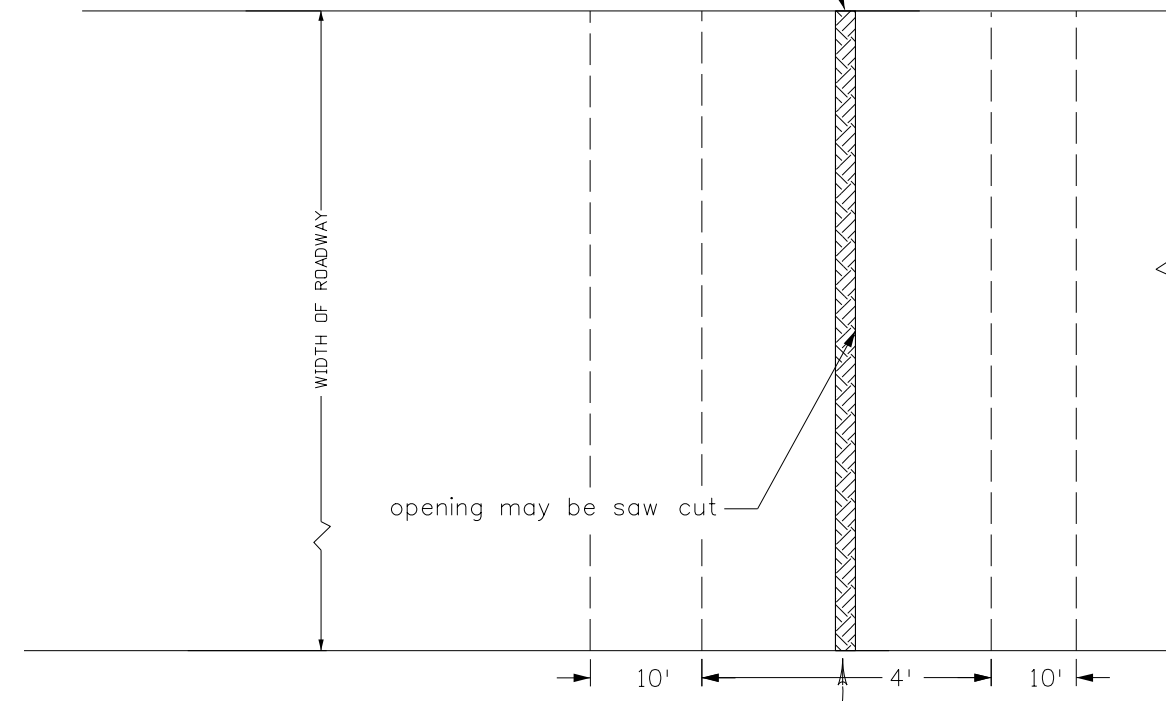
NOT TO SCALE. SECTIONS TAKEN PARALLEL TO ROADWAY



* 4" X 4" AND 4" X 6" PRECOMPRESSED CHEMICALLY RESISTANT FOAM SEALANT. COMPOSED OF OPEN CELL POLYURETHANE FOAM IMPREGNATED WITH NEOPRENE RUBBER SUSPENDED IN CHLORINATED HYDROCARBONS, SIMILAR TO WILLSEAL TYPE 150. THE COST SHALL BE INCLUDED IN THE 412 CONCRETE PAVEMENT ITEM.

** STYROFOAM OR OTHER MATERIAL AS APPROVED BY THE ENGINEER.

APPROXIMATELY 100 FEET FROM BRIDGE EXPANSION JOINT AND EVERY 1 MILE



Print Date: 3/22/2017	Sheet Revisions			Colorado Department of Transportation	As Constructed	CONCRETE COMPRESSION JOINT DETAIL			Project No./Code
File Name: 20755DES_Expansion Joint Detail.dgn	Date:	Comments	Init.		No Revisions:	JOINT DETAIL			STM SH45-001
Horiz. Scale: 1:12	Vert. Scale: As Noted			 902 Erie Avenue Pueblo, CO 81001 Phone: 719-562-5509 FAX: 719-546-5702 Region 2 DTD	Revised:	Designer: LEP	Structure Numbers	20755	
Unit Information	Unit Leader DTD				Void:	Detailer: LEP	Subset Sheets:	Sheet Number	
						Sheet Subset: DETAIL		12	