

Door & Frame Schedule

No.	Size	Type	Hand	Finish	Hardware
1	3-0 x 7-0	SC-Birch	RH	Stain-Poly	Lockset/Closer
2	3-0 x 7-0	SC-Birch	RH	Stain-Poly	Privacy/Closer
3	3-0 x 7-0	SC-Birch	LH	Stain-Poly	Privacy/Closer
4	3-0 x 6-8	SC-Birch	LH	Stain-Poly	Lockset/Closer
5	By Mfr.				
6	By Mfr.				
7	3-0 x 7-0	Storefront	LH	Clear Ano	Deadbolt/Closer
8	3-0 x 6-8	Special	--	Stainless St.	'Paylon PE 510 ALC'
9	3-0 x 6-8	Special	--	Stainless St.	'Paylon PE 510 ALC'
10	64"W x 38"H	Roll up	--	Factory	Hasp

Notes:

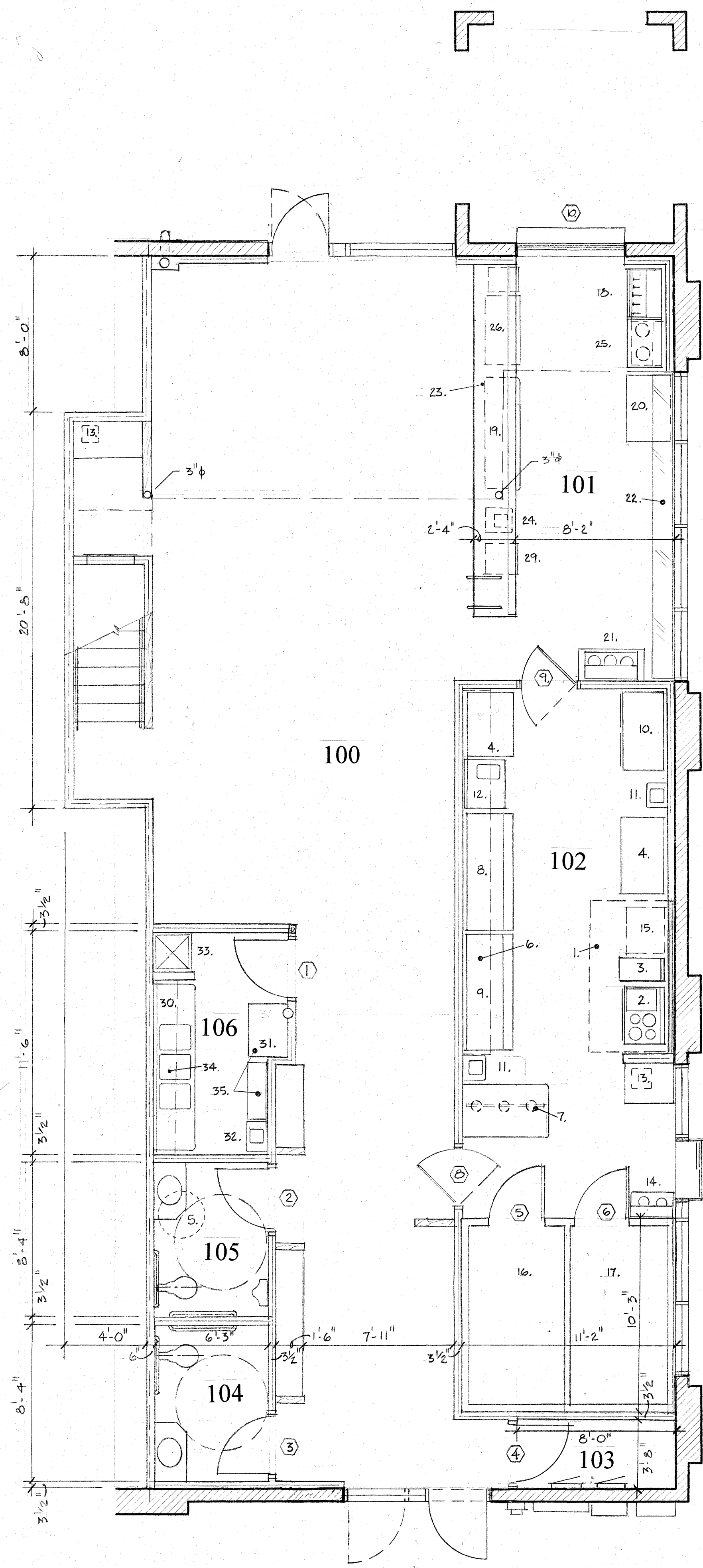
HM - Hollow Metal
 SC - Solid Core
 DB - Dead Bolt - All deadbolts are thumb-turn interior side

Room Finish Schedule

No.	Floor	Base	Walls	Ceiling	Notes
100	Conc. sealed	Vinyl	Gyp. Brd	Unfinished	Paint trusses and roof decking
101	Conc. sealed	Vinyl	Gyp. Brd	Unfinished	Gyp. Brd. ceiling and soffit per ceiling plans
102	Conc. sealed	Vinyl	Gyp. Brd/FRP	Grid/Vinyl 2x4	Extend walls to roof deck
103	Conc. sealed	None	Gyp. Brd	Unfinished	Gyp. Brd Ceiling @ +8'-0" AFF
104	Conc. sealed	Vinyl	Gyp. Brd	Gyp. Brd.	Gyp. Brd Ceiling @ +7'-8" AFF
105	Conc. sealed	Vinyl	Gyp. Brd	Gyp. Brd.	Gyp. Brd Ceiling @ +7'-8" AFF
106	Conc. sealed	Vinyl	Gyp. Brd	Unfinished	Wall Height @ +8'-4" AFF

NOTES:

1. Install stainless steel on wall below cooking hood



KITCHEN

1. Exhaust Hood with MUA and Ansul System
2. 4 Burner Range/Oven/Griddle
3. 2 basket Fryer
4. St. Steel work table
5. Water Heater
6. Storage shelves
7. Heat lamps
8. Refrigerated sandwich prep
9. Steam table
10. Reach-in Refrigerator
11. Handsink
12. Veg. Prep sink
13. P.O.S.
14. Coffee
15. Future cooking Equip.
16. Walk-in cooler
17. Walk-in freezer

BAR

18. Beer taps
19. 4 compartment sink
20. Margarita machine
21. Coffee maker
22. Back bar display shelves
23. Glass racks
24. Handsink
25. Blenders on countertop
26. Icemaker
27. Reach-in Freezer
28. P.O.S.
29. Soda Dispenser

WAREWASH

30. 3 compartment sink
31. Soda syrup and carbonation
32. Hanksink
33. Mop sink
34. Wire drying racks
35. Shelving
36. countertop

NOTES:

- A. Interior walls 2x4 wood studs @ 16" c/c. with 5/8" Type 'X' Gyp. Brd. Light orange peel finish.
- B. 2x4 wood studs @ 16" c/c. with 5/8" Type 'X' Gyp. Brd. to gyp. Brd. ceiling @ 8'-0" AFF.
- C. 2x4 Ceiling grid @ 13'-0" AFF.
- D. Washable vinyl wrapped ceiling tiles this area.
- E. Demising wall 6" wood studs @ 16" c/c. with 5/8" Type 'X' Gyp. Brd. to roof deck, one side - firetape only

anzuni design and development
 Pueblo, Colorado 81003
 ganzuni@comcast.net

719.251.6870
 807 Greenwood St., Suite 200

Lobo's
 Tacos and Tequila
 2290 Rawlings Boulevard
 Pueblo, Colorado 81001

REVISIONS

No.	Description

SHEET

A-1