

# INTERIOR REMODEL

for

# REXEL USA - Pueblo

## 737 DESERT FLOWER BOULEVARD PUEBLO, COLORADO 81001



830 N. MAIN ST., SUITE 140 • PUEBLO, CO 81003  
719-696-8249 (O)

INTERIOR REMODEL  
for  
**REXEL USA - Pueblo**  
737 DESERT FLOWER BOULEVARD  
SUITE 100  
PUEBLO, COLORADO 81001

STAMP:

ISSUE RECORD:	
OWNER CHANGES	9/5/2018
CONSTRUCTION DOCUMENTS	10/5/2018

PROJECT NUMBER:	2018-14
DRAWN BY:	RA
REVIEWED BY:	GV/SW

COVER SHEET  
**G1**

### Abbreviations

#	AND	ID	INSIDE DIAMETER
@	AT	IG	INSULATED GLAZE
#	POUND OR NUMBER	INSUL	INSULATION
ACC	ACCESSIBLE	INT	INTERIOR
ACT	ACOUSTICAL CEILING TILE	IRRIG	IRRIGATION
ADA	AMERICANS WITH DISABILITY ACT	JNT	JOINT
		JST	JOIST
ADJ	ADJUSTABLE	LAM	LAMINATED
ALUM	ALUMINUM	LAV	LAVATORY
APPROX	APPROXIMATE	MAX	MAXIMUM
ARCH	ARCHITECTURAL	MECH	MECHANICAL
BRG	BEARING	MFR	MANUFACTURER
BD	BOARD	MIN	MINIMUM
BLDG	BUILDING	MISC	MISCELLANEOUS
BLK	BLOCK	MO	MASONRY OPENING
BLKG	BLOCKING	MTD	MOUNTED
BM	BEAM	MTL	METAL
BO	BY OWNER	NIG	NOT IN CONTRACT
BTM	BOTTOM	NTS	NOT TO SCALE
CAB	CABINET	O/	OVER
CI	CAST IRON	OA	OVERALL
CLS	CEILING	OC	ON CENTER
CLO	CLOSET	OD	OUTSIDE DIAMETER
CLR	CLEAR	OPNG	OPENING
COL	COLUMN	OPP	OPPOSITE
CONC	CONCRETE	PCT	PORCELAIN TILE
CONN	CONNECTION	PL	PLATE
CONSTR	CONSTRUCTION	PLAM	PLASTIC LAMINATE
CONT	CONTINUOUS	PLYWD	PLYWOOD
COORD	COORDINATE	FR	PAIR
CORR	CORRIDOR	PT	PAINT
CB	COVE BASE	PT	POINT
CMU	CONCRETE MASONRY UNIT	RECEPT	RECEPTACLE
CPT	CARPET	RAD	RADIUS
GT	CERAMIC TILE	RB	RUBBER BASE
DBL	DOUBLE	RD	ROOF DRAIN
DTL	DETAIL	RE	REFERENCE
DIA	DIAMETER	REINF	REINFORCED
DIM	DIMENSION	REQ'd	REQUIRED
DN	DOWN	RM	ROOM
DWR	DRAINER	RO	ROUGH OPENING
DS	DRAINSPOUT	RVT	RESILIENT VINYL
DWG	DRAWING	TILE	TILE
(E) or EXIST	EXISTING	SAG	SUSPENDED
EA	EACH	SC	SEALED CONCRETE
EJ	EXPANSION JOINT	SC	SOLID CORE
ELEC	ELECTRICAL	SCHED	SCHEDULE
ELEV	ELEVATION	SECT	SECTION
EMER	EMERGENCY	SF	STORE FRONT
ENCL	ENCLOSURE	SHT	SHEET
EP	EPOXY	SHT MTL	SHEET METAL
EPT	EPOXY PAINT	SHTG	SHEATHING
EQ	EQUAL	SIM	SIMILAR
EQPT	EQUIPMENT	SOL	SOLID SURFACE
EXIST	EXISTING	SPEC	SPECIFICATION
EXP	EXPANSION	SQ	SQUARE
EXT	EXTERIOR	SS	STAINLESS STEEL
FA	FIRE ALARM	STD	STANDARD
FD	FLOOR DRAIN	STL	STEEL
FND	FOUNDATION	STOR	STORAGE
FE	FIRE EXTINGUISHER	STRUC	STRUCTURAL
FF	FACTORY FINISH	SUSP	SUSPENDED
FFE	FINISHED FLOOR	SV	SHEET VINYL
		SYM	SYMMETRICAL
FG	FLOAT GLAZE	TEL	TELEPHONE
FIN	FINISH	TER	TERRAZZO
FL	FLOOR	T&G	TONGUE AND GROOVE
FLUOR	FLUORESCENT	THK	THICK
FOB	FACE OF BLOCK	TV	TELEVISION
FOC	FACE OF CONCRETE	TOW	TOP OF WALL
FOF	FACE OF FINISH	TYP	TYPICAL
FOS	FACE OF STUDS	TO	TOP OF
FRP	FIBERGLASS REINFORCED PLASTIC	TOP	TOP OF PARAPET
FT	FOOT OR FEET	UNO	UNLESS NOTED OTHERWISE
FTG	FOOTING	VERT	VERTICAL
FURR	FURRING	VEST	VESTIBULE
FV	FIELD VERIFY	VTR	VENTILATING VENT THRU ROOF
GA	GAUGE	W	WITH
GALV	GALVANIZED	WC	WATER CLOSET
GC	GENERAL CONTRACTOR	WO	WOOD
GL	GLASS	WO	WITHOUT
GRD	GRADE	WP	WATERPROOF
GYP BD	GYPSUM BOARD	WR	WATER RESISTANT
GB	GYPSUM BOARD	WR&B	WATER RESISTANT GYPSUM BOARD
GI	GALVANIZED IRON	WSCT	WAINSCOT
HB	HOSE BIB	WT	WEIGHT
HC	HOLLOW CORE		
HDWD	HARDWOOD		
HDWR	HARDWARE		
HM	HOLLOW METAL		
HORIZ	HORIZONTAL		
HT	HEIGHT		

### General Notes

- ALL WORK CALLED FOR IN THESE PLANS SHALL BE EXECUTED WITH EXTREME CONCERN FOR CRAFTSMANSHIP AND SAFETY IN FULL ACCORDANCE WITH THE ADOPTED CODES AND ORDINANCES OF THE GOVERNING AGENCY IN WHICH THIS PROJECT IS BEING CONSTRUCTED.
- ALL WORK, WHETHER SPECIFICALLY CALLED FOR OR NOT, SHALL BE CONSTRUCTED UNDER THE LATEST CODES AND ORDINANCES AS ADOPTED BY GOVERNING AGENCY.
- THE GENERAL CONTRACTOR SHALL THOROUGHLY FAMILIARIZE HIMSELF WITH THESE DOCUMENTS PRIOR TO PROCEEDING WITH ANY CONSTRUCTION AND SHALL REPORT ANY DISCREPANCIES TO THE ARCHITECT PRIOR TO COMMENCING WITH ANY WORK. SHOULD ANY DEVIATIONS BE MADE TO THESE PLANS WITHOUT WRITTEN CONSENT FROM THE ARCHITECT, THE OWNER / GENERAL CONTRACTOR SHALL ASSUME ALL RESPONSIBILITY FOR SUCH DEVIATION(S).
- INFREQUENT SITE VISITS BY THE ARCHITECT IN NO WAY ALLEVIATES THE GENERAL CONTRACTOR'S RESPONSIBILITY IN REGARDS TO CODE COMPLIANCE, SAFETY AND THOROUGHNESS.
- ALL SUBCONTRACTORS SHALL VISIT JOB SITE WITHIN 24 HOURS PRIOR TO COMMENCING WITH WORK. THE SUBCONTRACTOR TO BE RESPONSIBLE FOR REVIEWING RELATED TRADES SUBSURFACE PREPARATION AND SHALL REPORT ANY NON-CONFORMING DISCREPANCY TO THE GENERAL CONTRACTOR. EXECUTION OF WORK BY ANY SUBCONTRACTOR INDICATES ACCEPTANCE OF PREVIOUS TRADES WORK.
- THE OWNER AGREES TO HOLD HARMLESS, INDEMNIFY AND DEFEND THE ARCHITECT, HIS EMPLOYEES AND CONSULTANTS AGAINST ANY AND ALL LIABILITY, CLAIMS, DAMAGES AND COST OF DEFENSE ARISING OUT OF THE ERRORS AND OMISSIONS, OR NEGLIGENT ACTS CAUSED BY THE UNAUTHORIZED MODIFICATIONS TO THESE PLANS.
- ANY CHANGE (S), MODIFICATION (S), OR ALTERATION (S) TO THESE PLANS SHALL BE AT THE SOLE RISK OF PERSON (S) MAKING OR CAUSING THE SAME.
- THE ARCHITECT AND ARCHITECT'S CONSULTANTS SHALL HAVE NO RESPONSIBILITY FOR THE DISCOVERY, PRESENCE, HANDLING, REMOVAL AND DISPOSAL OF OR EXPOSURE OF PERSONS TO HAZARDOUS MATERIALS IN ANY FORM AT THE PROJECT SITE, INCLUDING BUT NOT LIMITED TO ASBESTOS, ASBESTOS PRODUCTS, POLYCHLORINATED BIPHENYL (PCB) OR OTHER TOXIC SUBSTANCES.

### Symbol Legend

	= EMERGENCY EGRESS DOOR
	= PORTABLE FIRE EXTINGUISHER, w/BACKET or w/CABINET, 10# TYPE ABC
	= ELEVATION DATUM
	= EXTERIOR ELEVATION CALLOUT
	= SECTION CALLOUT
	= DETAIL CALLOUT
	= INTERIOR ELEVATION
	= DEMOLITION KEYNOTE, EQUIPMENT CALLOUT, STANDARD KEYNOTE
	= DOOR CALLOUT, WINDOW CALLOUT, ROOM CALLOUT, WALL TYPE TAG
<b>FLOOR PLAN</b>	= SHEET TITLE
	= DETAIL TITLE

### Sheet Index

<b>GENERAL</b>	
G1	COVER SHEET
G2	CODE SHEET
<b>ARCHITECTURAL</b>	
D1	DEMOLITION FLOOR PLAN
A1	ARCHITECTURAL SITE PLAN
A2	FLOOR PLANS
A3	REFLECTED CEILING PLAN
A4	INTERIOR FINISH PLAN
<b>ELECTRICAL</b>	
EO.1	SCHEDULES AND LEGENDS
E1.1	ELECTRICAL DEMOLITION PLAN
E2.1	NEW WORK LIGHTING PLAN
E3.1	NEW WORK POWER PLAN
E4.1	SINGLE LINE DIAGRAM AND PANEL SCHEDULES

### Project Description

This Project consists of the demolition of existing dressing rooms, approximately 250 sf, creating a larger sales floor. New slat-wall covering for product display will be included in the new sales area. New IT will be designed for the existing offices. New ceiling tiles will be required in several areas due to age and damage. New lighting layout in the Warehouse will be arranged to accommodate the new racking provided by a separate contractor under the Owner. New paint and flooring will be included throughout office area.

### Legal Description

LOT 3 BLK 51 UNIVERSITY PARK SUB 15TH  
FORMERLY #04180-00-001, 04181-22-001 + 002

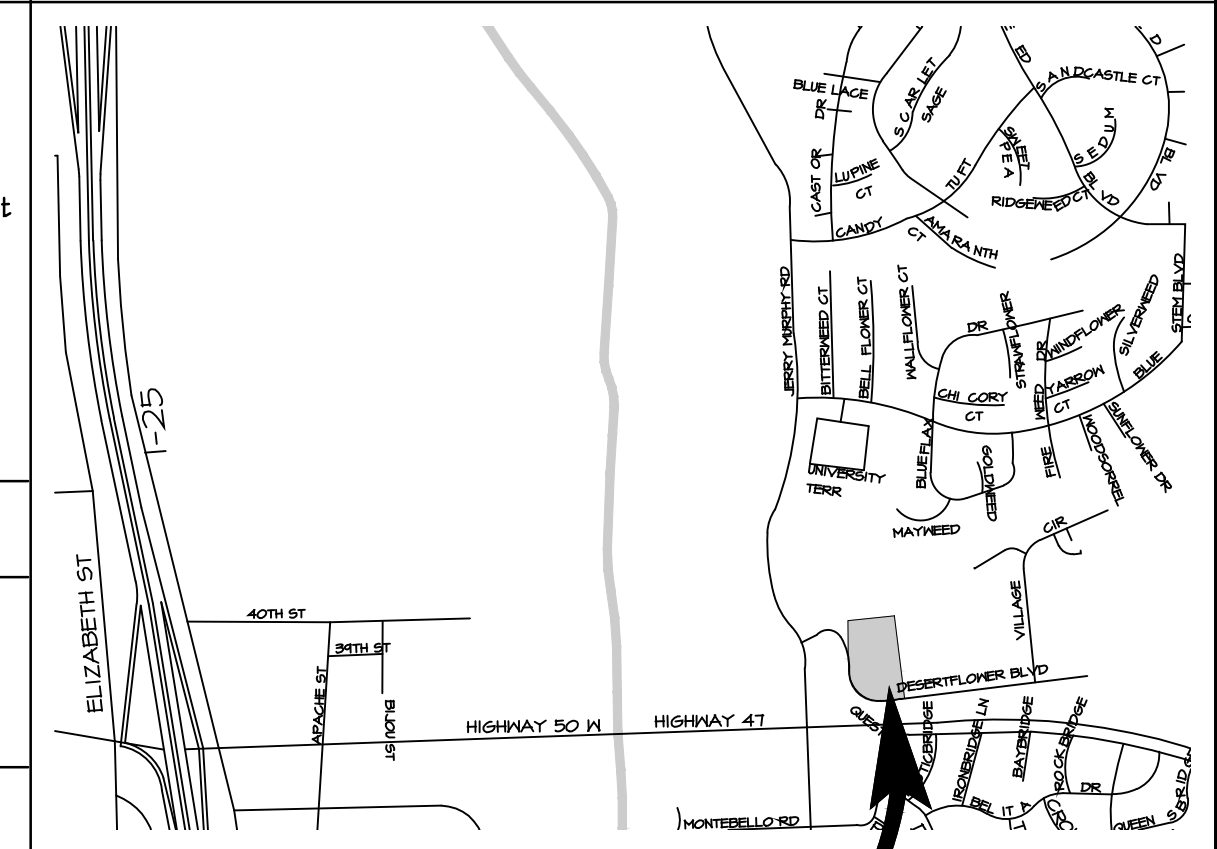
### Consultants / Contacts

**Owner:**  
REXEL USA, INC.  
14451 Dallas Parkway  
Dallas, Texas 75254  
972-419-8721

**Architect:**  
Weidner & Associates, LLC  
Steve Weidner, RA  
830 North Main Street  
Suite 140  
Pueblo, CO 81003  
719-696-8249  
Steve@WeidnerAndAssociates.net

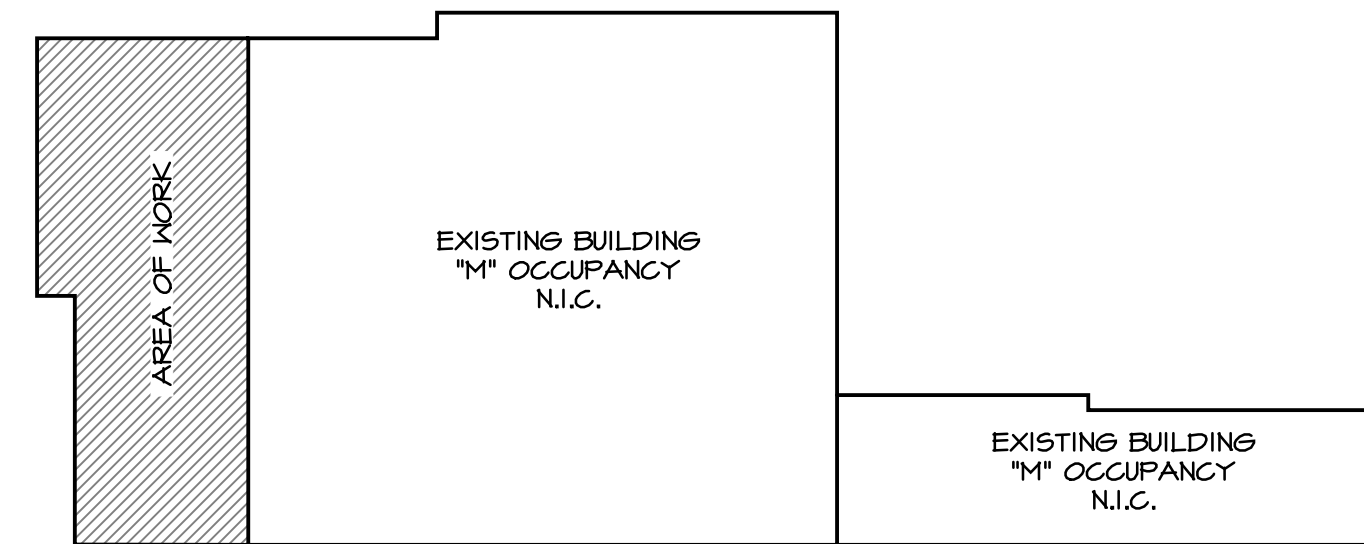
**Electrical Engineer:**  
Kohmert Electrical Engineers, INC.  
Mike Kohmert, PE  
911 South 8th Street  
Suite 200  
Colorado Springs, CO 80905  
1-719-633-2637  
email@kohmertee.com

### Vicinity Map

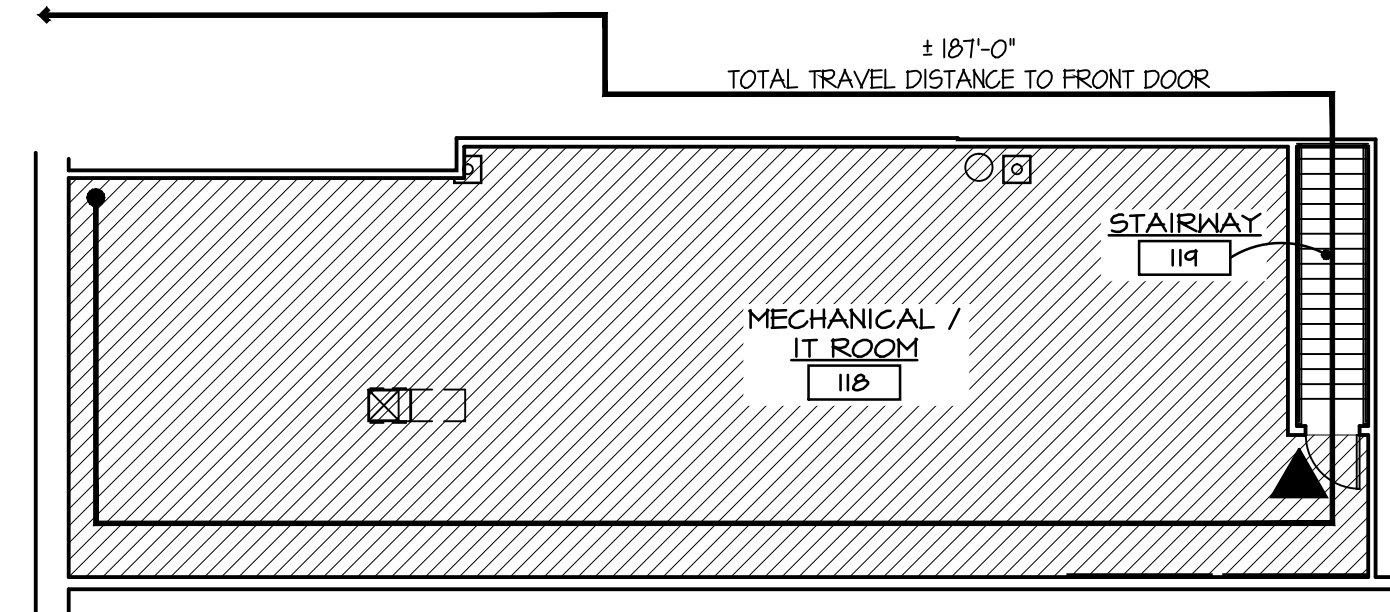


**SITE**

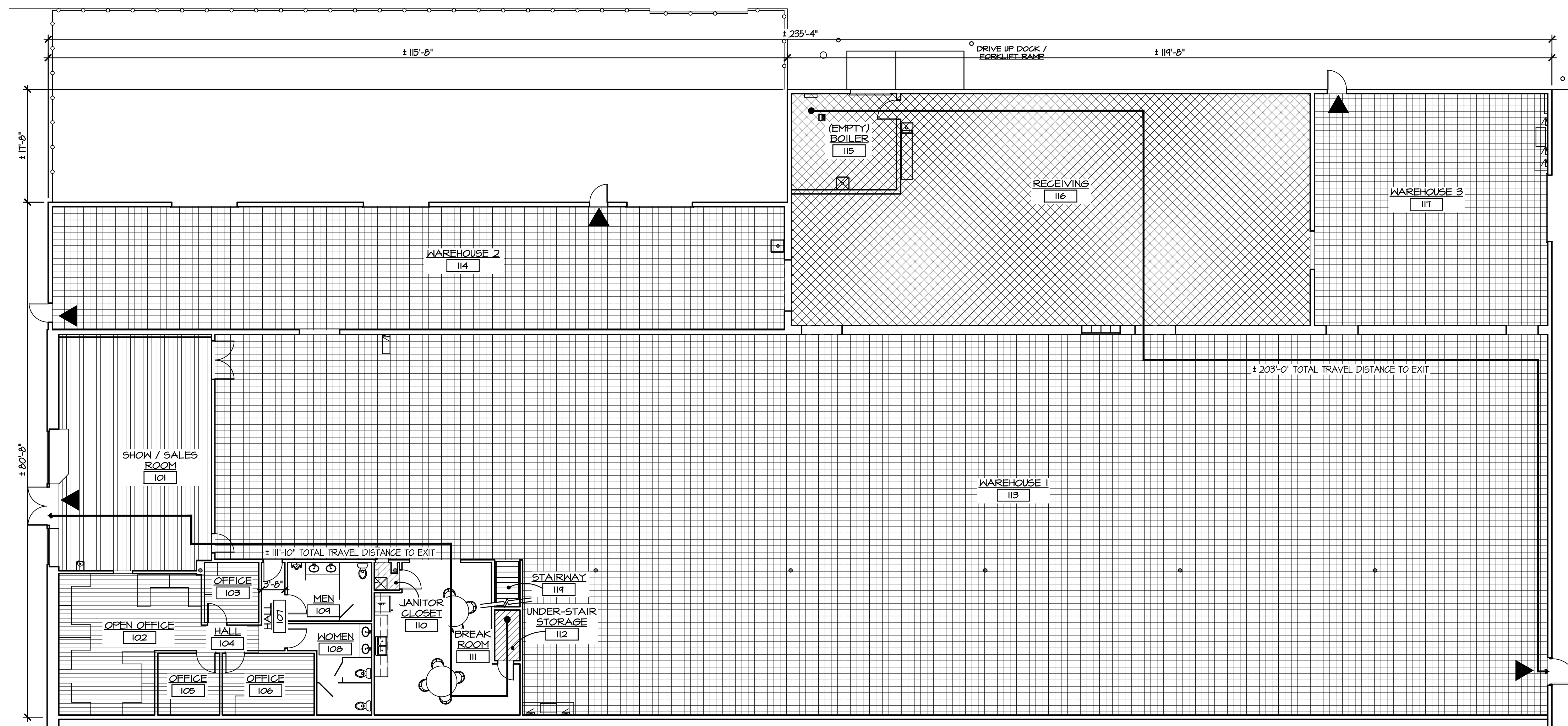




**KEY PLAN**  
N.T.S. NORTH



**UPPER FLOOR PLAN**  
3/32" = 1'-0" NORTH



**FLOOR PLAN**  
3/32" = 1'-0" NORTH

**ADOPTED BUILDING CODES:**

International Building Code:	2015
International Existing Building Code:	2015
National Electrical Code:	2014
International Mechanical Code:	2015
International Plumbing Code:	2015
International Fire Code:	2015
International Energy Conservation Code:	2015

**BUILDING CODE COMPLIANCE:**

Building Occupancy ( IBC Section 309.1 )	M
Construction Type ( IBC Section 602.5 )	Type V-B
Height and Area	
Height ( Table 504.3 )	7'
Height ( Table 504.4 )	2
Fire Sprinklers	Yes
Exits Required ( IBC Table 1006.3.1 )	2
Exits Provided	5 Total
Exit Access Travel Distance Allowed ( IBC Table 1017.2 )	250 Feet
Corridors Rating Required ( IBC Table 1020.1 )	0 Hour
Dead End Corridors Distance ( IBC Section 1020.4 Ex. 2 )	50 feet

**ALLOWABLE AREA INCREASE:**

Total Increased Allowable Area:	14,670 sf
Allowable Area ( IBC 506.2 )	9,000 sf
Frontage Distance ( W ) ( IBC Section 506.3.2 ):	30 feet
Increase Factor ( 1 ) ( IBC Equation 5-5 ):	0.63

**OCCUPANT LOAD CALCULATIONS:**  
ADDITION - IBC 2015 TABLE 1004.1.2

Space Type / S.F. per Occupant	Area / Occupancy
Accessory Storage / Mechanical Rooms - 300 g	1,662.0 sf / 5.5 Occ
Business - 100 g	791.8 sf / 7.9 Occ
Mercantile Sales - 60 g	869.1 sf / 14.5 Occ
Mercantile Storage / Shipping - 300 g	2,945.7 sf / 9.8 Occ
Warehouse - 500 g	14,789.8 / 29.6 Occ
<b>Total Occupant Load:</b>	<b>68 (67.3) Occupants</b>

**FIRE-RESISTANCE RATINGS:**  
IBC 2015 TABLE 601 ( V-B Const. Type )

Primary Structural Frame	0 hour
Bearing Walls	
Exterior	0 hour
Interior	0 hour
Nonbearing Walls and Partitions	See 602 Below
Exterior	
Interior	0 hour
Roof Construction and Secondary Members	0 hour
Roof Construction and Secondary Members	0 hour
IBC 2015 TABLE 602	
Fire Separation Distance "X" >= 30 feet	0 hour

**PLUMBING FIXTURE COUNT:**

<b>TOTAL BUILDING</b>	
Total Occupants	68
Male / Female	34 Each Sex
Fixture Count ( IBC Table 2902.1 )	
Total Required Fixtures Men	WC = 1
WC = 1	WC = 1
Lav. = 1	Lav. = 1
Total Required Other Fixtures:	
Drinking Fountains =	1
Other =	1 Service Sink
Total Provided Fixtures: (Existing)	
Men:	WC = 2
WC = 1 Um. = 1	WC = 2
Lav. = 2	Lav. = 2
Total Provided Other Fixtures: (Existing)	
Drinking Fountains =	1
Service / Other Sinks =	1 Service Sink 1 Utility Sink 1 Kitchen Sink

**"M" - Mercantile - 34 Occupants Each Sex**

WC = 1 / 500 = 1
( 34 / 500 = 0.1 )
Lav. = 1 / 750 = 1
( 34 / 750 = 0.1 )
Other Fixtures
Drinking Fountains = 1 / 1,000 = 1
( 68 / 1,000 = 0.1 )
Other = 1 Service Sink

**CONSULTANTS:**



830 N. MAIN ST., SUITE 140 • PUEBLO, CO 81003  
719-696-8248 (O)

**INTERIOR REMODEL**  
for  
**REXEL USA - Pueblo**  
737 DESERT FLOWER BOULEVARD  
SUITE 100  
PUEBLO, COLORADO 81001

**STAMP:**

**ISSUE RECORD:**  
OWNER CHANGES 9/5/2018  
CONSTRUCTION DOCUMENTS 10/5/2018

PROJECT NUMBER: 2018-14  
DRAWN BY: RA  
REVIEWED BY: GV/SW

CONSULTANTS:

**WEIDNER & ASSOCIATES, LLC**  
**ARCHITECTURE**  
830 N. MAIN ST., SUITE 140 • PUEBLO, CO 81003  
719-686-8248 (O)

INTERIOR REMODEL  
for  
**REXEL USA - Pueblo**  
737 DESERT FLOWER BOULEVARD  
SUITE 100  
PUEBLO, COLORADO 81001

STAMP:

ISSUE RECORD:  
OWNER CHANGES 9/5/2018  
CONSTRUCTION DOCUMENTS  
10/5/2018

PROJECT NUMBER: 2018-14  
DRAWN BY: RA  
REVIEWED BY: S. Weidner

DEMOLITION  
PLAN  
**D1**

- DEMOLITION NOTES:**
1. REMOVE DOORS AND FRAMES
  2. REMOVE WALLS
  3. REMOVE EXISTING WALL FOR NEW 6'-0"x1'-0" H.M. FRAME AND HD DOORS.
  4. REMOVE EXISTING DUCTWORK, CAP SUPPLY AND RETURN OPENINGS. RTU TO REMAIN.
  5. COORDINATE LIGHT FIXTURES w/ ELECTRICAL PLANS.
  6. REMOVE RUBBER BASE AND FLOORING THROUGHOUT. PREPARE FOR NEW RUBBER BASE AND FLOORING.
  7. EXISTING RUBBER BASE AND FLOORING TO REMAIN.

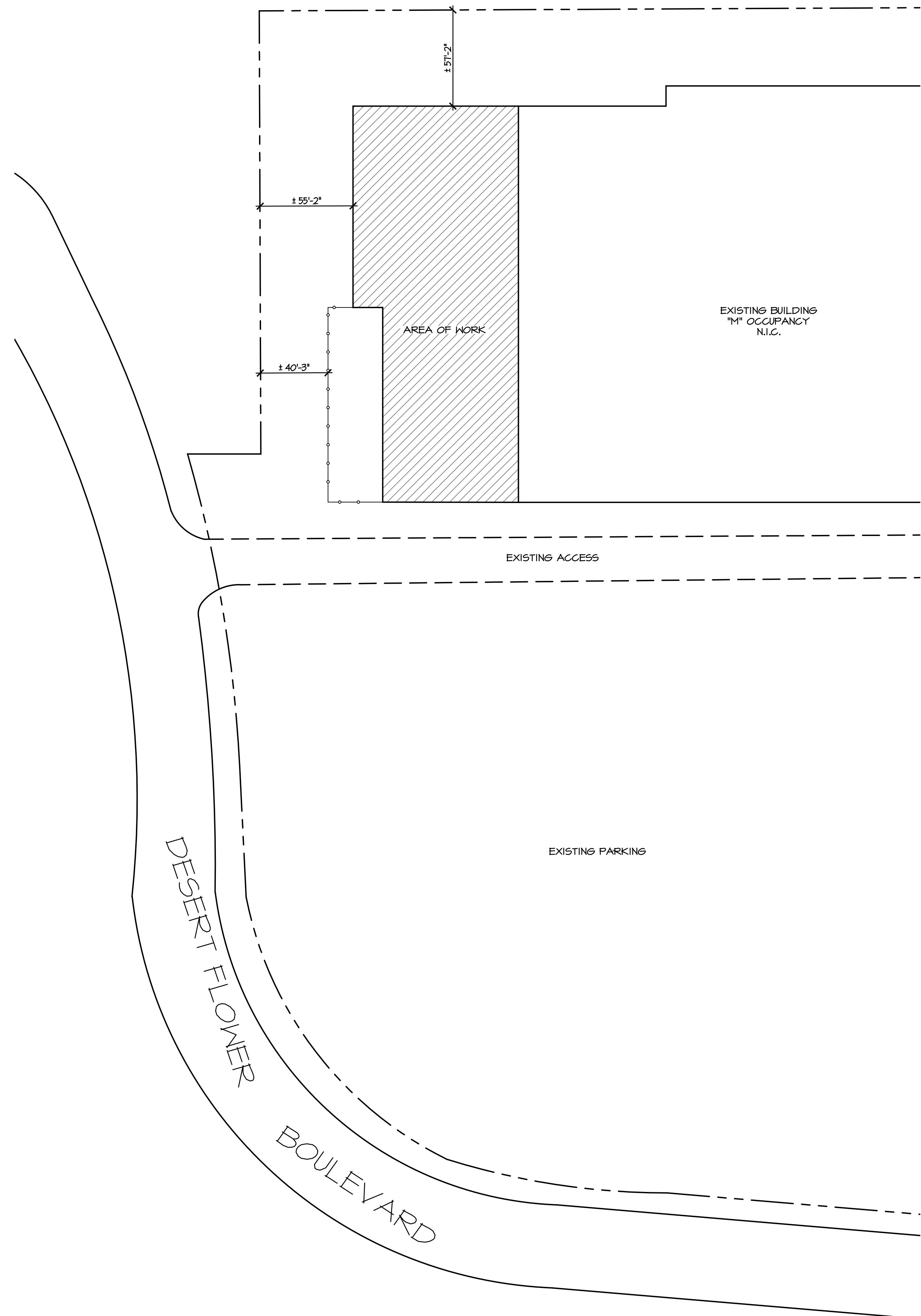
**WAREHOUSE 2  
DEMOLITION RCP**  
1/8"=1'-0"  
NORTH

**DEMOLITION FLOOR PLAN**  
1/8"=1'-0"  
NORTH

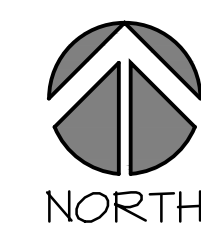
- EXISTING LVT FLOORS
- EXISTING CARPET FLOORS
- EXISTING VCT

2018-14\_2-Demo.dwg  
10/8/2018





**SITE PLAN**  
1:40



CONSULTANTS:



830 N. MAIN ST., SUITE 140 • PUEBLO, CO 81003  
719-686-8249 (O)

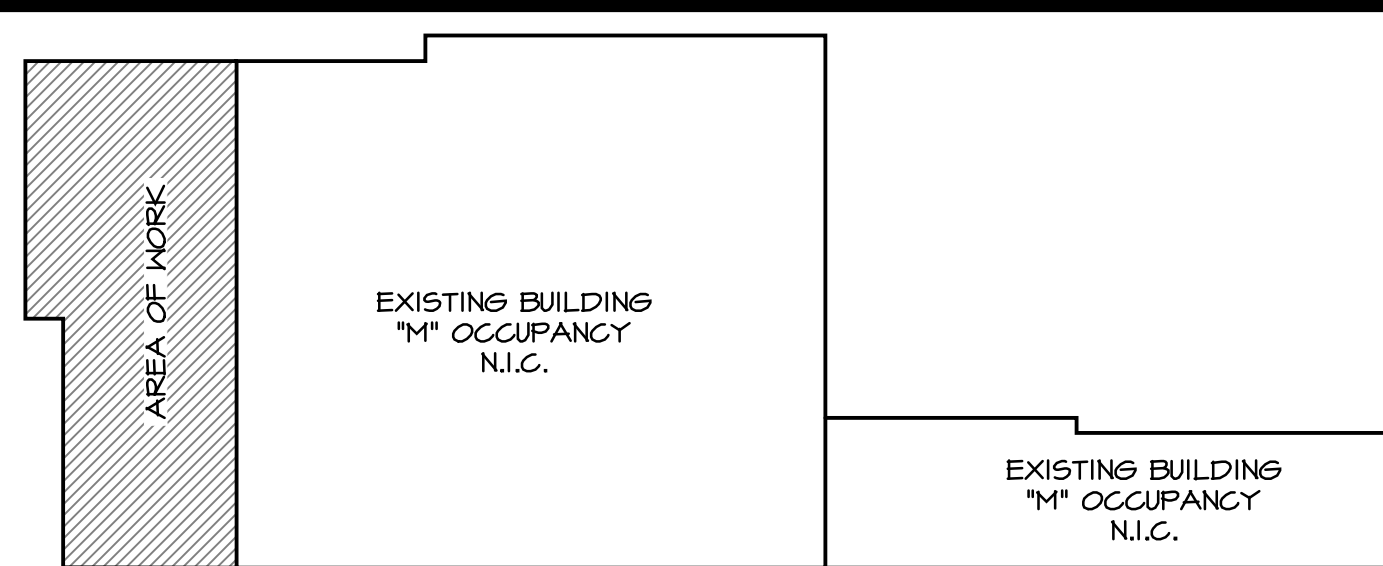
INTERIOR REMODEL  
for  
**REXEL USA - Pueblo**  
737 DESERT FLOWER BOULEVARD  
SUITE 100  
PUEBLO, COLORADO 81001

STAMP:

ISSUE RECORD:	
OWNER CHANGES	9/5/2018
CONSTRUCTION DOCUMENTS	10/5/2018

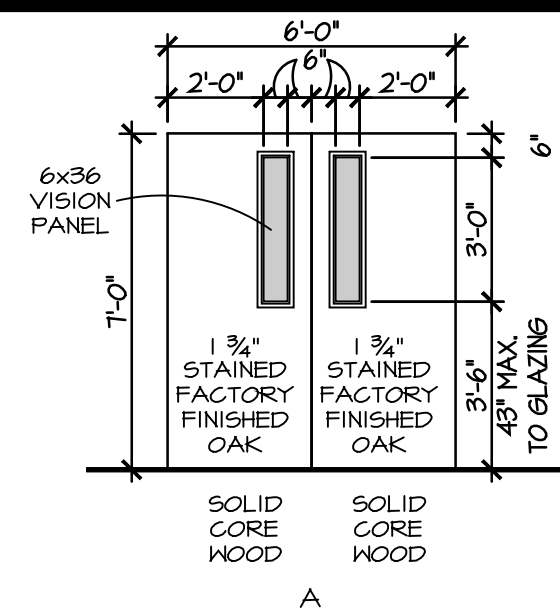
PROJECT NUMBER: 2018-14  
DRAWN BY: RA  
REVIEWED BY: GV/SW

ARCHITECTURAL  
SITE PLAN  
**A1**

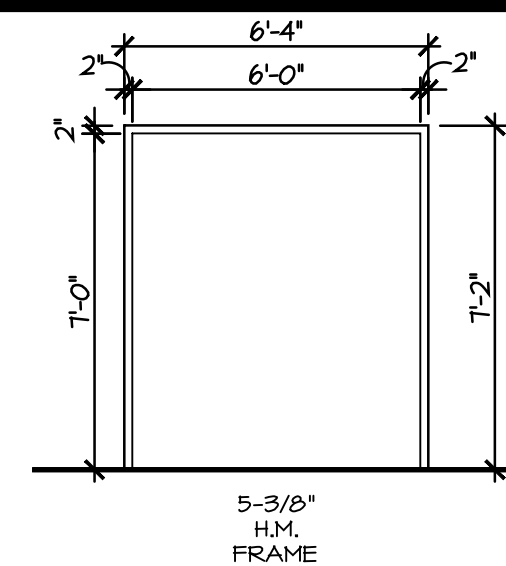


**KEY PLAN**  
N.T.S.

NORTH



**DOOR ELEVATION**  
1/4" = 1'-0"

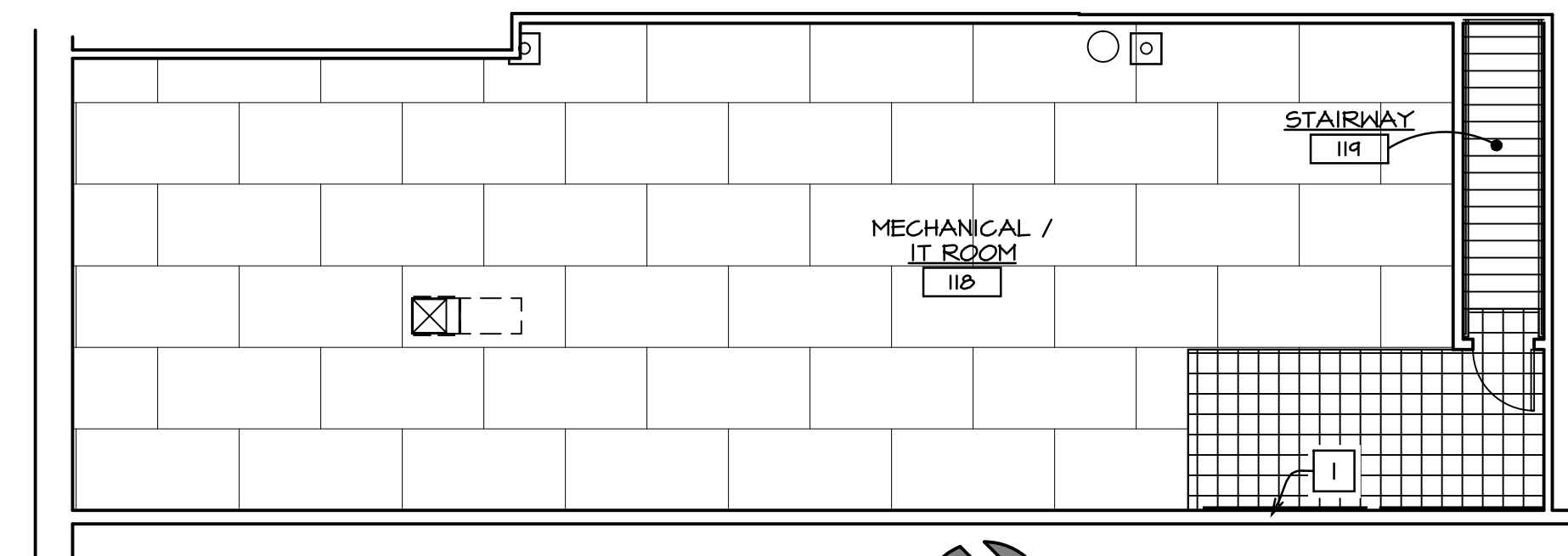


**DOOR FRAME**  
1/4" = 1'-0"

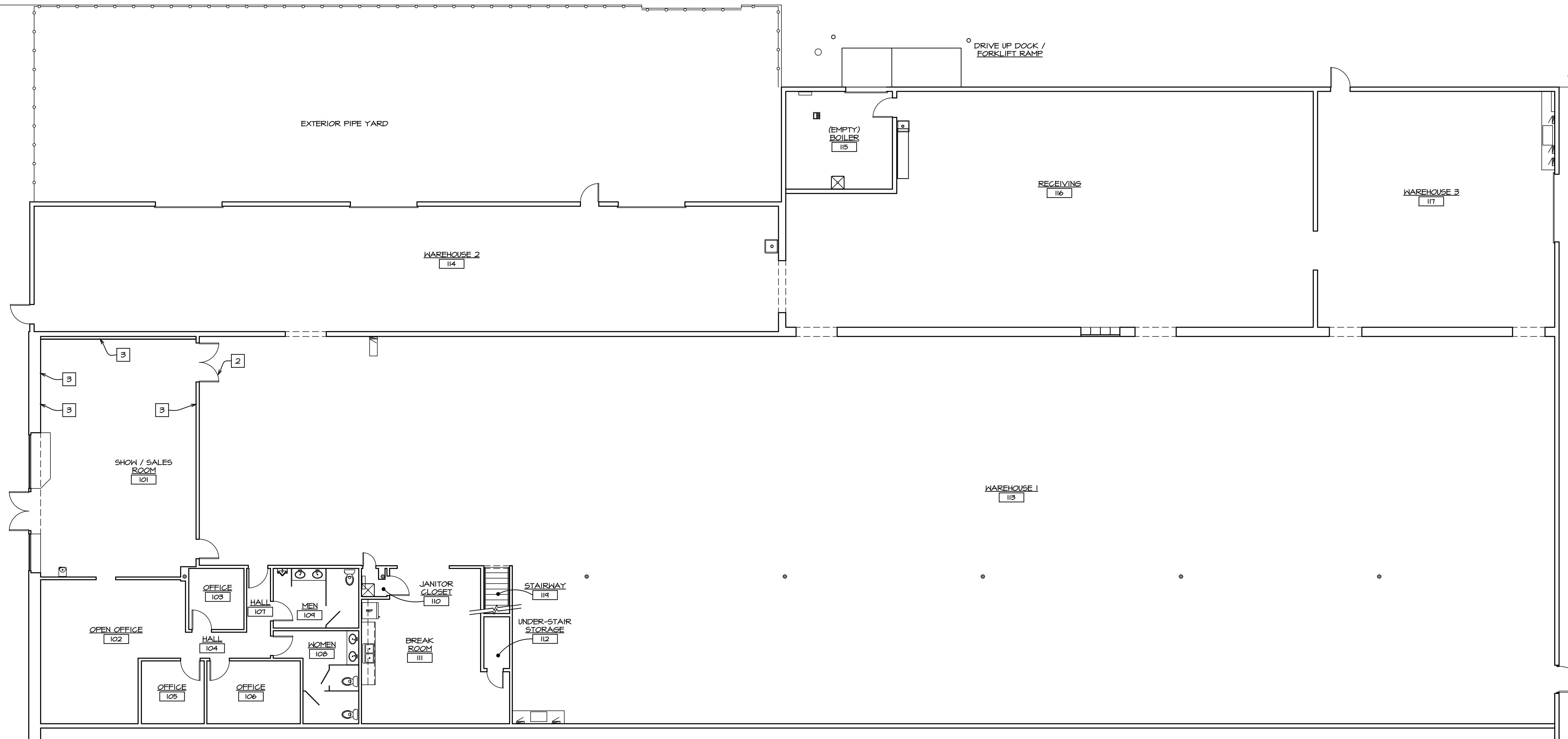
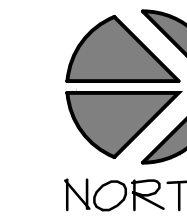
**DOOR HARDWARE:**  
PROVIDE HINGES, LGN CLOSER, SILENCERS, HEAD AND FOOT BOLTS, AND LATCH-SET TO MATCH EXISTING.

**CONSTRUCTION NOTES:**

1. NEW 4x4 PLY. WD. PHONE/IT BOARD ADJACENT TO EXISTING BOARD.
2. NEW 60TO H.M. FRAME AND WD DOOR.
3. PATCH G.B. WHERE WALLS WERE REMOVED. (TYP)



**UPPER FLOOR PLAN**  
1/8" = 1'-0"



**FLOOR PLAN**  
1/8" = 1'-0"



CONSULTANTS:



830 N. MAIN ST., SUITE 140 • PUEBLO, CO 81003  
719-686-8248 (O)

INTERIOR REMODEL  
for  
**REXEL USA - Pueblo**  
737 DESERT FLOWER BOULEVARD  
SUITE 100  
PUEBLO, COLORADO 81001

STAMP:

**ISSUE RECORD:**  
OWNER CHANGES 9/5/2018  
CONSTRUCTION DOCUMENTS 10/5/2018

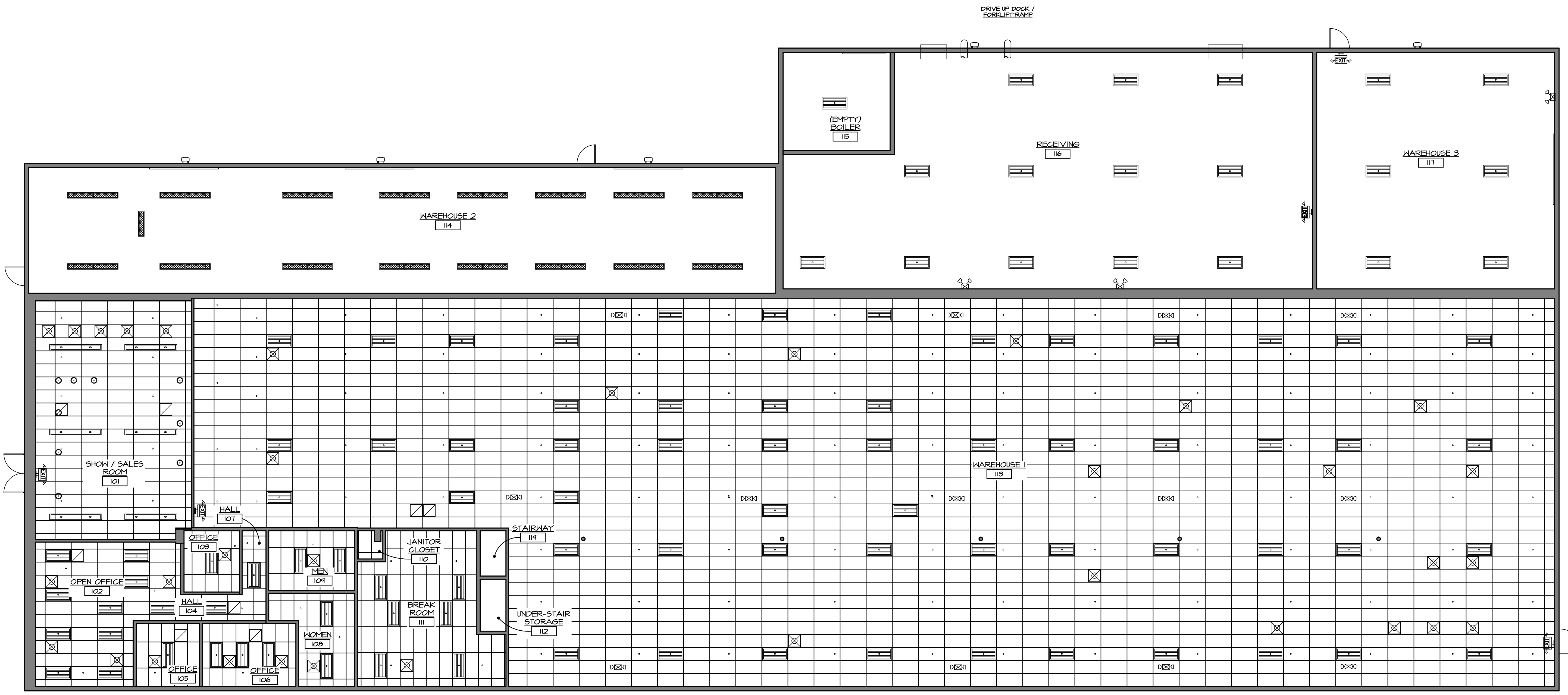
PROJECT NUMBER: 2018-14  
DRAWN BY: RA  
REVIEWED BY: GV/SW

FLOOR PLANS  
**A2**

**GENERAL NOTES:**

1. ADJUST FIRE SPRINKLER HEAD LOCATIONS IN REMODELED AREAS TO MEET NFPA-13 REQUIREMENTS.
2. REUSE EXISTING CEILING TILES IF CLEAN AND UNDAMAGED. OTHERWISE, PROVIDE NEW CEILING TILES THAT MATCH EXISTING TILES OR AS CLOSE AS POSSIBLE. VERIFY ACCEPTANCE WITH OWNER.

DRAWING LEGEND	
	EXISTING EXTERIOR HALL PACK
	EXISTING 2x4 RECESSED TROFFER OR 2x4 SUSPENDED TROFFER
	PENDANT FIXTURE
	4' FLUORESCENT FIXTURE
	8' SUSPENDED FIXTURE
	SUPPLY AIR DIFFUSER
	RETURN AIR GRILLE
	SUSPENDED ACOUSTICAL CEILING SYSTEM
	EXIT SIGN WITH EMERGENCY LIGHTING (ARROW DENOTES DIRECTION OF TRAVEL)
	EMERGENCY LIGHTING ONLY
	EMERGENCY LIGHTING ONLY



**REFLECTED CEILING PLAN**  
1/8"=1'-0"  
NORTH

CONSULTANTS:

**W&A**  
**WEDNER & ASSOCIATES, LLC**  
**ARCHITECTURE**  
830 N. MAIN ST., SUITE 140 • PUEBLO, CO 81003  
719-686-8249 (O)

INTERIOR REMODEL  
for  
**REXEL USA - Pueblo**  
737 DESERT FLOWER BOULEVARD  
SUITE 100  
PUEBLO, COLORADO 81001

STAMP:

ISSUE RECORD:	
OWNER CHANGES	9/5/2018
CONSTRUCTION DOCUMENTS	10/5/2018

PROJECT NUMBER: 2018-14  
DRAWN BY: RA  
REVIEWED BY: GV/SW

REFLECTED  
CEILING  
PLAN  
**A3**

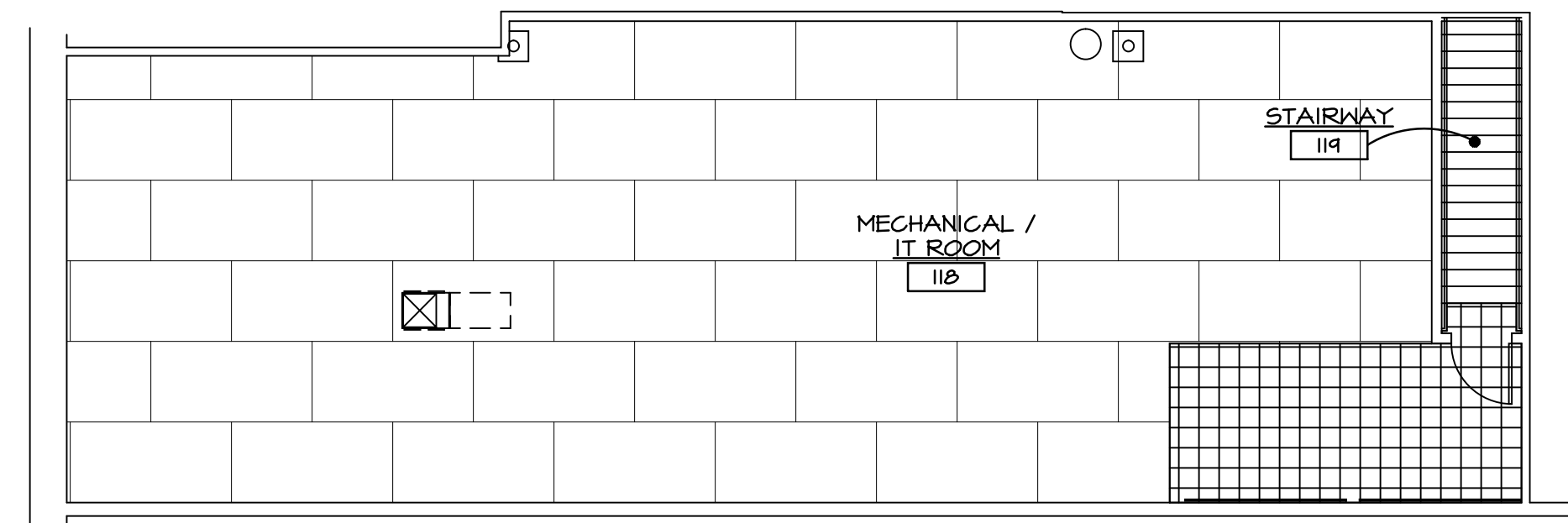


SCHEDULE OF MATERIALS AND FINISHES

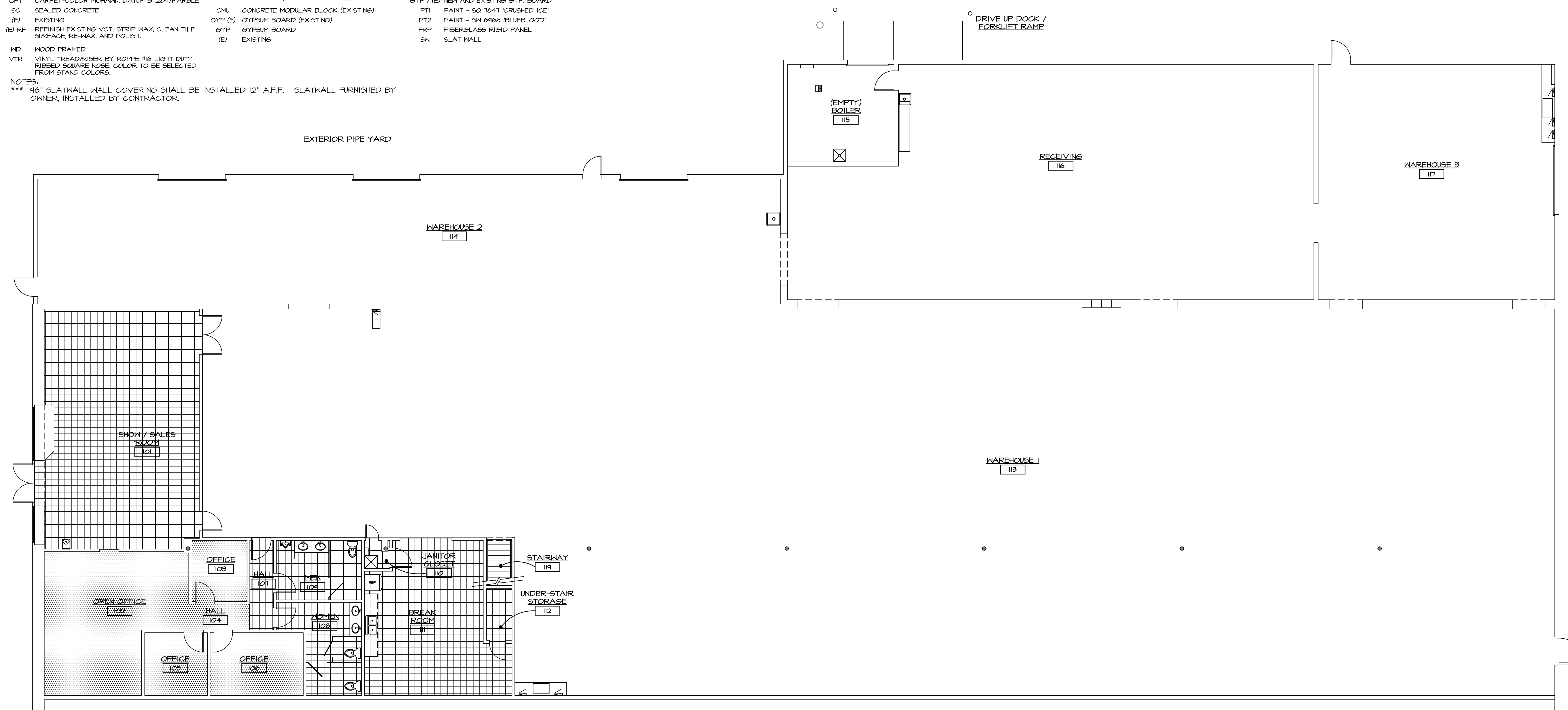
RM NO.	ROOM NAME	FLOOR		BASE		WALLS								CEILING		REMARKS	RM NO.	
		MAT	FIN	MAT	FIN	NORTH	EAST	SOUTH	WEST	MAT	FIN	HT						
101	SALES / SHOW ROOM	CONC	VCT	GYP (E)	RBI	GYP/GYP(E)	PT2/SW	GYP(E)	PTI/SW	GYP(E)	PTI/SW	GYP(E)	PTI/SW	ACT/ACT(E)	--	± 14'-0"	***	101
102	OPEN OFFICE	CONC	CPT	GYP (E)	RBI	GYP (E)	PT1	GYP (E)	PTI	GYP (E)	PT2	GYP (E)	PTI	ACT/ACT(E)	--	8'-0"	--	102
103	OFFICE	CONC	CPT	GYP (E)	RBI	GYP	PT2	GYP	PTI	GYP	PTI	GYP	PTI	ACT(E)	--	8'-0"	--	103
104	HALL	CONC	CPT	GYP (E)	RBI	--	--	GYP	PTI	--	--	GYP	PTI	ACT(E)	--	8'-0"	--	104
105	OFFICE	CONC	CPT	GYP (E)	RBI	GYP	PT1	GYP	PTI	GYP	PT2	GYP	PTI	ACT(E)	--	8'-0"	--	105
106	OFFICE	CONC	CPT	GYP(E)	RBI	GYP	PT2	GYP	PTI	GYP	PT1	GYP	PTI	ACT(E)	--	8'-0"	--	106
107	HALL	CONC	(E) RF	GYP(E) / CMU(E)	(E)	GYP	PT1	GYP	PTI	GYP	PTI	CMU	PTI	ACT(E)	--	8'-0"	--	107
108	WOMEN	CONC	(E) RF	GYP (E)	(E)	GYP/FRP(E)	--	GYP/FRP(E)	--	GYP/FRP(E)	--	GYP/FRP(E)	--	ACT(E)	--	8'-0"	--	108
109	MEN	CONC	(E) RF	GYP (E)	(E)	GYP/FRP(E)	--	GYP/FRP(E)	--	GYP/FRP(E)	--	GYP/FRP(E)	--	ACT(E)	--	8'-0"	--	109
110	JANITOR CLOSET	CONC	(E)	GYP (E)	(E)	GYP/FRP(E)	--	GYP/FRP(E)	--	GYP/FRP(E)	--	GYP/FRP(E)	--	ACT(E)	--	8'-0"	--	110
111	BREAK ROOM	CONC	(E) RF	GYP (E)	(E)	GYP (E)	PT2	GYP (E)	PTI	GYP (E)	PT1	GYP (E)	PTI	ACT(E)	--	8'-0"	--	111
112	STORAGE	CONC	(E) RF	GYP (E)	(E)	GYP (E)	--	GYP (E)	--	GYP (E)	--	GYP (E)	--	ACT(E)	--	8'-0"	--	112
113	WAREHOUSE 1	CONC	--	GYP(E) / CMU(E)	RB2	CMU	--	GYP/FRP(E)	--	GYP/FRP(E)	--	CMU	--	ACT(E)	--	± 14'-0"	--	113
114	WAREHOUSE 2	CONC	--	CMU (E)	RB2	CMU	--	CMU	--	GYP/FRP(E)	--	GYP/FRP(E)	--	OPEN	--	± 9'-5"	BOTTOM OF BEAM	114
115	BOILER ROOM (EMPTY)	CONC	--	CMU (E)	(E)	GYP	--	GYP	--	CMU	--	CMU	--	OPEN	--	± 13'-0"	HEIGHT TO LIGHT FIXTURE - FIELD VERIFY	115
116	RECEIVING	CONC	--	CMU (E)	(E)	GYP (E)	--	CMU	--	CMU	--	CMU	--	OPEN	--	± 13'-0"	HEIGHT TO LIGHT FIXTURE - FIELD VERIFY	116
117	WAREHOUSE 3	CONC	--	CMU (E)	RB2	CMU	--	CMU	--	GYP (E)	--	CMU	--	OPEN	--	± 13'-0"	HEIGHT TO LIGHT FIXTURE - FIELD VERIFY	117
118	MECHANICAL / IT ROOM	WD	WD/VCT	GYP (E)	--	GYP (E)	--	GYP (E)	--	GYP (E)	--	GYP (E)	--	OPEN	--	--	VCT @ IT BOARD	118
119	STAIRWAY	WD	VTR/VCT	GYP (E)	--	GYP (E)	--	GYP (E)	--	GYP (E)	--	GYP (E)	--	OPEN	--	--	PROVIDE VINYL TREADS / VCT AT TOP LANDINGS	119

FLOOR	BASE	WALL	CEILING
CONC	CONCRETE (EXISTING)	RBI	4" RUBBER BASE-ARMSTRONG COLOR INTEGRATED; COLOR-#12 SHADOW GREY
VCT	VINYL COMPOSITE TILE 12"x12"-COLOR #51807 SHADOW BLUE	RB2	4" RUBBER BASE-ARMSTRONG COLOR INTEGRATED; COLOR-#60 JET BLACK
CPT	CARPET-COLOR MOHAWK DATUM BT284/MARBLE	CMU	CONCRETE MODULAR BLOCK (EXISTING)
SC	SEALED CONCRETE	GYP (E)	GYP(SUM BOARD (EXISTING)
(E)	EXISTING	GYP	GYP(SUM BOARD
(E) RF	REFINISH EXISTING VCT, STRIP WAX, CLEAN TILE SURFACE, RE-WAX, AND POLISH.	(E)	EXISTING
WD	WOOD FRAMED		
VTR	VINYL TREAD/RISER BY ROPPE #16 LIGHT DUTY RIBBED SQUARE NOSE. COLOR TO BE SELECTED FROM STAND COLORS.		

NOTES:  
 \*\*\* 96" SLATWALL WALL COVERING SHALL BE INSTALLED 12" A.F.F. SLATWALL FURNISHED BY OWNER, INSTALLED BY CONTRACTOR.



UPPER FLOOR PLAN  
 1/8"=1'-0"  
 NORTH



FINISH PLAN  
 1/8"=1'-0"  
 NORTH

CONSULTANTS:

**WEDNER & ASSOCIATES, LLC**  
**ARCHITECTURE**  
 830 N. MAIN ST., SUITE 140 • PUEBLO, CO 81003  
 719-686-8249 (C)

INTERIOR REMODEL  
 for  
**REXEL USA - Pueblo**  
 737 DESERT FLOWER BOULEVARD  
 SUITE 100  
 PUEBLO, COLORADO 81001

STAMP:

ISSUE RECORD:

OWNER CHANGES	9/5/2018
CONSTRUCTION DOCUMENTS	10/5/2018

PROJECT NUMBER: 2018-14  
 DRAWN BY: RA  
 REVIEWED BY: GV/SW

INTERIOR  
 FINISH  
 PLAN  
**A4**

LIGHTING FIXTURE SYMBOL LEGEND	
SYMBOL	DESCRIPTION
	FLUORESCENT OR LED FIXTURE. UPPER CASE LETTER INDICATES TYPE, LOWER CASE LETTER INDICATES CONTROLLING SWITCH AND NUMBER IS CIRCUIT NUMBER.
	LIGHT FIXTURE WIRED HOT AS NIGHT LIGHT. RE: FIXTURE SCHEDULE FOR FIXTURES THAT REQUIRE AN EMERGENCY BATTERY TYPE BALLAST/DRIVER.
	CEILING MOUNTED SELF CONTAINED - EXIT SIGN/EM LIGHT. RE: FIXTURE SCHEDULE FOR ADDITIONAL INFORMATION. WIRE AHEAD OF LOCAL SWITCH OR TO HOT CIRCUIT INDICATED.

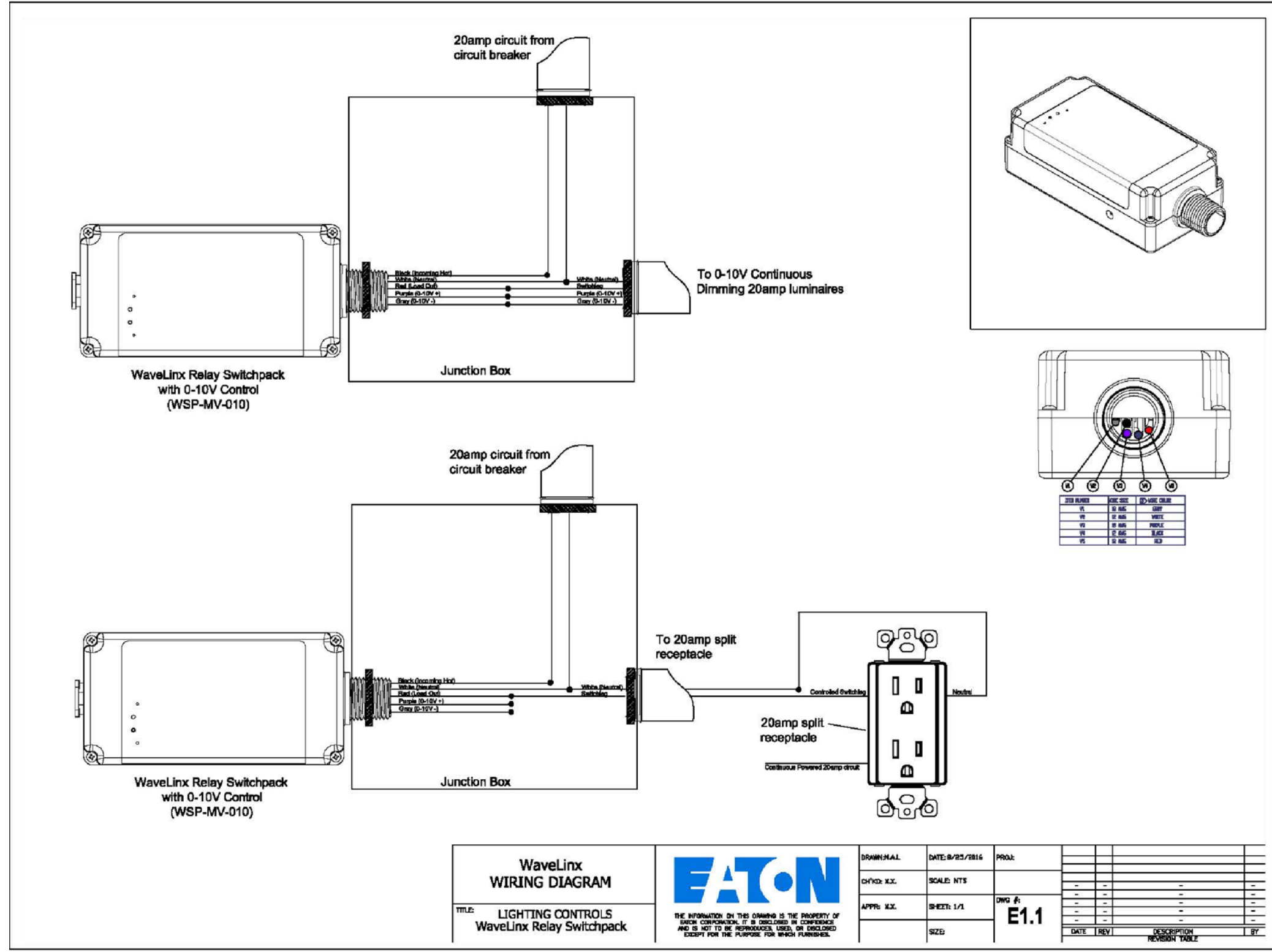
LINE VOLTAGE CONTROL LEGEND	
SYMBOL	DESCRIPTION
	20A-1P WALL SWITCH INSTALLED AT +45° ABOVE FINISHED FLOOR.
	20A 3 WAY SWITCH INSTALLED AT +45° ABOVE FINISHED FLOOR.
	OWNER FURNISHED - CONTRACTOR INSTALLED LINE VOLTAGE (DUAL TECHNOLOGY- 360 DEG) OCCUPANCY SENSOR SWITCH WITH 5 TO 30 MINUTE TIME DELAY (SET AT 15 MINUTES). INSTALL FLUSH IN CEILING & WIRE AHEAD OF FIXTURE CONTROLLING DEVICE. COOPER #OAC-DT-2000-MV.
	OWNER FURNISHED - CONTRACTOR INSTALLED WALL MOUNTED 120V DUAL TECHNOLOGY MOTION SENSOR/ SWITCH WITH MANUAL ON-OFF OPERATION AND ADJUSTABLE TIME DELAY. FLUSH MOUNTED AT + 45° A.F.F. COOPER #ONW-D-1001-MV. GROUND REQUIRED.

WIRELESS LIGHTING CONTROL LEGEND	
SYMBOL	DESCRIPTION
	OWNER FURNISHED - CONTRACTOR INSTALLED 120V WIRELESS 2-LARGE BUTTON DIMMING CONTROLLER. COOPER WAVELINX #W11-RL
	OWNER FURNISHED - CONTRACTOR INSTALLED 120V WIRELESS 4-SMALL BUTTON DIMMING CONTROLLER. COOPER WAVELINX #W4S-RL
	OWNER FURNISHED - CONTRACTOR INSTALLED WIRELESS PASSIVE INFRARED 360 DEGREE CEILING SENSOR. COOPER #CWPD-1500
	OWNER FURNISHED - CONTRACTOR INSTALLED WIRELESS RELAY SWITCHPACK, 20A, 0-10V DIMMING. COOPER #WSP-MV-010.
	OWNER FURNISHED - CONTRACTOR INSTALLED 120V WIRELESS AREA CONTROLLER WITH BUILT IN TIME CLOCK - PLUGGED INTO 120V CEILING MOUNTED RECEPTACLE.

FIXTURE SCHEDULE - REXEL PUEBLO BRANCH							
TYPE	PICTORAL	DESCRIPTION & MANUFACTURES CATALOGUE NUMBERS ALL FIXTURES ARE 277V	NOTES	FINISH	LOCATION	LAMP(S)	
						NO.	TYPE
A		2' x 4' RECESSED SHALLOW PLENUM LED FIXTURE WITH 0-10V DIMMING. CEILING: LAY-IN ACOUSTICAL GRID METALUX #24RTC4840 SERIES Ae SAME AS A WITH 14W EM BATTERY BACK-UP	1	WHITE	VARIOUS	-	38W/ 4775LUM/ 840
A1		2' x 2' RECESSED SHALLOW PLENUM LED FIXTURE WITH 0-10V DIMMING. CEILING: LAY-IN ACOUSTICAL GRID METALUX #24RTC3440 SERIES	1	WHITE	VARIOUS	-	29W/ 3523LUM/ 840
B		LED HIGHBAY WITH 0-10V DIMMING. CEILING: OPEN TO STRUCTURE METALUX #VHBLD-LD1-18-W-L840-CDI-U SERIES Be SAME AS B WITH 20W EM BATTERY BACK-UP	1	WHITE	VARIOUS	-	160W/ 18,568LUM/ 840
B1		LED HIGHBAY WITH 0-10 DIMMING AND OCCUPANCY SENSOR. CEILING: OPEN TO STRUCTURE METALUX #VHBLD-LD1-18-W-L840-CDI-U SERIES B1e SAME AS B1 WITH 20W EM BATTERY BACK-UP	1	WHITE	VARIOUS	-	160W/ 18,568LUM/ 840
D		SURFACE MOUNTED LENSED LED STRIP WITH 0-10V DIMMING AND OCCUPANCY SENSOR. CEILING: OPEN TO STRUCTURE METALUX #4SLSTP4040 SERIES	1	WHITE	VARIOUS	-	44W/ 4760LUM/ 840
		SELF-CONTAINED EMERGENCY LIGHT WITH INJECTION MOLDED HOUSING, 2 HEADS, SELF-DIAGNOSTIC FEATURE AND HIGH ABUSE HOUSING (277V)	2	WHITE	VARIOUS	2	BY MFR
		SELF-CONTAINED GREEN LED EXIT SIGN WITH HIGH IMPACT RESISTANT THERMO-PLASTIC (WHITE) HOUSING AND SELF DIAGNOSTIC FEATURE. (277V)	2 & 3	WHITE BODY	ENTRY	-	PER MFR
		SELF-CONTAINED GREEN LED EXIT SIGN WITH WITH (2) EMERGENCY LIGHT HEADS, HIGH IMPACT RESISTANT THERMO-PLASTIC (WHITE) HOUSING AND SELF DIAGNOSTIC FEATURE. (277V)	2 & 3	WHITE BODY	ENTRY	1	PER MFR

NOTES:  
1. ALL FIXTURES ARE OWNER FURNISHED - CONTRACTOR INSTALLED.

NOTE:  
ALL LIGHTING AND LIGHTING CONTROLS ARE OWNER FURNISHED, CONTRACTOR INSTALLED. REFER TO EQUIPMENT MANUFACTURER'S WIRING DIAGRAMS AND DETAILS FOR ALL REQUIREMENTS IN REGARDS TO THE WIRELESS CONTROLS SYSTEM.



WSP-MV-010  
WIRELESS RELAY SWITCHPACK WIRING DIAGRAM

INDEX TO ELECTRICAL DRAWINGS

- E0.1 SCHEDULES AND LEGENDS
- E.1.1 ELECTRICAL DEMOLITION PLANS
- E2.1 NEW WORK LIGHTING PLAN
- E3.1 NEW WORK POWER PLAN
- E4.1 SINGLE LINE DIAGRAM AND PANEL SCHEDULES

CONSULTANTS:  
**K E**  
KOHNET ELECTRICAL ENGINEER'S, INC.  
911 South 8th Street  
Colorado Springs Co 80905  
Phone (719) 633-2637  
Fax: (719) 633-3465  
email@kohnetee.com

**W E**  
WEDNER & ASSOCIATES, LLC  
ARCHITECTURE  
830 N. MAIN ST., SUITE 140 PUEBLO, COLORADO 81003  
719-696-8249 (O)

INTERIOR REMODEL  
for  
REXEL USA - PUEBLO BRANCH  
737 DESERT FLOWER BLVD  
SUITE 100  
PUEBLO, CO 81003

STAMP:

ISSUE RECORD:  
Constr. Document 10-05-2018

PROJECT NUMBER: 2018-10  
DRAWN BY: MSK  
REVIEWED BY: LMAK

LIGHTING CONTROLS & FIXTURE SCHEDULE  
**E0.1**

\\192.168.0.10\server\files\Projects\2018\2018.024\_2018.024\_Elec\_CD\_10-05-18.dwg Oct 05, 2018 - 1:05:11am





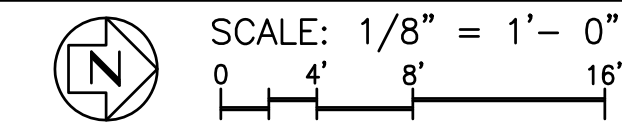
**DEMOLITION - GENERAL NOTES**

1. IT IS THE RESPONSIBILITY OF THE CONTRACTOR TO FAMILIARIZE THEMSELVES WITH THE LAYOUT OF THE FACILITY PRIOR TO DEMOLITION.
2. THE OWNER HAS FIRST RIGHT OF SALVAGE OF ALL EQUIPMENT REMOVED. IT IS THE RESPONSIBILITY OF THE CONTRACTOR TO HAUL AWAY AND DISPOSE OF ALL UNCLAIMED MATERIALS.
3. LOCATIONS OF DEVICES AND EQUIPMENT INDICATED HAVE BEEN VERIFIED BY THE ENGINEER. ALL DEVICES SHOWN ARE SCHEDULED FOR DEMOLITION UNLESS NOTED OTHERWISE. MAINTAIN CIRCUIT CONTINUITY FOR ALL OTHER DEVICES SCHEDULED TO REMAIN. REFER TO NEW WORK PLANS.
4. IT IS THE CONTRACTOR'S OPTION TO SALVAGE BRANCH CIRCUIT CONDUITS, BOXES, CONNECTORS AND SUPPORT STRAPS (FOR REUSE) PROVIDING THEY ARE NOT DAMAGED AND CAN BE REINSTALLED TO MEET ELECTRICAL SPECIFICATIONS AND NEC REQUIREMENTS.
5. ALL FLUORESCENT LAMPS REMOVED SHALL BE CONSIDERED AS HAZARDOUS MATERIAL AND DISPOSED OF ACCORDINGLY.
6. COORDINATE WITH THE G.C. TO PATCH, REPAIR OR COVER ALL UNUSED OPENINGS THAT REMAIN AFTER NEW CONSTRUCTION.

**ABBREVIATIONS**

- (E) - EXISTING DEVICE SCHEDULED TO REMAIN. MAINTAIN CIRCUIT CONTINUITY TO ALL SUCH DEVICES.

**ELECTRICAL DEMOLITION PLAN**



\\192.168.0.10\server\files\Projects\2018\2018.024.2018.024.Elec CD 10-05-18.dwg Oct 05, 2018 - 10:51am

**CONSULTANTS:**  
  
**KOHNERT ELECTRICAL ENGINEER'S, INC.**  
 911 South 8th Street  
 Colorado Springs Co 80905  
 Phone (719) 633-2637  
 Fax: (719) 633-3465  
 email@kohnertee.com

  
**WEDNER & ASSOCIATES, LLC**  
**ARCHITECTURE**  
 830 N. MAIN ST., SUITE 140 PUEBLO, COLORADO 81003  
 719-696-8249 (O)

**INTERIOR REMODEL**  
 for  
**REXEL USA - PUEBLO BRANCH**  
**737 DESERT FLOWER BLVD**  
 SUITE 100  
 PUEBLO, CO 81003

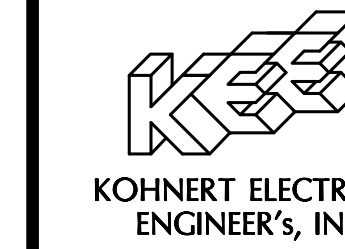
**STAMP:**

ISSUE RECORD:	
Constr. Document	10-05-2018

PROJECT NUMBER: 2018-10  
 DRAWN BY: MSK  
 REVIEWED BY: LMAK

**LIGHTING DEMOLITION PLAN**

**E1.1**



911 South 8th Street  
Colorado Springs Co 80905  
Phone (719) 633-2637  
Fax: (719) 633-3465  
email@kohnertee.com



830 N. MAIN ST., SUITE 140 PUEBLO, COLORADO 81003  
719-696-8249 (C)

INTERIOR REMODEL  
for  
REXEL USA - PUEBLO BRANCH  
737 DESERT FLOWER BLVD  
SUITE 100  
PUEBLO, CO 81003

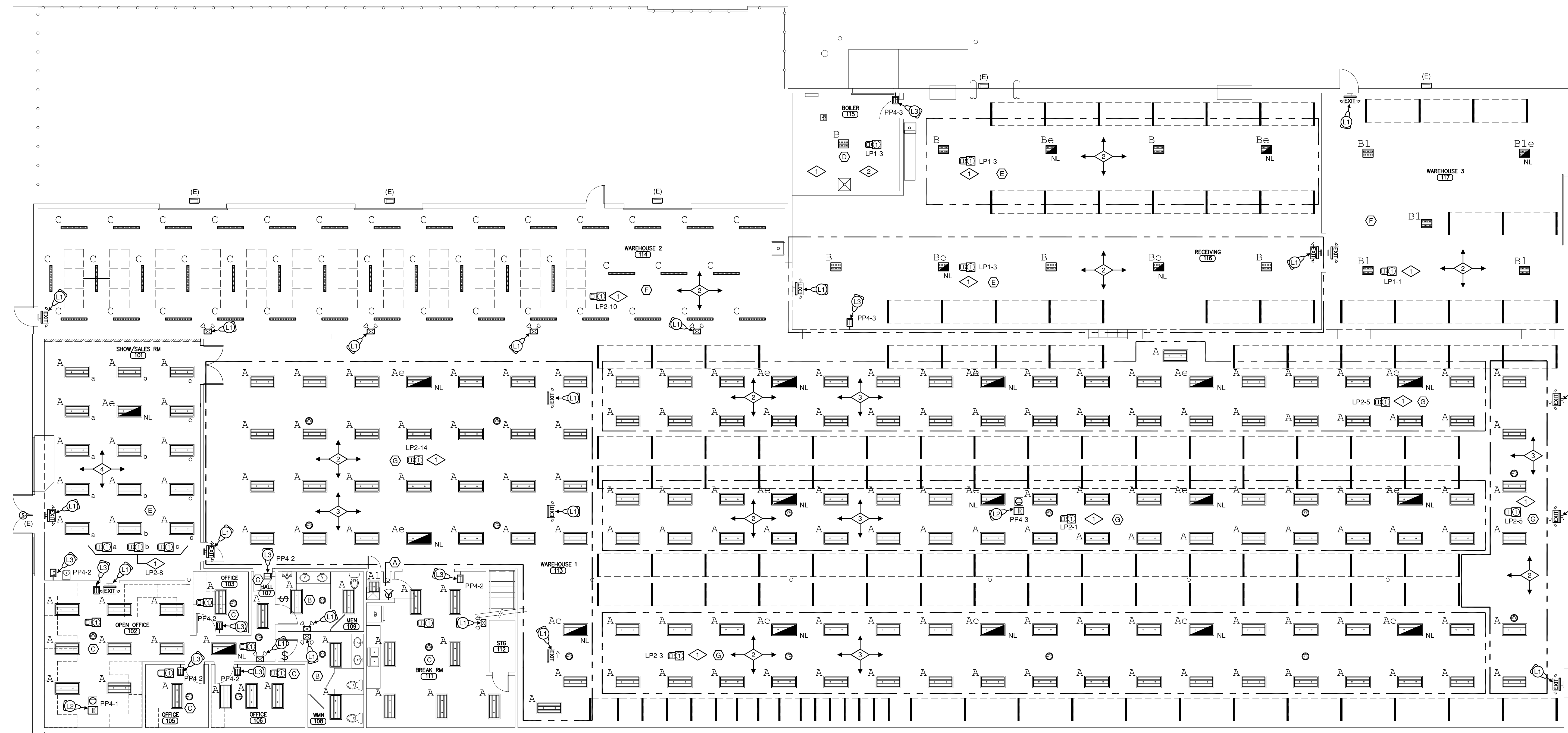
STAMP:

ISSUE RECORD:  
Constr. Document 10-05-2018

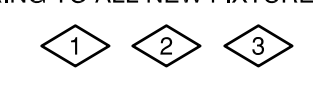
PROJECT NUMBER: 2018-10  
DRAWN BY: MSK  
REVIEWED BY: LMAK

LIGHTING PLAN

E2.1



REUSE EXISTING CIRCUITS THIS AREA  
PROVIDE NEW CONTROLS AND 0-10V  
WIRING TO ALL NEW FIXTURES.



LIGHTING PLAN

SCALE: 1/8" = 1'-0"  
0 4' 8' 16'

LIGHTING PLAN : GENERAL NOTES

- ALL WIRING TO BE CONCEALED IN NEW OR EXISTING CONSTRUCTION.
- IT IS THE CONTRACTORS RESPONSIBILITY TO FAMILIARIZE THEMSELVES WITH THE PROJECT. GREAT CARE SHALL BE TAKEN TO NOT DAMAGE ANY EXISTING DEVICES SCHEDULED TO REMAIN.
- MAINTAIN CIRCUIT CONTINUITY TO ALL AREAS SCHEDULED TO REMAIN.
- LOAD EVALUATION:**  
LOAD ON CCT LP-1 HAS BEEN REDUCED BY 1,246W  
LOAD ON CCT LP-3 HAS BEEN REDUCED BY 2,833W  
LOAD ON CCT LP-1 HAS BEEN REDUCED BY 1,165W  
LOAD ON CCT LP-2 HAS BEEN REDUCED BY 1,732W  
LOAD ON CCT LP-5 HAS BEEN REDUCED BY 748W  
LOAD ON CCT LP-9 HAS BEEN REDUCED BY 288W  
LOAD ON CCT LP-11 HAS BEEN REDUCED BY 700W  
LOAD ON CCT LP-13 HAS BEEN REDUCED BY 349W  
LOAD ON CCT LP-8 HAS BEEN REDUCED BY 270W  
LOAD ON CCT LP-10 HAS BEEN REDUCED BY 418W  
LOAD ON CCT LP-14 HAS BEEN REDUCED BY 1,468W  
  
TOTAL LOAD REDUCTION ON PANEL LP1: 4,079 WATTS.  
TOTAL LOAD REDUCTION ON PANEL LP2: 7,138 WATTS.

NOT CHANGE IN PANEL OR BREAKERS

LIGHTING PLAN : CNTRL NOTES

- (A) LIGHT(S) CONTROLLED BY A 1-P WALL MOUNTED (120V.) DUAL TECHNOLOGY OCCUPANCY SENSOR.
- (B) LIGHTING THIS ROOM IS CONTROLLED BY A CEILING MOUNTED OCCUPANCY SENSORS WHOSE OUTPUT IS CONTROLLED BY A LOCAL WALL SWITCH OR SWITCHES.
- (C) LIGHTING THIS ROOM CONTROLLED BY CEILING MOUNTED OCCUPANCY SENSOR AND WIRELESS DIMMING SWITCH.
- (D) ROOM CONTROLLED BY 1 ZONE DIMMING & WIRELESSLY VIA TIME CLOCK LOCATED IN AREA CONTROLLER FOR AUTOMATIC SHUT-OFF.
- (E) ROOM CONTROLLED BY MULTI ZONE DIMMING & WIRELESSLY VIA TIME CLOCK LOCATED IN AREA CONTROLLER FOR AUTOMATIC SHUT-OFF.
- (F) ROOM CONTROLLED VIA FIXTURE MOUNTED OCCUPANCY SENSORS & WIRELESSLY VIA TIME CLOCK LOCATED IN AREA CONTROLLER FOR AUTOMATIC SHUT-OFF.
- (G) ROOM CONTROLLED VIA CEILING MOUNTED OCCUPANCY SENSORS FOR AREA AND AISLE CONTROL & WIRELESSLY VIA TIME CLOCK LOCATED IN AREA CONTROLLER FOR AUTOMATIC SHUT-OFF.

LIGHTING PLAN : FLAG NOTES

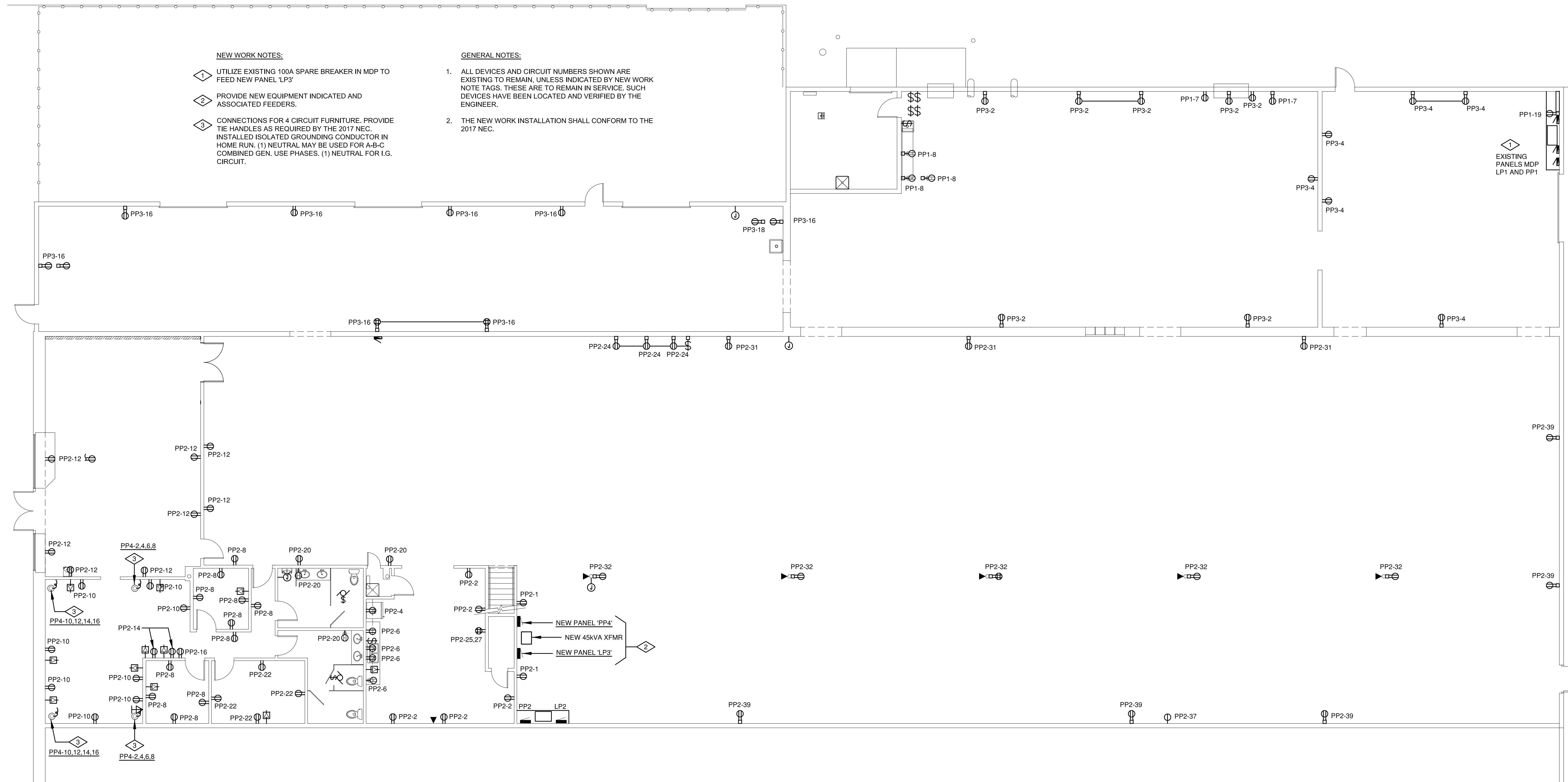
- (1) OWNER FURNISHED - CONTRACTOR INSTALLED EM/EXIT LIGHTS. WIRE HOT AHEAD OF LOCAL CIRCUIT.
- (2) PROVIDE CEILING MOUNTED RECEPTACLE FOR OWNER FURNISHED - CONTRACTOR INSTALLED WIRELESS AREA CONTROLLER AND WIRE TO 120V CIRCUIT INDICATED.
- (3) PROVIDE 120V FOR OWNER FURNISHED - CONTRACTOR INSTALLED WALL MOUNTED LIGHTING CONTROL AND WIRE TO CIRCUIT INDICATED.

LIGHTING PLAN : CIRCUITING NOTES

- (1) WIRE RELAY PACK TO EXISTING CIRCUIT INDICATED.
- (2) WIRE ALL FIXTURES THIS AREA THRU RELAY PACK WITHIN AREA. INCLUDE 0-10V DIMMING CONDUCTORS TO ALL SWITCHED FIXTURES. WIRE 'N/EM' FIXTURES HOT AHEAD OF SWITCHED CIRCUIT.
- (3) ALL OCCUPANCY SENSORS ARE WIRELESS PROGRAMMED TO OPERATE RELAY WITHIN AREA INDICATED.
- (4) WIRE ALL FIXTURES THIS AREA THRU RELAY PACKS. WIRE TO APPROPRIATE DESIGNATION (i.e. 'a' - 'b' - 'c'). INCLUDE 0-10V DIMMING CONDUCTORS TO ALL SWITCHED FIXTURES. WIRE 'N/EM' FIXTURES HOT AHEAD OF SWITCHED CIRCUIT. AUTOMATIC SHUT-OFF PROVIDED BY TIMECLOCK LOCATED IN WIRELESS AREA CONTROLLER.

\\192.168.0.10\server\files\Projects\2018\2018.024\_2018.024\_Elec\_CD\_10-05-18.dwg Oct 05 2018 - 10:50am





**POWER & SIGNAL PLAN**

SCALE: 1/8" = 1'-0"  
 0 4' 8' 16'

**CONSULTANTS:**

**KOHNERT ELECTRICAL ENGINEER'S, INC.**

911 South 8th Street  
 Colorado Springs Co 80905  
 Phone (719) 633-2637  
 Fax: (719) 633-3465  
 email@kohnertee.com

**WEDNER & ASSOCIATES, LLC**  
**ARCHITECTURE**

830 N. MAIN ST., SUITE 140 PUEBLO, COLORADO 81003  
 719-696-8249 (O)

**INTERIOR REMODEL**  
 for  
**REXEL USA - PUEBLO BRANCH**  
 737 DESERT FLOWER BLVD  
 SUITE 100  
 PUEBLO, CO 81003

**STAMP:**

**ISSUE RECORD:**

Constr. Document	10-05-2018
------------------	------------

PROJECT NUMBER: 2018-10  
 DRAWN BY: MSK  
 REVIEWED BY: LMAK

**POWER & SIGNAL PLAN**

**E3.1**

\\192.168.0.10\server\files\Projects\2018\2018.024\2018.024\_Elec\_CD\_10-05-18.dwg Oct 05 2018 - 10:50am

DIVISION 16 ELECTRICAL

SECTION 16010 - BASIC REQUIREMENTS

- Part 1. General
- A. Provisions of the General Conditions apply to the Electrical Work.
  - B. Coordinate work with other trades.
  - C. Obtain & pay for required permits; schedule building inspections.
  - D. The installation shall conform to the 2017 National Electrical Code.

SECTION 16050 - BASIC MATERIALS & METHODS

- Part 1. Conduit
- A. Use GRC where exposed and subject to damage.
  - B. EMT shall be utilized per Part 2 'Branch Circuits'.
  - C. MC Cable allowed per Part 2 'Branch Circuits'.
  - D. Use metal bushings w/insulated throat (OZ type "BLO").
  - E. Use raintight compression fittings on all exterior conduits.

- Part 2. Branch Circuits
- A. All homeruns and multi-circuit runs to be in conduit.
  - B. Single circuit runs in walls may be MC cable.
  - C. Dimmed Lighting circuits to include 0-10v wiring in one assembly - Equivalent to AFC Luminary Cable.

- Part 3. Outlets
- A. One piece only, 4"sq min. for wall outlets w/appropriate ring.
  - B. Weatherproof: Cast box w/NEC Art.410-57(b) approved cover.

- Part 4. Wiring, Devices & Plates:
- A. Receptacles - 15 or 20A Ivory, Commercial grade or better.

- Part 5. Wire
- A. Copper, min. 75 degree C, insulated (THHN, THWN or XHHW).
  - B. Branch circuit conductors #12 minimum.
  - C. Wiring in lighting fixtures, 90 degree C, rated.

- Part 6. Installation
- A. Support conduit from structure, not from ceiling suspension wires. Supports to be maximum of 7' apart.

SECTION 16180 EQUIPMENT WIRING SYSTEMS

- Part 1. Mechanical Units
- A. Interior
    - 1. Flexible conduit.
    - 2. Heavy Duty Fusible Disconnects. Fuse sizes per Mechanical Equipment Schedule MOCSP information.
  - B. Exterior
    - 1. Raintight liquid flexible conduit.
    - 2. Heavy Duty Disconnects, Nema 3R for Exterior Application.

SECTION 16190 SUPPORTING DEVICES

- Part 1. Conduits
- A. One or two hole straps or adjustable steel hanger attached to structure.

- Part 2. Boxes and Cabinet Supports
- A. Surface mounted cabinets - provide a min. of (4)anchors.
  - B. Flush mtd cabinets - provide channel support top & bottom.

- Part 3. Anchors
- A. Hollow masonry - Toggle bolts.
  - B. Solid masonry - Lead expansion anchors and preset inserts.
  - C. Metal surfaces - Machine screws, bolts or welded studs.

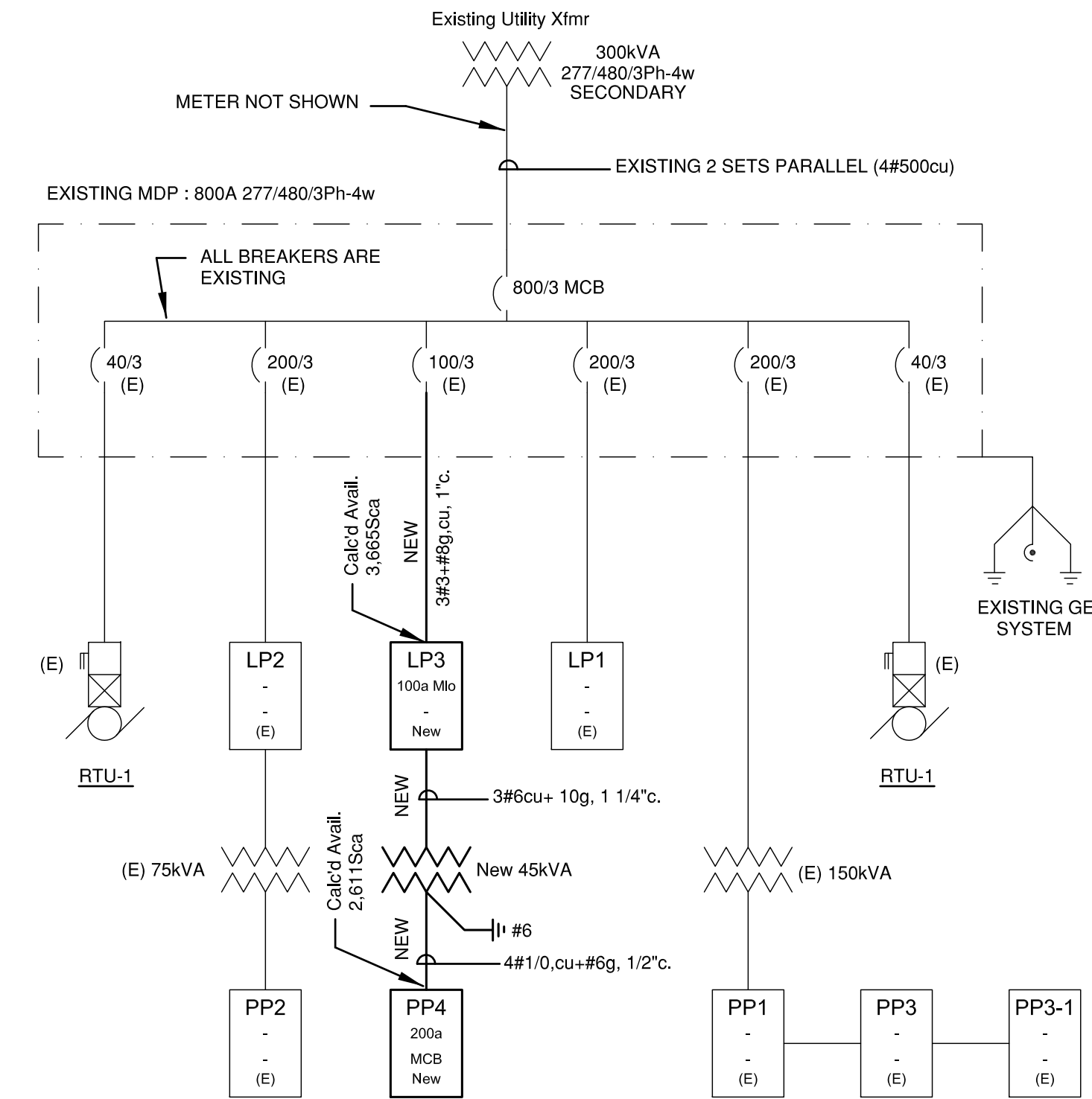
SECTION 16195 - ELECTRICAL IDENTIFICATION

- Part 1. General
- A. Engraved Nameplates - For Main Service Breakers & Panelboards.
  - B. Switches - Devices - Disconnects
  - C. Junction Boxes
  - D. Directory Cards - Type written with erasable letters for 'Spares'.

- Part 2. Product and Materials
- A. Engraved Plastic Plates: Black letters on white background with self-adhesive back, 1/2" High Letters for Part 1.- B.
  - B. Tape Label Printed (Black on White) 1/4" High Letters for Part 1.-C.
  - C. Permanent Marker with Circuit or System Information for Part 1.-D.
  - D. Directory Cards: Manufacturer's standard pre-printed form under clear plastic protective cover.

SCHEDULE FOR PANEL LP3									
VOLTS/PHASE/WIRE	277/480/3ph-4w								
MAIN DEVICE	100a_MLO								
MOUNTING	SURFACE								
S.C. RATING	14,000_AIC								
NOTES: New Panel N/A									
Duty/Demand Load is Calculated Per NEC : Ltg, Cmp, Htg, Mtr & AC at 125%, Rec @ 10 + 50% and Othr @100%									
PHASE A (KVA)	2.3								
PHASE B (KVA)	2.3								
PHASE C (KVA)	1.5								
CONNECTED KVA	6.10								
LOAD FACTOR	1.00								
DUTY/DEMAND KVA	6.10								
AVERAGE AMPS/LEG BASED ON DUTY/DEMAND KVA 7.3									
#	DESCRIPTION	LOAD	BRKR	PH	BRKR	LOAD	DESCRIPTION	#	
1	Spore		20/1	A	20/1		Spore	2	
3	Spore		20/1	B	20/1		Spore	4	
5	Spore		20/1	C	20/1		Spore	6	
7	Spore			A			Spore	8	
9	Spore			B			Spore	10	
11	Spore			C			Spore	12	
13	Spore		A	60/3		2,300	Panel PP4	14	
15	Spore		B	Do		2,300	Xfmr	16	
17	Spore		C	Do		1,500	Do	18	
ENCLOSURE TYPE: NEMA 1		BREAKER TYPE: BOLT ON							
CLASS OF EQUIPMENT: PANELBOARD		NO. CIRCUITS: 18							

SCHEDULE FOR PANEL PP4									
VOLTS/PHASE/WIRE	120/208/3ph-4w								
MAIN DEVICE	150a_MCB								
MOUNTING	SURFACE								
S.C. RATING	10,000_AIC								
NOTES: New Panel - Provide with Isolated Ground Bar * Provide Tie Handles as required by the 2017 NEC.									
Duty/Demand Load is Calculated Per NEC : Ltg, Cmp, Htg, Mtr & AC at 125%, Rec @ 10 + 50% and Othr @100%									
PHASE A (KVA)	2.9								
PHASE B (KVA)	2.7								
PHASE C (KVA)	1.5								
CONNECTED KVA	7.12								
LOAD FACTOR	1.04								
DUTY/DEMAND KVA	7.40								
AVERAGE AMPS/LEG BASED ON DUTY/DEMAND KVA 20.6									
#	DESCRIPTION	LOAD	BRKR	PH	BRKR	LOAD	DESCRIPTION	#	
1	Ltg : Wireless Sw's South	640	20/1	A	20/1	750	Rec : Furniture	2	
3	Ltg : Wireless Sw's North	480	20/1	B	20/1	750	Rec : Furniture	4	
5	Spore		20/1	C	20/1	750	Rec : Furniture	6	
7	Spore		20/1	A	20/1	750	Rec : Furniture	8	
9	Spore		20/1	B	20/1	750	Rec : Furniture	10	
11	Spore		20/1	C	20/1	750	Rec : Furniture	12	
13	Spore		20/1	A	20/1	750	Rec : Furniture	14	
15	Spore		20/1	B	20/1	750	Rec : Furniture	16	
17	Spore		20/1	C	20/1		Spore	18	
19	Spore		20/1	A	20/1		Spore	20	
21	Spore		20/1	B	20/1		Spore	22	
23	Spore		20/1	C	20/1		Spore	24	
25	Spore			A			Spore	26	
27	Spore			B			Spore	28	
29	Spore			C			Spore	30	
31	Spore			A			Spore	32	
33	Spore			B			Spore	34	
35	Spore			C			Spore	36	
37	Spore			A			Spore	38	
39	Spore			B			Spore	40	
41	Spore			C			Spore	42	
ENCLOSURE TYPE: NEMA 1		BREAKER TYPE: BOLT ON							
CLASS OF EQUIPMENT: PANELBOARD		NO. CIRCUITS: 42							

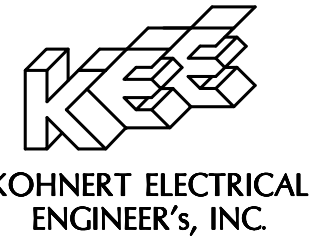


SINGLE LINE DIAGRAM

LOAD EVALUATION NOTE:

1. ALL FLUORESCENT LIGHTING IS BEING REPLACED BY LED. NET REDUCTION IS 11.2KW. NEW FURNITURE LOAD IS 6.1KW. TOTAL LOAD REDUCTION FOR MDP IS 5.1KW OR 6.2amps.

CONSULTANTS:



911 South 8th Street  
Colorado Springs Co 80905  
Phone (719) 633-2637  
Fax: (719) 633-3465  
email@kohnertee.com



830 N. MAIN ST., SUITE 140 PUEBLO, COLORADO 81003  
719-696-8249 (O)

INTERIOR REMODEL  
for  
REXEL USA - PUEBLO BRANCH  
737 DESERT FLOWER BLVD  
PUEBLO, CO 81003

STAMP:

ISSUE RECORD:  
Constr. Document 10-05-2018

PROJECT NUMBER: 2018-10  
DRAWN BY: MSK  
REVIEWED BY: LMAK

SINGLE LINE  
AND PANEL  
SCHEDULES

E4.1