

TYPE MARK	DESCRIPTION	FIRE RATING	STC RATING
1	BEARING FIRE PARTITION SEPARATION WALL: (2) LAYERS 1" GYP. BD. FRATED INSIDE OF 2" TTL. CRACKERS WITH 3/4" AIR SPACE AND 2x6 WD. FRNG. PROVIDE 2" MINERAL WOOL BATT. BOTH SIDES. PROVIDE 2" MINERAL WOOL BATT. INSULATION IN CAVITY OF FRNG. PROVIDE AIR SPACE ABOVE AND BELOW FRNG. PROVIDE TYPE "X" GYP. BD. ON INSIDE AND OUTSIDE. CHANGER, GYP. BD. and 3/4" AIRSPACE CORE SHALL RUN FROM TOP OF FOUNDATION TO UNDERSIDE OF FLOOR/ROOF SHEATHING. PROVIDE 2" MINERAL WOOL INSULATION IN CAVITY. PROVIDE 2" MINERAL WOOL INSULATION IN CAVITY.	N/A	54
2	FIRE PARTITION SEPARATION WALL: 2x4 WD. FRNG. at 16" O.C. with 5/8" TYPE "X" GYP. on ONE SIDE and 5/8" TYPE "X" GYP. on OTHER SIDE. FRNG. on OTHER SIDE OF FRNG. RUN FULL HEIGHT TO UNDERSIDE OF FLOOR/ROOF SHEATHING. PROVIDE 2" MINERAL WOOL INSULATION IN CAVITY. PROVIDE 2" MINERAL WOOL INSULATION IN CAVITY.	HR	50
3	FIRE PARTITION SEPARATION WALL: 2x6 WD. FRNG. at 16" O.C. with 5/8" TYPE "X" GYP. on ONE SIDE and 5/8" TYPE "X" GYP. on OTHER SIDE. FRNG. on OTHER SIDE OF FRNG. RUN FULL HEIGHT TO UNDERSIDE OF FLOOR/ROOF SHEATHING. PROVIDE 2" MINERAL WOOL INSULATION IN CAVITY. PROVIDE 2" MINERAL WOOL INSULATION IN CAVITY.	HR	N/A
4	FIRE PARTITION SEPARATION WALL: 2x4 WD. STUDS at 24" O.C. with 1/2" SOUNDBOARD and 5/8" TYPE "X" GYP. on BOTH SIDES WITH FIBERGLASS BATT. 1" THICK. PROVIDE 2" MINERAL WOOL INSULATION ABOVE OR UNTIL IT BECOMES AN EXTERIOR WALL. UL DES. NO. U387	N/A	N/A
5	FIRE PARTITION SEPARATION WALL: 2x6 WD. STUDS at 24" O.C. with 1/2" SOUNDBOARD and 5/8" TYPE "X" GYP. on BOTH SIDES WITH FIBERGLASS BATT. 1" THICK. PROVIDE 2" MINERAL WOOL INSULATION ABOVE OR UNTIL IT BECOMES AN EXTERIOR WALL. UL DES. NO. U387	N/A	N/A
6	2x4 WD. STUDS at 16" O.C. with 5/8" TYPE "X" GYP. on BOTH SIDES FROM TOP OF FLOOR SHEATHING TO UNDERSIDE OF FLOOR/ROOF SHEATHING. PROVIDE 2" MINERAL WOOL INSULATION ABOVE OR UNTIL IT BECOMES AN EXTERIOR WALL. UL DES. NO. U387	N/A	N/A
7	2x4 WD. STUDS at 16" O.C. with 5/8" TYPE "X" GYP. on BOTH SIDES FROM TOP OF FLOOR SHEATHING TO UNDERSIDE OF FLOOR/ROOF SHEATHING. PROVIDE 2" MINERAL WOOL INSULATION ABOVE OR UNTIL IT BECOMES AN EXTERIOR WALL. UL DES. NO. U387	N/A	N/A
8	PORTLAND CEMENT STUCCO SYSTEM RE: SPECIFICATIONS FOR FIBER CEMENT LAP SIDING FROM FOUNDATION TO UNDERSIDE OF ROOF BATT. PROVIDE 2" MINERAL WOOL INSULATION IN WALL CAVITIES FULL HEIGHT. PROVIDE 2" MINERAL WOOL INSULATION IN WALL CAVITIES FULL HEIGHT.	N/A	N/A
9	2x6 WD. STUDS at 16" O.C. with 5/8" TYPE "X" GYP. on BOTH SIDES FROM TOP OF FLOOR SHEATHING TO UNDERSIDE OF FLOOR/ROOF SHEATHING. PROVIDE 2" MINERAL WOOL INSULATION ABOVE OR UNTIL IT BECOMES AN EXTERIOR WALL. UL DES. NO. U387	N/A	N/A
10	2x4 WD. STUDS at 16" O.C. with 5/8" TYPE "X" GYP. on BOTH SIDES FROM TOP OF FLOOR SHEATHING TO UNDERSIDE OF FLOOR/ROOF SHEATHING. PROVIDE 2" MINERAL WOOL INSULATION ABOVE OR UNTIL IT BECOMES AN EXTERIOR WALL. UL DES. NO. U387	HR	50
11	2x4 WD. STUDS at 16" O.C. with 5/8" TYPE "X" GYP. on BOTH SIDES FROM TOP OF FLOOR SHEATHING TO UNDERSIDE OF FLOOR/ROOF SHEATHING. PROVIDE 2" MINERAL WOOL INSULATION ABOVE OR UNTIL IT BECOMES AN EXTERIOR WALL. UL DES. NO. U387	N/A	N/A
12	SLOPING STAIR WALL: 2x6 WD. STUDS at 16" O.C. with 5/8" TYPE "X" GYP. on BOTH SIDES WITH FIBERGLASS BATT. 1" THICK. PROVIDE 2" MINERAL WOOL INSULATION ABOVE OR UNTIL IT BECOMES AN EXTERIOR WALL. UL DES. NO. U387	N/A	N/A
13	SLOPING STAIR DOUBLE STUD WALL: 2x4 WD. STUDS at 16" O.C. with 5/8" TYPE "X" GYP. on BOTH SIDES FROM TOP OF FLOOR SHEATHING TO UNDERSIDE OF FLOOR/ROOF SHEATHING. PROVIDE 2" MINERAL WOOL INSULATION ABOVE OR UNTIL IT BECOMES AN EXTERIOR WALL. UL DES. NO. U387	N/A	N/A
14	2x4 WD. STUDS at 24" O.C. FROM TOP OF FLOOR SHEATHING TO UNDERSIDE OF STAIR STRUCTURE	N/A	N/A

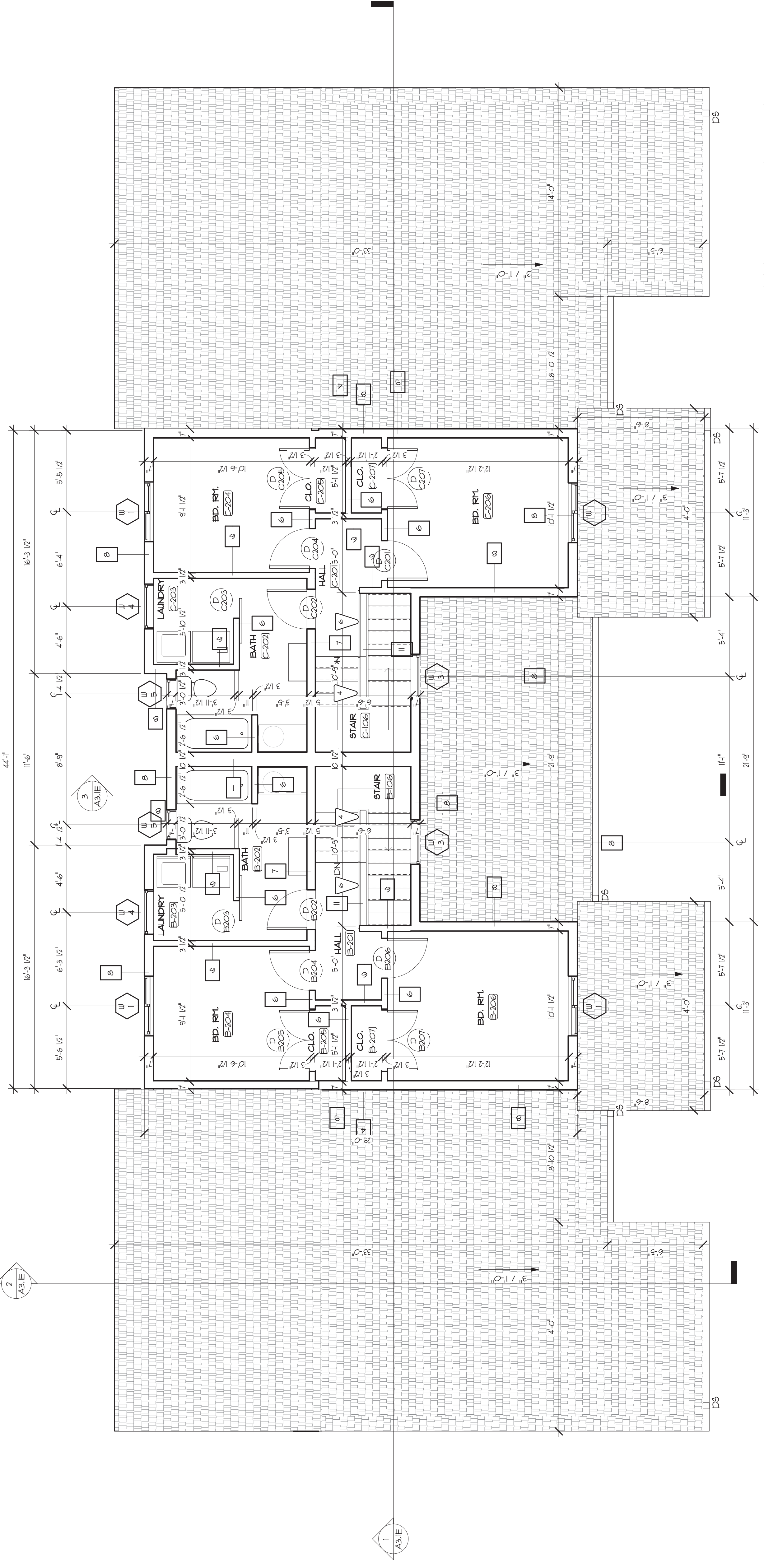
NOTES:
 1) ALL EXTERIOR DIMENSIONS ON FLOOR PLANS ARE FROM OUTSIDE FACE OF EXTERIOR WALL SHEATHING UNLESS OTHERWISE NOTED.
 2) ALL INTERIOR DIMENSIONS ON FLOOR PLANS ARE TO/FROM FACE OF INTERIOR WALL SHEATHING UNLESS OTHERWISE NOTED.
 3) PROVIDE 5/8" TYPE "X" HOLD-UP/HORISURE RESISTANT GYP. BD. AT ALL LIFT WALLS (ADJACENT TO SINKS, TOILETS AND WASHING MACHINES) IN LIEU OF 5/8" TYPE "X" GYP. BD. PROVIDE 5/8" TYPE "X" GYP. BD. BEHIND ALL SCHEDULED ENCLOSURES IN LIEU OF 5/8" TYPE "X" GYP. BD.

NEW WORK FLAG NOTES

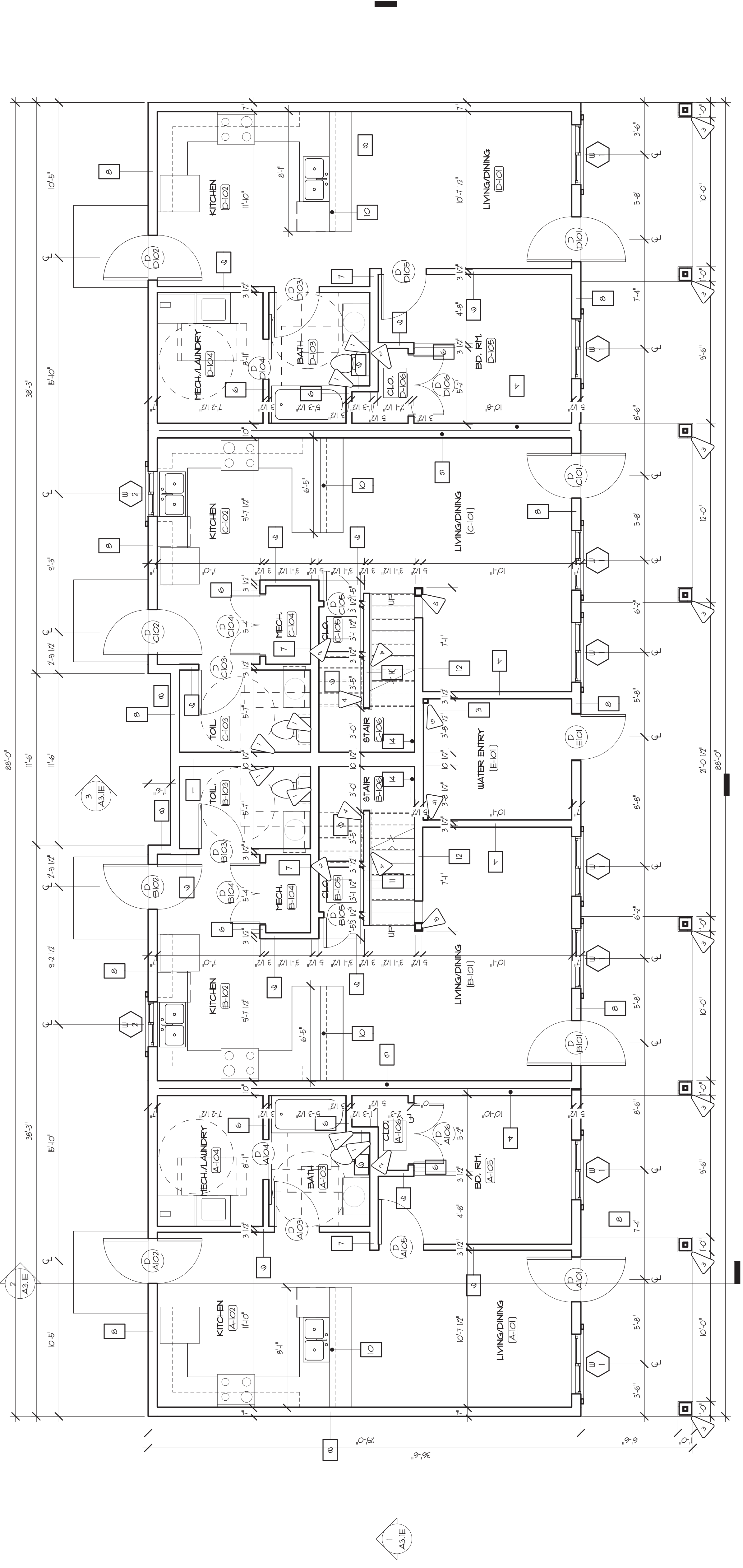
NOTE

- PROVIDE BLOCKING FOR FUTURE INSTALLATION OF GRAB BARS.
- RE INTERIOR ELEVATIONS
- CRAIL SPACE ACCESS DOOR WITH TAMPER PROOF SCREWS
- BRICK VENERETICO PORCH COLUMN WRAP: GUFERS GREEN BRICK VENERETICO PORCH COLUMN WRAP: GUFERS GREEN BRICK SILL and PORTLAND CEMENT PLASTER BASED (3) COAT STUCCO SYSTEM on MIL DIAMOND LATH over (1) LAYER 1/2" BRICK SLIP SHEATHING APPLIED VARIOUS BARBERS on UNDERSIDE OF ROOF FRNG.
- STAIR HANDRAIL at 36" ABOVE EDGE OF STAIR NOSING. ONE SIDE OF STAIR ONLY
- BRICK VENERETICO COLUMN with 5/8" TYPE "X" GYP. BD. UL: GUARD RAIL
- PRE-MANUF. RETAL FINISHING RE: SPECIFICATIONS

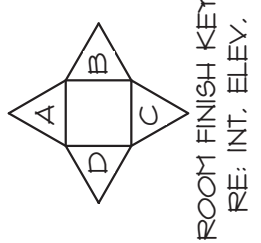
GEN. NOTE: PROVIDE AND INSTALL WINDOW BLINDS AT ALL WINDOWS



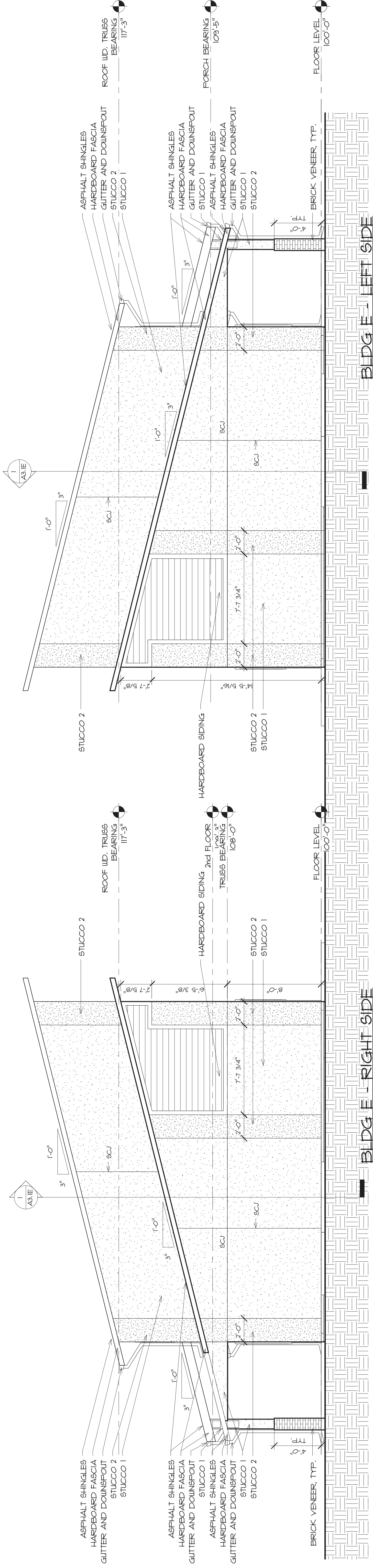
2nd FLOOR - BLDG. E
 SC. 1/4" = 1'-0"
 RE: A3.1A



1st FLOOR - BLDG. E
 SC. 1/4" = 1'-0"
 RE: A3.1A

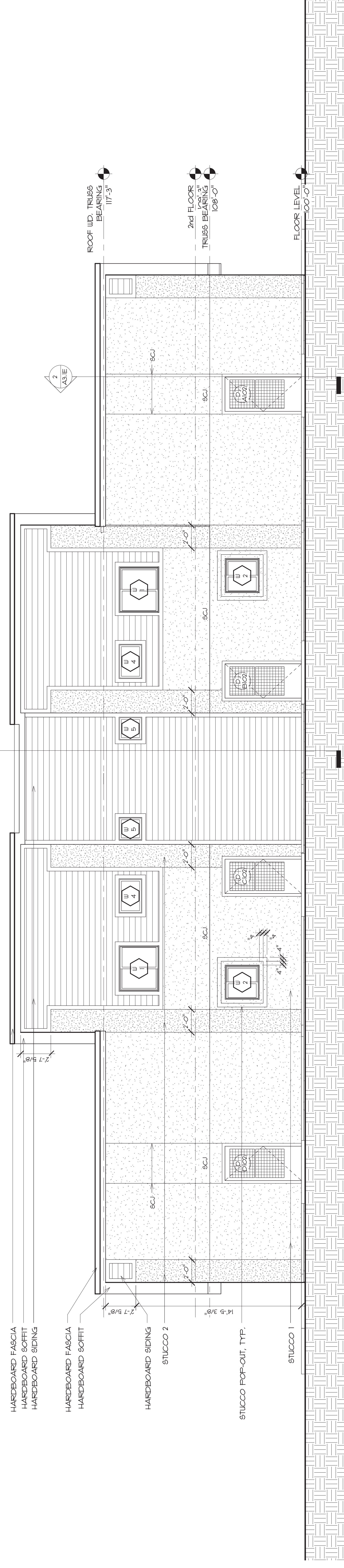
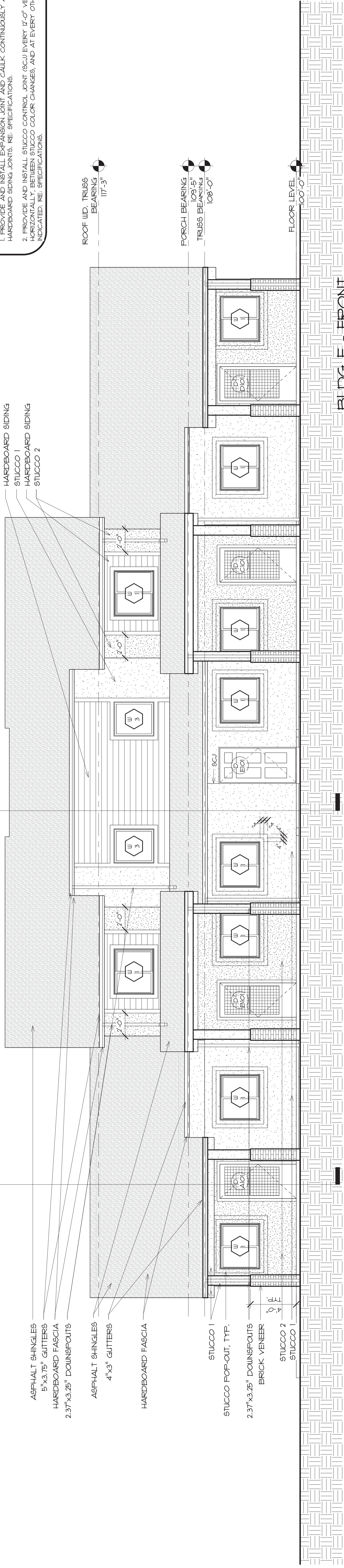


ROOT FINISH KEY, RE: INT. ELEV.

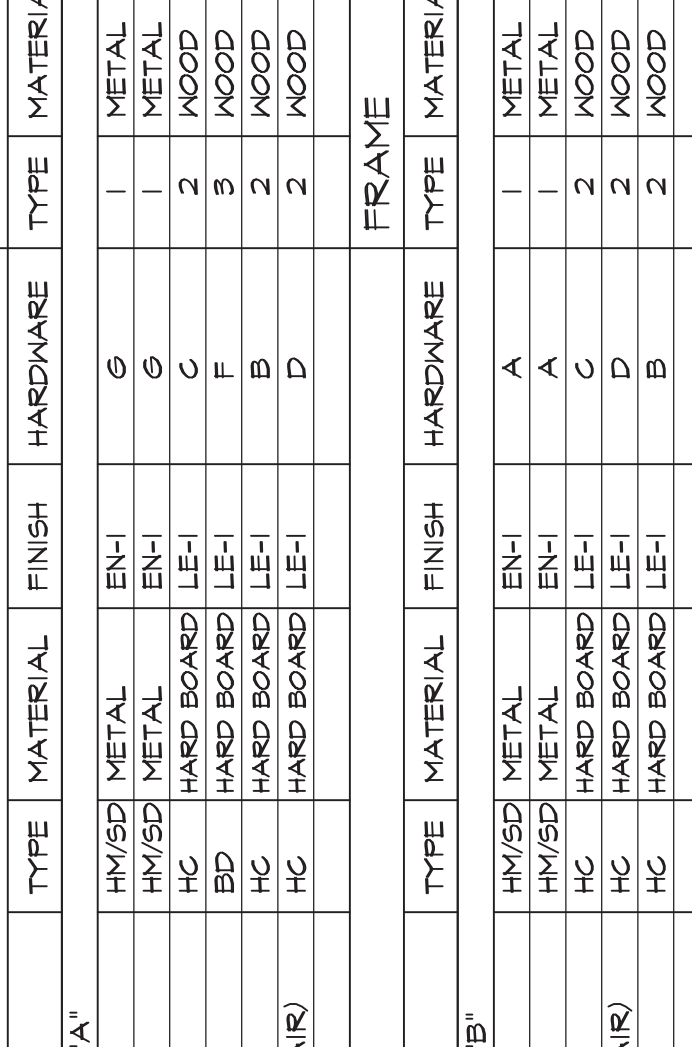


ELEVATION GENERAL NOTES:

1. REMOVE AND INSTALL EXPANSION JOINT AND GULLY CONTINUOUSLY AT ALL STUCCO TO HARDBOARD SIDING JOINTS. RE: SPECIFICATIONS.
2. REMOVE AND INSTALL STUCCO CONTROL JOINT EVERY 16'-0" VERTICALLY AND HORIZONTALLY BETWEEN STUCCO COLOR CHANGES AND AT EVERY OTHER LOCATION INDICATED. RE: SPECIFICATIONS.



EXTERIOR ENTRY DOORS TYPES:
RE: 1 AND 2, THIS SHEET



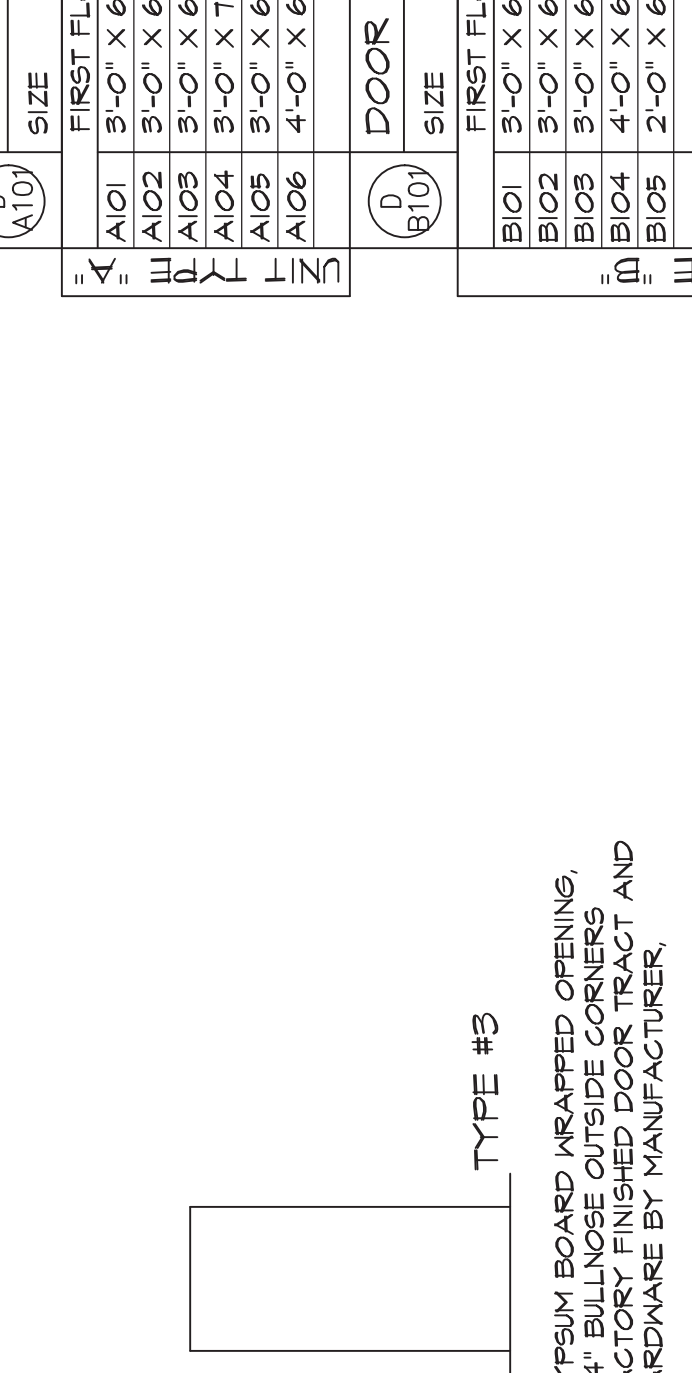
HM
FACTORY PRIMED METAL
HARDWARE ON PRE-HUNG
HINGES TO BUTT WITH ENAMEL
PAINT. PAINT WITH ENAMEL
HARDWARE BY MANUFACTURER.
RE: 1 AND 2, THIS SHEET

SD
2066 LARSON MANUFACTURING
HARDWARE ON PRE-HUNG
HINGES TO BUTT WITH ENAMEL
PAINT. PAINT WITH ENAMEL
HARDWARE BY MANUFACTURER.
RE: 1 AND 2, THIS SHEET

HC
MASONITE 6 PANEL TEXTURED
COLOR WHITE BRASS, INSTALL 4"
LATEX ENAMEL.
EQUIL TO ARTISAN HARDWARE.
Z SLIDING BARN DOOR PAINTED.
RE: 36 AND 1 THIS SHEET

BD
BARN DOOR
MATTIE BLACK HARDWARE
(2) COATS OF SEMI-GLOSS
LATEX ENAMEL.
EQUIL TO ARTISAN HARDWARE.
Z SLIDING BARN DOOR PAINTED.
RE: 36 AND 1 THIS SHEET

INTERIOR DOORS TYPES:
RE: FLOOR PLANS FOR DOOR LOCATIONS

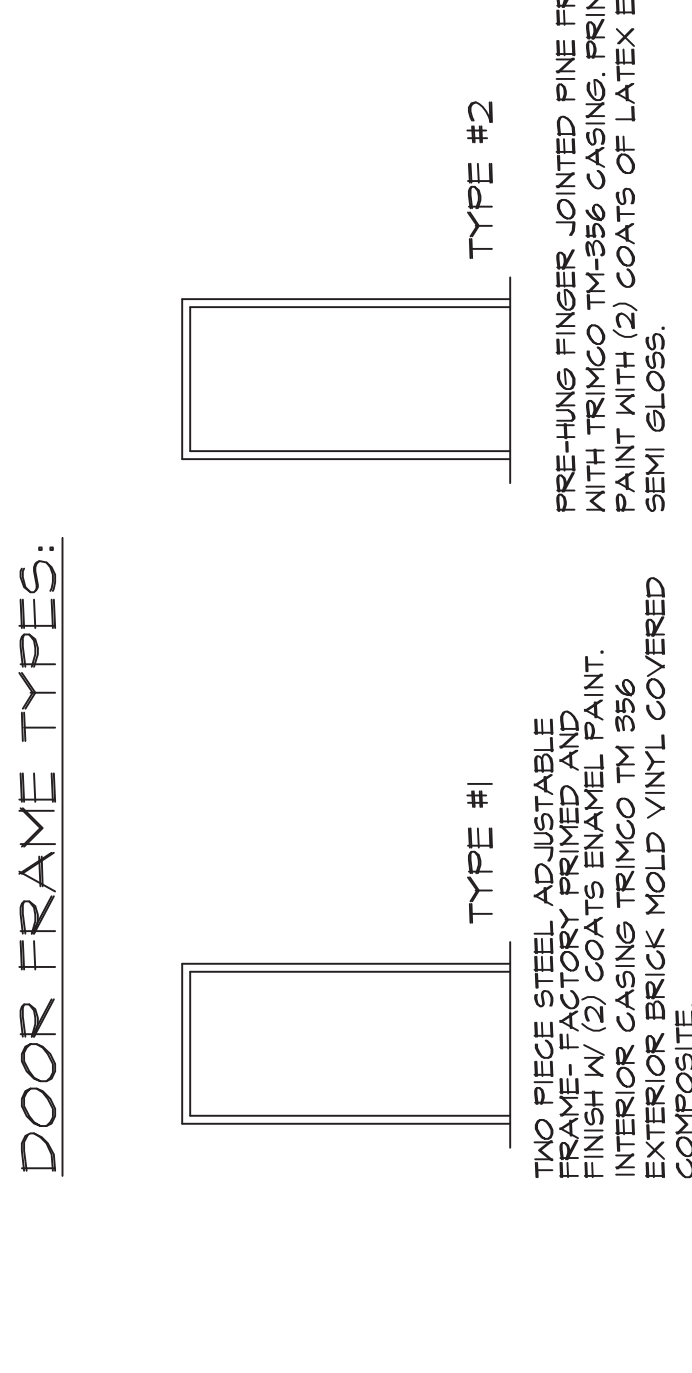


TYPE #1
TWO PIECE STEEL ASSEMBLY
FRAME-FACTORY PRIMED AND
PAINTED (2) COATS OF SEMI-GLOSS
LATEX ENAMEL.
EXTERIOR BRICK MOLD VINYL COVERED
COMPOSITE.
RE: 36 AND 1 THIS SHEET

TYPE #2
PRE-HUNG FINGER JOINTED PINE FRAME,
PINE TRIM, 60% PVC-386 CASING, PINE AND
PINE TRIM, 60% PVC-386 TRACK AND
HARDWARE BY MANUFACTURER.

TYPE #3
GYPSUM BOARD UNRAINED OPENING,
PINE TRIM, 60% PVC-386 TRACK AND
HARDWARE BY MANUFACTURER.

DOOR FRAME TYPES:
RE: 36 AND 1 THIS SHEET

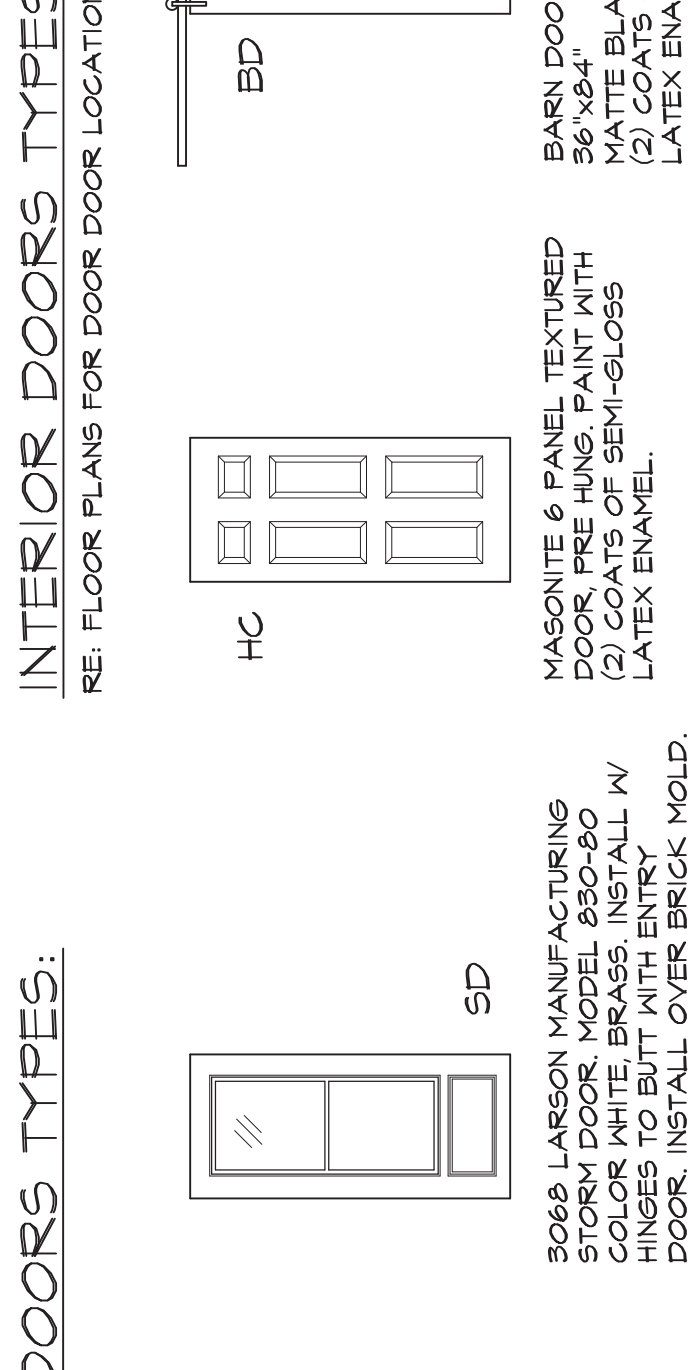


TYPE #1
TWO PIECE STEEL ASSEMBLY
FRAME-FACTORY PRIMED AND
PAINTED (2) COATS OF SEMI-GLOSS
LATEX ENAMEL.
EXTERIOR BRICK MOLD VINYL COVERED
COMPOSITE.
RE: 36 AND 1 THIS SHEET

TYPE #2
PRE-HUNG FINGER JOINTED PINE FRAME,
PINE TRIM, 60% PVC-386 CASING, PINE AND
PINE TRIM, 60% PVC-386 TRACK AND
HARDWARE BY MANUFACTURER.

TYPE #3
GYPSUM BOARD UNRAINED OPENING,
PINE TRIM, 60% PVC-386 TRACK AND
HARDWARE BY MANUFACTURER.

WINDOW TYPES:
RE: 3 AND 4, THIS SHEET FOR HEAD AND SILL SECTIONS.
RE: 5, THIS SHEET FOR WINDOW INSTALLATION DETAIL.



TYPE #1
FIBERGLASS
HORIZONTAL SLIDER
COLOR TO BE
SELECTED FROM
MANUFACTURERS
COLOR RANGE, RE:
SPECIFICATIONS,
TEMPERED
WITH INSECT SCREEN

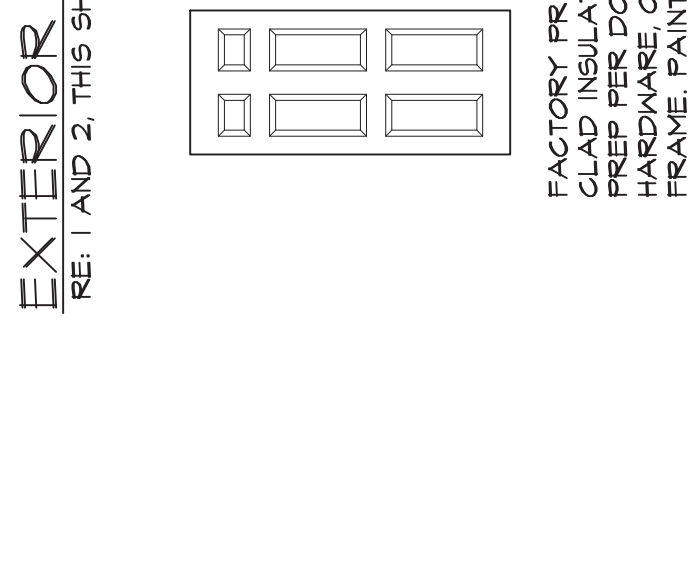
TYPE #2
FIBERGLASS
HORIZONTAL SLIDER
COLOR TO BE
SELECTED FROM
MANUFACTURERS
COLOR RANGE, RE:
SPECIFICATIONS,
TEMPERED

TYPE #3
FIBERGLASS
HORIZONTAL SLIDER
COLOR TO BE
SELECTED FROM
MANUFACTURERS
COLOR RANGE, RE:
SPECIFICATIONS,
TEMPERED

TYPE #4
FIBERGLASS
HORIZONTAL SLIDER
COLOR TO BE
SELECTED FROM
MANUFACTURERS
COLOR RANGE, RE:
SPECIFICATIONS,
TEMPERED

TYPE #5
FIBERGLASS
HORIZONTAL SLIDER
COLOR TO BE
SELECTED FROM
MANUFACTURERS
COLOR RANGE, RE:
SPECIFICATIONS,
TEMPERED

DOOR HARDWARE



SET A (FRONT BACK ENTRY DOORS).
DEADBOLT, 603, E 603 REMOVABLE CORE, FIO ELAN PASSAGE,
PRE-HUNG HINGES BY MFG. DUMM TRIM FIO ELAN,
ADA APPROVED THRESHOLD, ROCKWOOD #630 VIEWER,
INSTALL VIEWER AT 60" A.F.F.
STORM DOOR TO HAVE FACTORY HARDWARE.

SET B (BEDROOMS, CLOSET WITH SINGLE DOOR).
PRE-HUNG HINGES BY MFG. FIO ELAN 603, PASSAGE STOP
F40 ELAN, 603 PRIVACY STOP.

SET C (TOILET & BATH ROOMS).
SET D (CLOSETS WITH DOUBLE DOORS).
PRE-HUNG HINGES BY MFG. DUMM TRIM FIO ELAN,
ONE FLOOR AND ONE HINGE STOP
ONE FLOOR AND ONE HINGE STOP

SET E (EXTERIOR STORAGE AND WATER ENTRY DOORS).
DEADBOLT, 603, E 603 REMOVABLE CORE, FIO ELAN PASSAGE,
WEATHER STRIP STOP, 1/2" PAIR HINGES
AT MANUFACTURER'S RECOMMENDATION
RE: INTERIOR DOOR TYPES
HARDWARE BY MANUFACTURER, COLOR BLACK,
AT DOORS STOP, ROCKWOOD 1/2"
BASE, DOME STOP #442, 603,
UNLESS CALLED OUT OTHERWISE.

DOOR NOTES:

DOORS AND FRAMES:
DOORS AND FRAMES TO BE SELECTED
FROM THE MANUFACTURERS TOTAL COLOR RANGE,
RE: SPECIFICATIONS

ENAMEL (EN)
REMOVE MANUFACTURE COLOR TO BE SELECTED
FROM THE MANUFACTURERS TOTAL COLOR RANGE,
RE: SPECIFICATIONS

NOTE: CONTRACTOR TO ALLOW FOR (4) EXTERIOR BUILDING
FRAMES WITH WEATHER-STRIPPING
INTERIOR OF DOORS AND FRAMES TO MATCH LEI.

WINDOW NOTES:

WINDOW TYPES:
WINDOW TYPES TO BE SELECTED
FROM THE MANUFACTURERS TOTAL COLOR RANGE,
RE: SPECIFICATIONS

DOOR HARDWARE

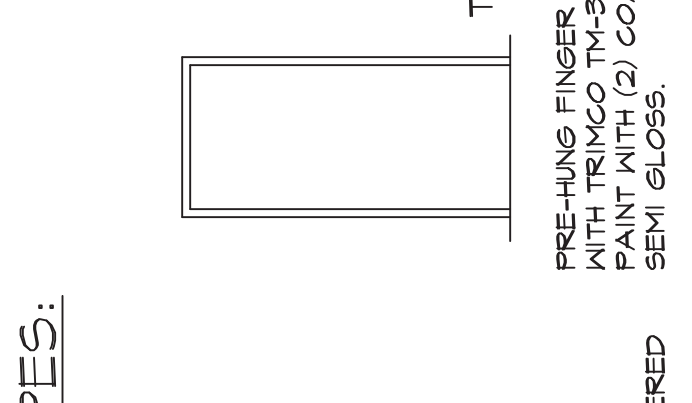
SET A (FRONT BACK ENTRY DOORS).
DEADBOLT, 603, E 603 REMOVABLE CORE, FIO ELAN PASSAGE,
PRE-HUNG HINGES BY MFG. DUMM TRIM FIO ELAN,
ADA APPROVED THRESHOLD, ROCKWOOD #630 VIEWER,
INSTALL VIEWER AT 60" A.F.F.
STORM DOOR TO HAVE FACTORY HARDWARE.

SET B (BEDROOMS, CLOSET WITH SINGLE DOOR).
PRE-HUNG HINGES BY MFG. FIO ELAN 603, PASSAGE STOP
F40 ELAN, 603 PRIVACY STOP.

SET C (TOILET & BATH ROOMS).
SET D (CLOSETS WITH DOUBLE DOORS).
PRE-HUNG HINGES BY MFG. DUMM TRIM FIO ELAN,
ONE FLOOR AND ONE HINGE STOP
ONE FLOOR AND ONE HINGE STOP

SET E (EXTERIOR STORAGE AND WATER ENTRY DOORS).
DEADBOLT, 603, E 603 REMOVABLE CORE, FIO ELAN PASSAGE,
WEATHER STRIP STOP, 1/2" PAIR HINGES
AT MANUFACTURER'S RECOMMENDATION
RE: INTERIOR DOOR TYPES
HARDWARE BY MANUFACTURER, COLOR BLACK,
AT DOORS STOP, ROCKWOOD 1/2"
BASE, DOME STOP #442, 603,
UNLESS CALLED OUT OTHERWISE.

WINDOW INSTALLATION DETAIL



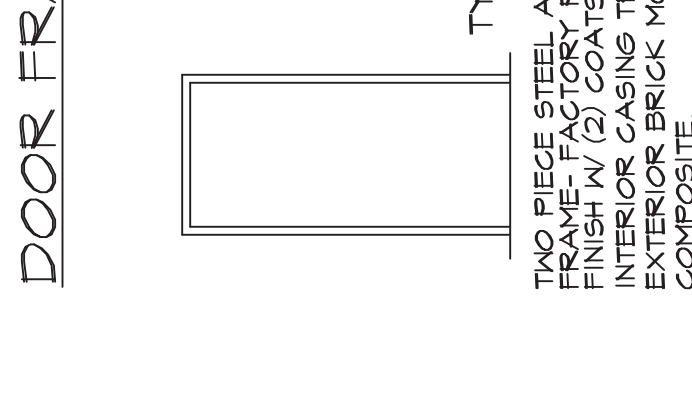
1 PREPARE THE HOUSE WRAP AT THE
ROUGH OPENING ON HOUSE WRAP AT
FOLD UP AT HEADER, AT JAMBES AND
FACE OF THE WALL.

2 INSTALL PAN FLASHING,
USE ANGLERS SHIELD COVER
OVER WINDOW FLANGE AND PAN FLASHING
AND EXTEND ABOVE THE HEAD FLANGE.

3 INSTALL THE WINDOW, ACCORDING
TO MANUFACTURERS INSTALLATION,
FOLD DOWN THE HOUSE WRAP AND TAPE
(AND OVER DRIP CAP IF INSTALLED).

4 INTEGRATE THE HOUSE WRAP,
FOLD DOWN THE HOUSE WRAP AND TAPE
DIAGONAL SEAMS WITH CONSTRUCTION
TAPE.

EXTERIOR DOOR THRESHOLD



1 5/8" GYPSUM BOARD ON VAPOR BARRIER
ON 2X6 FRAMING.
RE: FINISH SCHEDULE FOR TEXTURE
AND PAINT.

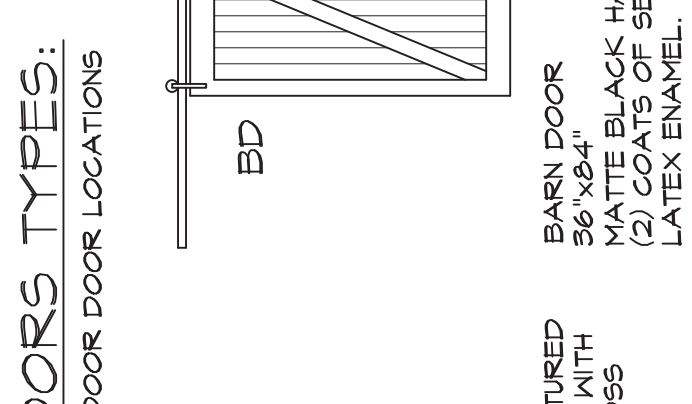
2 RUN GYPSUM BOARD BETWEEN GYPSUM BOARD
AND FRAMING ALL AROUND WINDOW.
5/8" GYPSUM BOARD ON VAPOR BARRIER
ON FINISH SCHEDULE FOR TEXTURE
AND WALL FINISH.

3 MRAP 5/8" GYPSUM BOARD AT JAMBES,
1" MINI BLINDS, RE: SPECIFICATIONS

4 TYPICAL WINDOW HEAD SECTION
SCALE: 3" = 1'-0"

5 TYPICAL WINDOW SILL SECTION
SCALE: 3" = 1'-0"

EXTERIOR DOOR THRESHOLD



1 5/8" GYPSUM BOARD ON VAPOR BARRIER
ON 2X6 FRAMING.
RE: FINISH SCHEDULE FOR TEXTURE
AND PAINT.

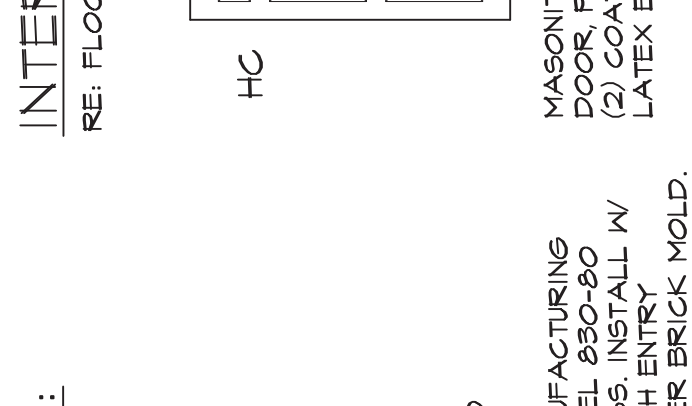
2 RUN GYPSUM BOARD BETWEEN GYPSUM BOARD
AND FRAMING ALL AROUND WINDOW.
5/8" GYPSUM BOARD ON VAPOR BARRIER
ON FINISH SCHEDULE FOR TEXTURE
AND WALL FINISH.

3 MRAP 5/8" GYPSUM BOARD AT JAMBES,
1" MINI BLINDS, RE: SPECIFICATIONS

4 TYPICAL WINDOW HEAD SECTION
SCALE: 3" = 1'-0"

5 TYPICAL WINDOW SILL SECTION
SCALE: 3" = 1'-0"

EXTERIOR DOOR THRESHOLD



1 5/8" GYPSUM BOARD ON VAPOR BARRIER
ON 2X6 FRAMING.
RE: FINISH SCHEDULE FOR TEXTURE
AND PAINT.

2 RUN GYPSUM BOARD BETWEEN GYPSUM BOARD
AND FRAMING ALL AROUND WINDOW.
5/8" GYPSUM BOARD ON VAPOR BARRIER
ON FINISH SCHEDULE FOR TEXTURE
AND WALL FINISH.

3 MRAP 5/8" GYPSUM BOARD AT JAMBES,
1" MINI BLINDS, RE: SPECIFICATIONS

4 TYPICAL WINDOW HEAD SECTION
SCALE: 3" = 1'-0"

5 TYPICAL WINDOW SILL SECTION
SCALE: 3" = 1'-0"

EXTERIOR DOOR THRESHOLD



1 5/8" GYPSUM BOARD ON VAPOR BARRIER
ON 2X6 FRAMING.
RE: FINISH SCHEDULE FOR TEXTURE
AND PAINT.

2 RUN GYPSUM BOARD BETWEEN GYPSUM BOARD
AND FRAMING ALL AROUND WINDOW.
5/8" GYPSUM BOARD ON VAPOR BARRIER
ON FINISH SCHEDULE FOR TEXTURE
AND WALL FINISH.

3 MRAP 5/8" GYPSUM BOARD AT JAMBES,
1" MINI BLINDS, RE: SPECIFICATIONS

4 TYPICAL WINDOW HEAD SECTION
SCALE: 3" = 1'-0"

5 TYPICAL WINDOW SILL SECTION
SCALE: 3" = 1'-0"

EXTERIOR DOOR THRESHOLD



1 5/8" GYPSUM BOARD ON VAPOR BARRIER
ON 2X6 FRAMING.
RE: FINISH SCHEDULE FOR TEXTURE
AND PAINT.

2 RUN GYPSUM BOARD BETWEEN GYPSUM BOARD
AND FRAMING ALL AROUND WINDOW.
5/8" GYPSUM BOARD ON VAPOR BARRIER
ON FINISH SCHEDULE FOR TEXTURE
AND WALL FINISH.

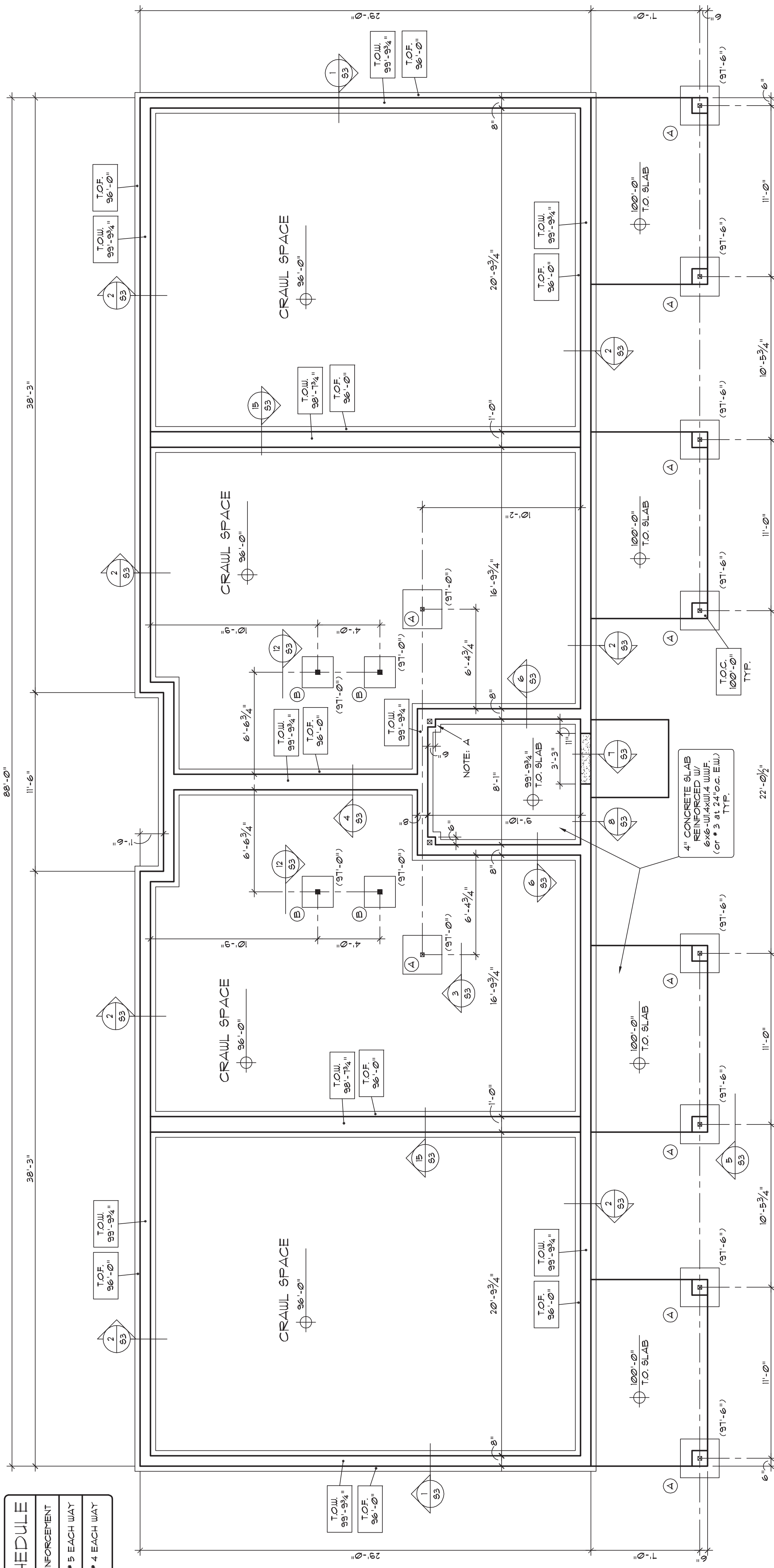
3 MRAP 5/8" GYPSUM BOARD AT JAMBES,
1" MINI BLINDS, RE: SPECIFICATIONS

4 TYPICAL WINDOW HEAD SECTION
SCALE: 3" = 1'-0"

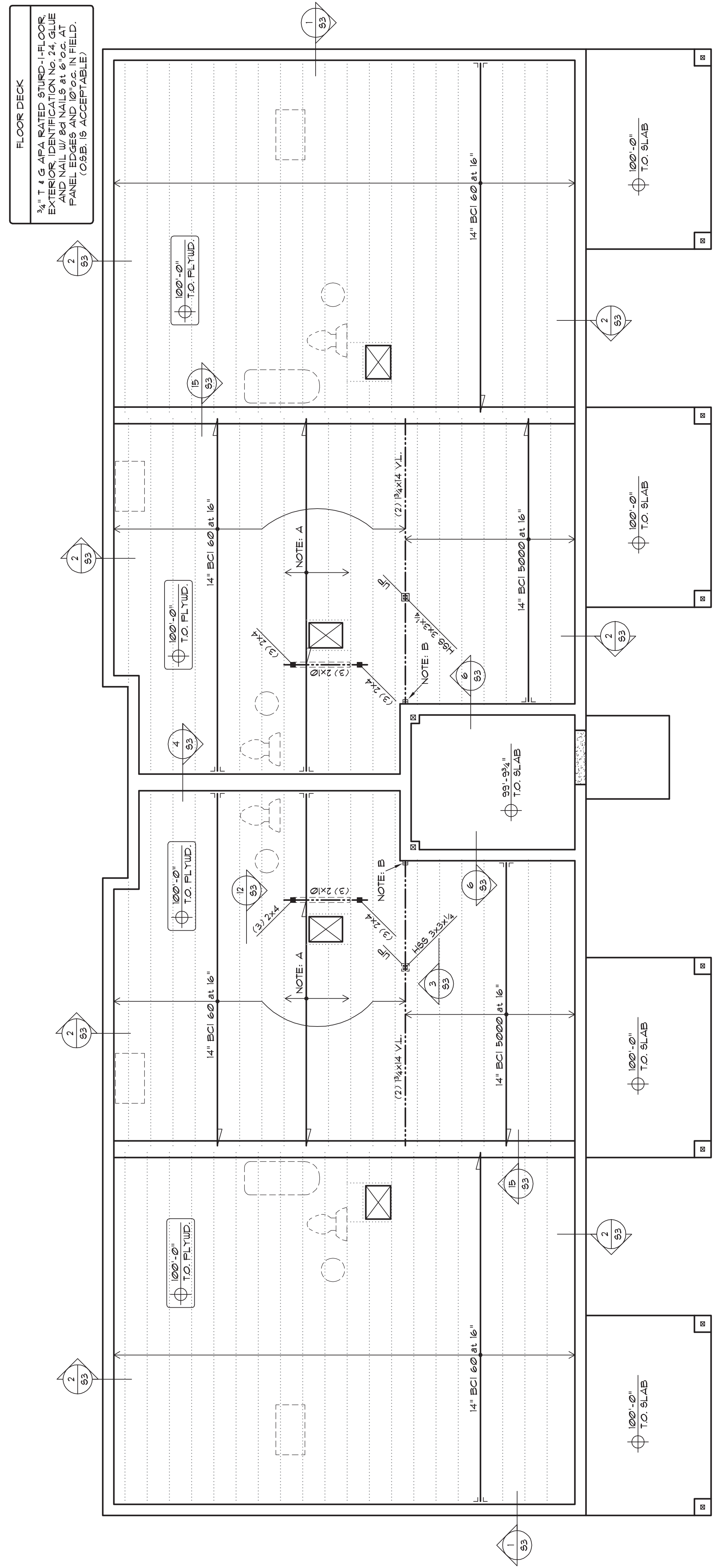
5 TYPICAL WINDOW SILL SECTION
SCALE: 3" = 1'-0"

PAD FOOTING SCHEDULE	
MARK	SIZE
(A)	2'-6" x 2'-6" x 1'-0"
(B)	2'-0" x 2'-0" x 1'-0"

REINFORCEMENT	
(3) * 5 EACH WAY	
(3) * 4 EACH WAY	



FLOOR DECK
3/4" x 6" APART 81RD-1 FLOOR PANELS WITH 8D NAILS AT 6" O.C. AT PANEL EDGES AND 12" O.C. IN FIELD. (OSB IS ACCEPTABLE)



NOTES:
A) 14" BCI 5000 AT 16" O.C.
B) BEAR BEAM ON (2) 2x6 TREATED BEAR ON FOOTING AND ATTACH TO WALL W/ POWER DRIVEN FASTENERS.

MAIN FLOOR FRAMING PLAN
SCALE: 1/4"=1'-0"

DRAWING INDEX

REVISIONS	DATE	BY	DESCRIPTION
1	02/23/2011	AD	ISSUED FOR CONSTRUCTION
2	02/23/2011	AD	ISSUED FOR REFERENCE ONLY, NOT FOR CONSTRUCTION

NUMBER	DRAWING TITLE
01	DRAWING INDEX, GENERAL NOTES, LEGENDS AND SCHEDULES
02	FIRST AND SECOND FLOOR - BUILDING E - HVAC

DUCT SYSTEM NOTES

- ALL DUCTWORK UNLESS SPECIFICALLY INDICATED SHALL BE GALVANIZED SHEET METAL INSTALLED IN ACCORDANCE WITH THE SHADNA DUCT CONSTRUCTION STANDARDS. SEAL CLASS B. PRESURE CLASS 1.2. SEALS SHALL BE MADE FOR DUCT L INER WHERE CALLED FOR. DIMENSIONS SHOWN ARE NET CLEAR INSIDE DIMENSIONS. ALLOWANCES MUST BE MADE FOR DUCT L INER WHERE CALLED FOR.
- ALL SUPPLY DUCTWORK SHALL HAVE ALL JOINTS SEALED WITH "HARDCAST" OR EQUAL DUCT SEALER/MASTIC.
- ALL CONCEALED ROUND SUPPLY AIR DUCTS 12" AND SMALLER SHALL BE GALVANIZED SHEET METAL SNAP-LOCK. ROUND SUPPLY DUCT GREATER THAN 12" SHALL BE GALVANIZED SHEET METAL SPIRAL. PROVIDE FIBERGLASS INSULATION UNLESS OTHERWISE SPECIFIED. INSULATED FLEXIBLE DUCT MAY BE USED FOR THE CONNECTION TO THE AIR OUTLET PROVIDED THE LENGTH OF THE FLEXIBLE DUCT DOES NOT EXCEED 6' LINEAR FEET.
- FACTORY MADE AIR DUCTS SHALL CONFORM TO UL 181 AND INCLUDE APPROPRIATE LABEL. FLEXIBLE DUCTWORK SHALL BE APPROVED CLASS 0 OR CLASS 1. LENGTH NOT TO EXCEED 6'-0".
- ALL BRANCH DUCT CONNECTIONS TO AIR OUTLETS AND AIR INLETS SHALL BE THE SAME SIZE AS THE DEVICE NECK UNLESS SHOWN OTHERWISE ON THE DRAWINGS.
- ALL ENVIRONMENTAL AIR EXHAUST DUCTS SHALL BE SEALED WITH "HARDCAST" OR EQUAL.
- DUCT HANGERS SHALL BE A MINIMUM 1/2" X 26 GAUGE GALVANIZED STEEL.
- PROVIDE SINGLE THICKNESS TURNING VANES IN ALL SQUARE AND RECTANGULAR ELBOUS IN SUPPLY, RETURN SYSTEMS.
- ALL FIRE DAMPERS SHALL BE LABELED FOR USE IN DYNAMIC SYSTEMS UNLESS OTHERWISE SPECIFIED.

GENERAL NOTES - HVAC

- RESOLVE ALL QUESTIONS OR CONFLICTS WITH ENGINEERS BEFORE ANY EQUIPMENT IS ORDERED. MATERIALS FABRICATED OR SYSTEMS INSTALLED.
- COORDINATE THE INSTALLATION OF MECHANICAL SYSTEMS WITH OTHER TRADES ESPECIALLY STRUCTURAL, PLUMBING, ELECTRICAL AND ARCHITECTURAL CEILING HEIGHTS.
- COORDINATE ALL PENETRATIONS THROUGH STRUCTURAL MEMBERS WITH THE GENERAL CONTRACTOR.
- COORDINATE AND VERIFY THAT ALL OPENINGS IN WALLS ABOVE CEILING / DOOR LOUVERS / DOOR UNDERCUTS ARE PROVIDED AS INDICATED ON THESE DRAWINGS.
- LEVEL ALL EQUIPMENT CURBS / BASES PRIOR TO INSTALLATION OF ANY EQUIPMENT. INSTALL FULL SIZE CONDENSATE DRAIN WITH TRAP SEAL ABOVE THE EQUIPMENT. PROVIDE SLOPE FOR EACH COOLING COIL. ENSURE THAT THE TOP OF GROUND MOUNTED EQUIPMENT FADS ARE AT LEAST 3" ABOVE FINAL GRADE.
- PROVIDE OFFSETS AS NECESSARY TO ACCOMMODATE STRUCTURE AND OTHER TRADES.
- SEAL ALL ROOF PENETRATIONS WATER TIGHT WITH SEALANT/CALKING OR SYSTEM COMPATIBLE WITH ROOFING.
- ALL PIPING PENETRATIONS THROUGH FLOORS SHALL BE SEALED WATER TIGHT BY GROUTING FEMTER GAP BETWEEN PIPE AND FLOOR APPROVED SEALANT.
- MATERIALS EXPOSED IN PLUMBING SHALL HAVE A FLAME SPREAD INDEX OF NOT MORE THAN 25 AND A SMOKE DEVELOPED RATING OF NOT MORE THAN 100.
- BIRD SCREEN UNLESS OTHERWISE SPECIFIED SHALL BE 1/4" STEEL MESH.
- INSTALLATION SHALL CONFORM TO THE REQUIREMENTS OF THE 2005 INTERNATIONAL MECHANICAL CODE APPLICABLE SECTIONS OF THE INTERNATIONAL BUILDING CODE AND APPLICABLE SECTIONS OF THE PUEBLO BUILDING CODE.

CONDENSING UNIT AND DX COOLING COIL SCHEDULE

NOTES: 1) PROVIDE REFRIGERATION PIPING ACCORDING TO MANUFACTURERS RECOMMENDATIONS. 2) SCROLL COMPRESSOR. 3) 1/8" BEER. 4) R-410A REFRIGERANT. 5) CURVED LOUVER PANELS. 6) LIQUID LINE 1/2". SUCTION LINE 3/4".

TAG	MANUFACTURER	CU MODEL	NOMINAL TONS	ELECTRICAL VOLTS/PH	MCA	KCP	WEIGHT (LBS)	SERVES	NOTES
CU-01	CARRIER	24ANB630A003	15	230/1	11.1	20	84	FC-01, 04	1, 2, 3, 4, 5, 6, 7
CU-02	CARRIER	24ANB630A003	2.0	230/1	11.5	25	196	FC-02, 05	1, 2, 3, 4, 5, 6, 7
CU-03	CARRIER	24ANB630A003	2.5	230/1	18	25	193	FC-03, 06	1, 2, 3, 4, 5, 6, 7

EXHAUST FAN SCHEDULE

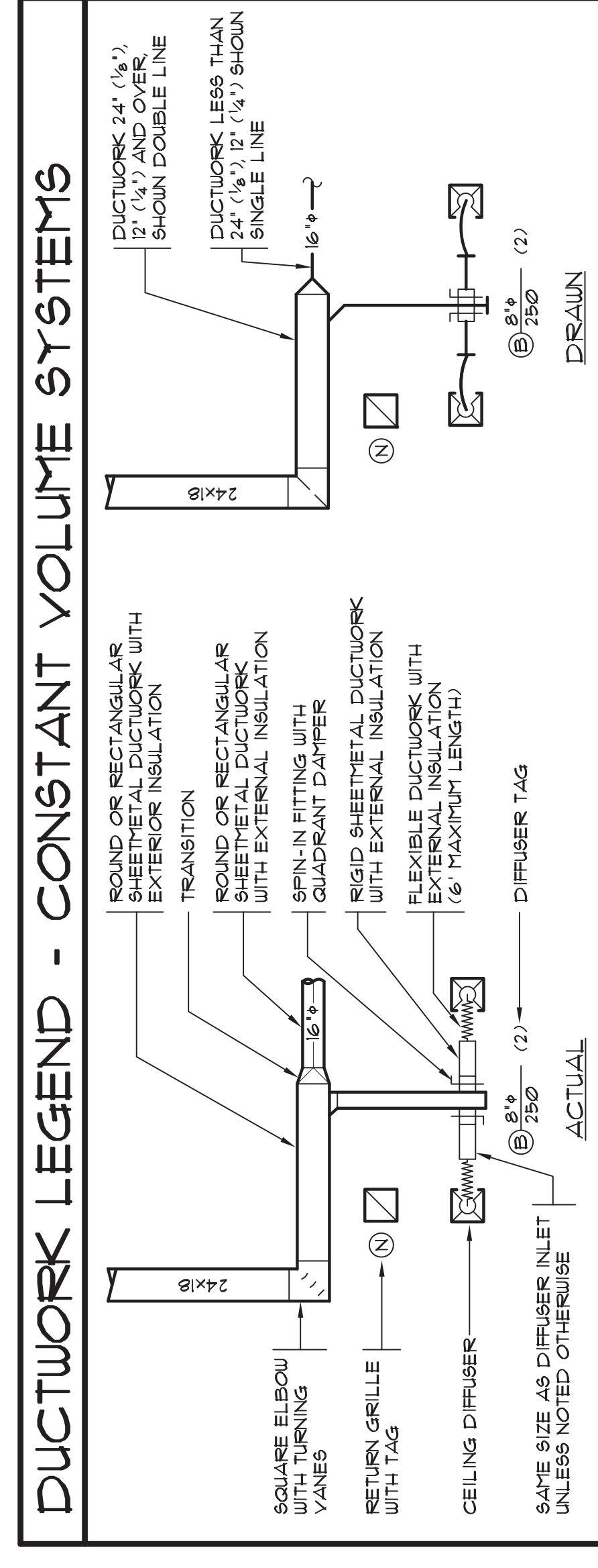
NOTES: 1) INCLUDES WHITE PLASTIC GRILLE. 2) MEETS ENERGY STAR RATINGS AND ASHRAE STD 62.2. 3) BACKDRAFT DAMPER. 4) INCLUDE MULTI-SPEED MODULE. 5) SWITCH WITH LIGHT SWITCH. 6) CONTINUOUS VENTILATION.

TAG	MANUF.	MODEL	CFM	ESP INCH WC	TYPE	DRIVE	BORES	WATTS	VOLTS/PH	NOTES
EF-01	PANASONIC	FV-05-TV1K1	30/80	0.40	CEILING	DIRECT	5	25	120/1	1, 2, 3, 4, 5, 6

RANGE HOOD SCHEDULE

NOTES: 1) INCLUDE BACKDRAFT DAMPER. 2) 36" WIDTH. 3) 75 WATT LIGHT. 4) 2-SPEED. 5) OWNER TO CHOOSE COLOR.

TAG	MANUFACTURER	MODEL	TYPE	CFM	BORES	VOLTS/PH	MCA	NOTES
RH-01	BROAN	413000	TVA VENTED	190	60	120/1	2.9	1, 2, 3, 4, 5



LEGEND (NOT ALL ITEMS WILL BE USED)

SYMBOL	DESCRIPTION
HUB	HOT WATER SUPPLY AND RETURN PIPING
CHUB	CHILLED WATER SUPPLY AND RETURN PIPING
CHS, CHR	UNION FLANGE BLIND FLANGE
SOV	SOV GATE VALVE BALL VALVE GLOBE VALVE BUTTERFLY VALVE
STR	CHECK VALVE STRAINER
PLV	LUBRICATED PLUG VALVE BALANCING VALVE
PEE	PIPE ELBOW DOWN, PIPE TEE DOWN, PIPE TEE UP, PIPE ELBOW UP
PGS	PIPE ANCHOR, PIPE GUIDE, PIPE SLEEVE
PEJ	FLEX CONNECTION, PIPE EXPANSION JOINT
SDV	SQUARE DUCT ELBOW WITH TURNING VANES
DOA	DOWN AND BACK UP UNDER BEAM OR OBSTACLE
RAA	SUPPLY AIR RETURN/OUTSIDE AIR AND EXHAUST AIR
RDV	DUCTWORK UNLINED AND DUCTWORK LINED
FLD	FLEXIBLE AND RIGID ROUND DUCT
DRD	DUCTWORK TO BE REMOVED
FRD	FIRE SMOKE, COMBINATION FIRE AND SMOKE, RADIATION SMOKE AND RADIATION DAMPERS
BDV	BAROMETRIC MOTORIZED AND MANUAL DAMPERS SMOKE DETECTOR
PSV	PRESSURE DIFFERENTIAL SWITCH
THD	THERMOSTAT, HUMIDISTAT, TEMPERATURE TRANSMITTER, CARBON MONOXIDE OR CARBON DIOXIDE SENSOR
CON	WORK NOTE 1, REVISION NO. 1, DEPOLITON NOTE 1, POINT OF CONNECTION
RAA, EA, OA	SUPPLY AIR, RETURN AIR, EXHAUST AIR, OUTSIDE AIR
SECTION A ON SHEET M-1	DIAGRAM 1 ON SHEET M-1
RISE R-1 ON SHEET M-1	RISE R-1 ON SHEET M-1
EQUIPMENT TAG	EQUIPMENT TAG
EQUIPMENT TYPE	EQUIPMENT TYPE
EQUIPMENT NUMBER	EQUIPMENT NUMBER

FAN COIL SCHEDULE

NOTES: 1) UPFLOW CONFIGURATION. 2) DOWN FLOW CONFIGURATION. 3) DISPOSABLE FILTER. 4) 1/2" MOTOR ON BLOWER. 5) MICRO-PROCESSOR CIRCUIT BOARD. 6) FACTORY THIRTEENTH AND FIFTEENTH HOUR OPERATING TIMES. 7) 1/2" INSULATION. 8) 1/2" INSULATION. 9) 1/2" INSULATION. 10) 1/2" INSULATION. 11) 1/2" INSULATION. 12) 1/2" INSULATION. 13) 1/2" INSULATION. 14) 1/2" INSULATION. 15) 1/2" INSULATION. 16) 1/2" INSULATION. 17) 1/2" INSULATION. 18) 1/2" INSULATION. 19) 1/2" INSULATION. 20) 1/2" INSULATION. 21) 1/2" INSULATION. 22) 1/2" INSULATION. 23) 1/2" INSULATION. 24) 1/2" INSULATION. 25) 1/2" INSULATION. 26) 1/2" INSULATION. 27) 1/2" INSULATION. 28) 1/2" INSULATION. 29) 1/2" INSULATION. 30) 1/2" INSULATION. 31) 1/2" INSULATION. 32) 1/2" INSULATION. 33) 1/2" INSULATION. 34) 1/2" INSULATION. 35) 1/2" INSULATION. 36) 1/2" INSULATION. 37) 1/2" INSULATION. 38) 1/2" INSULATION. 39) 1/2" INSULATION. 40) 1/2" INSULATION. 41) 1/2" INSULATION. 42) 1/2" INSULATION. 43) 1/2" INSULATION. 44) 1/2" INSULATION. 45) 1/2" INSULATION. 46) 1/2" INSULATION. 47) 1/2" INSULATION. 48) 1/2" INSULATION. 49) 1/2" INSULATION. 50) 1/2" INSULATION. 51) 1/2" INSULATION. 52) 1/2" INSULATION. 53) 1/2" INSULATION. 54) 1/2" INSULATION. 55) 1/2" INSULATION. 56) 1/2" INSULATION. 57) 1/2" INSULATION. 58) 1/2" INSULATION. 59) 1/2" INSULATION. 60) 1/2" INSULATION. 61) 1/2" INSULATION. 62) 1/2" INSULATION. 63) 1/2" INSULATION. 64) 1/2" INSULATION. 65) 1/2" INSULATION. 66) 1/2" INSULATION. 67) 1/2" INSULATION. 68) 1/2" INSULATION. 69) 1/2" INSULATION. 70) 1/2" INSULATION. 71) 1/2" INSULATION. 72) 1/2" INSULATION. 73) 1/2" INSULATION. 74) 1/2" INSULATION. 75) 1/2" INSULATION. 76) 1/2" INSULATION. 77) 1/2" INSULATION. 78) 1/2" INSULATION. 79) 1/2" INSULATION. 80) 1/2" INSULATION. 81) 1/2" INSULATION. 82) 1/2" INSULATION. 83) 1/2" INSULATION. 84) 1/2" INSULATION. 85) 1/2" INSULATION. 86) 1/2" INSULATION. 87) 1/2" INSULATION. 88) 1/2" INSULATION. 89) 1/2" INSULATION. 90) 1/2" INSULATION. 91) 1/2" INSULATION. 92) 1/2" INSULATION. 93) 1/2" INSULATION. 94) 1/2" INSULATION. 95) 1/2" INSULATION. 96) 1/2" INSULATION. 97) 1/2" INSULATION. 98) 1/2" INSULATION. 99) 1/2" INSULATION. 100) 1/2" INSULATION.

TAG	MANUF.	MODEL	CFM	ESP INCH WC	HYDRONIC HEAT COIL MBH-OUT	BLOWER HP	INLET WATER HP	MCA	VOLTS/PH	MAX RISE	WEIGHT LBS	NOTES
FC-01	AIR*ARK	GF1 18/15	650	0.3	3.05	1/3	1/40	14.0	4.1	18/15	100	13,45.6; 18.0; 11
FC-02	AIR*ARK	GF1 24/25	800	0.3	3.5	1/3	1/40	14.0	4.1	18/15	100	13,45.6; 18.0; 11
FC-03	AIR*ARK	GF1 30/31	1050	0.3	3.5	1/2	1/40	14.0	7.4	18/15	120	13,45.6; 18.0; 11
FC-04	AIR*ARK	GF1 18/15	650	0.3	3.05	1/3	1/40	14.0	4.1	18/15	100	2,3,4,5,6; 18.0; 11/12
FC-05	AIR*ARK	GF1 24/25	800	0.3	3.5	1/3	1/40	14.0	4.1	18/15	100	2,3,4,5,6; 18.0; 11/12
FC-06	AIR*ARK	GF1 30/31	1050	0.3	3.5	1/2	1/40	14.0	7.4	18/15	120	2,3,4,5,6; 18.0; 11/12

ELECTRIC HEATER SCHEDULE

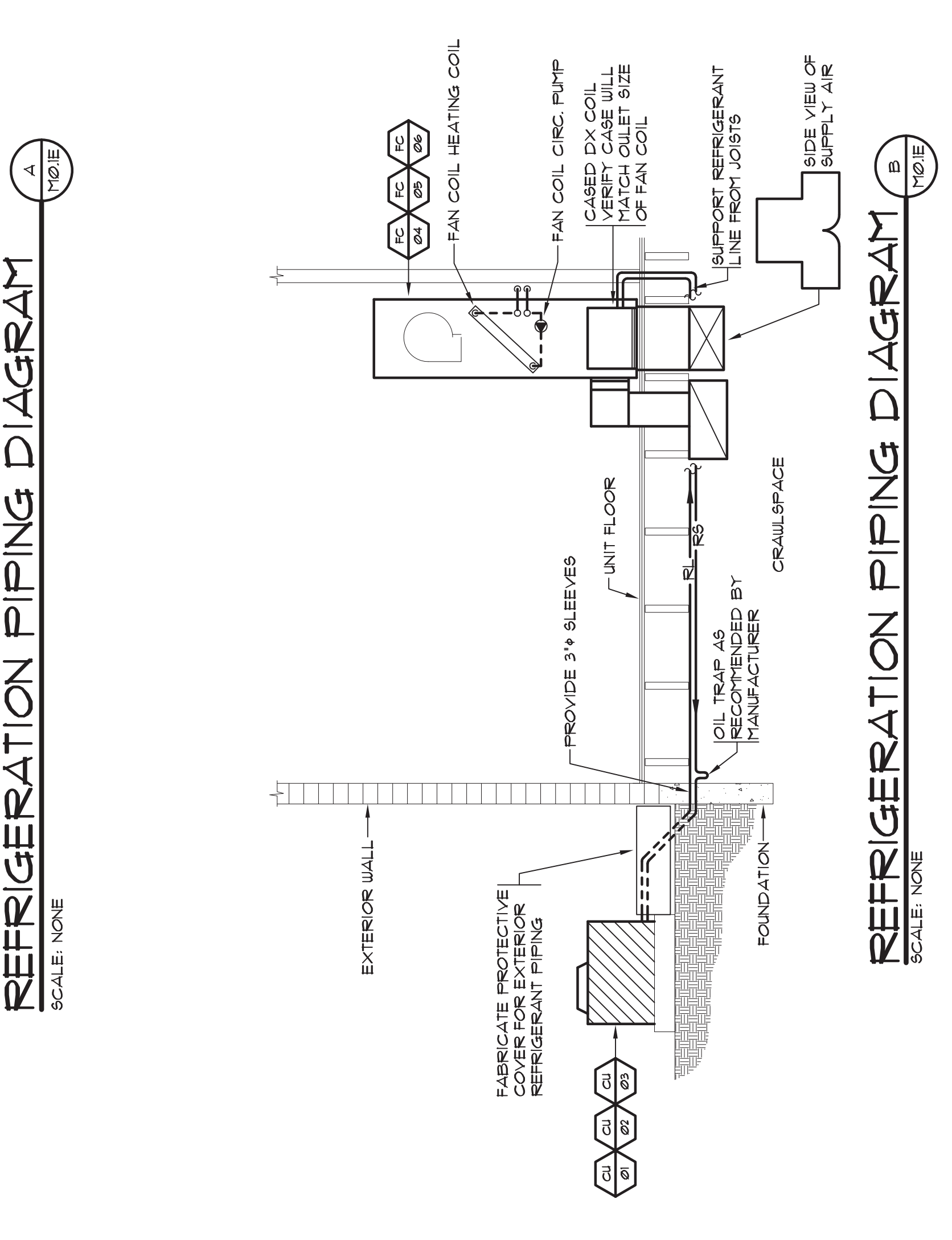
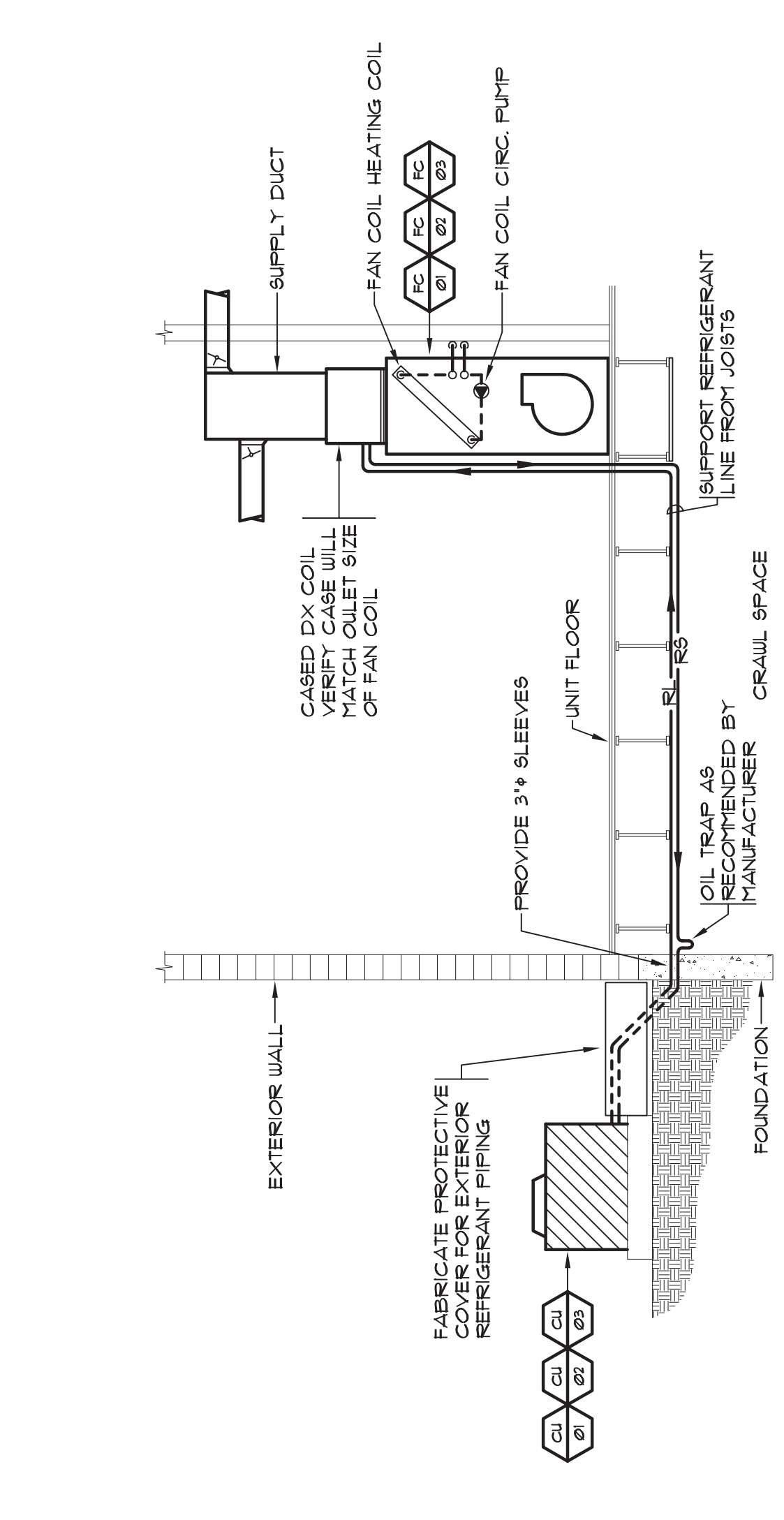
NOTES: 1) INTEGRAL THERMOSTAT. 2) 80% RECIRCULATED MOUNT. 3) DISCONNECT SWITCH. 4) MOUNT 12" AFF. 5) HEAVY DUTY GRILLE.

TAG	MANUFACTURER	MODEL	KW	BTU	VOLTS/PH	NOTES
EH-01	RATWALL	E3321D-RP	15	5100	120/1	1, 2, 3, 4

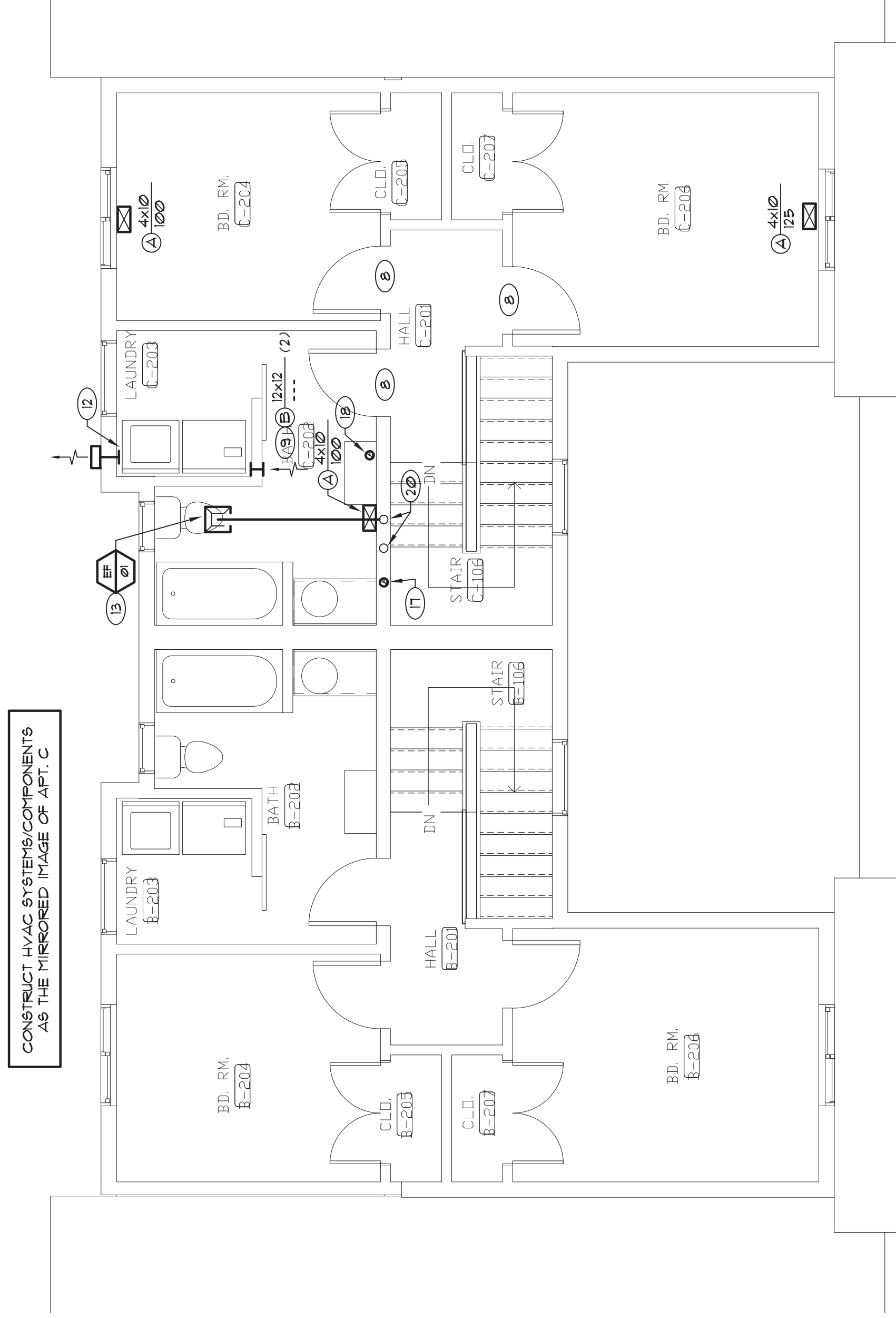
GRILLE, REGISTER, AND DIFFUSER SCHEDULE

NOTES: 1) STANDARD FACTORY BROUW FINISH. 2) VOLUME DAMPER. 3) SEE DRAWINGS FOR NECK SIZE AND AIR QUANTITY.

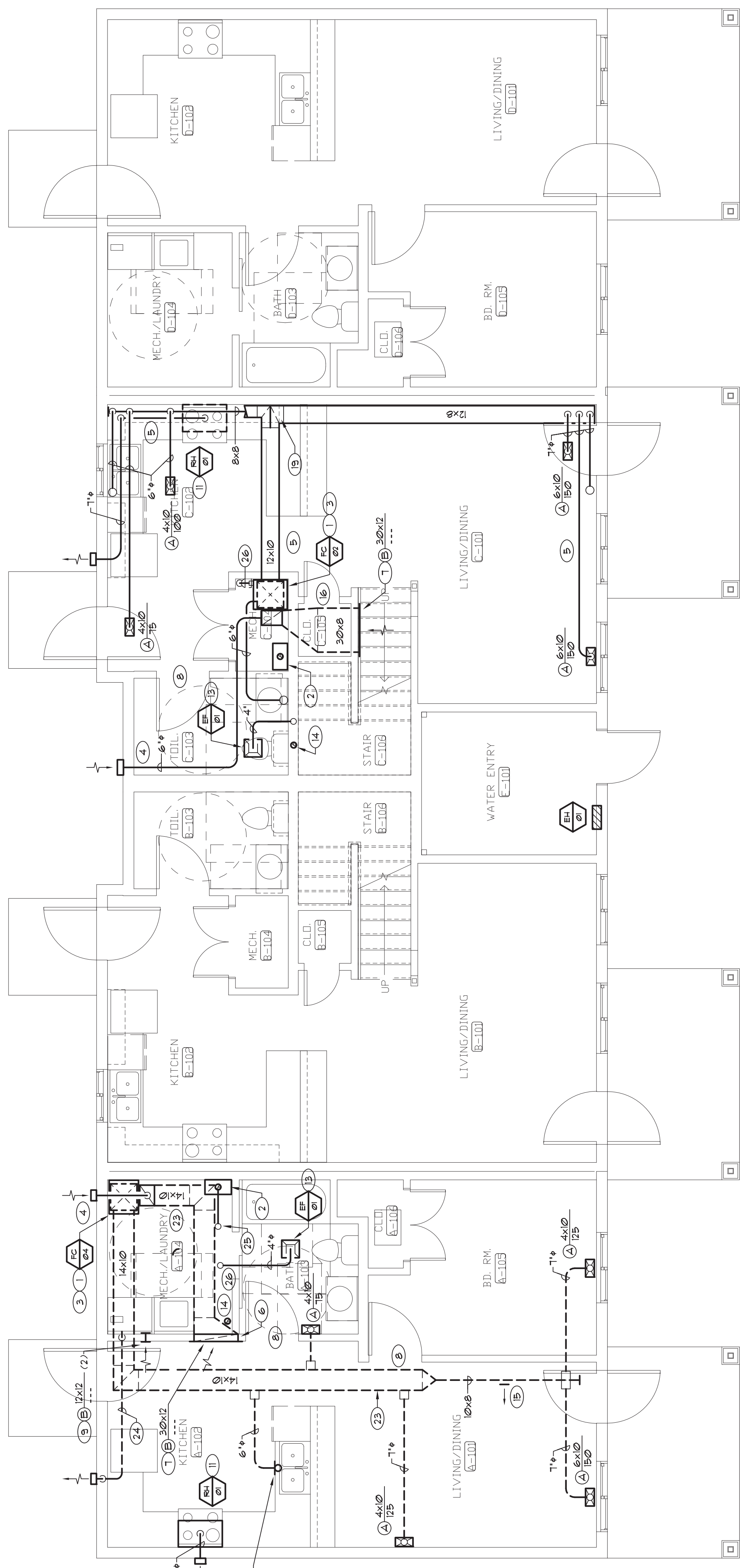
TAG	MANUF.	MODEL	DESCRIPTION	NOTES
A	HART & COOLEY	4120/41	SUPPLY DIFFUSER, 2-WAY DEFLECTION, STEEL CONSTRUCTION, FLOOR MOUNT	1, 2, 3
B	HART & COOLEY	650	RETURN GRILLE, 35° DEFLECTION, 1/2" SPACING, STEEL CONSTRUCTION, SIDEWALL MOUNT	1, 3



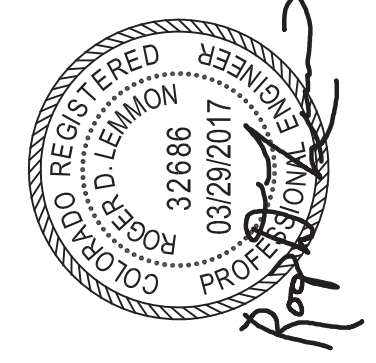
- WORK NOTES (THIS SHEET ONLY)**
- FAN COIL UNIT TO BE SUPPLIED BY MECHANICAL (HVAC) CONTRACTOR. COORDINATE WITH PLUMBING CONTRACTOR FOR PIPING CONNECTIONS. INSTALL PER MANUFACTURER'S RECOMMENDATIONS.
 - TANKLESS WATER HEATER TO BE VENTED THROUGH THE ROOF BY PLUMBING CONTRACTOR USING CENTRIC WATER HEATER VENT KIT. VENT TERMINATE TO EXTERIOR ACCORDING TO MANUFACTURER'S RECOMMENDATIONS.
 - FAN COIL UNIT HAS A HYDRONIC HEATING COIL. SEE PIPING DIAGRAM AND PLUMBING DRAWINGS FOR CONNECTION REQUIREMENTS TO TANKLESS WATER HEATER.
 - 6" INSULATED O.A. DUCT RUNNING HIGH TO THE OUTSIDE WALL. TERMINATE WITH A WEATHER CAP. THIS MUST BE 10 FEET AWAY FROM ANY EXHAUST.
 - ALL SA AND RA DUCTWORK TO BE ROUTED HIGH BETWEEN JOISTS WHERE POSSIBLE.
 - FAN JOISTS FOR RA OPENINGS.
 - POINT RA GRILLE HIGH IN WALL.
 - UNDERCUT DOOR BY APPROXIMATELY 1".
 - 12x12 TRANSFER AIR DUCT FOR DRYER. LOCATE HIGH IN WALL.
 - POINT IN CABINET TOE KICK.
 - INSTALL RANGE HOOD WITH DUCT TERMINATING HIGH ON OUTSIDE WALL WITH WEATHER CAP.
 - RAIN DRYER 4" VENT THROUGH THE WALL. TERMINATE WITH DRYER VENT CAP.
 - INSTALL ALL CONDENSING UNITS ACCORDING TO MANUFACTURER'S RECOMMENDATIONS. COORDINATE WITH ELECTRICAL FOR WALL SWITCH. RUNS CONTINUOUSLY ON LOW BUT WILL INCREASE TO HIGH WITH SWITCH.
 - INSTALL A 4" ROUND DUCT FROM THE CRAWL SPACE TO THE ROOF.
 - DROP A 4" DUCT INTO THE CRAWL SPACE FOR APPROXIMATELY 30 CFM.
 - RAN RA DUCT UP AGAINST STRUCTURE THEN FLAIR TO FIT RA GRILLE.
 - 4" DUCT FROM BELOW TO ROOF. TERMINATE WITH A ROOF CAP.
 - T. CONCENTRIC VENT FROM TANKLESS WATER HEATER TO ROOF. TERMINATE WITH RUBBER VENT, PART NO. 8416ZFP. RAN VENT THROUGH CABINET.
 - RAN DUCTWORK IN JOIST SPACE THEN DROP DOWN TO RAN IN SOFFIT.
 - RAN 4" EA DUCT UP THROUGH ROOF. TERMINATE WITH A WEATHER CAP.
 - SET THE CONDENSING UNIT ON A 3" LEVEL EQUIPMENT PAD.
 - PROVIDE LINE SETS, 8 FEET PER MANUFACTURER'S RECOMMENDATIONS. COVER BOTH LIQUID AND SUCTION LINES WITH CLOSED CELL INSULATION THEN WRAP WITH WATER PROOF COVER WHERE LINES ARE BURIED. SLEEVES APPROXIMATELY 8" BELOW GRADE WITH 1/2" DIAMETER PIPES.
 - ALL SA AND RA DUCTWORK TO BE ROOTED IN THE CRAWL SPACE. WRAP DUCT WITH 1/2" OF FIBERGLASS INSULATION WITH VAPOUR BARRIER.
 - RAN DRYER VENT IN CRAWL SPACE THEN UP IN OUTSIDE WALL TERMINATING 18" ABOVE GRADE WITH A DRYER VENT INTAKE. KEEP APPROXIMATELY 18" DISTANCE FROM OA INTAKE.
 - CREATE T. CONCENTRIC VENT FROM TANKLESS WATER HEATER TO ROOF. TERMINATE WITH RUBBER VENT, PART NO. 8416ZFP.
 - INSTALL A 3" SPIN-IN IN THE SA DUCT WITH A BALANCING DAMPER. THIS IS TO PROVIDE APPROXIMATELY 30 CFM OF SA FOR CRAWL SPACE VENTILATION. THIS MEETS THE 0.2% CRACK REQUIREMENT.



2nd FLOOR - BLDG E - HVAC
SCALE: 1/4" = 1'-0"



1st FLOOR - BLDG E - HVAC
SCALE: 1/4" = 1'-0"



LEGEND (NOT ALL ITEMS WILL BE USED)

ABBRE	SYMBOL	DESCRIPTION
SW, CU, NP		SOFT, COLD AND NON-POTABLE WATER PIPING
F		FIRE PROTECTION PIPING
HU, HUC		HOT WATER AND HOT WATER CIRCULATING PIPING
G		PRESSURE GAS PIPING
V, FOV		VENT AND FUEL OIL VENT PIPING
BS, GBS		SANITARY SEWER AND GREASE SANITARY SEWER PIPING
SD, OSD		STORM DRAIN AND OVERFLOW STORM DRAIN PIPING
RD, ORD		ROOF DRAIN, LEADER, OVERFLOW DRAIN, LEADER
FCO, UCO, COG		FLOOR CLEANOUT, WALL CLEANOUT AND CLEANOUT TO GRADE PIPING TO BE REMOVED
		UNION, FLANGE, BLIND, FLANGE
		SOVENT GATE VALVE, BALL VALVE, GLOBE VALVE, BUTTERFLY VALVE
		CHECK VALVE, STRAINER
		PLUG VALVE, CALIBRATED AND DYNAMIC BALANCING VALVES
		LUBRICATED PLUG VALVE
PRV		PRESSURE REDUCING VALVE
		THERMOSTATIC MIXING VALVE, SOLENOID AND TWO-WAY / MOTORIZED CONTROL VALVE
RPBP		REDUCED PRESSURE BACKFLOW PREVENTER
		ANGLE, RELIEF VALVE, GAUGE AND COOK THERMOMETER
		TEST PLUG
AAV / MAV, HEV		HOSE END DRAIN VALVE, AUTOMATIC AIR / MANUAL AIR VENT
HB, UH		HOSE BIBB FROSTPROOF WALL HYDRANT, DOWN SPOUT NOZZLE
		PIPE ELBOW, DOWN PIPE TEE DOWN, PIPE TEE UP, PIPE ELBOW UP
		PIPE ANCHOR, PIPE GUIDE, PIPE SLEEVE
VTR		FLEX CONNECTION, PIPE EXPANSION JOINT
IE		INVERT ELEVATION
E, R, N		EXISTING, RELOCATED AND NEW WORK, NOTE REVISION NO. 1, DEPOSITION NOTE 1, POINT OF CONNECTION
		SECTION A ON SHEET M-1 DIAGRAM ON SHEET M-1 RISER R-1 ON SHEET M-1
		FIXTURE OR EQUIPMENT TAG
		FIXTURE/EQUIPMENT TYPE FIXTURE/EQUIPMENT NUMBER

DRAWING INDEX

NUMBER	DRAWING TITLE	REVISIONS
PO2E	DRAWING INDEX, GENERAL NOTES AND LEGENDS	1. ISSUED FOR CONSTRUCTION
PO2E	SCHEDULES AND DIAGRAMS	0. ISSUED FOR REFERENCE ONLY, NOT FOR CONSTRUCTION
PIE	GRABALL SPACE FLOOR - BUILDING E - PLUMBING	
PIE	FIRST AND SECOND FLOORS - BUILDING E - PLUMBING	

GENERAL NOTES - PLUMBING

- COORDINATE THE INSTALLATION OF PLUMBING SYSTEMS WITH OTHER TRADES. OFFSET PIPING AS NECESSARY TO AVOID CONFLICTS WITH OTHER WORK AND STRUCTURAL ABOVE CEILING AND/OR BELOW FLOOR.
- VERIFY EXACT LOCATION, SIZE AND INVERT ELEVATION OF ALL EXISTING UTILITIES AT SITE PRIOR TO INSTALLATION OF ANY PIPING SYSTEMS.
- RESOLVE ALL QUESTIONS OR CONFLICTS WITH THE ENGINEER BEFORE ANY EQUIPMENT IS ORDERED, MATERIALS FABRICATED OR SYSTEMS INSTALLED.
- REFER TO THE ARCHITECTURAL DRAWINGS FOR THE EXACT LOCATION OF THE PLUMBING FIXTURES.
- SEAL ROOF PENETRATIONS WATERTIGHT WITH ROOF SYSTEM COMPATIBLE WITH ROOFING.
- ALL PIPING PENETRATIONS THROUGH FLOORS SHALL BE SEALED WATER TIGHT BY GROUTING PERMETER GAP BETWEEN PIPE AND FLOOR STRUCTURE, OR BY USING APPROVED UL SLEEVE AND SEALER SYSTEM. PENETRATIONS OF RATED WALLS SHALL USE SLEEVE WITH UL APPROVED FIRE SEALANT.
- DOMESTIC WATER PIPING LOCATED IN CEILING SPACE OF BUILDINGS SHALL BE TYPE 'L' HARD COPPER WITH WROUGHT COPPER FITTINGS. NO LEAD SOLDER OR 'PROGRESS' TO BE USED FOR FITTINGS THROUGHOUT.
- PIPING WITH IN-TUIT CONNECTING FIXTURES FROM POINT IN MECHANICAL CLOSETS INDICATED ON PLANS, SHALL BE CROSS LINKED FLEX PIPING WITH SPECIFIC MANUFACTURER'S FITTINGS.
- INSULATE ALL DOMESTIC WATER PIPING PER INSULATION SCHEDULES SHOWN IN PROJECT SPECIFICATIONS.
- WASTE AND VENT PIPING SHALL BE SCHEDULE 40 PVC DUV WITH SOLVENT CEMENTED FITTINGS. SLOPE ALL WASTE PIPING AT 1/4" PER FOOT MINIMUM UNLESS OTHERWISE NOTED. PVC PIPING SHALL NOT BE USED IN RETURN AIR FLEETS.
- MAINTAIN THE UNIFORM SLOPE SHOWN ON THE PLANS FOR THE SANITARY SEWER, STORM DRAIN AND CONDENSATE DRAIN PIPING SYSTEMS.
- SUPPORT ALL CAST IRON SOIL PIPE, PVC PIPING, COPPER PIPE AND STEEL PIPE RISERS AT EVERY STORY MINIMUM.
- ALL SANITARY VENTS SHALL BE LOCATED MINIMUM 10'-0" FROM BUILDING OUTSIDE AIR INTAKES.
- INSTALLATION SHALL CONFORM TO 2019 INTERNATIONAL PLUMBING CODE, APPLICABLE SECTIONS OF THE INTERNATIONAL BUILDING CODE AND APPLICABLE SECTIONS OF THE PUEBLO BUILDING CODE.

FIRE PROTECTION NOTES

- PROVIDE A NEW HYDRAULICALLY CALCULATED FIRE SPRINKLER SYSTEM IN ACCORDANCE WITH THE LATEST EDITIONS OF USC, UPC, AND NECA/IBS COVERAGE WILL INCLUDE LIVING SPACES, MECHANICAL SPACES AND ATTIC SPACES.
- THE CONTRACTOR SHALL BE RESPONSIBLE FOR THE DESIGN OF THE SYSTEM AND SHALL FURNISH TO THE ARCHITECT ALL DESIGN CALCULATIONS, SHOP DRAWINGS OF THE SYSTEM, AND CATALOG DATA OF ALL EQUIPMENT AS PART OF REQUIRED SUBMITTAL DATA IN SPECIFICATIONS. REFER TO SHEETS PS AND FA.
- SHOP DRAWINGS SHALL INDICATE THE LOCATION OF ALL SPRINKLER HEAD AND PIPING COORDINATED WITH THE LOCATION OF ALL STRUCTURAL MEMBERS, HVAC EQUIPMENT, LIGHT FIXTURES, CEILING DIFFUSERS, REGISTERS AND PIPING.
- THE LAYOUT, SUPERVISION AND INSTALLATION OF FIRE PROTECTION SYSTEMS IS A TRADE IN ITSELF AND SHALL BE PERFORMED ONLY BY FULLY SKILLED, EXPERIENCED AND RESPONSIBLE PARTIES. THE PROSPECTIVE FIRE PROTECTION CONTRACTOR MAY BE REQUIRED TO SHOW TO THE SATISFACTION OF THE ARCHITECT, SUCH SKILL, EXPERIENCE, AND RESPONSIBILITY.
- PERFORM WORK IN STRICT COMPLIANCE WITH THESE SPECIFICATIONS AND DRAWINGS. THE REQUIREMENTS OF THE STATE CERTIFIED SUPPRESSION INSPECTOR AND ALL APPLICABLE CODES, ORDINANCES, STANDARDS, AND STATUTES IN EFFECT AT THE BUILDING SITE.
- ADHERE TO THE MOST RECENT EDITION OF THE FOLLOWING PUBLICATIONS, TOGETHER WITH THE LATEST REVISIONS, SUPPLEMENTS, AND AMENDMENTS:
 - INTERNATIONAL FIRE PROTECTION ASSOCIATION (NFPA) STANDARD 13.
 - UNDERWRITERS LABORATORIES, INC. (UL) FIRE PROTECTION EQUIPMENT LIST.
 - CITY OF PUEBLO FIRE AUTHORITY.
- OBTAIN AND PAY FOR ALL NECESSARY PERMITS PRIOR TO STARTING WORK. OBTAIN CERTIFICATES, APPROVALS, AND/OR ACCEPTANCES OF ALL INTERESTED PARTIES AND AUTHORITIES HAVING JURISDICTION.
- PIPING TO BE IRON, STEEL OR CPVC IN WEIGHTS AND GAUGES APPROVED BY NFPA 13 FOR USE IN FIRE PROTECTION SYSTEMS. FITTINGS SHALL BE APPROVED FOR USE WITH THE INSTALLED SPRINKLER PIPING, WITH A MINIMUM WORKING PRESSURE OF 175 PSI.
- NOTIFY OWNER, ARCHITECT AND ALL AUTHORITIES HAVING JURISDICTION NOT LESS THAN SEVENTY-TWO (72) HOURS PRIOR TO FINAL TESTING. DO NOT PERMIT INTERIOR PIPING TO BE CONCEALED IN ANY WAY UNTIL ALL HYDROSTATIC AND OTHER TESTS AND INSPECTIONS HAVE BEEN SATISFACTORILY COMPLETED. ALL CONCEALED PIPING SHALL BE INSTALLED WITH ACCESS PANELS. ALL CONCEALED PIPING SHALL BE INSTALLED WITH ACCESS PANELS. NECESSARY PERSONNEL, CORRECT ALL DEFECTS, DEFICIENCIES, REPAIR ALL LEAKS AND RE-TEST AS REQUIRED.

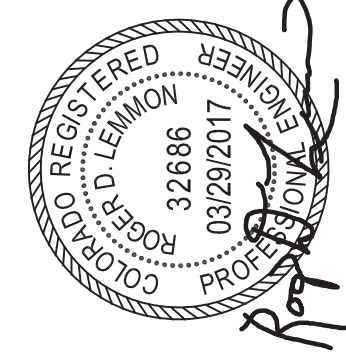


HOUSING AUTHORITY OF PUEBLO
 308 West Florence Street, Suite 200
 Pueblo, Colorado 81002
 (719) 545-4300
 (719) 545-4303
 (719) 545-4304

MB Architects, Inc.
 1000 North Tejon Street, Suite 100
 Pueblo, Colorado 81002
 (719) 545-4300
 (719) 545-4303
 (719) 545-4304

UPLANDS TOWNHOMES
 DEVELOPED BY THE HOUSING AUTHORITY OF PUEBLO
 PROJECT No. UPL-T-24-04
 ACERO AVE. and SFRAGUE AVE., PUEBLO, COLORADO 81004

DATE	02/25/2021
DRAWN	
CAD	
PROJECT	UPLANDS TOWNHOMES
NO. OF SHEETS	102
NO. OF SHEETS USED	102



SHEET
 PO:IE

WORK NOTES (THIS SHEET ONLY)

1. SANITARY: REFER TO CRAWL SPACE PLUMBING SHEETS FOR VENT FOR ACTUAL BUILDING DIRECTION OF FLOW.
2. WASHER STAND PIPE. SEE RISER B.
3. WASTE FROM BATHROOM/WASHER ABOVE.
4. VENT UP FROM BELOW.
5. SINK VENT TO OFFSET UNDER WINDOW.
6. VENT UP.
7. CUMULATIVE SUPPLIES. ROUTE IN COPPER, THEN TRANSITION TO PEX IN CEILING AND TO FIXTURES. PROVIDE WITH EASY ACCESS ISOLATION VALVES.
8. 1/2" CU/HD UP TO WASHER BOX.
9. 1/2" CU UP TO WATER CLOSET.
10. 1/2" CU/HD UP TO TUB/SHOWER AND LAV.
11. 1/2" CU/HD DOWN INTERIOR WALL TO SUPPLY KITCHEN SINK.
12. 1/2" CU/HD DOWN W/ART SIDE OF INSULATION TO SUPPLY KITCHEN SINK.
13. 1/2" CU/HD UP TO TUB/SHOWER.
14. 2" WASTE DOWN.
15. 4" WASTE DOWN.
16. 2" WASTE FROM LAV ABOVE.
17. 1/2" CU/HD UP TO LAV ABOVE.
18. ROUTE 1/2" WASHER DRAIN PEX LINE THROUGH JOISTS DOWN WALLS AND DARK LIGHT NEAR GRADE.
19. ROUTE PIPING IN CRAWL SPACE.
20. COORDINATE LOCATION OF WATER HEATER WITH ASSOCIATED FAN COIL UNIT AND DUCTWORK. SEE HVAC PIPING DIAGRAM ON SHEET P02E.
21. WATER HEATER VENT TO BE PIPED VERTICALLY THROUGH 2ND FLOOR TO ROOF AND TERMINATED PER MANUFACTURER'S REQUIREMENTS. REFER TO VENTING DIAGRAM ON SHEET P02E.
22. WATER HEATER TO VENT TO BE PIPED VERTICALLY THROUGH 2ND FLOOR TO ROOF AND TERMINATED PER MANUFACTURER'S REQUIREMENTS. REFER TO VENTING DIAGRAMS ON SHEET P02E.



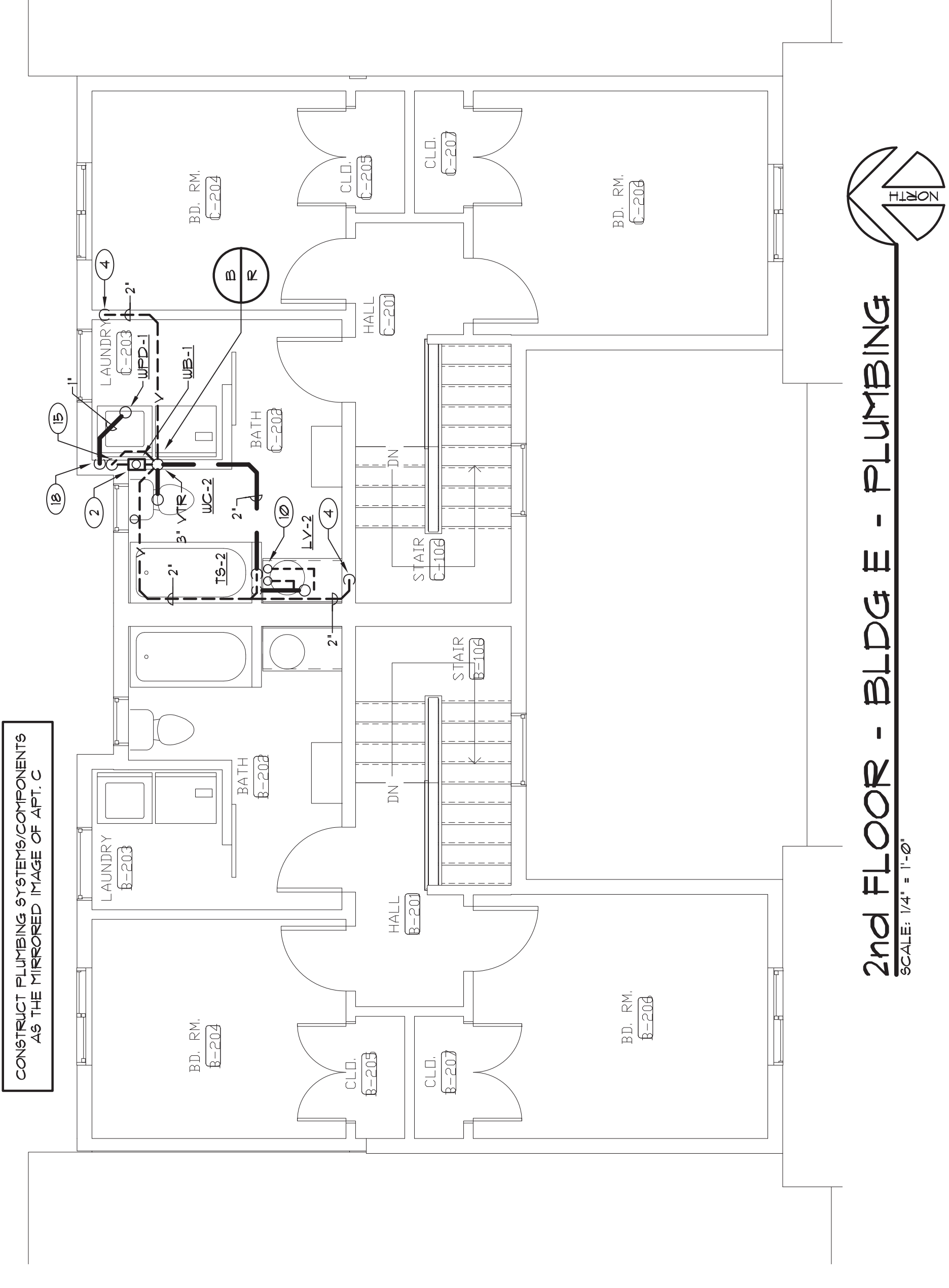
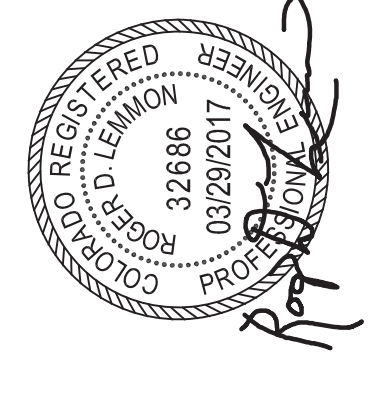
HOUSING AUTHORITY OF PUEBLO
 Registered Professional Engineer
 300 West Platte Street, Suite 200
 Pueblo, Colorado 81007
 (719) 245-4300
 (719) 245-4141

AB Associates, Inc.
 Registered Professional Engineer
 300 West Platte Street, Suite 200
 Pueblo, Colorado 81007
 (719) 245-4300
 (719) 245-4141

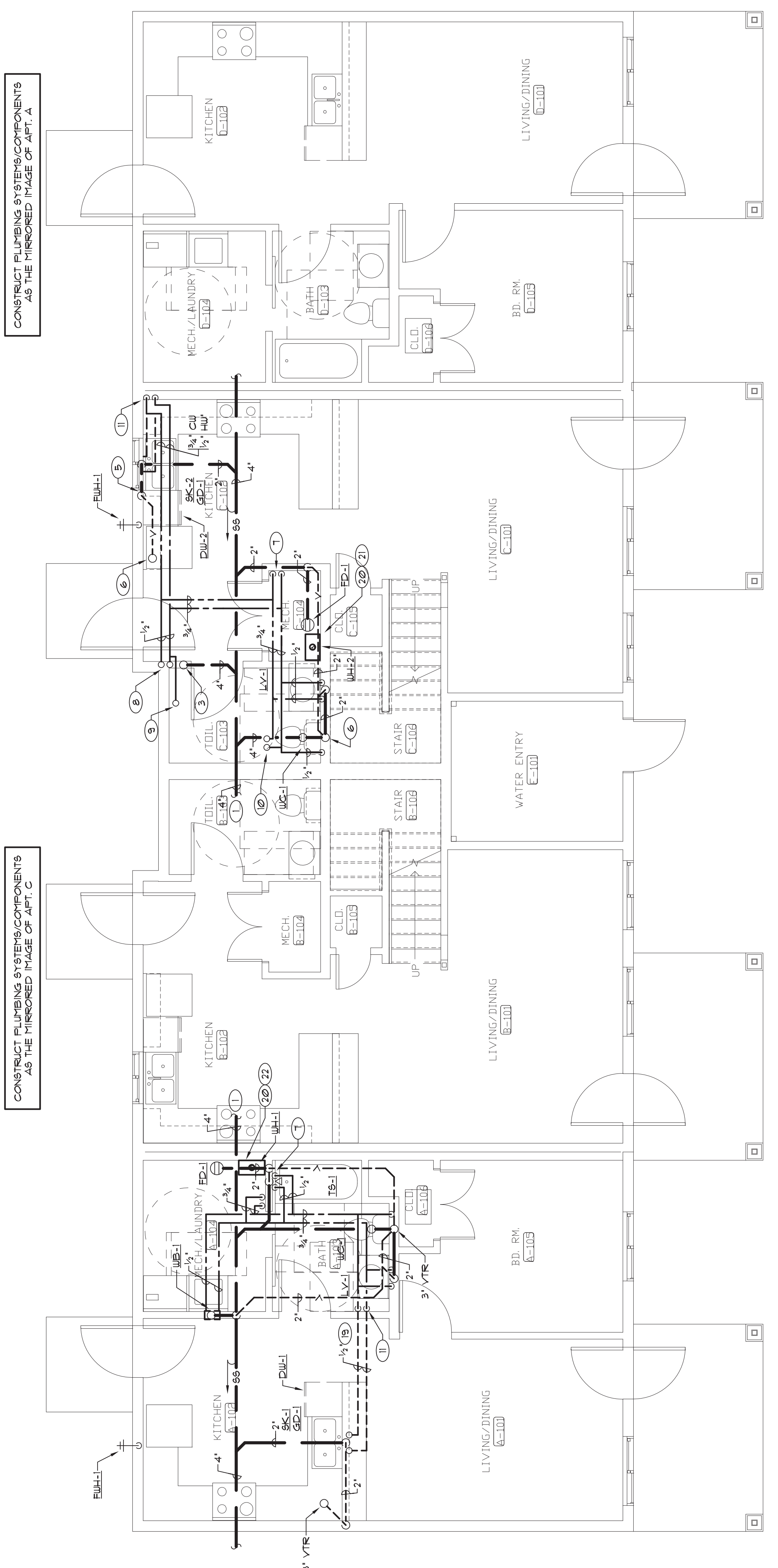
UPLANDS TOWNHOMES
 DEVELOPED BY THE HOUSING AUTHORITY OF PUEBLO
 PROJECT No. I.F.B. T-524-RAD
 ACERO AVE. and SPRAGUE AVE., PUEBLO, COLORADO 81004

DATE	02/23/2011
DRAWN	
CAD	
PROJECT	UPLANDS TOWNHOMES
REVISIONS:	

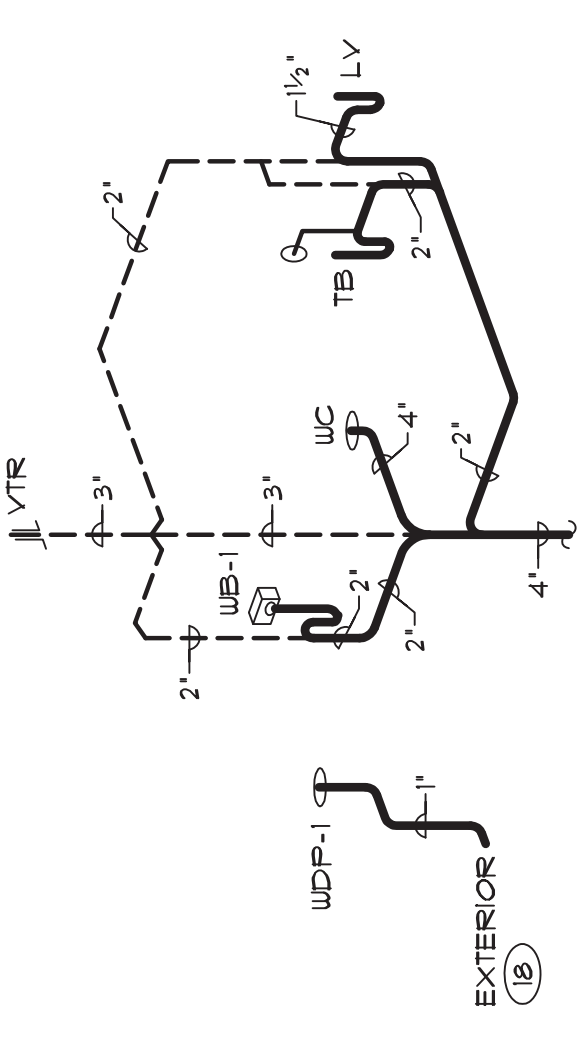
SHEET
P1.2E



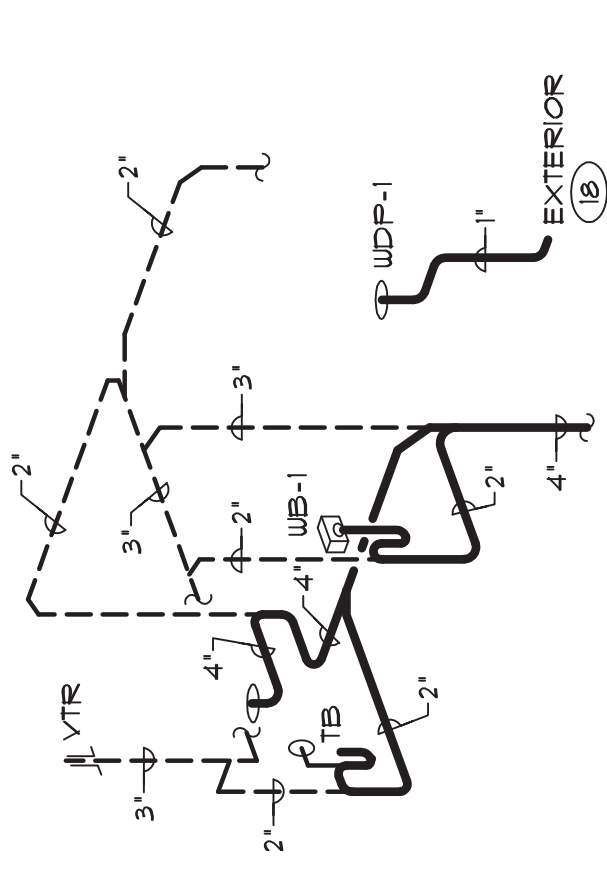
CONSTRUCT PLUMBING SYSTEMS/COMPONENTS AS THE MIRROR IMAGE OF APT. C



CONSTRUCT PLUMBING SYSTEMS/COMPONENTS AS THE MIRROR IMAGE OF APT. C



CONSTRUCT PLUMBING SYSTEMS/COMPONENTS AS THE MIRROR IMAGE OF APT. A



CONSTRUCT PLUMBING SYSTEMS/COMPONENTS AS THE MIRROR IMAGE OF APT. A

