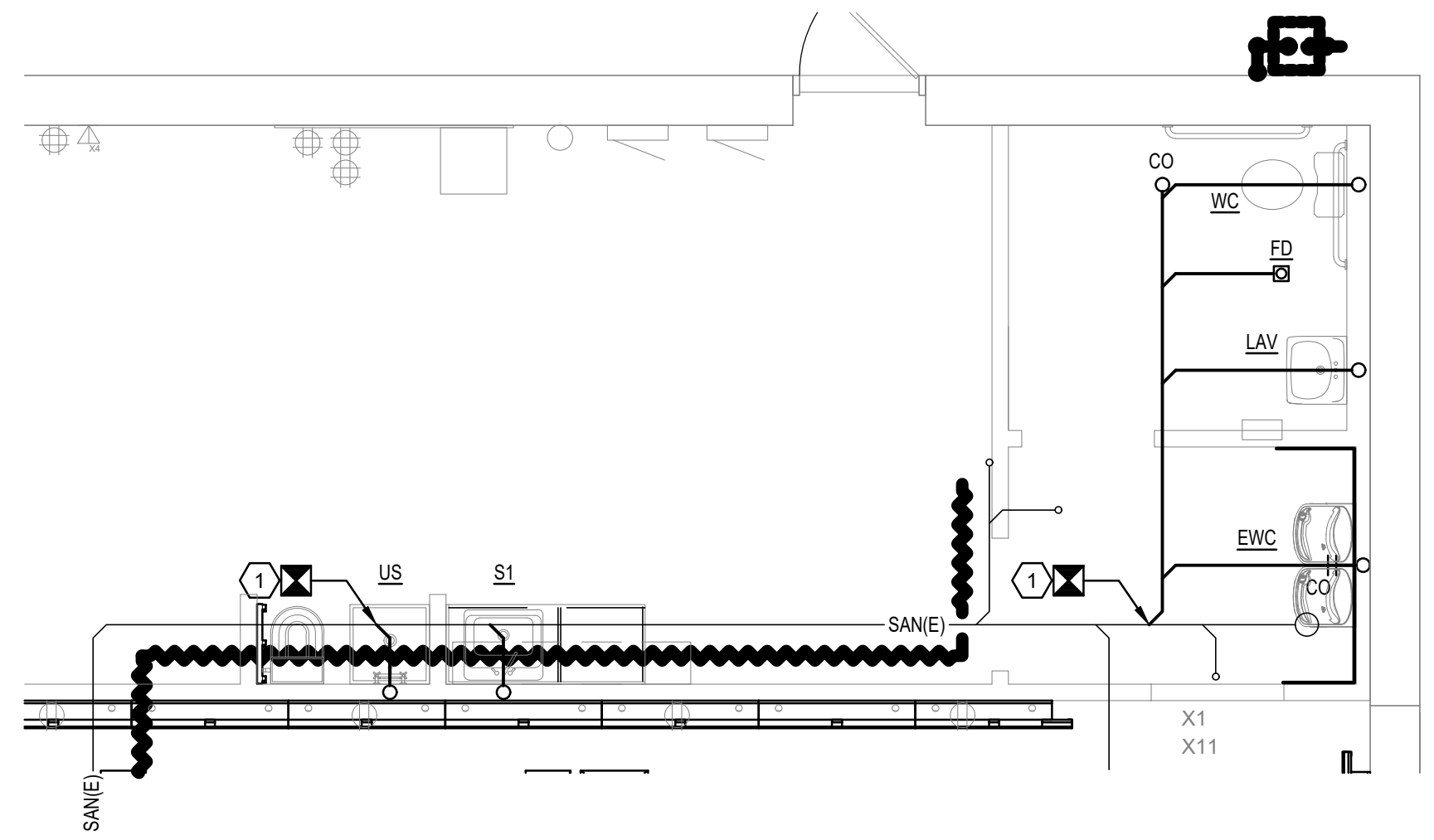
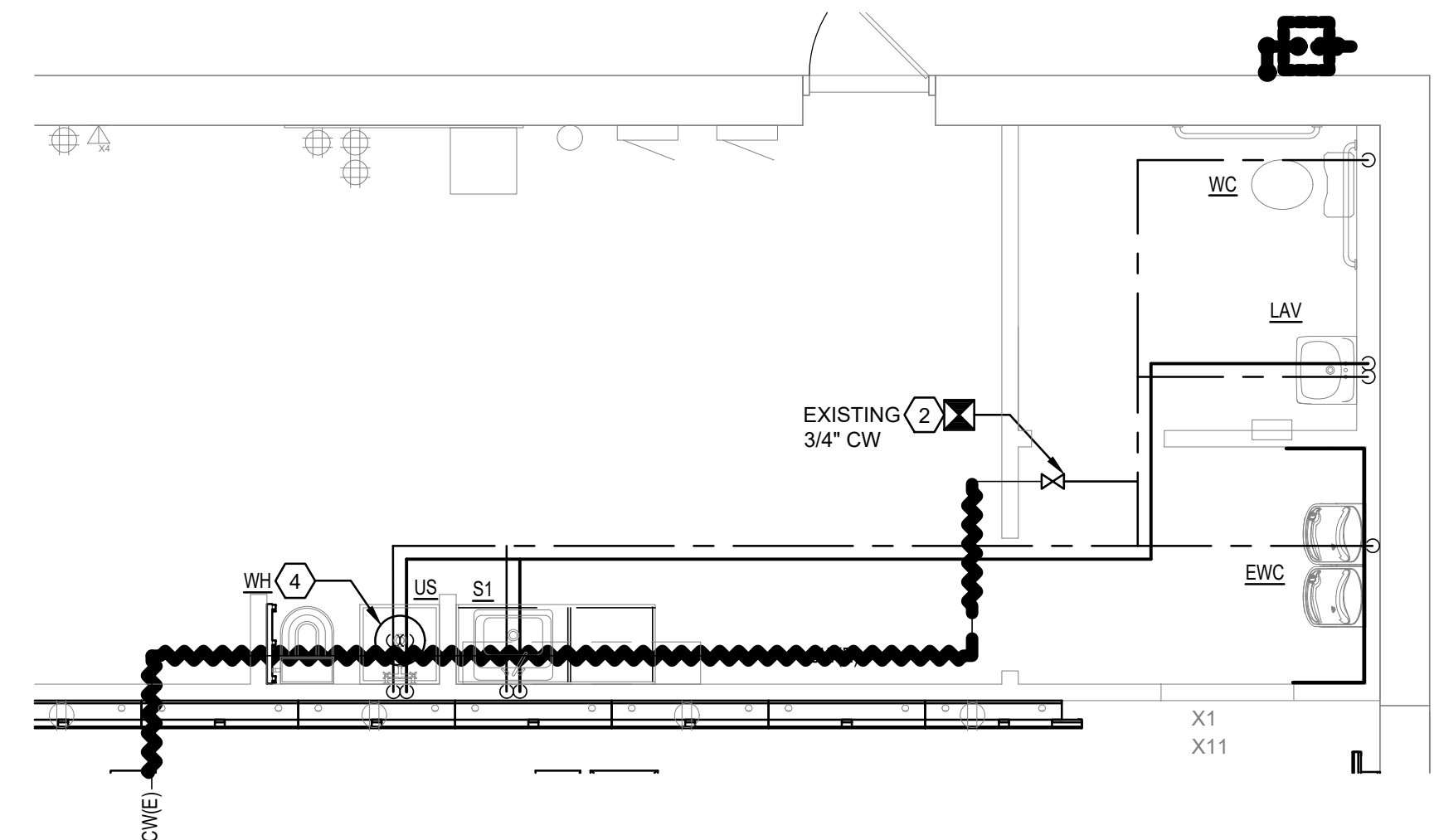


DRAINAGE FIXTURE UNITS			
TAG	QUANTITY	UNITS PER FIXT	TOTAL DRAINAGE FU'S
WC	1	4	4
LAV	1	1	1
FD	1	2	2
S1	1	2	2
US	1	2	2
EWC	1	.5	.5
TOTALS			11.5



B1 PLUMBING SANITARY FLOOR PLAN
NTS

SUPPLY FIXTURE UNITS			
TAG	QUANTITY	COLD FU'S	HOT FU'S
WC	1	3	-
LAV	1	1	1
S1	1	1.25	1.25
US	1	1	1
EWC	1	.5	-
TOTALS		6.75	3.25



B2 PLUMBING DOMESTIC WATER FLOOR PLAN
NTS

SHEET NOTES	
#	NOTES
1	PROVIDE SANITARY PIPING TO NEW PLUMBING FIXTURES AS SHOWN. CONNECT NEW PIPING TO EXISTING 4" SANITARY LINE THAT SERVED THE PREVIOUS RESTROOM. FIELD VERIFY CONNECTION LOCATION, INVERT, AND DIRECTION OF FLOW PRIOR TO BID.
2	PROVIDE NEW DOMESTIC WATER DISTRIBUTION PIPING AS SHOWN. CONNECT TO EXISTING 3/4" VALVED STUB-IN SERVING TENANT SPACE. FIELD VERIFY LOCATION PRIOR TO BID. COORDINATE ALL METER & BACKFLOW REQUIREMENTS WITH LANDLORD REPRESENTATIVE & UTILITY CO. VERIFY METER LOCATION IN FIELD.
3	PROVIDE NEW VENT PIPING AS SHOWN. CONNECT TO EXISTING VENT PIPING SYSTEM SERVING THE TENANT SPACE. FIELD VERIFY CONNECTION LOCATION PRIOR TO BID. IF NO VENT PIPING SYSTEM IS PRESENT PROVIDE NEW 3" VENT THRU ROOF. LOCATE VENT A MINIMUM OF 10'-0" FROM ALL OUTSIDE AIR INTAKES. SEE DETAIL.
4	PROVIDE NEW SHELF MOUNTED ELECTRIC WATER HEATER. PIPE PRESSURE RELIEF VALVE TO MOP SINK. SEE DETAIL, SHEET P501.
5	PROVIDE NEW AUTOMATIC TRAP PRIMER FOR RESTROOM FLOOR DRAINS. TRAP PRIMER MUST BE CAPABLE OF SERVING (2) FLOOR DRAINS.

PLUMBING FIXTURE DATA	
S1	SINK - "ELKAY" GEGR25213, SELF RIMMING, 20 GA 304 SS, 25"x21 1/4, 5 3/8 DEEP, 3 HOLES, 4" O.C. PROVIDE WITH PEERLESS MODEL P299568LF FAUCET (1.8 GPM). PROVIDE "POWERS" E480 THERMOSTATIC MIXING VALVE (ASSE 1070, CSA B125.3 CERTIFIED), SET MAX. TEMP. TO 100° F.
WC	WATER CLOSET - "AMERICAN STANDARD" 2467.100 CADET FLOW WISE ELONGATED PRESSURE ASSISTED, 1.1 GPF, ADA COMPLIANT, FLOOR MOUNTED, (BOBWL #3481.001, TANK #2462.100, SEAT: PROVIDE ELONGATED OPEN FRONT) COORDINATE HANDLE SIDE REQUIRED BEFORE ORDERING W.C.
LAV	LAVATORY - "AMERICAN STANDARD" LUCERNE, ADA COMPLIANT, WALL MOUNTED. PROVIDE WITH "AMERICAN STANDARD" RELIANT LAVATORY FAUCET (0.5 GPM), OFFSET TRAP WITH INSULATED "TRAP WRAP" PROTECTIVE KIT 500R BY BROCAR. PROVIDE "POWERS" E480 THERMOSTATIC MIXING VALVE (ASSE 1070, CSA B125.3 CERTIFIED), SET MAX. TEMP. TO 100° F.
FD	FLOOR DRAIN - "ZURN" MODEL #FD-2212-P, CAST IRON, POLISHED BRONZE. INSTALL FLUSH WITH FLOOR. PROVIDE "PRECISION PLUMBING PRODUCTS" #P2-500 AUTOMATIC TRAP PRIMER WITH ANTI SIPHON PORTS, SERVES 2 FLOOR DRAINS EA., 1/2" CONNECTION.
WH	ELECTRIC WATER HEATER - A.O. SMITH "PROMAX" MODEL #EJSC-10, 10 GALLON, 120V/1Ø, 1650W ELEMENT, 18" TALL, 16" DIA., 3/4" INLET/OUTLET, 45 LBS.
US	UTILITY SINK - FLORESTONE #SC UTILITY WITH "CHICAGO FAUCET" #911-IS369CP LEVER HANDLES. RCF FAUCET WITH 892-GABCP ELEVATED VACUUM BREAKER.
EWC	ELECTRIC WATER COOLER - ELKAY MODEL EZSTL8C, BARRIER FREE, 8 GALLONS PER HOUR, 1/4 H.P., 115/1/60, 4.6 FLA.

Firm's License #

State License #

#	DESCRIPTION	DATE
1	BUILDING DEPARTMENT	7/26/17

US HWY 50 & CLUB MANOR DR
908 W US HWY 50
PUEBLO, CO 81008
PLUMBING FLOOR PLAN

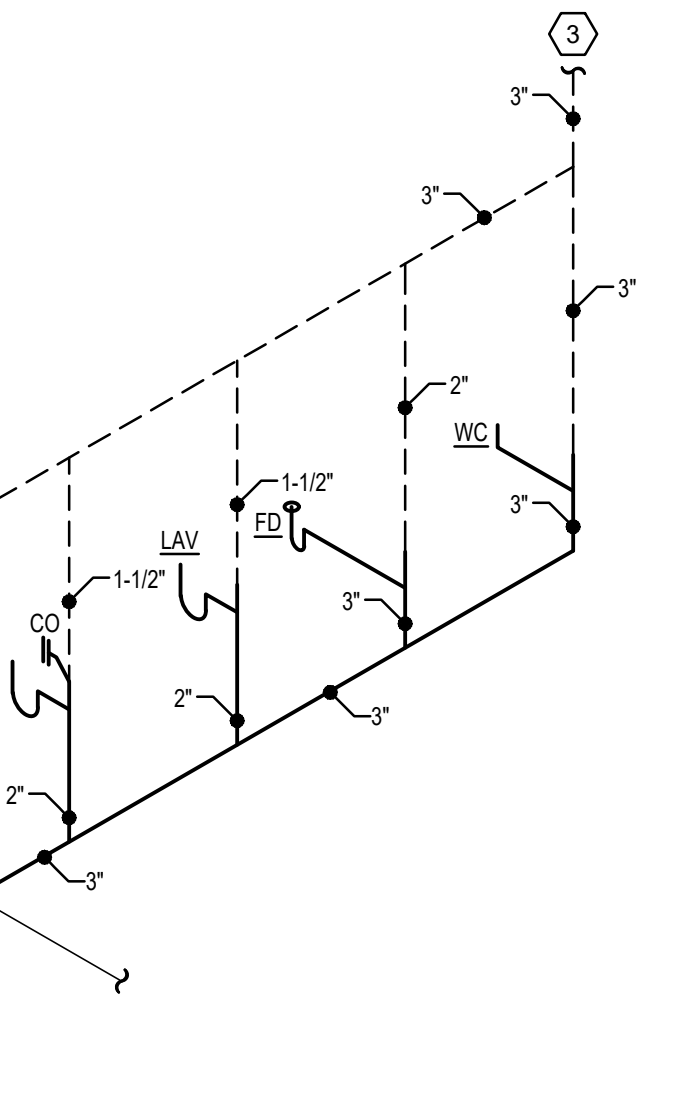
MDC
CORPORATE - RELO
686
DESIGN DEVELOPMENT

DATE: 12/21/2017
SCALE: 1/4"=1'-0"
DRAWN BY: XXX
PROJECT No.: TMO384
SHEET:

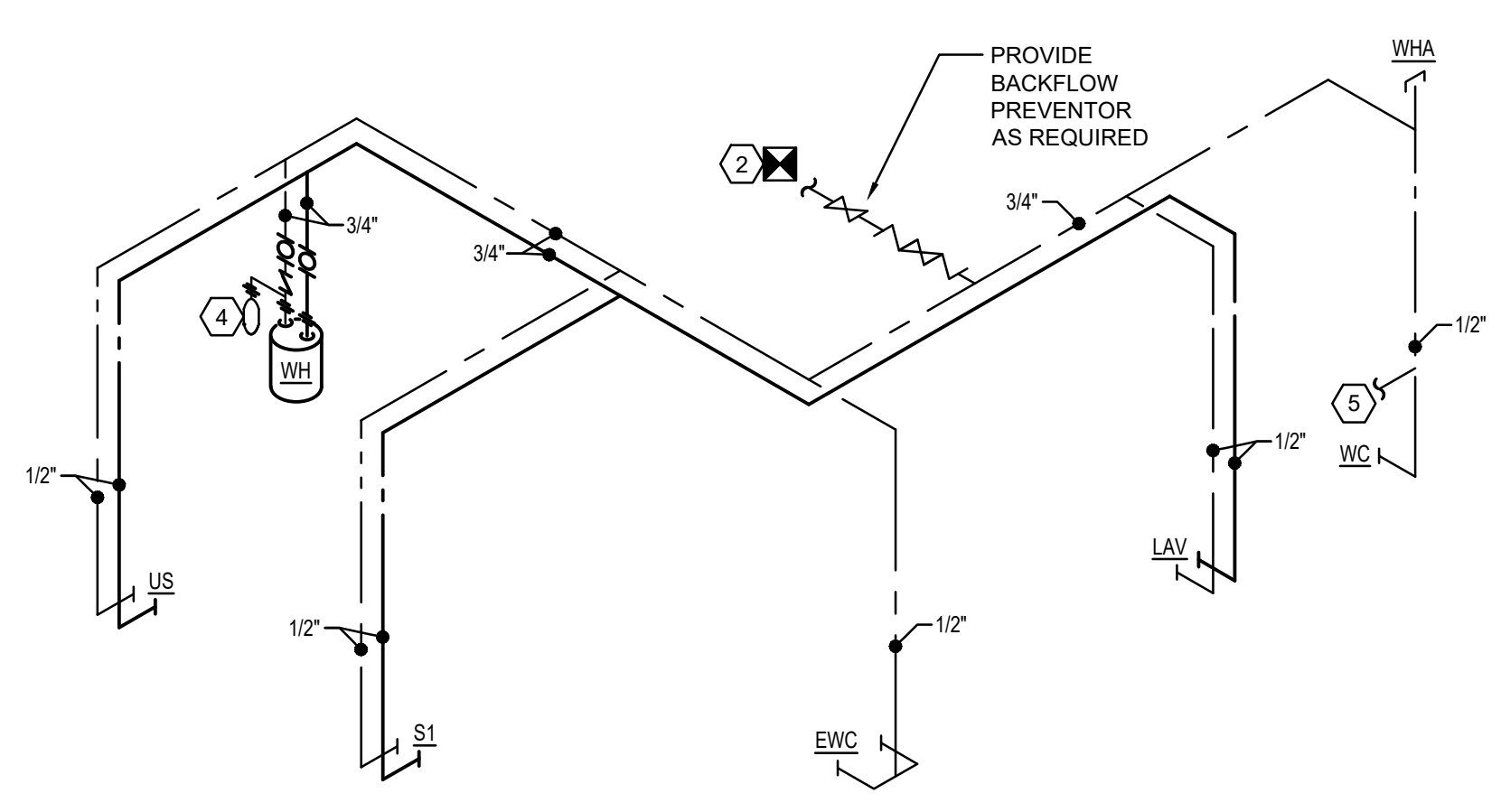
P101

PIPING MATERIALS	
SANITARY (BELOW GRADE) - PVC SCHEDULE 40 OR SERVICE WEIGHT CAST IRON. JOINING - SOLVENT WELDED ASTM D2564	
WATER PIPING (ABOVE GRADE) - ASTM B88, TYPE L HARD DRAWN COPPER. JOINING - ANSII/ASTM B32, "LEAD-FREE" SOLDER INSULATION - 3/4" OR LESS, 1/2" THICK FIBERGLASS, 1" OR MORE, 1" FIBERGLASS	
CONDENSATE PIPING (WHERE REQUIRED) - ASTM B306, COPPER. JOINING - SOLDER GRADE 50B INSULATION -1/2" THICK ARMAFLEX THREADED ON PIPE	

GENERAL NOTES	
A.	CONTRACTOR SHALL VISIT THE SITE PRIOR TO BID AND VERIFY ALL WORKING CONDITIONS, CLEARANCES, AND REQUIREMENTS FOR PROVIDING A COMPLETE AND FUNCTIONAL SYSTEM. NO CHANGES IN THE CONTRACT OR CONTRACT SUM WILL BE MADE DUE TO THE FAILURE TO THOROUGHLY EXAMINE THE SITE AND CONDITIONS.
B.	CONTRACTOR SHALL BE RESPONSIBLE FOR ALL SAWCUTTING REQUIRED FOR THIS JOB. COORDINATE BACKFILLING AND CONCRETE PATCHING RESPONSIBILITIES WITH THE GENERAL CONTRACTOR.
WHEN REQUIRED, IT IS THE OWNER'S RESPONSIBILITY TO CONTRACT WITH A COMMISSIONING AUTHORITY TO COMPLY WITH LOCAL CODES.	



A1 WASTE & VENT ISOMETRIC
NTS



A2 WATER RISER DIAGRAM
NTS