

Firm's License #

State License #

DESCRIPTION	DATE
1 BUILDING DEPARTMENT	7/26/17

US HWY 50 & CLUB MANOR DR  
908 W US HWY 50  
PUEBLO, CO 81008

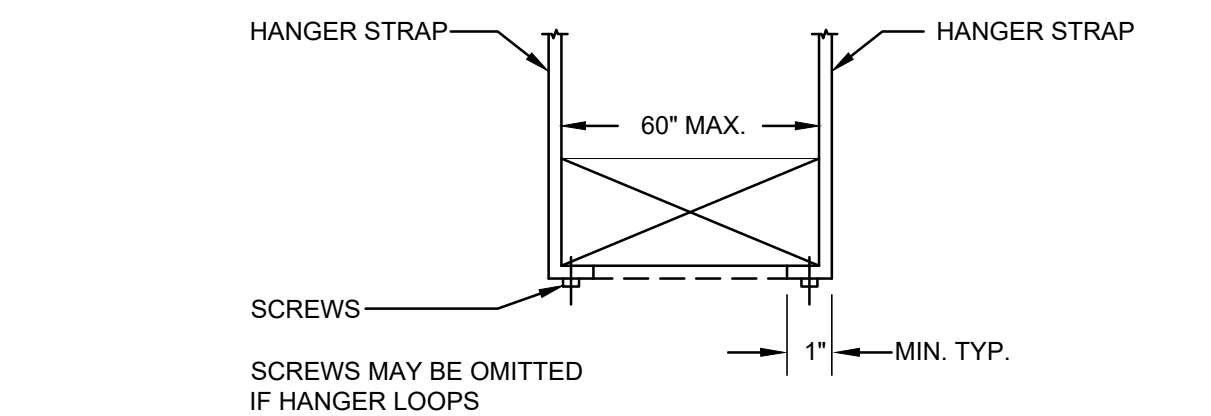
MECHANICAL DETAILS

MDC  
CORPORATE - RELO  
**686**

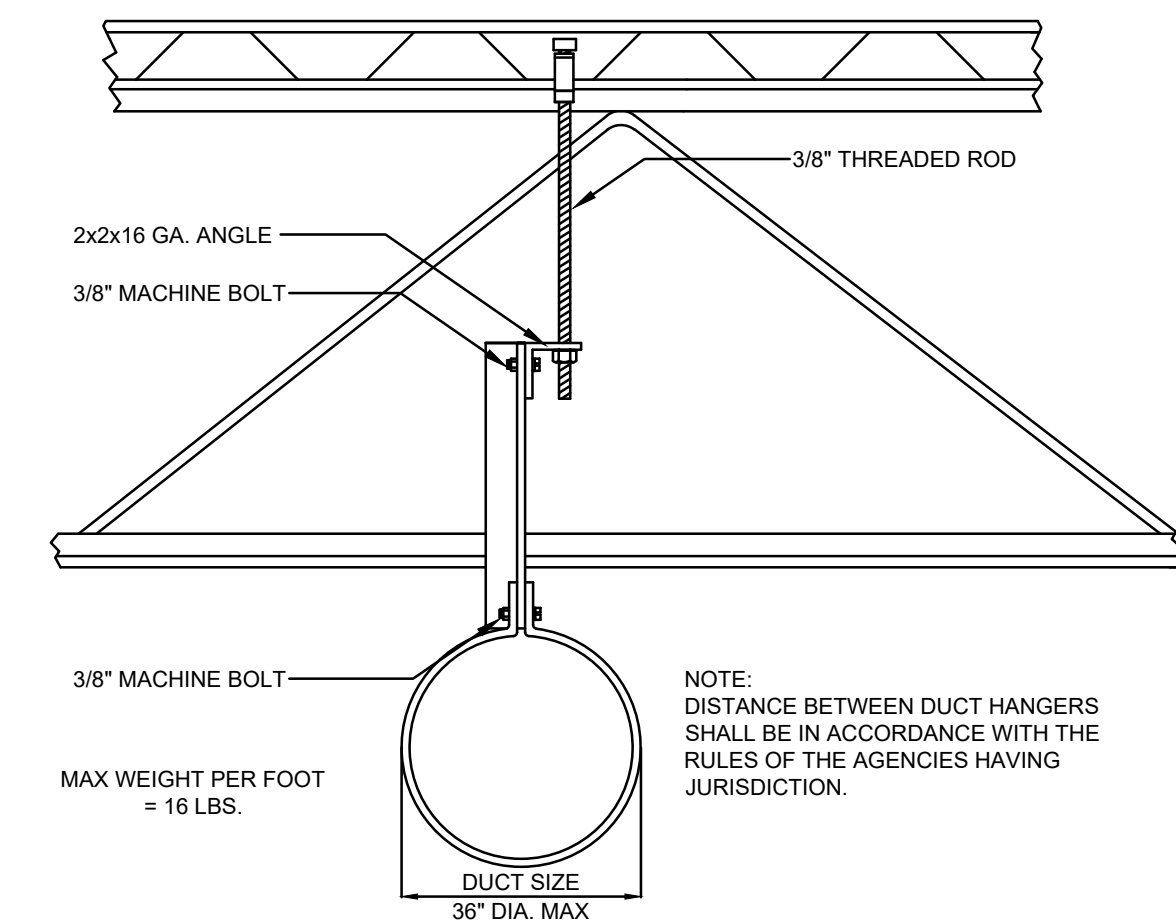
DESIGN DEVELOPMENT

DATE: 12/21/2017  
SCALE: NO SCALE  
DRAWN BY: XXX  
PROJECT No.: TMO364  
SHEET:

M501



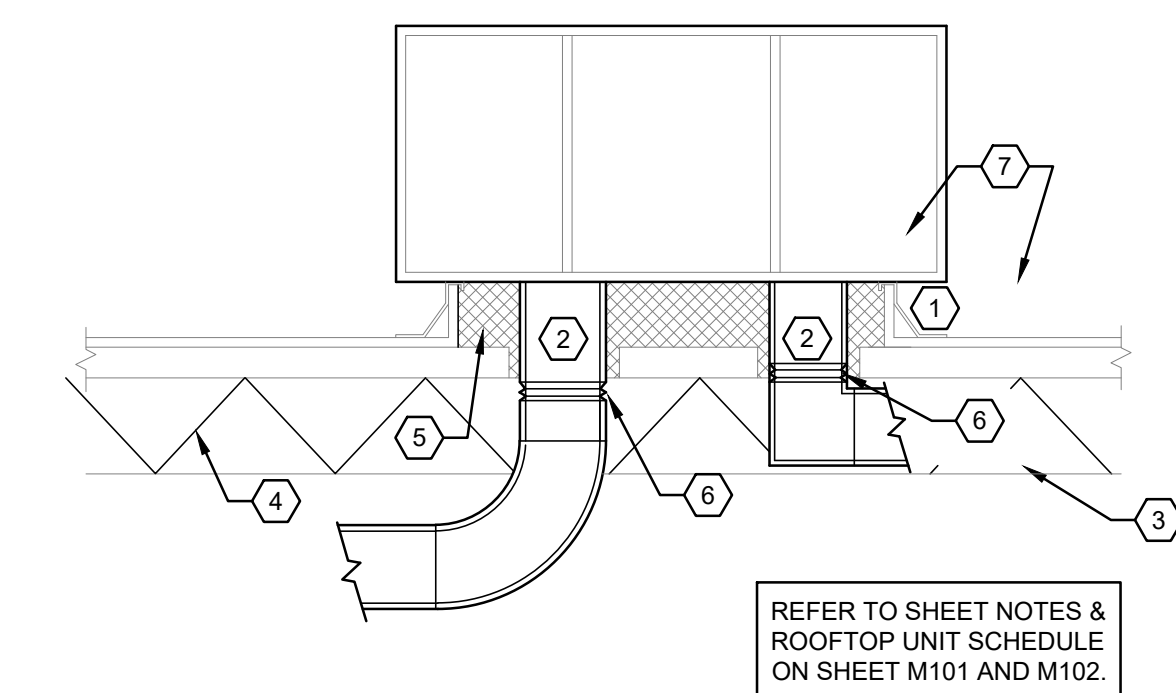
**C3** DUCT HANGING  
NTS



ROUND DUCTS LONGITUDINAL SEAM

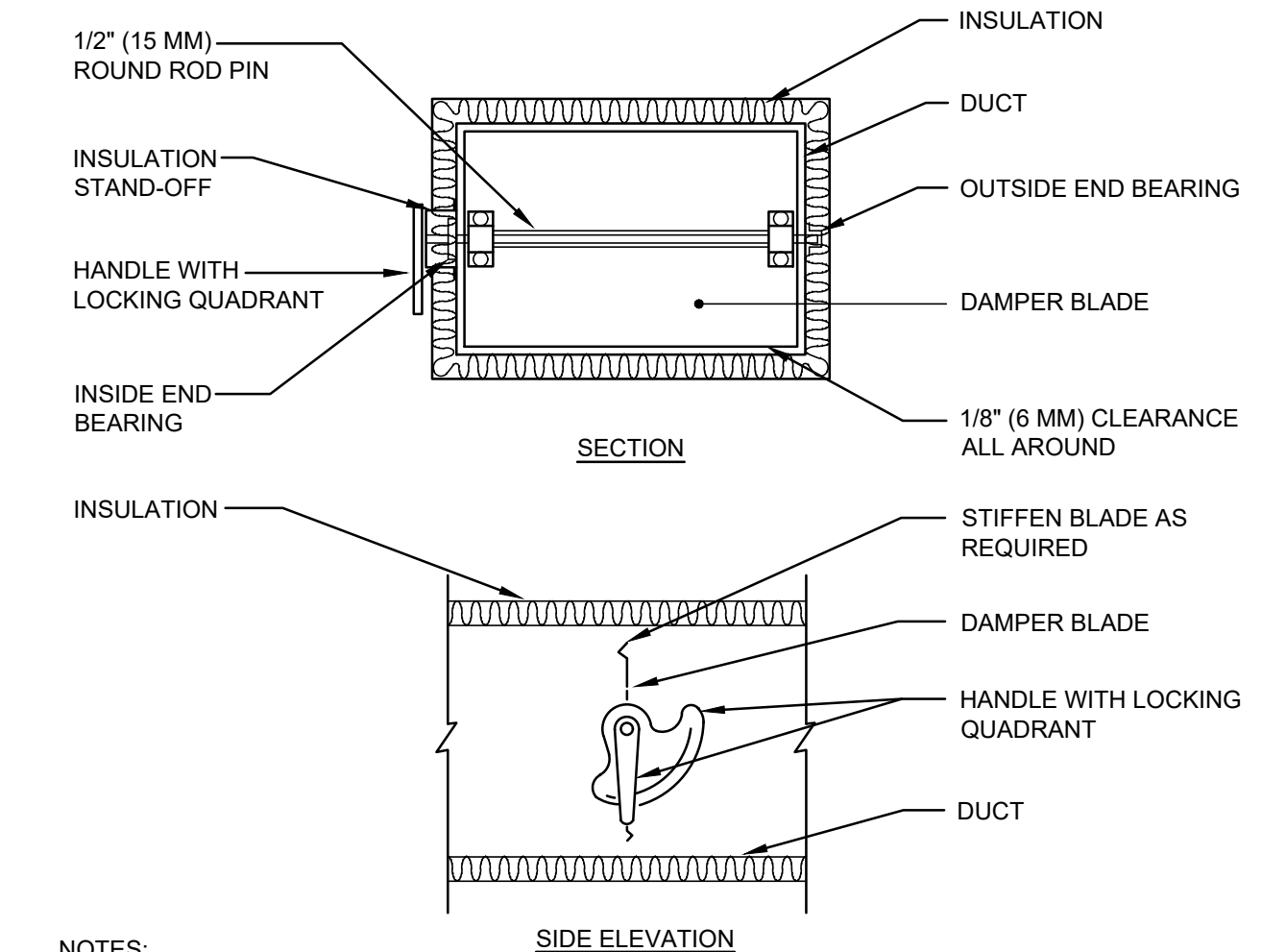
DIAMETER INCHES	SPIRAL SEAM DUCT STEEL MIN. GALV. SHT. GAUGE	DUCT STEEL MIN. GALV. SHT. GAUGE	FITTINGS STEEL MIN. GALV. SHT. GAUGE
THROUGH 12	26 (0.022 IN.)	26 (0.022 IN.)	26 (0.022 IN.)
13 THROUGH 18	26 (0.022 IN.)	24 (0.028 IN.)	24 (0.028 IN.)
19 THROUGH 28	26 (0.022 IN.)	24 (0.028 IN.)	24 (0.028 IN.)
29 THROUGH 36	24 (0.028 IN.)	22 (0.034 IN.)	22 (0.034 IN.)
37 THROUGH 52	22 (0.034 IN.)	18 (0.052 IN.)	18 (0.052 IN.)

**B3** ROUND DUCT HANGING DETAIL  
NTS



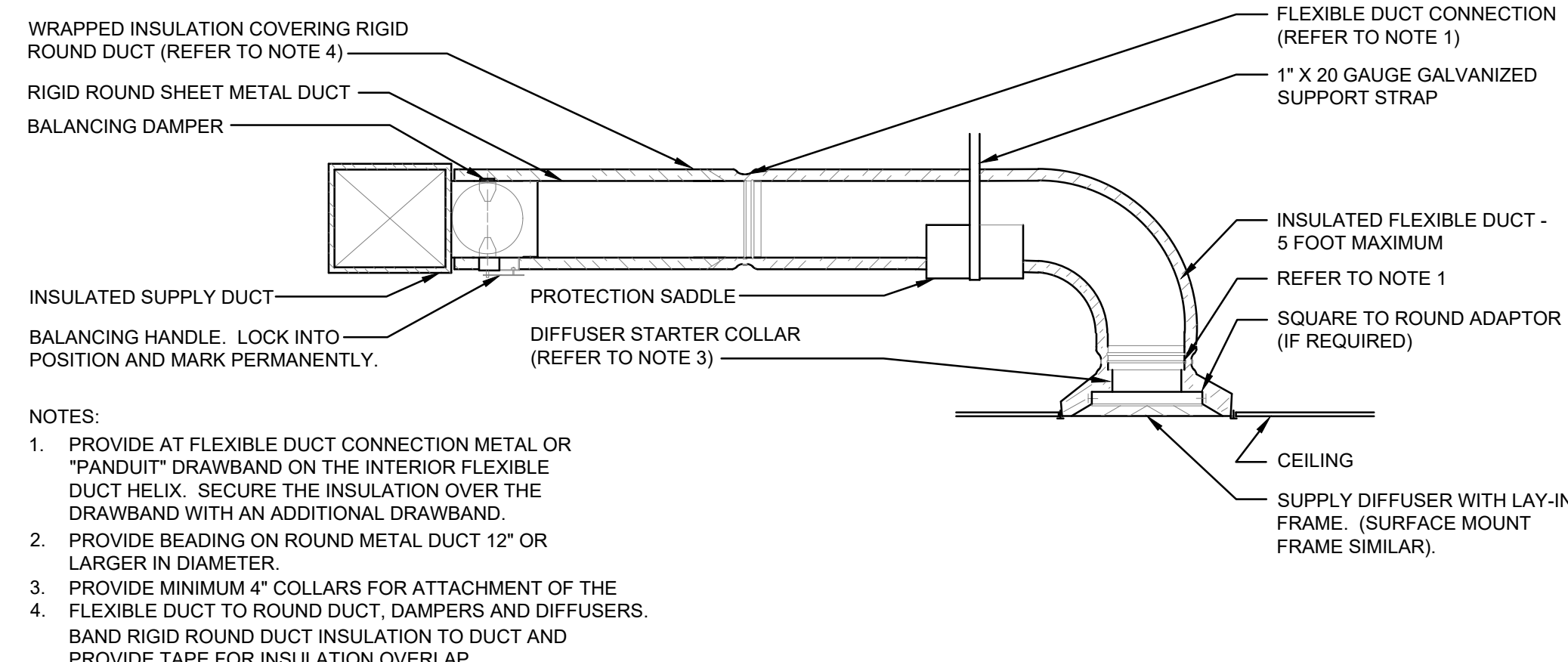
- NOTES:
1. SET ROOF CURB ON STRUCTURAL STEEL - SHIM DEAD LEVEL. SECURE ROOF CURB TO METAL DECK AND A/C UNIT TO ROOF CURB. T.G.C. SHALL COORDINATE STRUCTURAL CONNECTION OF UNIT WITH MANUFACTURER. PROVIDE RFI PRIOR TO INSTALLATION AS REQUIRED FOR ANY STRUCTURAL TIE DOWN DETAILS REQUIRED BY JHA.
  2. TRANSITION TO CONNECTION SIZES IN DUCT RISE, REFER TO PLANS FOR SIZES.
  3. 1" ACOUSTIC LINED IN SUPPLY AND RETURN DUCTS FROM FAN DISCHARGE TO POINT INDICATED ON MECHANICAL DRAWINGS (10'-0" MIN.). DUCT SIZES INDICATED ON PLAN ARE EXTERIOR AND INCLUDE LINING. PAINT DUCTWORK TO MATCH CEILING. REFER TO ARCHITECTURAL DRAWINGS FOR COLOR SCHEME.
  4. REFER TO STRUCTURAL DRAWINGS FOR JOIST LOCATIONS, SIZES, AND DIRECTION.
  5. INSULATED ROOF CURB.
  6. FLEXIBLE CONNECTION - TYPICAL.
  7. COPPER CONDENSATE DRAIN WITH CLEANOUT AND 4" DEEP SEAL TRAP. DISCHARGE TO SPLASH PAD ON ROOF WHERE PERMITTED, OR THRU CURB AND DOWN TO LAVATORY P-TRAP OR MOP SINK.
  8. 2-POSITION (OPEN/CLOSED) OPPOSED BLADE BACKDRAFT DAMPER. DAMPER TO OPEN WHEN UNIT IS RUNNING AND CLOSE WHEN UNIT SHUTS OFF. ACUATOR SHALL FAIL CLOSED.

**B4** RTU DETAIL  
NTS



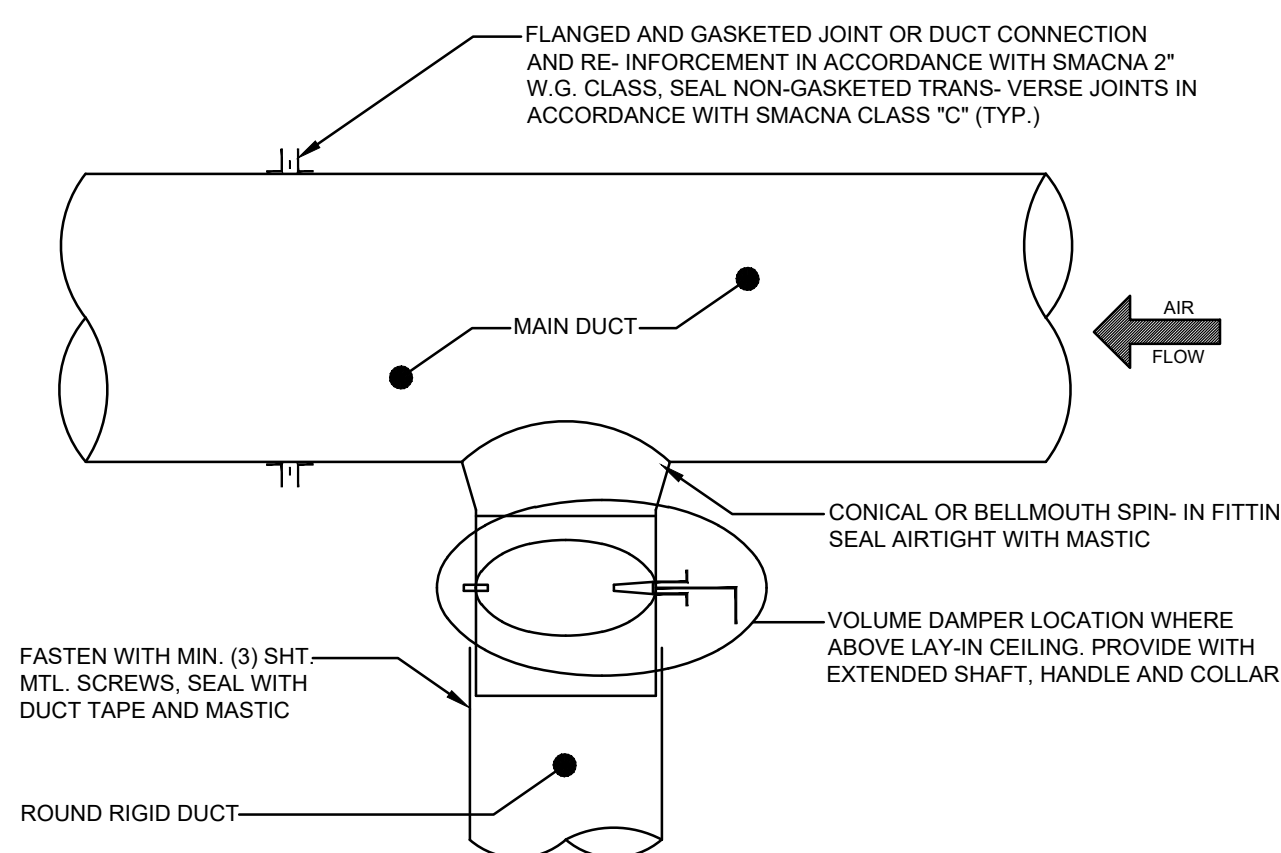
- NOTES:
1. DETAIL SHOWS SINGLE BLADE DAMPER. DAMPER INSTALLATION SHALL BE SIMILAR FOR MULTI-BLADE DAMPERS & ROUND DAMPERS.

**B1** MANUAL DAMPER DETAIL  
NTS

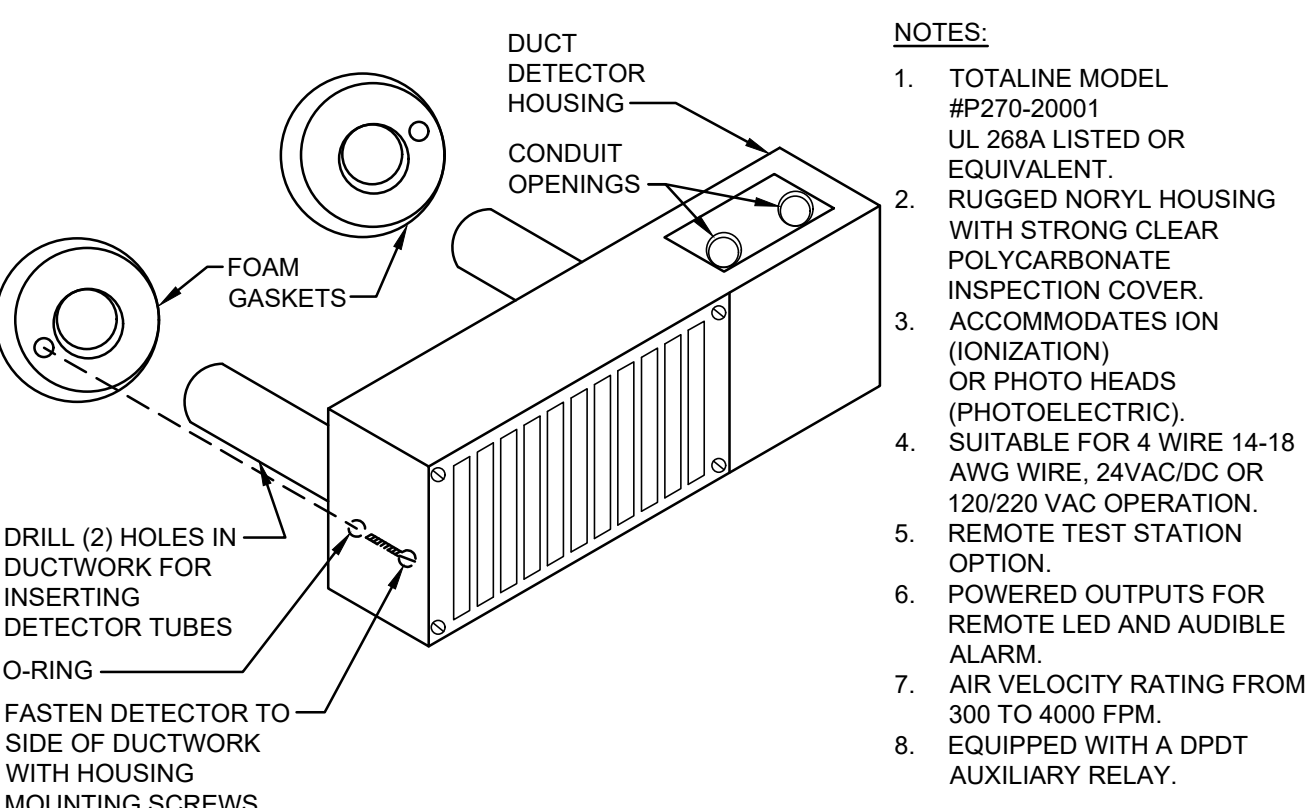


- NOTES:
1. PROVIDE AT FLEXIBLE DUCT CONNECTION METAL OR "PANDUIT" DRAWBAND ON THE INTERIOR FLEXIBLE DUCT HELIX. SECURE THE INSULATION OVER THE DRAWBAND WITH AN ADDITIONAL DRAWBAND.
  2. PROVIDE BEADING ON ROUND METAL DUCT 12" OR LARGER IN DIAMETER.
  3. PROVIDE MINIMUM 4" COLLARS FOR ATTACHMENT OF THE FLEXIBLE DUCT TO ROUND DUCT, DAMPERS AND DIFFUSERS.
  4. FLEXIBLE DUCT TO ROUND DUCT, DAMPERS AND DIFFUSERS. BAND RIGID ROUND DUCT INSULATION TO DUCT AND PROVIDE TAPE FOR INSULATION OVERLAP.

**A1** SUPPLY DIFFUSER  
NTS



**A3** ROUND DUCT TAKE OFF DETAIL  
NTS



- NOTES:
1. TOTALINE MODEL #P270-20001 UL 268A LISTED OR EQUIVALENT.
  2. RUGGED NORYL HOUSING WITH STRONG CLEAR POLYCARBONATE INSPECTION COVER. ACCOMMODATES ION (IONIZATION) OR PHOTO HEADS (PHOTOELECTRIC).
  3. SUITABLE FOR 4 WIRE 14-18 AWG WIRE. 24VAC/DC OR 120/220 VAC OPERATION. REMOTE TEST STATION OPTION.
  4. POWERED OUTPUTS FOR REMOTE LED AND AUDIBLE ALARM.
  5. AIR VELOCITY RATING FROM 300 TO 4000 FPM.
  6. EQUIPPED WITH A DPDT AUXILIARY RELAY.

**A4** DUCT SMOKE DETECTOR  
NTS