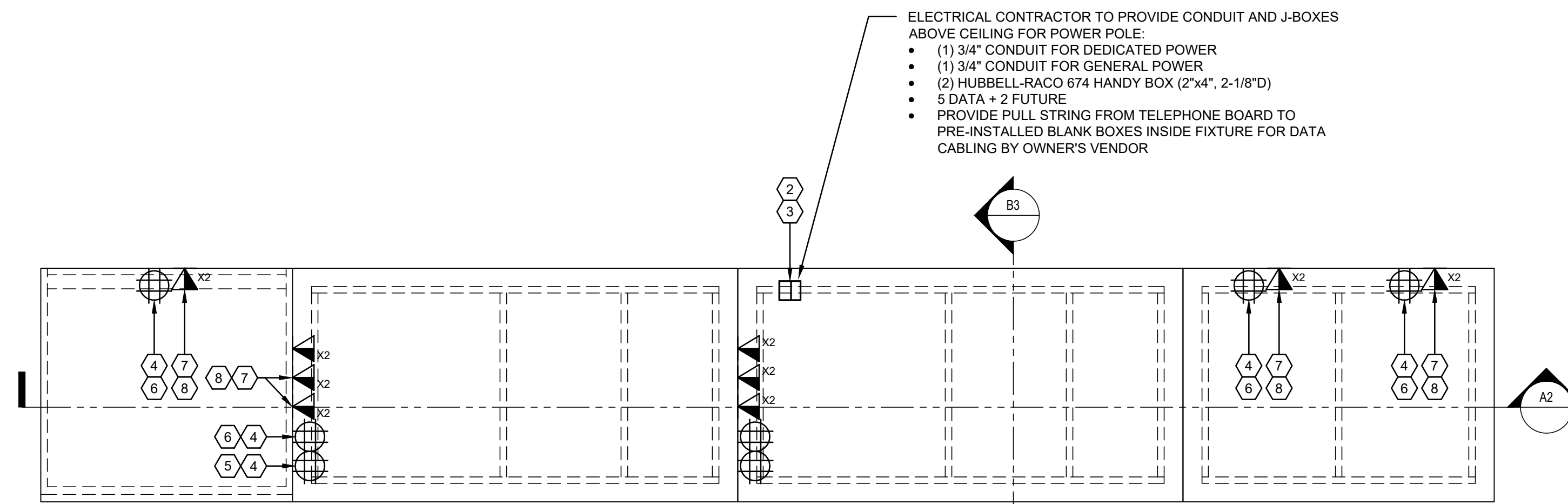


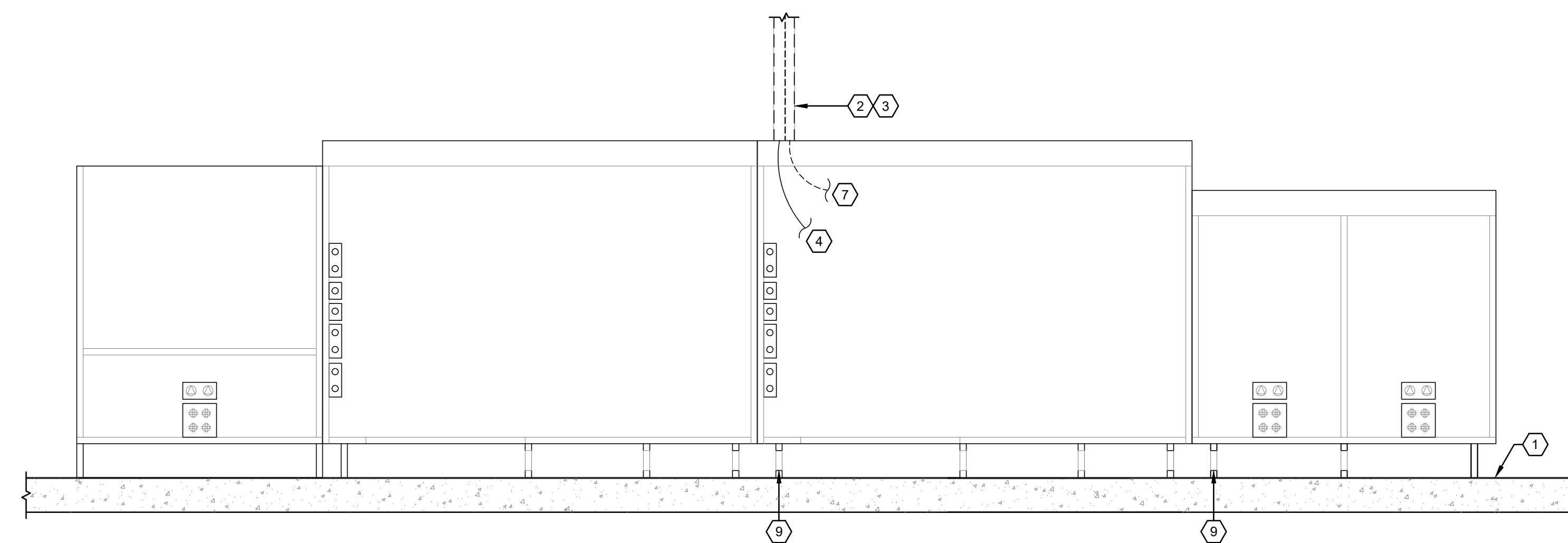
**B3** FF111 TYP SECTION VIEW  
1" = 1'-0"

SHEET NOTES	
#	NOTES
1	FINISH FLOOR, TYP.
2	POWER POLE: STD CAP - POWER DEEP CAP - DATA
3	ELECTRICAL CONTRACTOR TO PROVIDE CONDUIT AND J-BOXES ABOVE CEILING FOR POWER POLE
4	ELECTRICAL CONTRACTOR TO INSTALL POWER RECEPTACLES IN PRE-INSTALLED BLANK QUADPLEX BOXES INSIDE FIXTURE, PROVIDE POWER CIRCUIT FROM PANEL TO RECEPTACLES AND PROVIDE APPROVED FLEX CONNECTION ASSEMBLY TO POWER SOURCE AFTER FIXTURE INSTALLATION.
5	DEDICATED POWER.
6	GENERAL POWER.
7	ELECTRICAL CONTRACTOR TO PROVIDE PULL STRING FROM TELEPHONE BOARD TO PRE-INSTALLED BLANK BOXES INSIDE FIXTURE FOR CAT5E DATA CABLING AND RJ45 JACKS BY OWNER'S VENDOR.
8	OWNER'S VENDOR TO PROVIDE CAT5E DATA CABLING, RJ45 JACKS AND PLASTIC GROMMET TO FIT 3/4" KNOCK OUTS IN PRE-INSTALLED BLANK DUPLEX BOXES INSIDE FIXTURE AS REQ'D. ROUTE CABLING THROUGH CASEWORK AND MAKE CONNECTIONS TO RJ45 JACKS, TYP.
9	TOE KICK PASS THRU FOR CONDUCTOR/DATA FEEDS.



**B2** FF111 + FF111 + FF109 + FF102(CASH POD + CASH POD + PRINTER + ADA POD) - PLAN VIEW  
1" = 1'-0"

ELECTRICAL CONTRACTOR TO PROVIDE CONDUIT AND J-BOXES ABOVE CEILING FOR POWER POLE:  
 • (1) 3/4" CONDUIT FOR DEDICATED POWER  
 • (1) 3/4" CONDUIT FOR GENERAL POWER  
 • (2) HUBBELL-RACO 674 HANDY BOX (2"x4", 2-1/8"D)  
 • 5 DATA + 2 FUTURE  
 • PROVIDE PULL STRING FROM TELEPHONE BOARD TO PRE-INSTALLED BLANK BOXES INSIDE FIXTURE FOR DATA CABLING BY OWNER'S VENDOR



**A2** FF111 + FF111 + FF109 + FF102(CASH POD + CASH POD + PRINTER + ADA POD) - SECTION VIEW  
1" = 1'-0"

Firm's License #

State License #

#	DESCRIPTION	DATE
1	BUILDING DEPARTMENT	7/26/17

US HWY 50 & CLUB MANOR DR  
908 W US HWY 50  
PUEBLO, CO 81008

FIXTURE FEED WIRING DETAILS

MDC  
CORPORATE - RELO  
**686**  
DESIGN DEVELOPMENT

DATE: 12/21/2017  
SCALE: 1/4"=1'-0"  
DRAWN BY: XXX  
PROJECT No.: TMO364  
SHEET:

**E504**