

SHEET NOTES	
#	NOTES
1	FINISH FLOOR, TYP.
2	POWER POLE: STD CAP - POWER DEEP CAP - DATA
3	ELECTRICAL CONTRACTOR TO PROVIDE CONDUIT AND J-BOXES ABOVE CEILING FOR POWER POLE
4	ELECTRICAL CONTRACTOR TO INSTALL POWER RECEPTACLES IN PRE-INSTALLED BLANK QUADPLEX BOXES INSIDE FIXTURE, PROVIDE POWER CIRCUIT FROM PANEL TO RECEPTACLES AND PROVIDE APPROVED FLEX CONNECTION ASSEMBLY TO POWER SOURCE AFTER FIXTURE INSTALLATION.
5	DEDICATED POWER.
6	GENERAL POWER.
7	ELECTRICAL CONTRACTOR TO PROVIDE PULL STRING FROM TELEPHONE BOARD TO PRE-INSTALLED BLANK BOXES INSIDE FIXTURE FOR CAT5E DATA CABLING AND RJ45 JACKS BY OWNER'S VENDOR.
8	OWNER'S VENDOR TO PROVIDE CAT5E DATA CABLING, RJ45 JACKS AND PLASTIC GROMMET TO FIT 3/4" KNOCK OUTS IN PRE-INSTALLED BLANK DUPLEX BOXES INSIDE FIXTURE AS REQ'D. ROUTE CABLING THROUGH CASEWORK AND MAKE CONNECTIONS TO RJ45 JACKS, TYP.
9	TOE KICK PASS THRU FOR CONDUCTOR/DATA FEEDS.

Firm's License #

State License #

#	DESCRIPTION	DATE
1	BUILDING DEPARTMENT	7/26/17

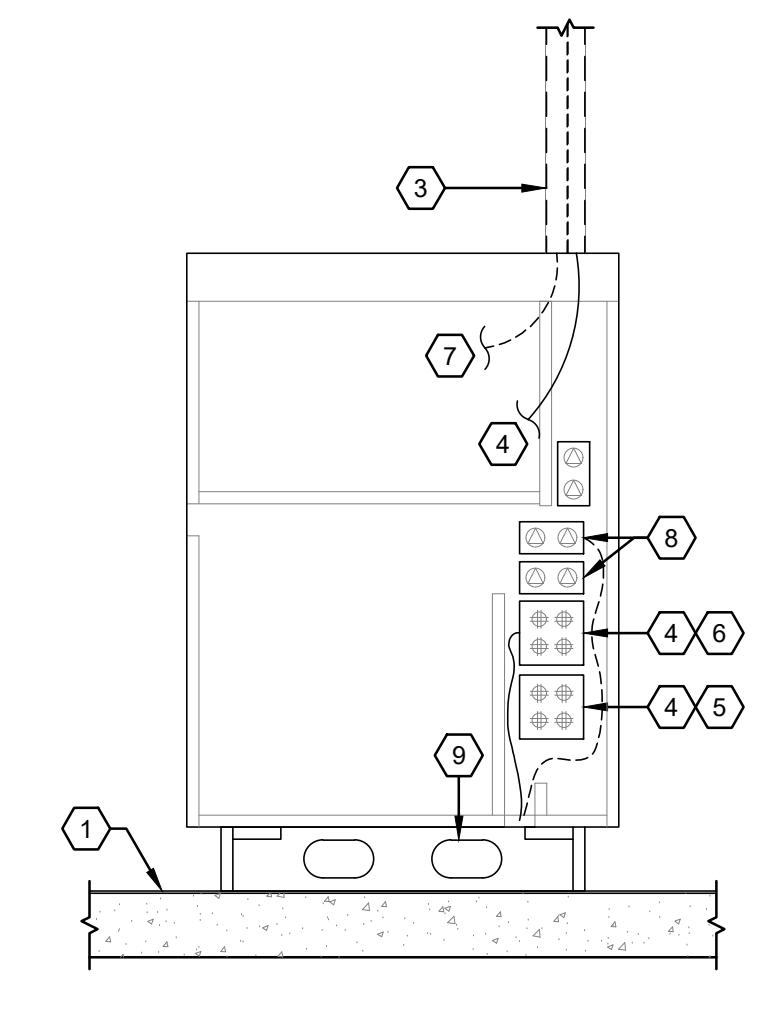
US HWY 50 & CLUB MANOR DR  
908 W US HWY 50  
PUEBLO, CO 81008

FIXTURE FEED WIRING DETAILS

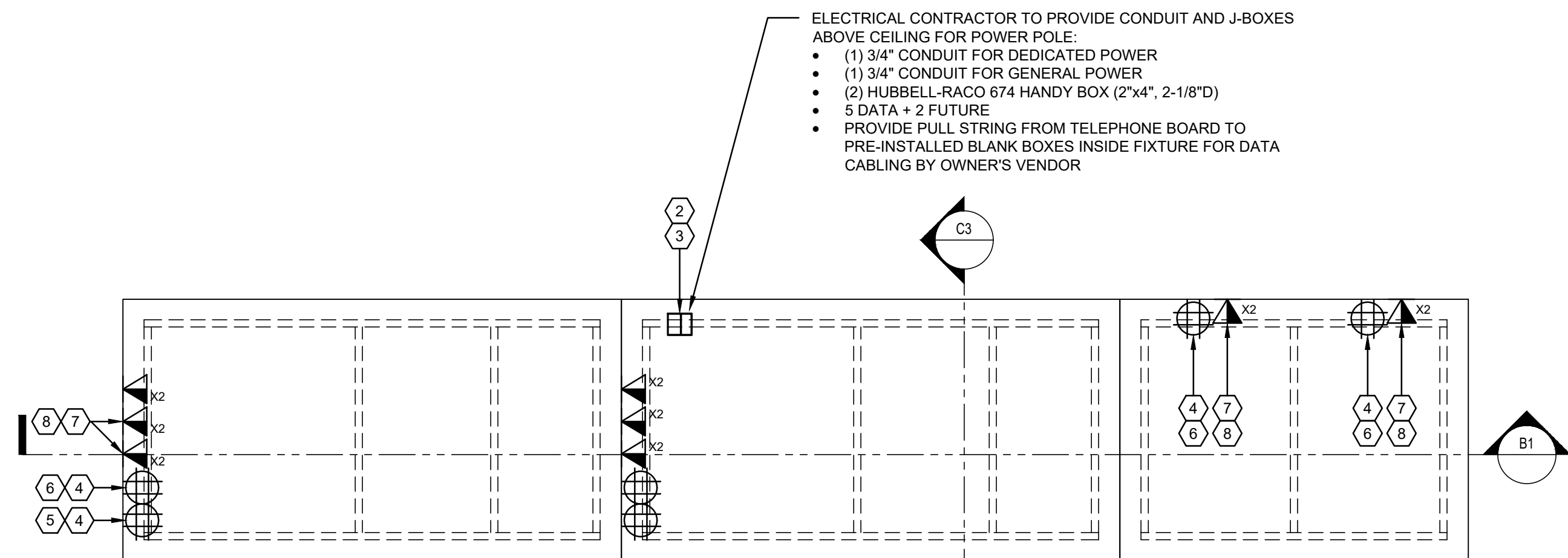
MDC  
CORPORATE - RELO  
**686**  
DESIGN DEVELOPMENT

DATE: 12/21/2017  
SCALE: 1/4"=1'-0"  
DRAWN BY: XXX  
PROJECT No.: TMO364  
SHEET:

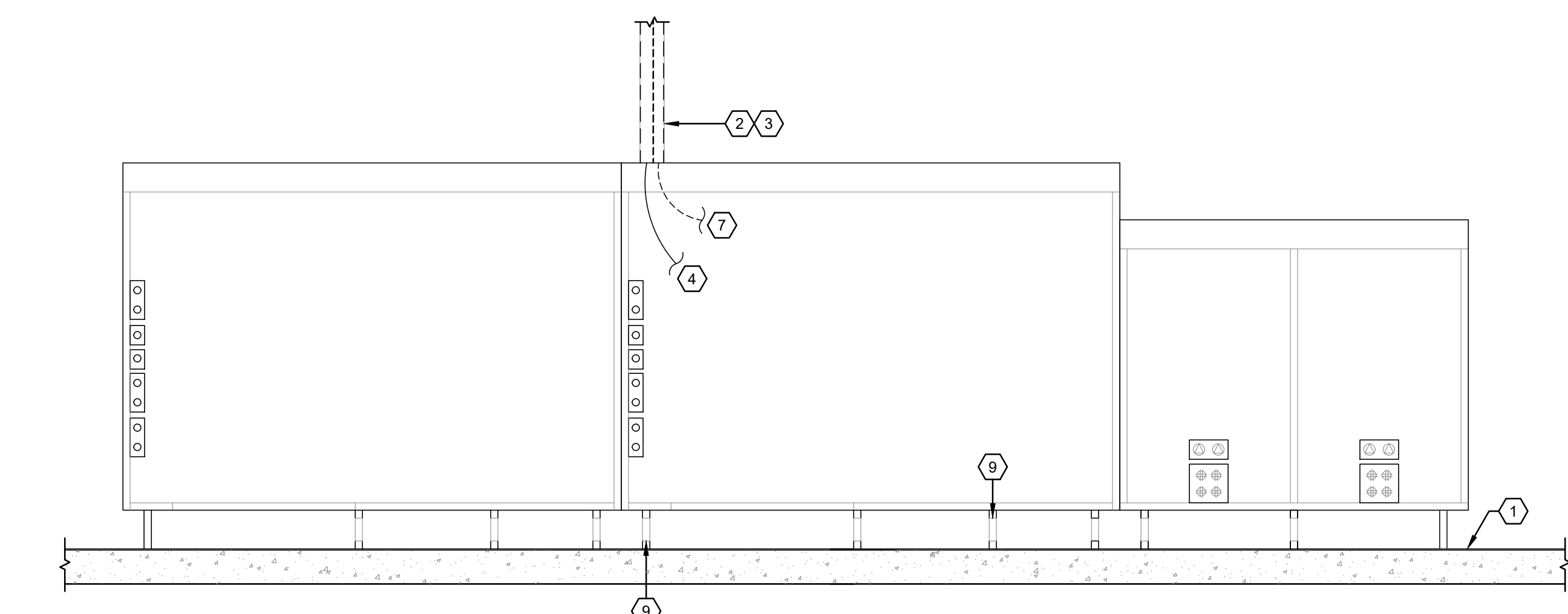
**E503**



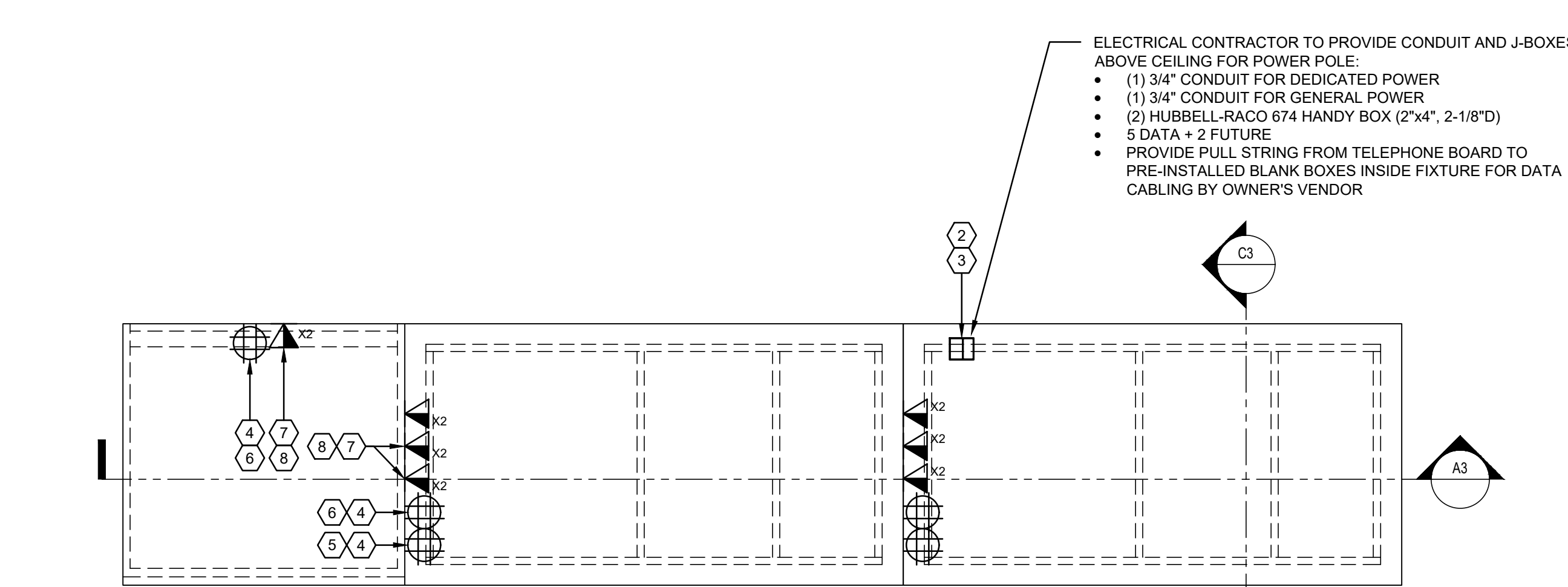
**C3** FF111 TYP SECTION VIEW  
1" = 1'-0"



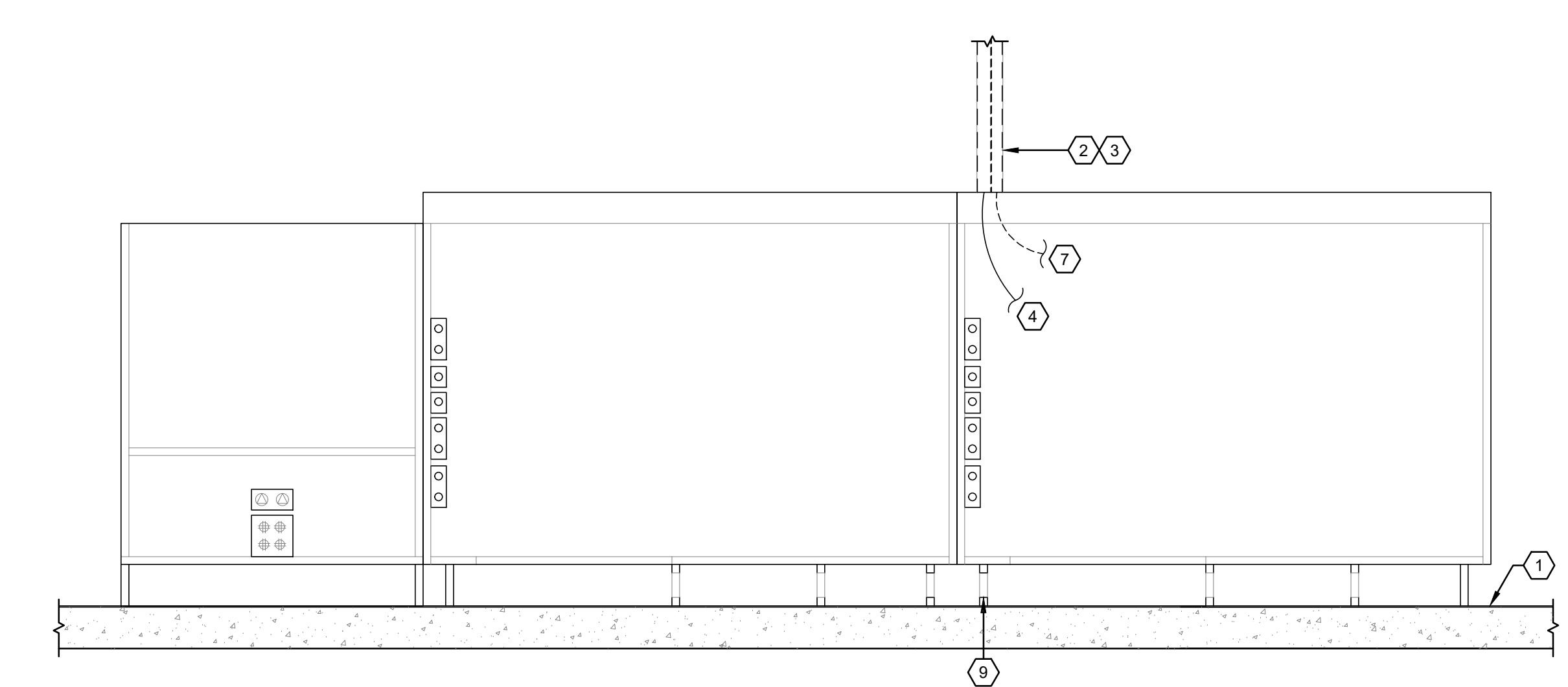
**C1** FF111 + FF111 + FF102(CASH POD + CASH POD + ADA POD) - PLAN VIEW  
1" = 1'-0"



**B1** FF111 + FF111 + FF102(CASH POD + CASH POD + ADA POD) - SECTION VIEW  
1" = 1'-0"



**A1** FF111 + FF111 + FF109(CASH POD + CASH POD + PRINTER) - PLAN VIEW  
1" = 1'-0"



**A3** FF111 + FF111 + FF109(CASH POD + CASH POD + PRINTER) - SECTION VIEW  
1" = 1'-0"