

Firm's License #

State License #

#	DESCRIPTION	DATE
1	BUILDING DEPARTMENT	7/26/17

US HWY 50 & CLUB MANOR DR
908 W US HWY 50
PUEBLO, CO 81008

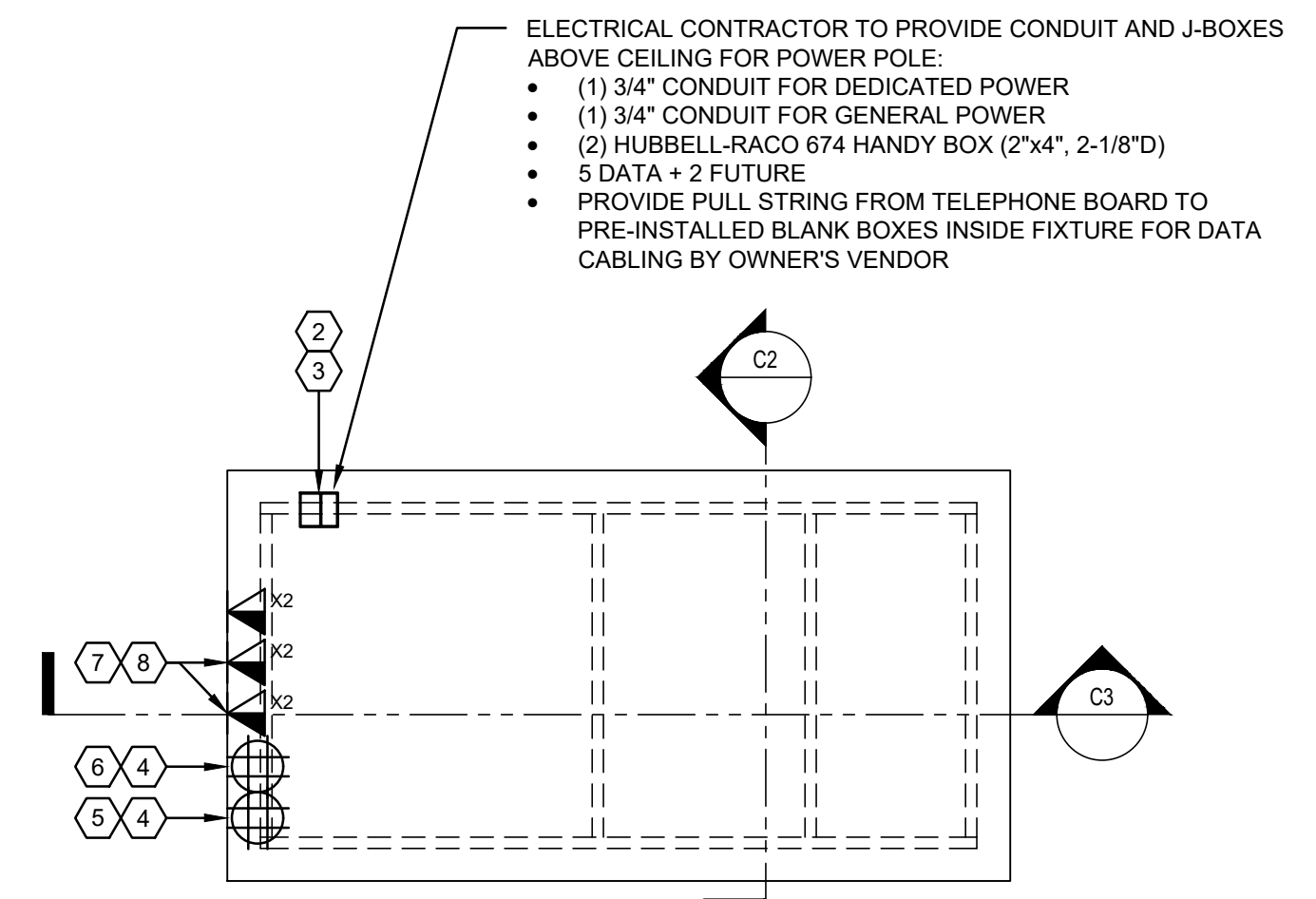
FIXTURE FEED WIRING DETAILS

MDC
CORPORATE - RELO
686
DESIGN DEVELOPMENT

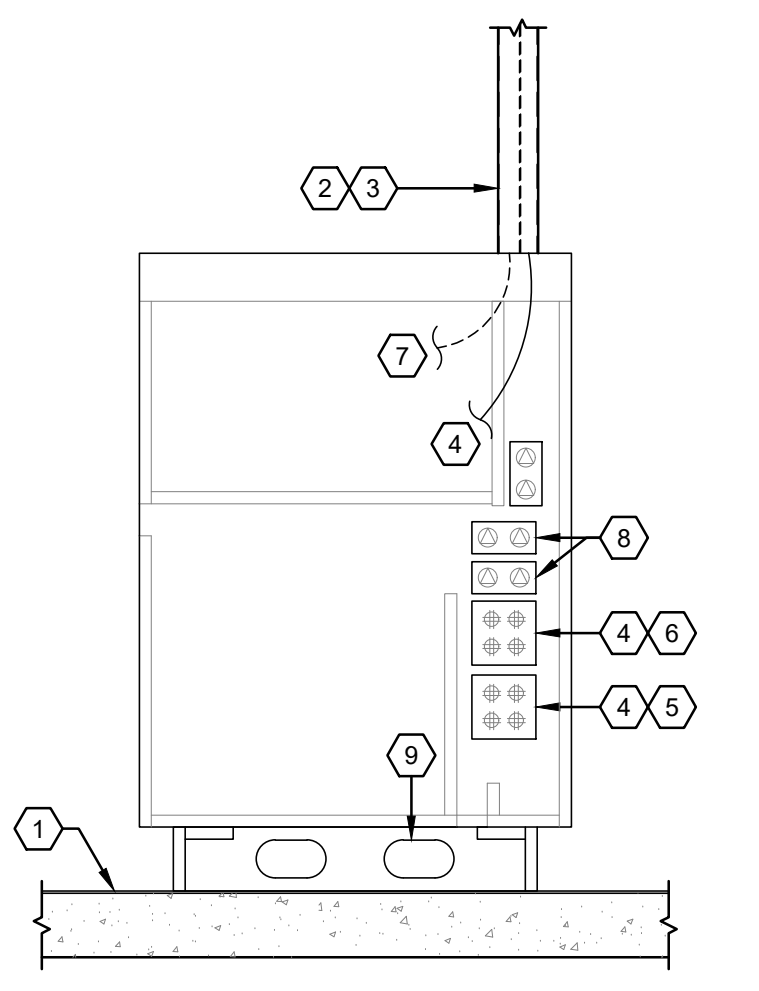
DATE: 12/21/2017
SCALE: 1/4"=1'-0"
DRAWN BY: XXX
PROJECT No.: TMO364
SHEET:

E501

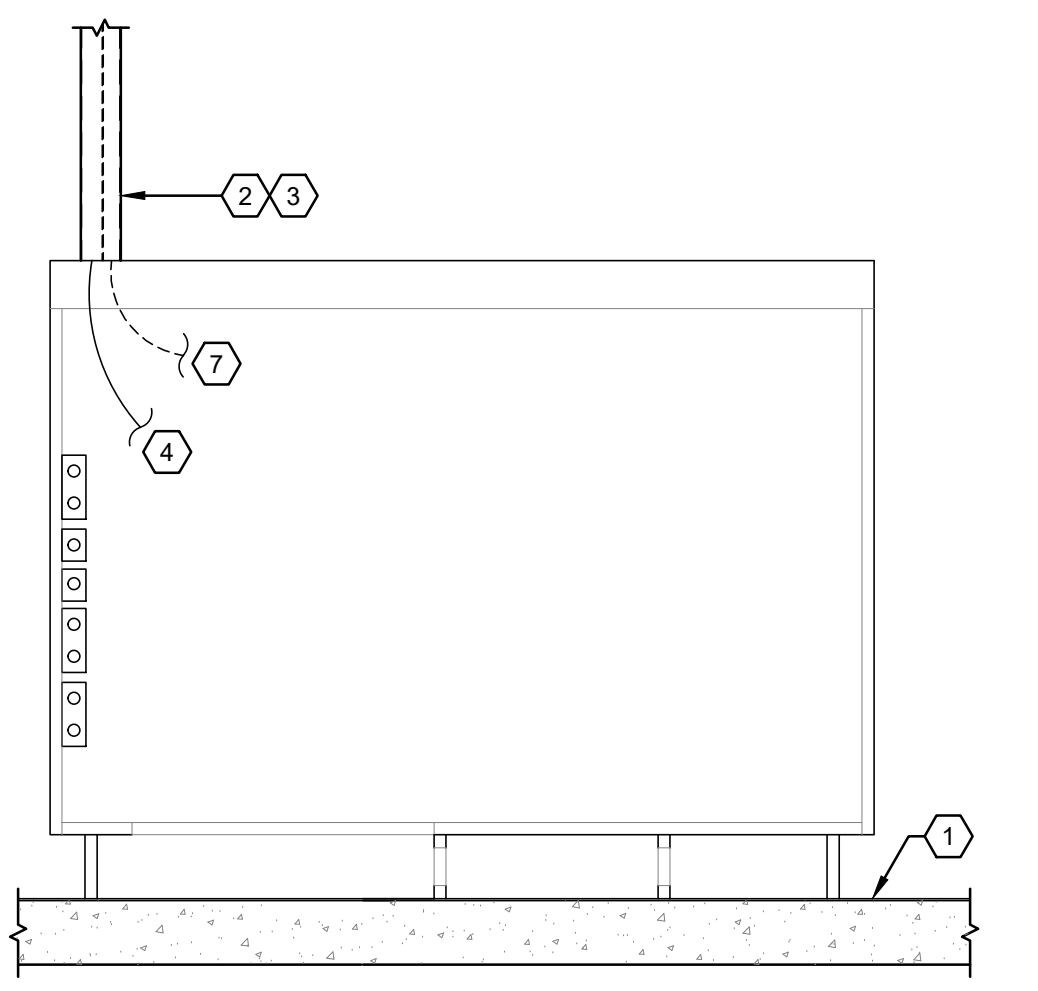
SHEET NOTES	
#	NOTES
1	FINISH FLOOR, TYP.
2	POWER POLE: STD CAP - POWER DEEP CAP - DATA
3	ELECTRICAL CONTRACTOR TO PROVIDE CONDUIT AND J-BOXES ABOVE CEILING FOR POWER POLE
4	ELECTRICAL CONTRACTOR TO INSTALL POWER RECEPTACLES IN PRE-INSTALLED BLANK QUADPLEX BOXES INSIDE FIXTURE, PROVIDE POWER CIRCUIT FROM PANEL TO RECEPTACLES AND PROVIDE APPROVED FLEX CONNECTION ASSEMBLY TO POWER SOURCE AFTER FIXTURE INSTALLATION.
5	DEDICATED POWER.
6	GENERAL POWER.
7	ELECTRICAL CONTRACTOR TO PROVIDE PULL STRING FROM TELEPHONE BOARD TO PRE-INSTALLED BLANK BOXES INSIDE FIXTURE FOR CAT5E DATA CABLING AND RJ45 JACKS BY OWNER'S VENDOR.
8	OWNER'S VENDOR TO PROVIDE CAT5E DATA CABLING, RJ45 JACKS AND PLASTIC GROMMET TO FIT 3/4" KNOCK OUTS IN PRE-INSTALLED BLANK DUPLEX BOXES INSIDE FIXTURE AS REQ'D. ROUTE CABLING THROUGH CASEWORK AND MAKE CONNECTIONS TO RJ45 JACKS, TYP.
9	TOE KICK PASS THRU FOR CONDUCTOR/DATA FEEDS.



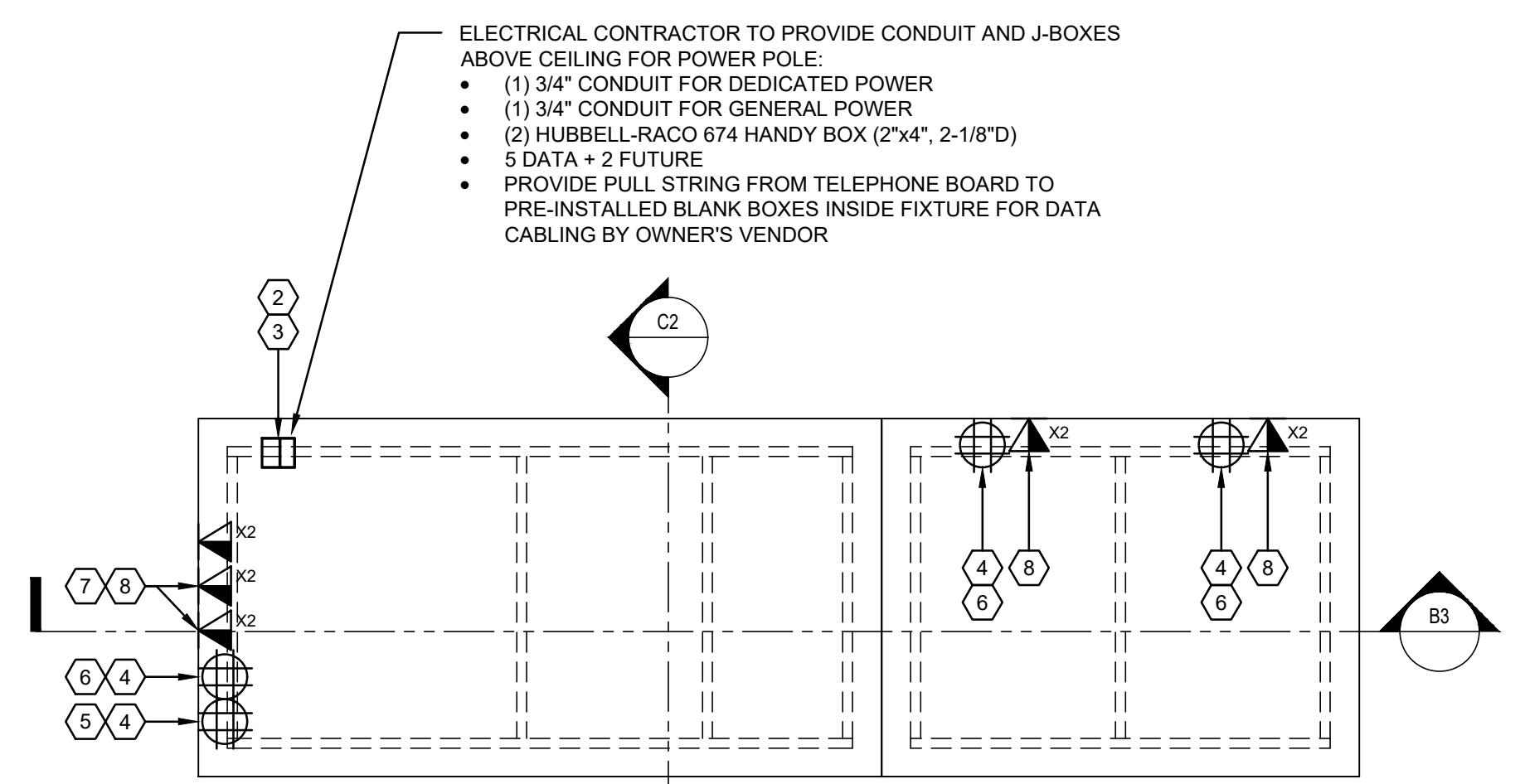
C1 FF111(CASH POD) - PLAN VIEW
1" = 1'-0"



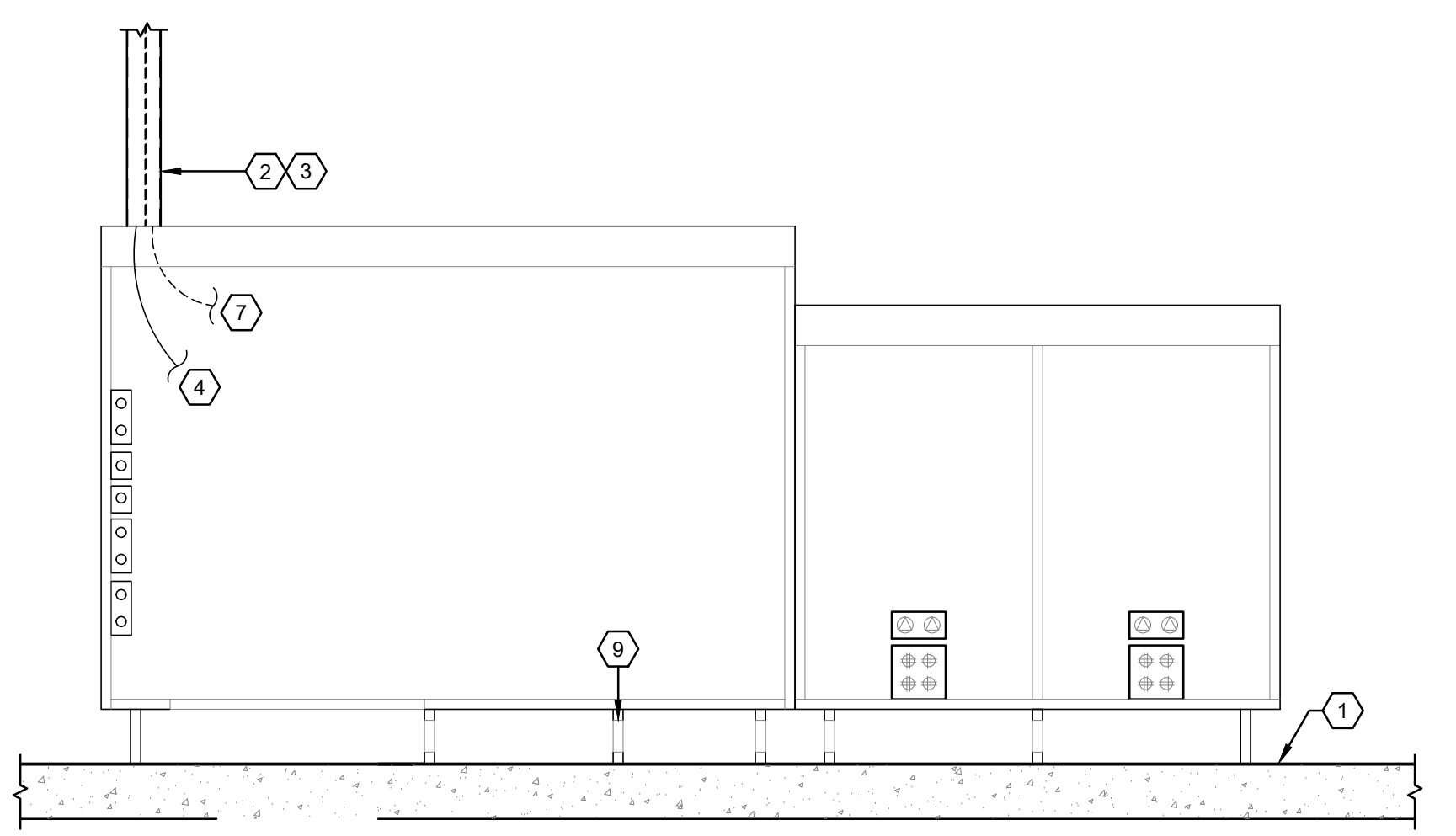
C2 FF111 TYP SECTION VIEW
1" = 1'-0"



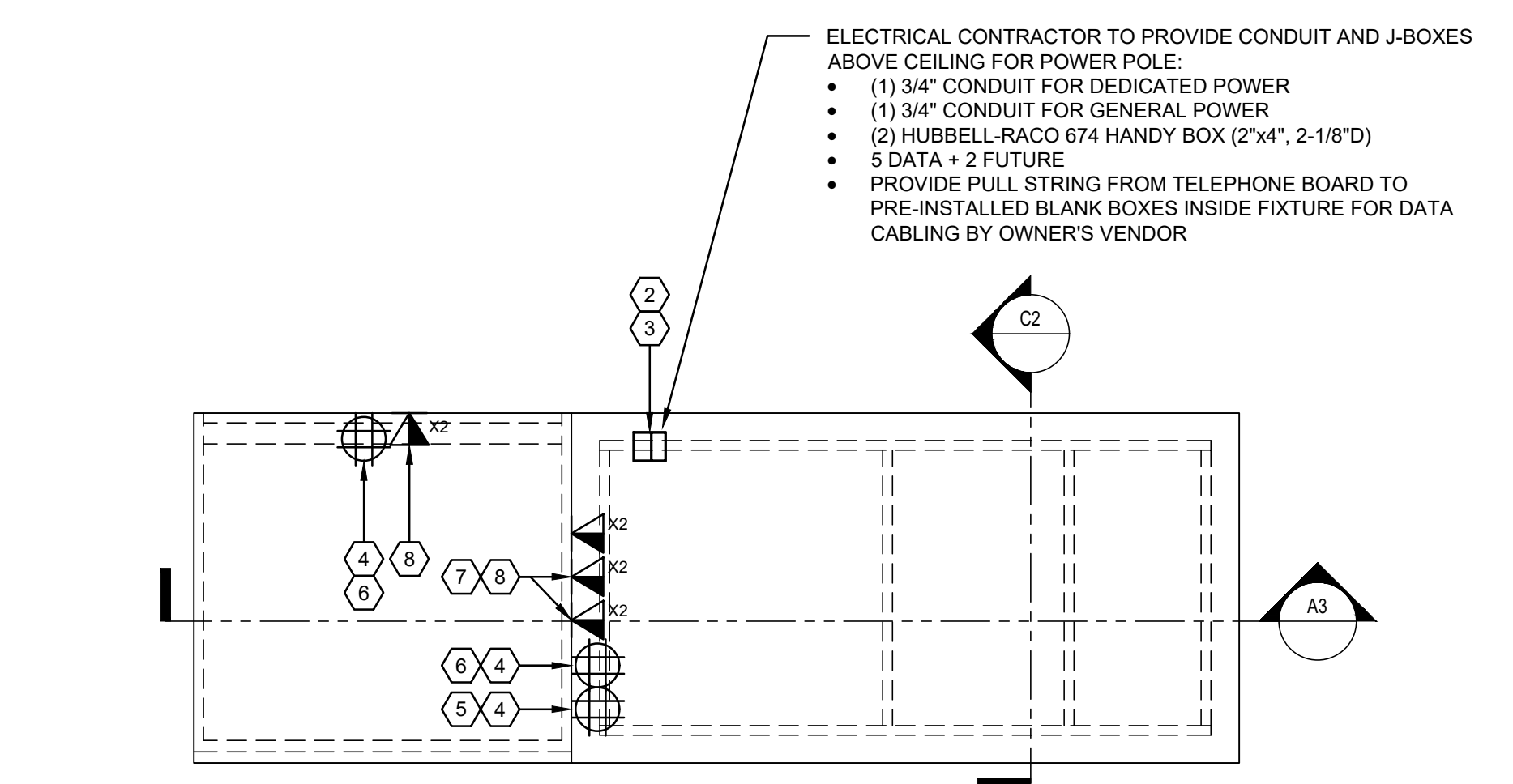
C3 FF111(CASH POD) - SECTION VIEW
1" = 1'-0"



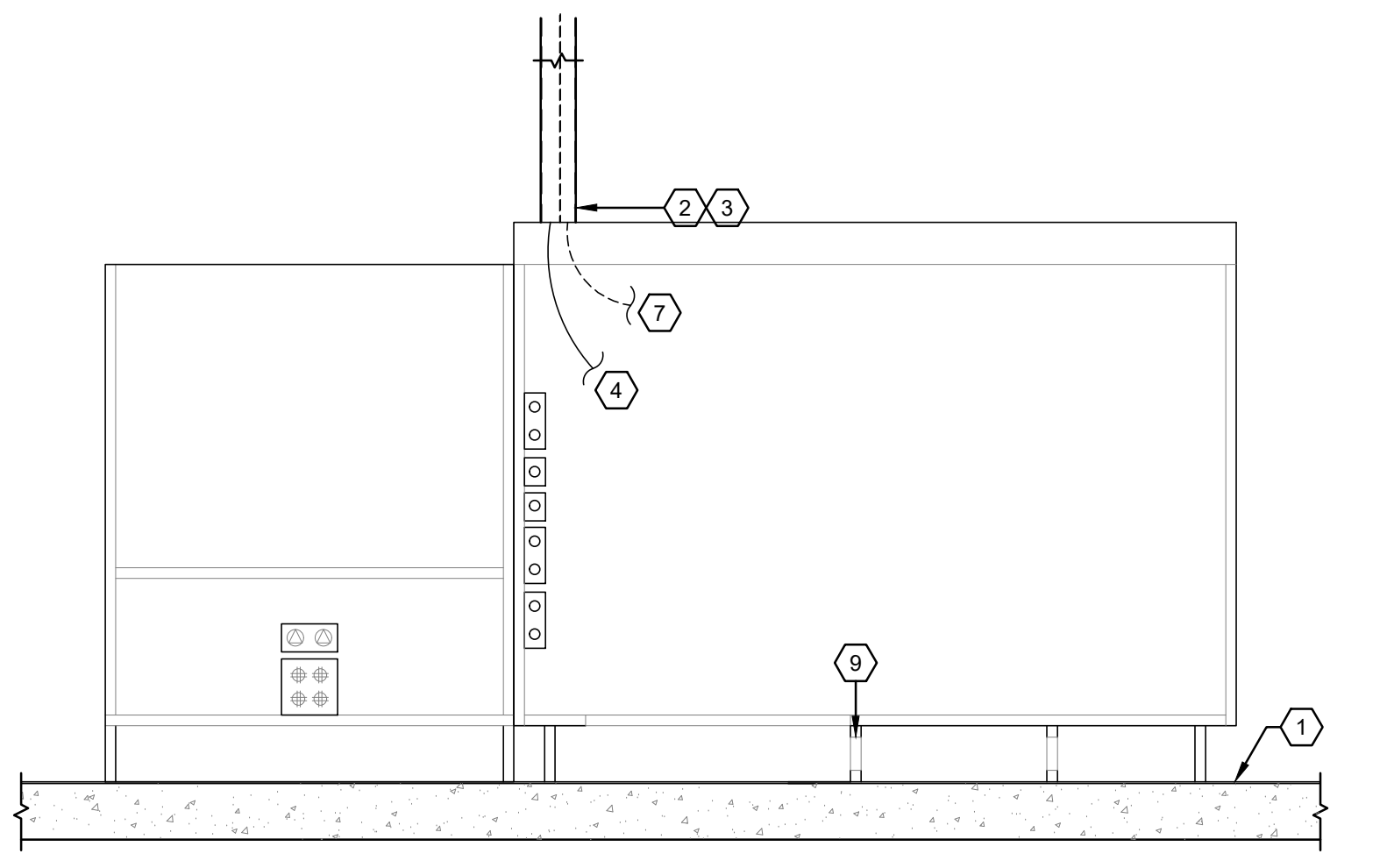
B1 FF111 + FF102(CASH POD + ADA POD) - PLAN VIEW
1" = 1'-0"



B3 FF111 + FF102(CASH POD + ADA POD) - SECTION VIEW
1" = 1'-0"



A1 FF111 + FF109(CASH POD + PRINTER) - PLAN VIEW
1" = 1'-0"



A3 FF111 + FF109(CASH POD + PRINTER) - SECTION VIEW
1" = 1'-0"