

Firm's License #

State License #

#	DESCRIPTION	DATE
1	BUILDING DEPARTMENT	7/26/17

US HWY 50 & CLUB MANOR DR
908 W US HWY 50

PUEBLO, CO 81008

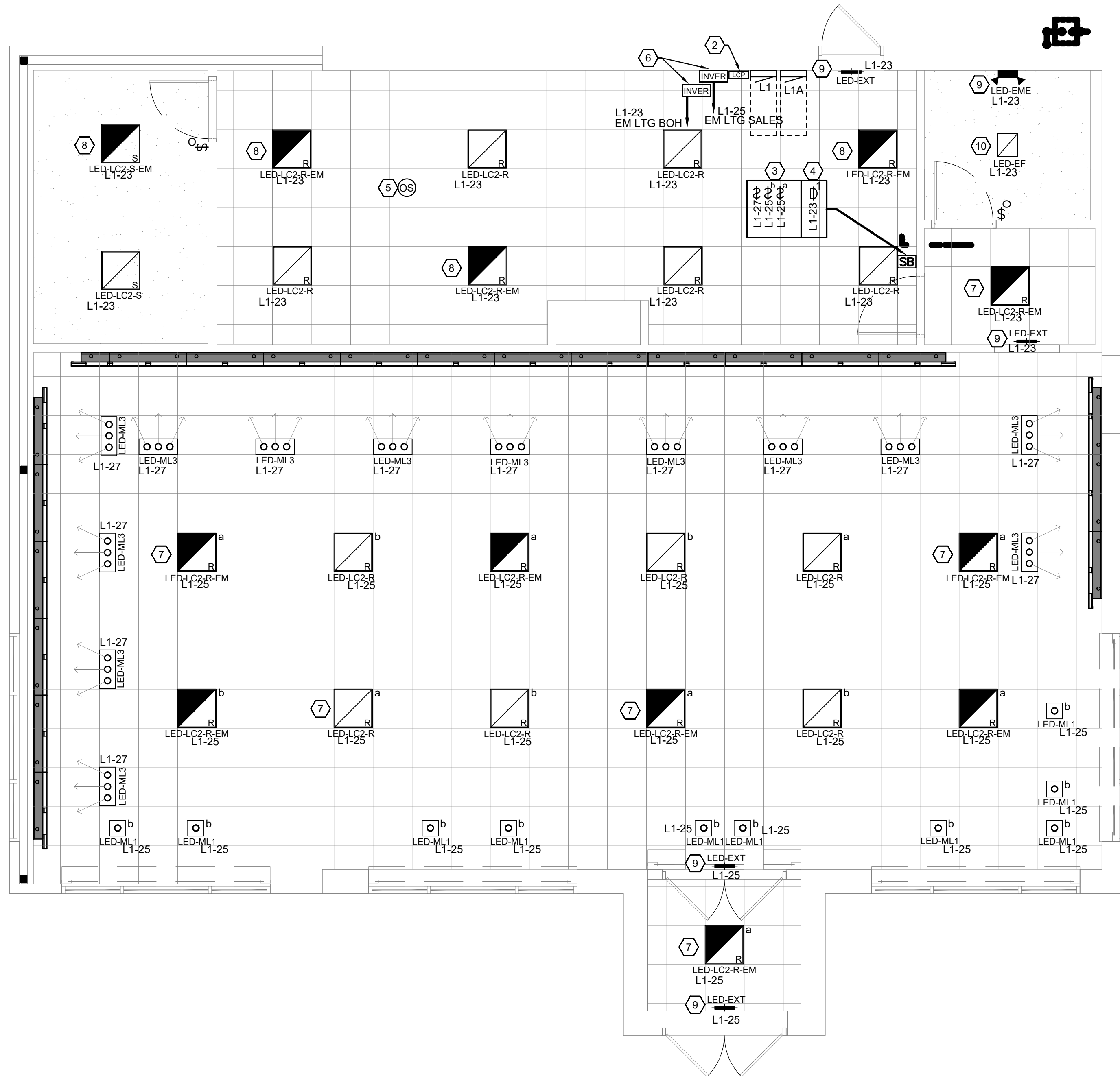
LIGHTING FLOOR PLAN

MDC
CORPORATE - RELO
686

DESIGN DEVELOPMENT

DATE: 12/21/2017
SCALE: 1/4" = 1'-0"
DRAWN BY: XXX
PROJECT No.: TMO384
SHEET:

E111



B1 LIGHTING FLOOR PLAN

1/4" = 1'-0"

KEYED NOTES

#	NOTES
1	PROVIDE AND INSTALL JUNCTION BOX FOR EXTERIOR SIGNAGE. COORDINATE LOCATION WITH SIGN VENDOR. HOME RUN THROUGH LIGHTING CONTROL PANEL (LCP). PROVIDE HO WITH FULL STRING TO TENANT'S EXTERIOR SIGNS FROM ELECTRIC PANEL TO J BOX. PROVIDE DISCONNECT AS REQUIRED.
2	LIGHTING CONTROL PANEL (LCP). DOUGLAS LIGHTING CONTROLS LITEPAK WPAK-33518-S* (120/277 8-RELAY CONTROL PANEL.) INSTALL NEW LCP ADJACENT TO ELECTRICAL PANEL.
3	LIGHTING CONTROL PANEL (LCP) OVERRIDE SWITCHES. MOUNT AT 42" AFF. SEE SWITCH BANK DETAIL ON SHEET E112.
4	WALL MOUNTED DIMMER OCCUPANCY SENSOR. SET MODE TO FIXD AND ADJUST TO AUTOMATICALLY TURN LIGHTS ON TO NO MORE THAN 50% PERCENT POWER PER SECTION C405.2.2.2. SEE SWITCH BANK DETAIL ON SHEET E112.
5	CEILING MOUNTED OCCUPANCY SENSOR(S).
6	LED MINI-INVERTER FOR SALES/BOH EMERGENCY LIGHTING. REFER TO MYERS POWER PRODUCTS "LV SERIES" WIRING DIAGRAM(S) INCLUDED WITH EQUIPMENT.
7	ALL SALES FLOOR LIGHT FIXTURES LABELED EM (EMERGENCY EGRESS) TO BE WIRED TO THE LED MINI-INVERTER. REFER TO MYERS POWER PRODUCTS "LV SERIES" WIRING DIAGRAM(S) INCLUDED WITH EQUIPMENT.
8	ALL BOH LIGHT FIXTURES LABELED EM (EMERGENCY EGRESS) TO BE WIRED TO THE LED MINI-INVERTER. REFER TO MYERS POWER PRODUCTS "LV SERIES" WIRING DIAGRAM(S) INCLUDED WITH EQUIPMENT.
9	ALL EXIT SIGNS AND DUAL HEAD EMERGENCY LIGHTS ARE TO BE WIRED TO LOCAL CIRCUIT ON AN UNSWITCHED LEG AHEAD OF ANY LOCAL SWITCHING OR CONTROLS. EXIT SIGNS AND DUAL HEAD EMERGENCY LIGHTS ARE PROVIDED WITH WITH A 90 MINUTE BATTERY BACK-UP AND SHOULD NOT BE WIRED THROUGH THE MINI-INVERTER.
10	CEILING MOUNTED VENTILATION FAN WITH LED LIGHT. PROVIDE WALL MOUNTED OCCUPANCY SENSOR.

GENERAL NOTES

- ALL EQUIPMENT SHALL BE LISTED BY A RECOGNIZED TESTING LAB (i.e. U.L., ETC.)
- LUMINAIRES IN CONTACT WITH INSULATION SHALL BE U.L. LISTED FOR THERMAL BARRIER OR PROVIDED WITH 3" MINIMUM CLEARANCE.
- CONTRACTOR TO ENSURE THAT ALL LIGHTING EXPOSED TO THE PLENUM IS PLENUM RATED.
- ALL RECESSED LUMINAIRES IN SALES AREA SHALL BE CENTERED IN/ON CEILING TILE. PROVIDE ADDITIONAL SUPPORT PER MFG. RECOMMENDATIONS FROM STRUCTURE ABOVE FOR ALL LUMINAIRES ATTACHED TO HUNG CEILINGS.
- SEE REFLECTED CEILING PLAN FOR ACTUAL LUMINAIRE LOCATIONS AND DIMENSIONS.
- ALL EXIT SIGNS AND DUAL HEAD EMERGENCY LIGHTS TO HAVE 90 MIN. BATTERY BACKUP.
- T.G.C. TO VERIFY EXIT DISCHARGE LIGHTING MEETS CODE. WHERE REQUIRED T.G.C. SHALL PROVIDED CODE COMPLIANT EXIT DISCHARGE LIGHTING. IF NOT PRESENT.

WHEN REQUIRED, IT IS THE OWNER'S RESPONSIBILITY TO CONTRACT WITH A COMMISSIONING AUTHORITY TO COMPLY WITH LOCAL CODES.