

Firm's License #

State License #

#	DESCRIPTION	DATE
1	BUILDING DEPARTMENT	7/26/17

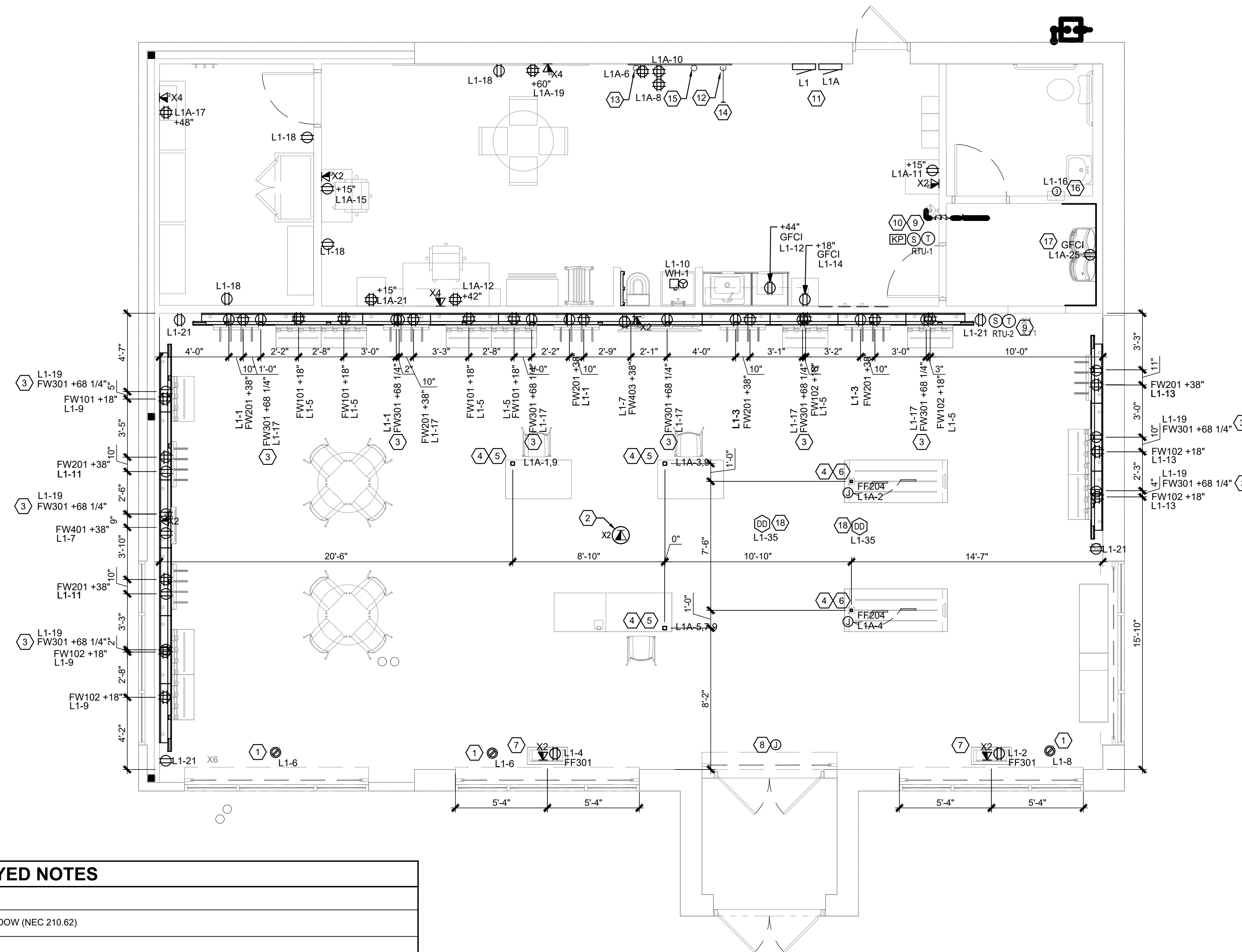
US HWY 50 & CLUB MANOR DR
908 W US HWY 50
PUEBLO, CO 81008

POWER FLOOR PLAN

MDC
CORPORATE - RELO
686
DESIGN DEVELOPMENT

DATE: 12/21/2017
SCALE: 1/4" = 1'-0"
DRAWN BY: XXX
PROJECT No.: TMO364
SHEET:

E101



#	NOTES
1	SHOW WINDOW RECEPTACLE(S). LOCATE 18" FROM TOP OF WINDOW (NEC 210.62)
2	PROVIDE OVERHEAD AP CABLING ABOVE CEILING 3'-0" MIN.
3	LED BACK LIGHTING OUTLET MOUNTED AT 68-1/4" A.F.F. PROVIDE LOCK ON DEVICE ON BREAKER AT ELECTRIC PANEL.
4	PROVIDE CIRCUIT(S) AND LOW VOLTAGE WIRING AS REQD TO J-BOX ABOVE CEILING FOR POWERPOLE TO FLOOR FIXTURES.
5	POWER POLE TO FF405 FIXTURE. SEE WIRING DETAILS ON SHEETS E501. • CONDUIT SCHEDULE: FF405: (1) 3/4" DEDICATED POWER & (1) 3/4" GENERAL POWER FF405 + FF404: (1) 3/4" DEDICATED POWER & (1) 3/4" GENERAL POWER • ELECTRICAL CONTRACTOR TO PROVIDE: CONDUIT AND J-BOXES ABOVE CEILING FOR POWER POLE. PROVIDE POWER FROM PANEL TO CEILING MOUNTED J-BOXES. LEAVE FLEX CONNECTION ASSEMBLY COILED AND TAPED AS REQUIRED UNTIL FIXTURE INSTALLATION. AFTER FIXTURE INSTALLATION ELECTRICAL CONTRACTOR TO PROVIDE APPROVED FLEX CONNECTION ASSEMBLY TO POWER SOURCE ROUTED THROUGH POWER POLE TO E.C. PROVIDED POWER RECEPTACLES IN PRE-INSTALLED BLANK BOXES INSIDE FIXTURE. PROVIDE PULL STRING(S) FROM TELEPHONE BOARD TO SURFACE MOUNTED J-BOXES IN FIXTURE FOR CAT5E DATA CABLING AND RJ45 JACKS BY OWNER'S VENDOR. • OWNER'S VENDOR TO PROVIDE: CAT5E DATA CABLING, RJ45 JACKS AND PLASTIC GROMMET TO FIT 3/4" KNOCK OUTS IN PRE-INSTALLED BLANK DUPLEX BOX BY FIXTURE MANUFACTURER AS REQUIRED. ROUTE CABLING THROUGH CASEWORK AND MAKE CONNECTIONS TO RJ45 JACKS, TYP.
6	POWER POLE TO FF202/204 FIXTURE. SEE WIRING DETAILS ON SHEET E511. • CONDUIT SCHEDULE: FF202/204: (1) 3/4" DEDICATED POWER • ELECTRICAL CONTRACTOR TO PROVIDE: CONDUIT AND J-BOX ABOVE CEILING FOR POWER POLE. PROVIDE POWER FROM PANEL TO CEILING MOUNTED J-BOX. LEAVE FLEX CONNECTION ASSEMBLY COILED AND TAPED AS REQUIRED UNTIL FIXTURE INSTALLATION. AFTER FIXTURE INSTALLATION ELECTRICAL CONTRACTOR TO PROVIDE APPROVED FLEX CONNECTION ASSEMBLY TO POWER SOURCE ROUTED THROUGH POWER POLE TO PRE-INSTALLED J-BOX IN FIXTURE. INSTALL FIXTURE MANUFACTURER SUPPLIED POWER STRIP AND FINAL CONNECTION TO POWER SOURCE.
7	CEILING MOUNTED J-BOX(S) ABOVE FF301/303 FIXTURE. SEE WIRING DETAILS ON SHEET E511. • CONDUIT SCHEDULE: FF301/303: (1) 3/4" GENERAL POWER, (1) 3/4" DATA • ELECTRICAL CONTRACTOR TO PROVIDE: ELECTRICAL CONTRACTOR TO PROVIDE CONDUIT AND POWER CIRCUIT FROM PANEL TO J-BOX ABOVE CEILING. PROVIDE APPROVED BX CABLE CONNECTION ASSEMBLY FROM CEILING J-BOX AND EXTEND CIRCUIT TO BLANK DUPLEX BOX INSIDE FIXTURE. BX CABLE SHOULD BE SUSPENDED IN CEILING PER CODE REQUIREMENTS. BLANK DUPLEX BOX CAN BE INSTALLED IN EITHER SIDE OF FIXTURE. ELECTRICAL CONTRACTOR TO PROVIDE DUPLEX RECEPTACLE AND MAKE ALL FINAL CONNECTIONS. ELECTRICAL CONTRACTOR TO PROVIDE CONDUIT & PULL STRING FROM TELEPHONE BOARD TO DFW FIXTURE FOR DATA CABLING AND RJ45 CONNECTION BY OWNER'S VENDOR. PROVIDE ADDITIONAL CEILING MOUNTED J-BOX FOR DATA IF REQUIRED BY LOCAL JURISDICTION. • OWNER'S VENDOR TO PROVIDE: CAT5E CABLING FOR DATA FROM TELCO CLOSET TO DFW FIXTURE. PROVIDE RJ45 CONNECTOR AS REQD AND MAKE FINAL CONNECTION TO PC WITHIN FIXTURE. IT VENDOR TO TERMINATE CONNECTORS ON BOTH SIDES OF CAT5E CABLING.

#	NOTES
8	PROVIDE DATA BOX ABOVE CEILING FOR SHOPPER TRACKER. OWNER'S VENDOR WILL EXTEND CABLING BACK TO TELEPHONE BACK BOARD.
9	PROVIDE NEW "HONEYWELL" MODEL TB8220 WALL MOUNTED PROGRAMMABLE THERMOSTAT. MOUNT AT 48" A.F.F. PROVIDE REMOTE SENSORS MOUNTED AT 60" A.F.F. FOR TEMPERATURE BALANCING.
10	ROUGH IN FOR ADT KEYPAD. MOUNT AT 48" A.F.F. COORDINATE EXACT LOCATION WITH SECURITY COMPANY.
11	ELECTRICAL EQUIPMENT. SEE ONLINE DIAGRAM ON SHEET E301. T.G.C. TO PROVIDE ALL NEC CLEARANCES.
12	PROVIDE TELEPHONE BACKBOARD. SEE ELEVATION ON SHEET E302 FOR DETAILS.
13	PROVIDE 2" CONDUIT PULL CORD FROM LANDLORD TELEPHONE BACKBOARD TO THE TENANT TELEPHONE BACKBOARD.
14	PROVIDE (1) 2" CONDUIT FOR ADT CABLES.
15	PROVIDE (1) 3" CONDUIT FOR CAT 5E CABLES.
16	PROVIDE CONNECTION TO AUTOMATIC HAND DRYER AT 34" AFF. (HAND DRYER FURNISHED BY OWNER THROUGH LIGHTING VENDOR). SEE ARCH DETAILS FOR LOCATION.
17	MOUNT GFI RECEPTACLE PER MANUFACTURERS RECOMMENDATION/ TEMPLATE
18	COORDINATE DUCT DETECTOR, THERMOSTAT, AND TEMP SENSOR INSTALLATION WITH HVAC CONTRACTOR.

WIRING SYMBOLS	
X2	DUPLEX RJ45 JACK W/ 2 CAT5e WIRES
X4	QUADPLEX RJ45 JACK W/ 4 CAT5e WIRES
AP	OVERHEAD AP CABLING

GENERAL NOTES	
A.	ALL WORK SHALL COMPLY WITH THE CURRENTLY ADOPTED CODES, ORDINANCES, AND AMENDMENTS.
B.	ALL EQUIPMENT SHALL BE LISTED BY A RECOGNIZED TESTING LAB (i.e. U.L., ETC.)
C.	PROVIDE PLENUM RATED WIRING WHERE REQUIRED. COMPLY WITH NEC 300.22.
D.	PROPERLY GROUND RECEPTACLES, BOXES AND COVER PLATES INSTALLED
E.	IN FIXTURES PER NEC 250 AND 406.
F.	NO BX, AC OR ROMEX TYPE WIRING ALLOWED.
G.	ALL LOW VOLTAGE WIRING TO BE IN CONDUIT UNLESS OTHERWISE APPROVED BY AUTHORITY HAVING JURISDICTION.

WHEN REQUIRED, IT IS THE OWNER'S RESPONSIBILITY TO CONTRACT WITH A COMMISSIONING AUTHORITY TO COMPLY WITH LOCAL CODES.