

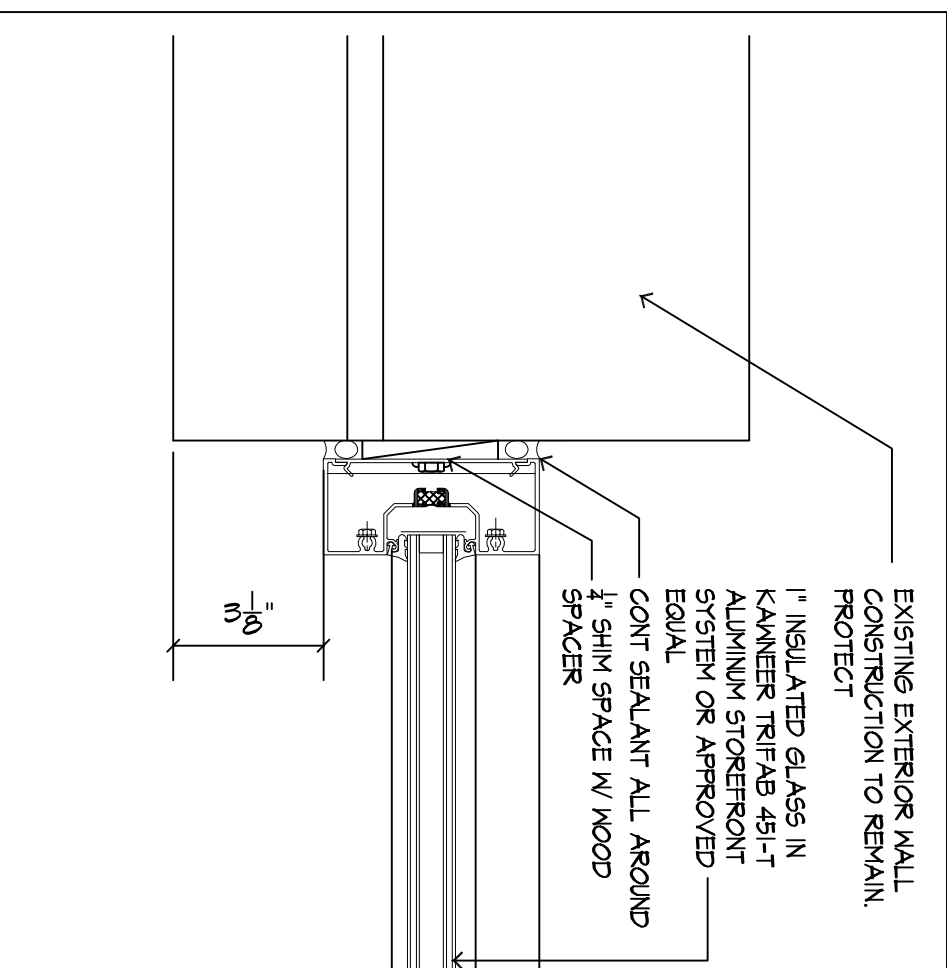
DOOR SCHEDULE										
DOOR #	SIZE	DOOR			FRAME			RATING	HWDE. GROUP	REMARKS
		TYPE	MAT	FIN	MAT	FIN	MAT			
1	PR 3'-0" X 7'-0"	A	ALUM	FAC	AI	ALUM	FAC		1	
1A	PR 3'-0" X 7'-0"	A	ALUM	FAC	AI	ALUM	FAC		2	
2	EXISTING									EXISTING

1 DOOR SCHEDULE

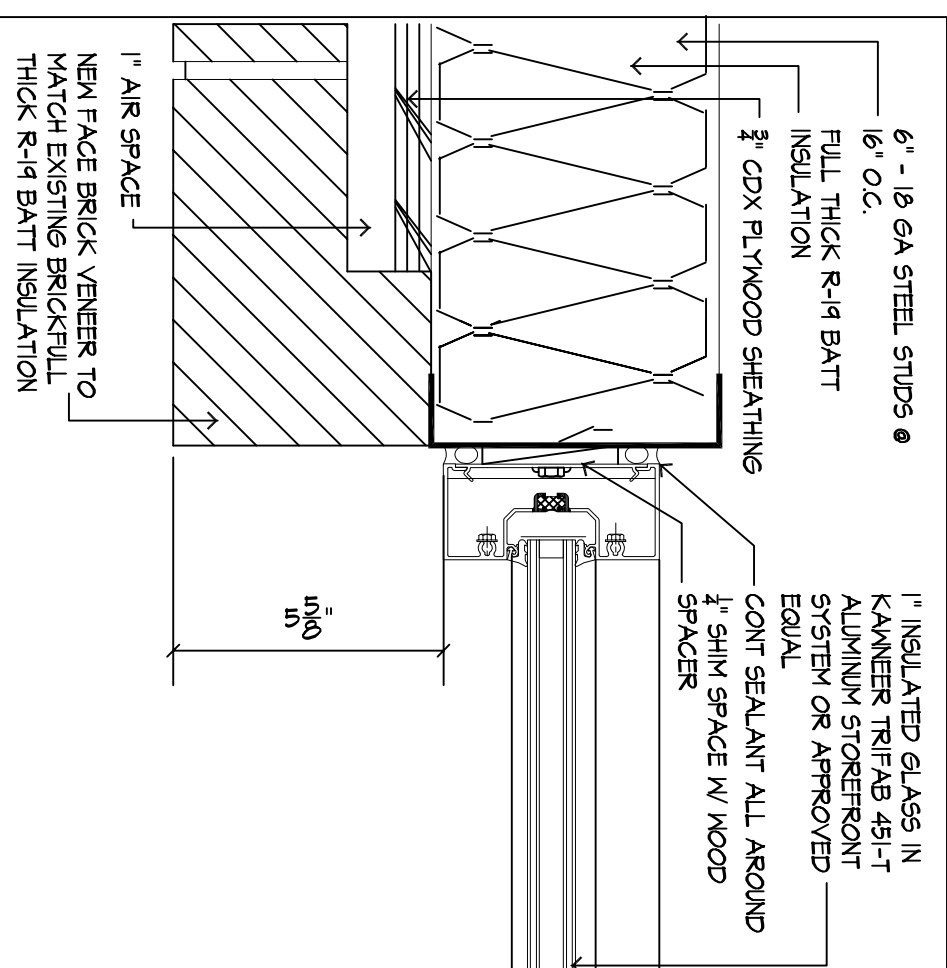
NO.	ROOM NAME	FLOOR		BASE		NORTH		SOUTH		EAST		WEST		CEILING		REMARKS
		MAT	FIN	MAT	FIN	MAT	FIN	MAT	FIN	MAT	FIN	MAT	FIN	MAT	FIN	
01	VESTIBULE	EXIST	EXIST	-	-	-	-	-	-	-	-	-	-	-	-	
02	TENANT AREA	CONC	-	-	-	-	-	-	-	-	-	-	-	-	-	

ROOM FINISH SCHEDULE

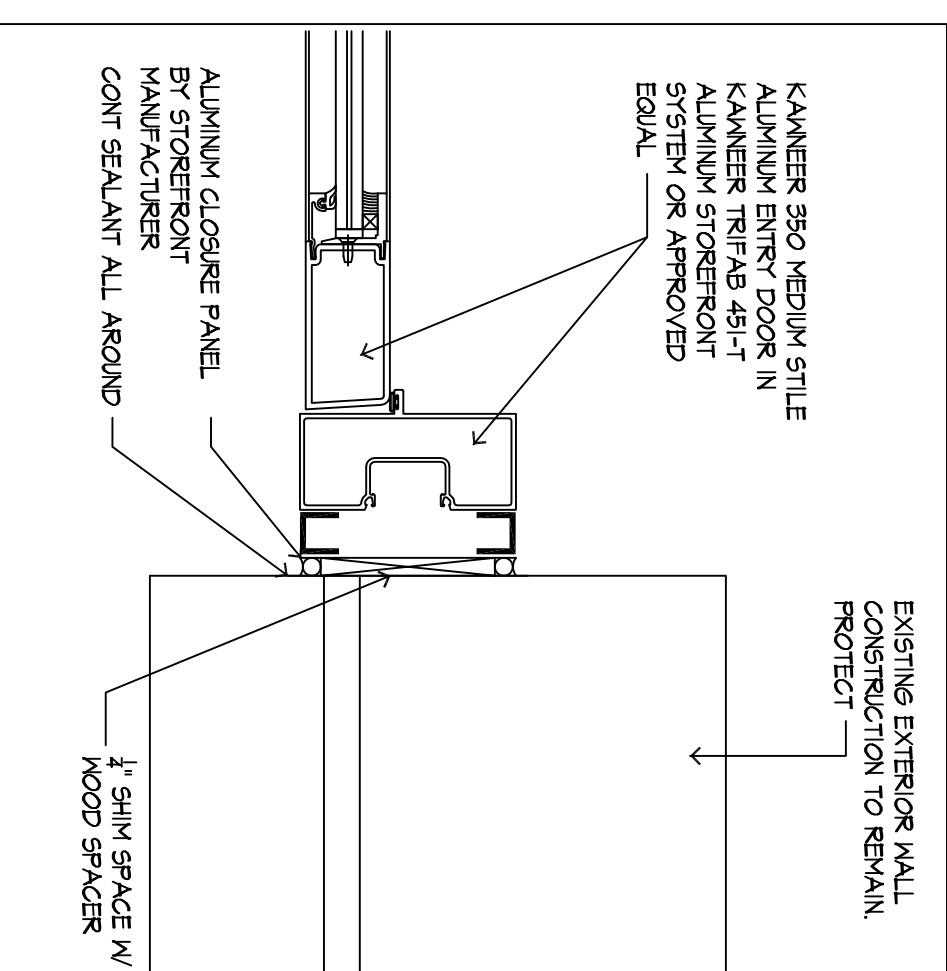
7 ROOM FINISH SCHEDULE



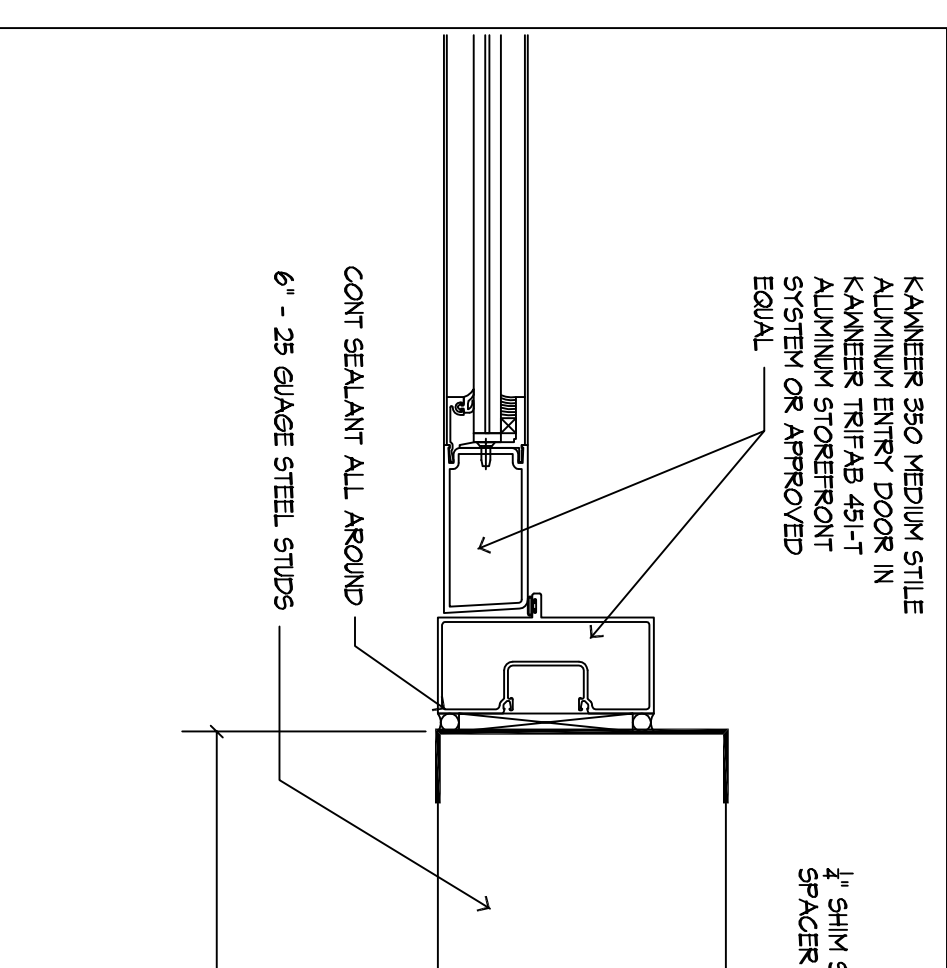
13 JAMB DETAIL  
SCALE: 3/4"=1'-0"



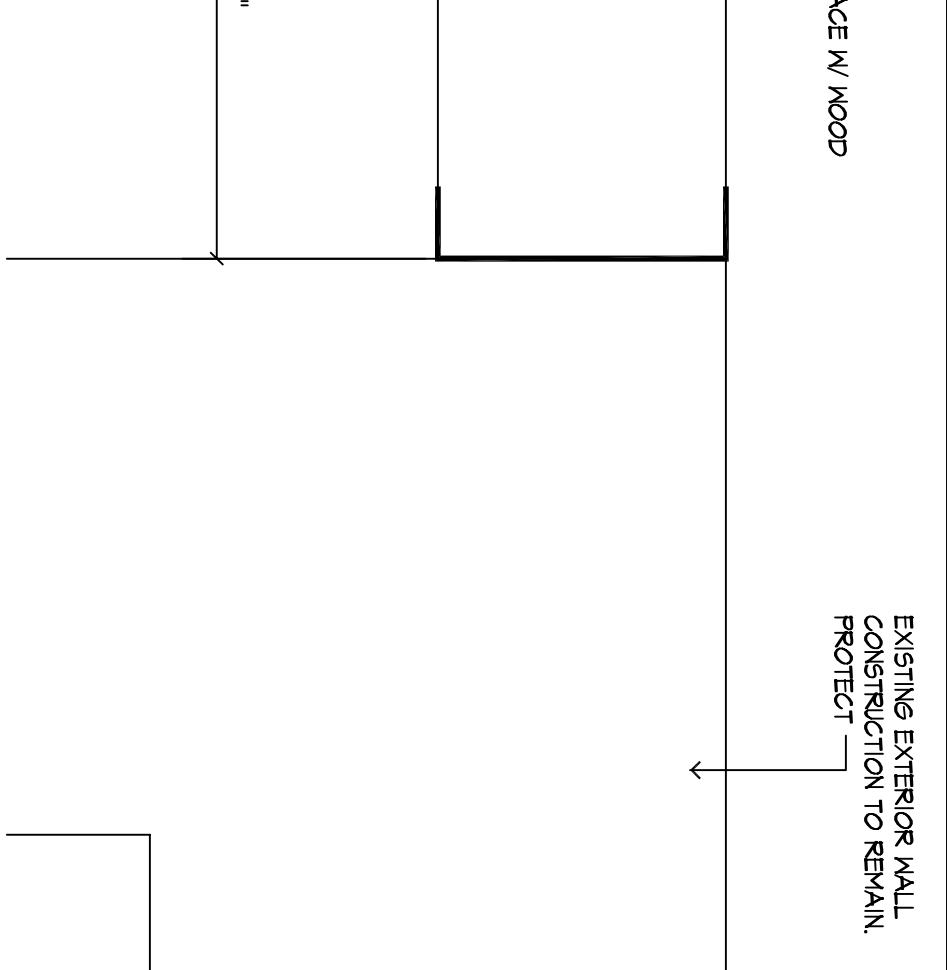
14 JAMB DETAIL  
SCALE: 3/4"=1'-0"



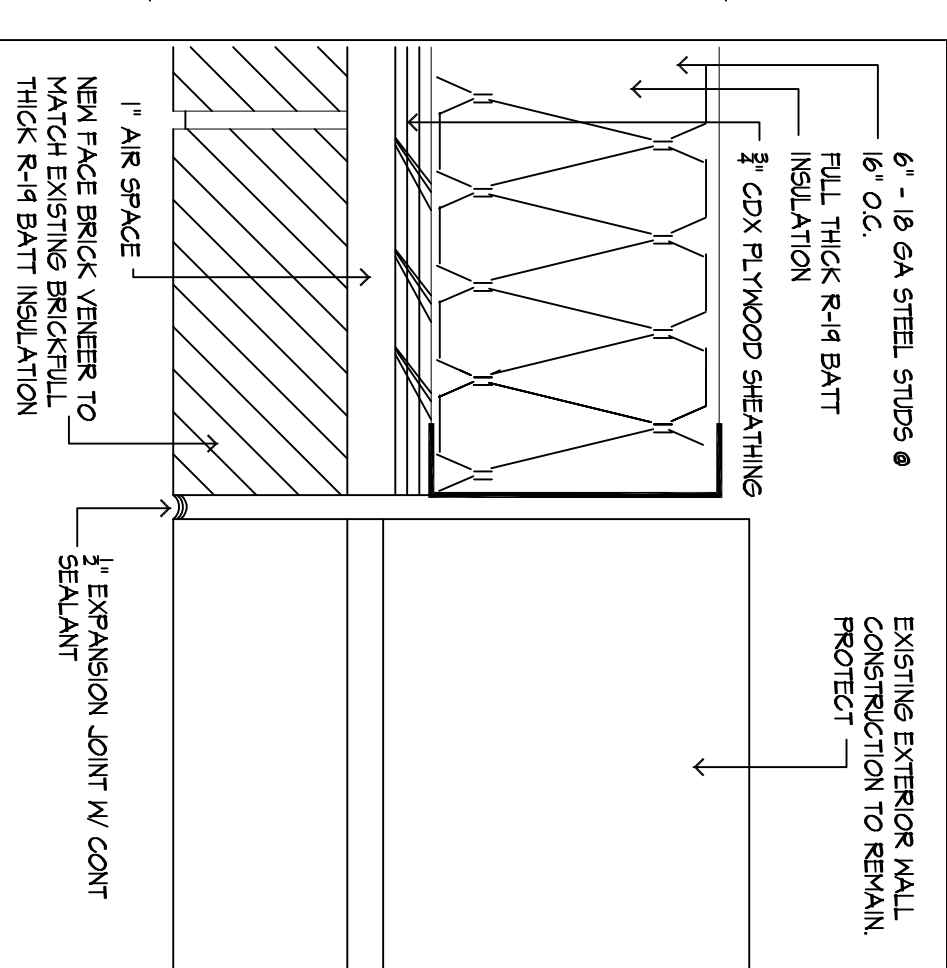
15 JAMB DETAIL  
SCALE: 3/4"=1'-0"



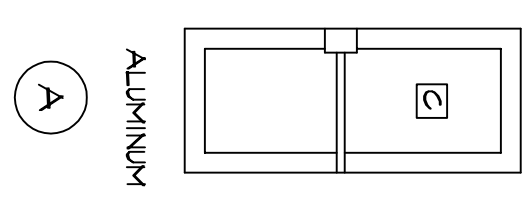
16 JAMB DETAIL  
SCALE: 3/4"=1'-0"



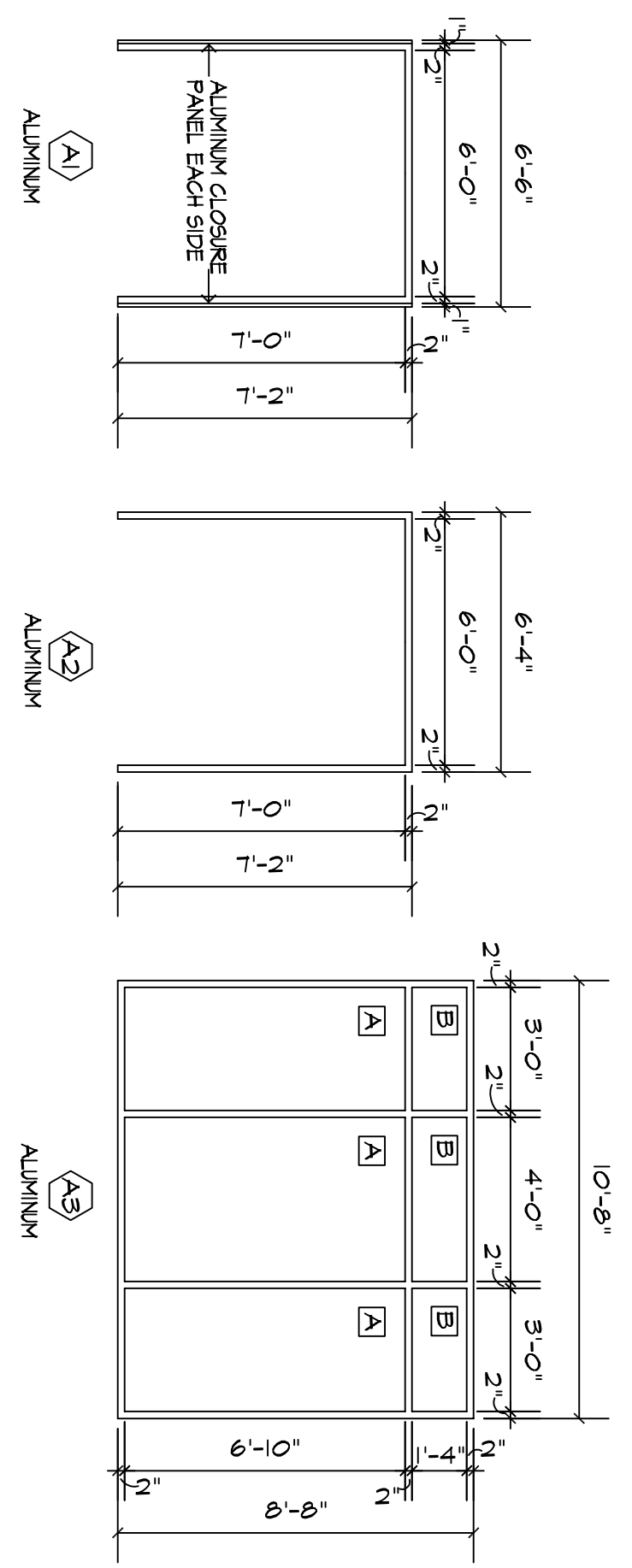
17 NEW TO EXIST WALL DETAIL  
SCALE: 3/4"=1'-0"



18 NEW TO EXIST WALL DETAIL  
SCALE: 3/4"=1'-0"



4 ALUMINUM DOOR TYPES  
SCALE: 1/4"=1'-0"



5 ALUMINUM FRAME TYPES  
SCALE: 1/4"=1'-0"

- ABBREVIATIONS
- CFT CARPET
  - CT CERAMIC TILE
  - EPNT EPOXY PAINT
  - EX EXISTING
  - FAC FACTORY APPLIED FINISH
  - FEP FEP PANEL
  - GB GYPSUM BOARD
  - GLB GLASS BLOCK
  - NA NOT APPLICABLE
  - PNT PAINT
  - TBD TO BE DETERMINED
  - SAT SUSPENDED ACOUSTICAL TILE
  - STR STAINLESS STEEL
  - YVF VINYL SHEET FLOORING
  - MD WOOD
  - MRES WATER RESISTANT GYPSUM BOARD

10 ABBREVIATIONS

- HARDWARE GROUP #1
- CONTINIOUS BRAND HINGE KAMNEER
  - SAM II CONCEALED CLOSER
  - DOR-O-MATIC 1980 CONCEALED ROD EXIT DEVICE KAMNEER STYLE
  - CO-91CO-12 PULL RIM CYLINDER
  - FERKO T81 ALUMINUM THRESHOLD
  - FENKO 1241 KEYPATHSTAMPING
- HARDWARE GROUP #2
- CONTINIOUS BRAND HINGE KAMNEER
  - SAM II CONCEALED CLOSER
  - DOR-O-MATIC 1980 CONCEALED ROD EXIT DEVICE KAMNEER STYLE
  - CO-91CO-12 PULL RIM CYLINDER

11 HARDWARE GROUPS

- GLASS TYPES
- A 1/4" THICK TEMPERED
  - B 1/2" NOMINAL THICKNESS, OUTSIDE FACE 1/4" CLEAR TEMPERED 1/2" AIR SPACE, INSIDE FACE 1/4" TEMPERED GLASS
  - C 1/4" THICK TEMPERED

12 GLASS TYPES

19 NOT USED

20 NOT USED

21 NOT USED

22 NOT USED

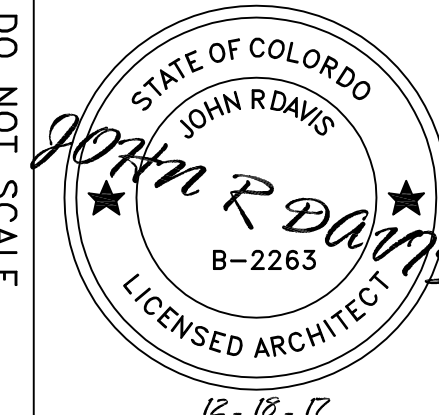
23 NOT USED

24 NOT USED



JOHN DAVIS  
DESIGN GROUP  
ARCHITECTS  
INTERIORS  
PLANNERS

176 TALAMINE COURT  
SUITE 100  
COLORADO SPRINGS,  
COLORADO 80907  
P 719/528-1177  
F 719/444-8409



DO NOT SCALE DRAWINGS FOR CONSTRUCTION

THESE DRAWINGS ARE THE PROPERTY OF JOHN R. DAVIS ARCHITECTS AND ARE TO BE USED ONLY FOR THE PROJECT AND SITE SPECIFICALLY IDENTIFIED HEREIN. ANY REPRODUCTION OR TRANSMISSION OF THESE DRAWINGS FOR ANY OTHER PROJECTS WITHOUT THE WRITTEN PERMISSION OF JOHN R. DAVIS ARCHITECTS IS PROHIBITED.

SCHEDULES, DOOR/FRAME TYPES

**NEW SHELL BUILDING ADDITION FOR:  
INDEX DEVELOPMENT  
MANAGEMENT, LLC  
908 WEST HIGHWAY 50  
PUEBLO, COLORADO**

PROJECT NO. 2017B4  
DATE DECEMBER 18, 2017  
DRAWN BY JRD  
CHECKED JRD  
APPROVED JRD  
REVISED

SHEET  
**A2.1**