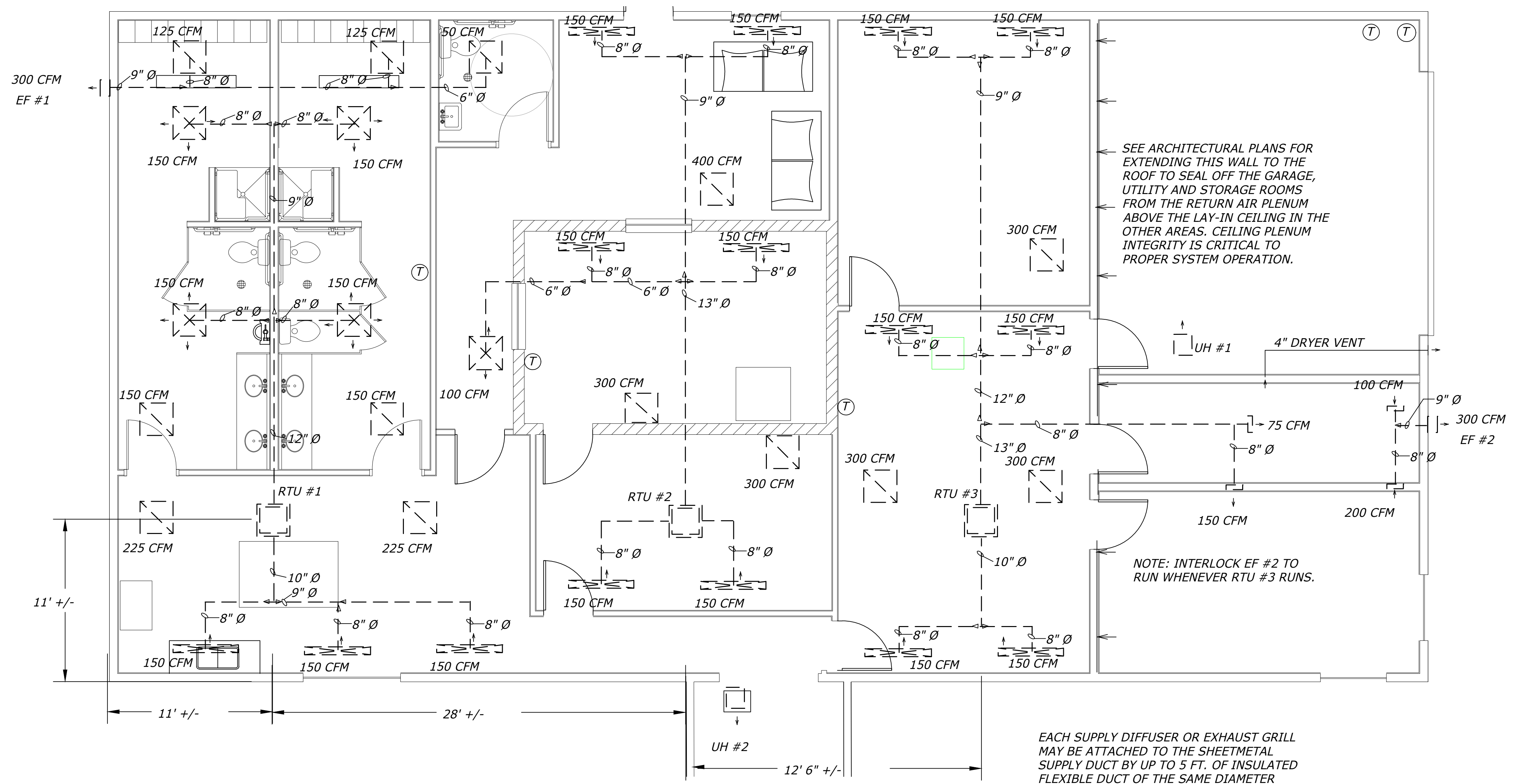


900 > 23.99' 45"  
 54.00 > 23.99' 45"  
 177 > 16.5' 45"  
 45.22.6.111 X ENGR  
 1. CONTRACT 0.2016  
 14589000776.222  
 776.222.14589000  
 8900076.222.4800  
 9822.8798 | 432  
 8222.8798 | 432

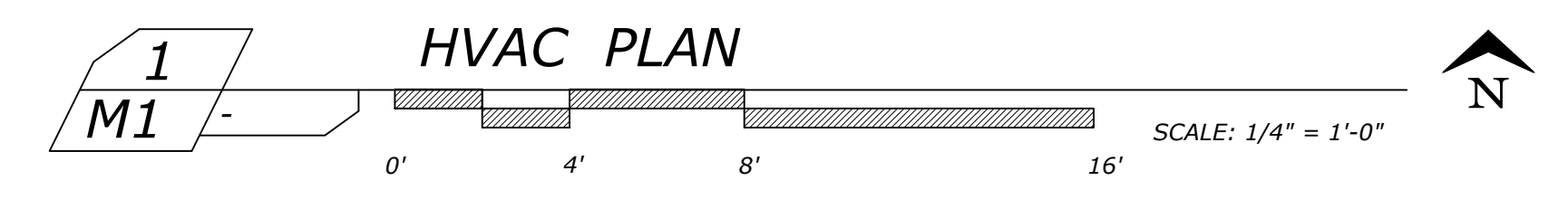
NOTE: INTERLOCK EF #1 TO RUN WHENEVER RTU #1 RUNS.



EACH SUPPLY DIFFUSER OR EXHAUST GRILL MAY BE ATTACHED TO THE SHEETMETAL SUPPLY DUCT BY UP TO 5 FT. OF INSULATED FLEXIBLE DUCT OF THE SAME DIAMETER AS SHOWN. ALL DUCT IS ROUND UNLESS SHOWN OR NOTED OTHERWISE.

ALL AC DIFFUSER VENTS TO BE INSTALLED IN ACOUSTICAL CEILING EXCEPT WHERE NOTED OTHERWISE.

MECHANICAL LEGEND	
	TRANE SINGLE ZONE, PROGRAMMABLE HEATING/COOLING THERMOSTAT, SUPPORTING TWO STAGE HEATING AND FULL ECONOMIZER COOLING OPERATION FOR A PACKAGED ROOF TOP UNIT.
	LINEAR T-BAR, LAY-IN SLOT DIFFUSER WITH SINGLE 1" WIDE SLOT, HORIZONTAL THROW WITH INTEGRATED PLENUM AND SLIDING PATTERN CONTROLLER. PRICE AST SERIES, 4 FT. LENGTH, ARROW INDICATING THROW DIRECTION.
	T-BAR, LAY-IN 2' X 2' DIFFUSER WITH SMOOTH, FLAT FACE PANEL AND ROUND DUCT CONNECTION. ADJUSTABLE 1, 2, 3 OR 4 WAY HORIZONTAL PATTERN CONTROLLER. 22 GAUGE STEEL, EQUAL TO TITUS OMNI, ARROW INDICATING THROW DIRECTION.
	T-BAR, LAY-IN 2' X 2' PERFORATED RETURN/EXHAUST GRILLE.
	DUCT MOUNTED SUPPLY GRILLE WITH VOLUME DAMPER AND DOUBLE DEFLECTION ADJUSTABLE VANES.
	SIDEWALL MOUNTED EXHAUST FAN, GREENHECK MODEL CW, SIZE-080, NOMINAL 300 CFM, DIRECT DRIVE.
	GAS FIRED UNIT HEATER, WITH LPG ANG HIGH ALTITUDE KITS. TWO POINT MOUNTING KIT, CONDENSING DESIGN, STAINLESS STEEL HEAT EXCHANGER, MODINE EFFINITY MODEL PTC 55, 1097 CFM WITH 1/8 HP PROPELLER FAN, 120 VOLT POWER, MINIMUM 93% EFFICIENCY.



**AE LEUKEN, LLC**  
 ARCHITECTURAL ENGINEERS  
 1122 N. EL PASO ST  
 COLORADO SPRINGS CO, 80903  
 PHONE : (719) 398 1155

**MILE HIGH ROSE LLC**  
 180 COUNTY RD 599  
 WALSENBERG, CO 81089

NO.	DATE	DESCRIPTION

DATE: 05/15/2015  
 CHECKED BY: JJG  
 PROJECT NO: 14-2017  
 SHEET: MAIN HVAC PLAN

**M1**