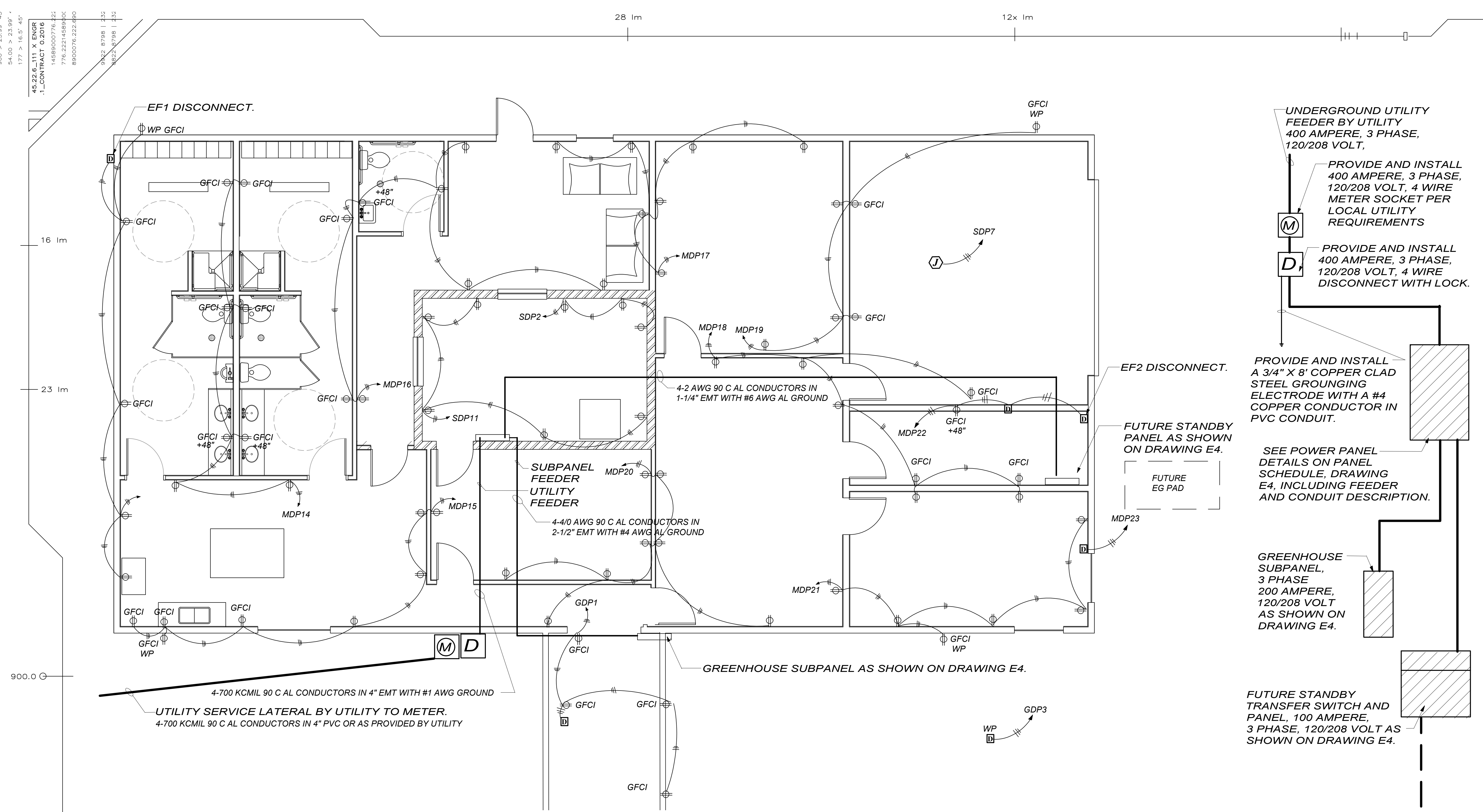


900 > 23.99' 45  
 54.00 > 23.99' 45  
 177 > 16.5' 45  
 45.22.6.111 X ENGR  
 1. CONTRACT 0.2016  
 14589000776.221  
 776.22214589000  
 8900076.222.480  
 9823.8798 | 135  
 8228.9796 | 132

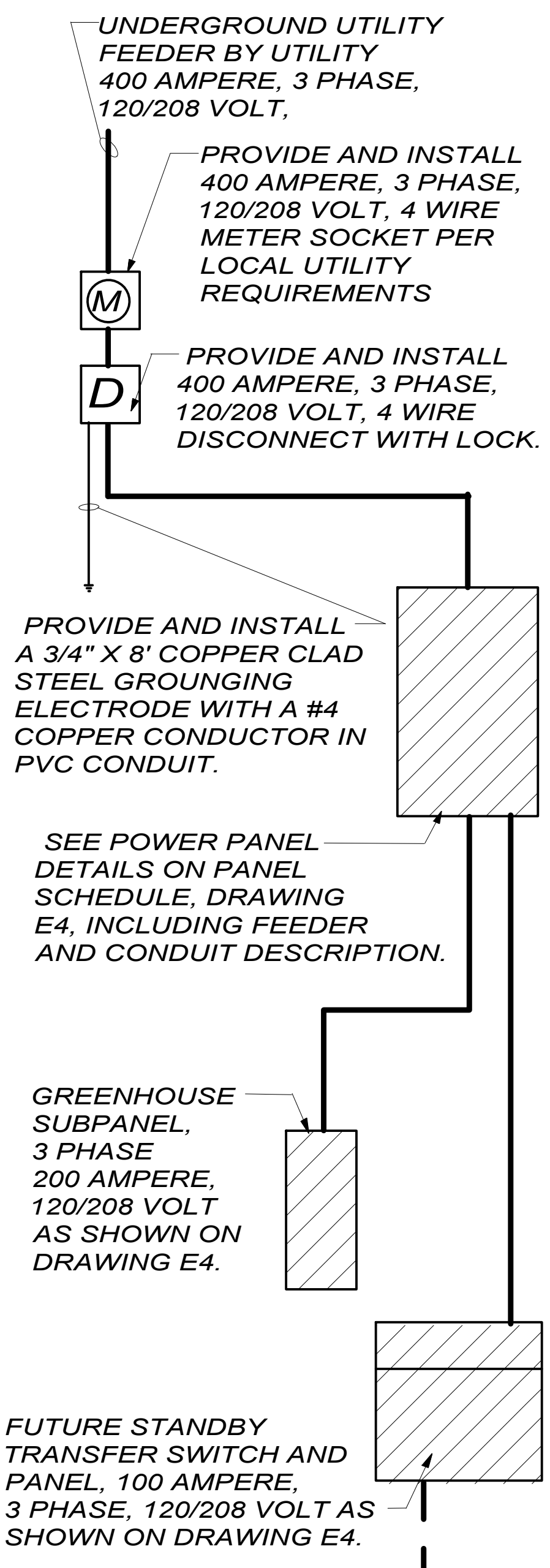


ANNEX IS 60' LONG AND THE REMAINING PORTION IS SHOWN ON DRAWING E3.

RTU #1, #2 & #3 REQUIRE THREE PHASE 30 AMPERE FEEDERS ON ROOF. SEE MECHANICAL PLANS FOR PRECISE LOCATION.

FUTURE ENGINE GENERATOR SHOWN SHALL BE SUPPORTED BY INSTALLATION OF AN EXTERIOR PAD, A SPLICE BOX IN THE STANDBY FEEDER TO ALLOW FOR INSTALLATION OF THE STANDBY SWITCH, AND A LPG FUEL SUPPLY CONNECTION. COORDINATE THESE ITEMS WITH THE GENERAL AND MECHANICAL CONTRACTORS TO ALLOW FOR FUTURE INSTALLATION OF THE STANDBY SYSTEM WITHOUT SIGNIFICANT CONSTRUCTION OR A POWER INTERRUPTION OVER TWO HOURS.

DESIGN BASIS IS A 30kW KOHLER LPG GENSET WITH A 4E5.6 ALTERNATOR, 74" L X 33" W X 46" H OVERALL SIZE



EG

# ONE LINE DIAGRAM

**AE LEUKEN, LLC**  
 ARCHITECTURAL ENGINEERS  
 1122 N. EL PASO ST  
 COLORADO SPRINGS CO, 80903  
 PHONE : (719) 398 1155

**MILE HIGH ROSE LLC**  
 180 COUNTY RD 599  
 WALSENBURG, CO 81089

NO.	DATE	DESCRIPTION

DATE: XX/XX/XXXX  
 CHECKED BY: JJG  
 PROJECT NO: PROJECT#  
 SHEET: MAIN ELEC PLAN

# E2

**1 MAIN ELECTRICAL POWER PLAN**  
 E2  
 SCALE: 1/4" = 1'-0"  
 N