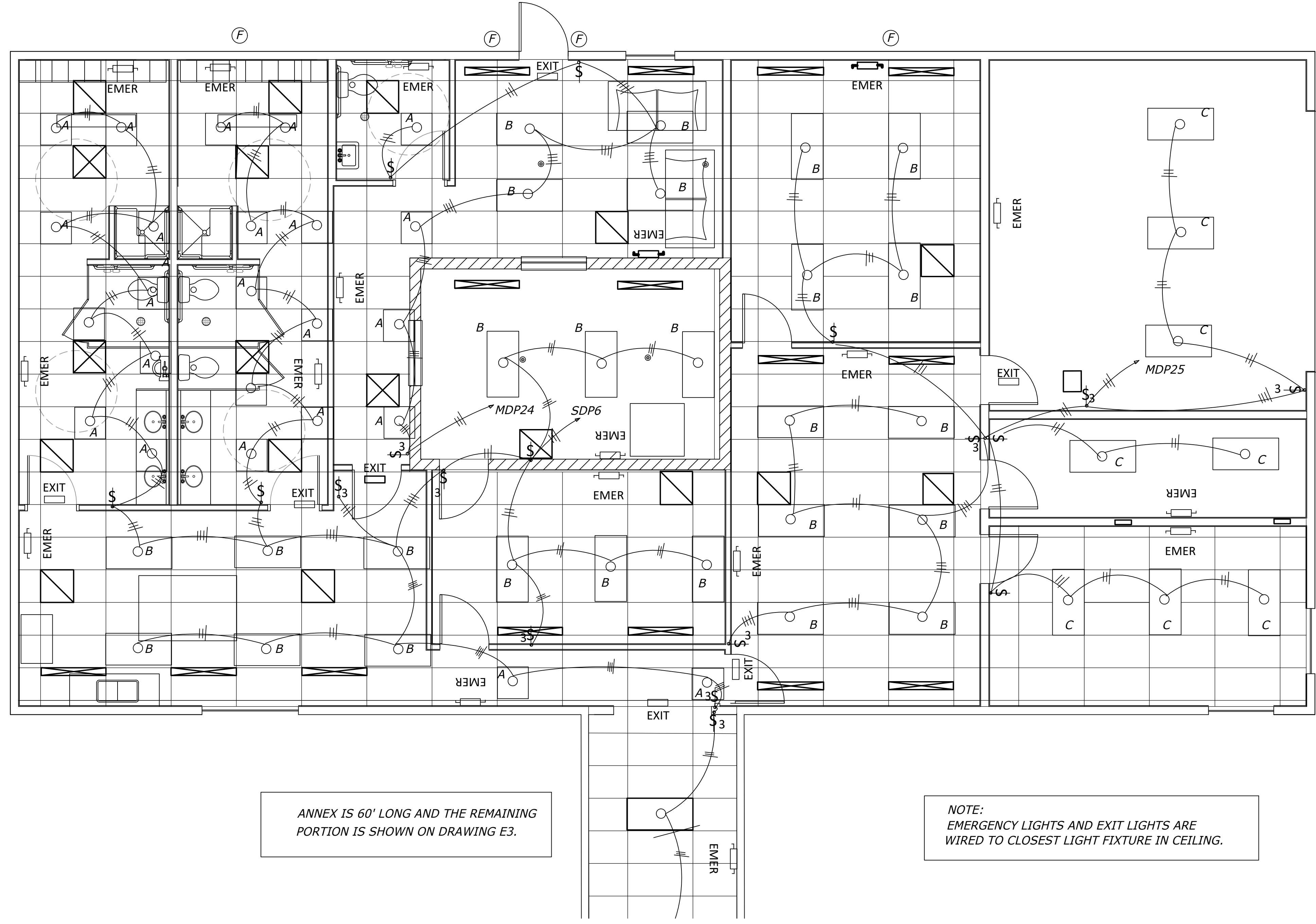


900 > 23.99' 45"
 54.00 > 23.99' 45"
 177 > 16.5' 45"
 45.22.6.111 X ENGR
 1 CONTRACT 0.2016
 14589000776.222
 776.22214589000
 8900076.222.480
 9822.8798 | 432
 8222.8798 | 432
 16 im
 23 im
 900.0
 900.0
 45°

NOTE: EXTERIOR WALL LIGHTS ARE MOUNTED 8' +/- ABOVE GRADE WITH CIRCUITING AS SHOWN ON DRAWING E3.



ANNEX IS 60' LONG AND THE REMAINING PORTION IS SHOWN ON DRAWING E3.

NOTE: EMERGENCY LIGHTS AND EXIT LIGHTS ARE WIRED TO CLOSEST LIGHT FIXTURE IN CEILING.

NOTE: REF. E4 FOR LIGHTING SCHEDULE

1 LIGHTING PLAN
E1
 SCALE: 1/4" = 1'-0"
 N



AE LEUKEN, LLC
 ARCHITECTURAL ENGINEERS
 1122 N. EL PASO ST
 COLORADO SPRINGS CO, 80903
 PHONE : (719) 398 1155

MILE HIGH ROSE LLC
 180 COUNTY RD 599
 WALSENBURG, CO 81089

NO.	DATE	DESCRIPTION

DATE: XX/XX/XXXX
 CHECKED BY: JJG
 PROJECT NO: PROJECT#
 SHEET: LIGHTING PLAN

E1