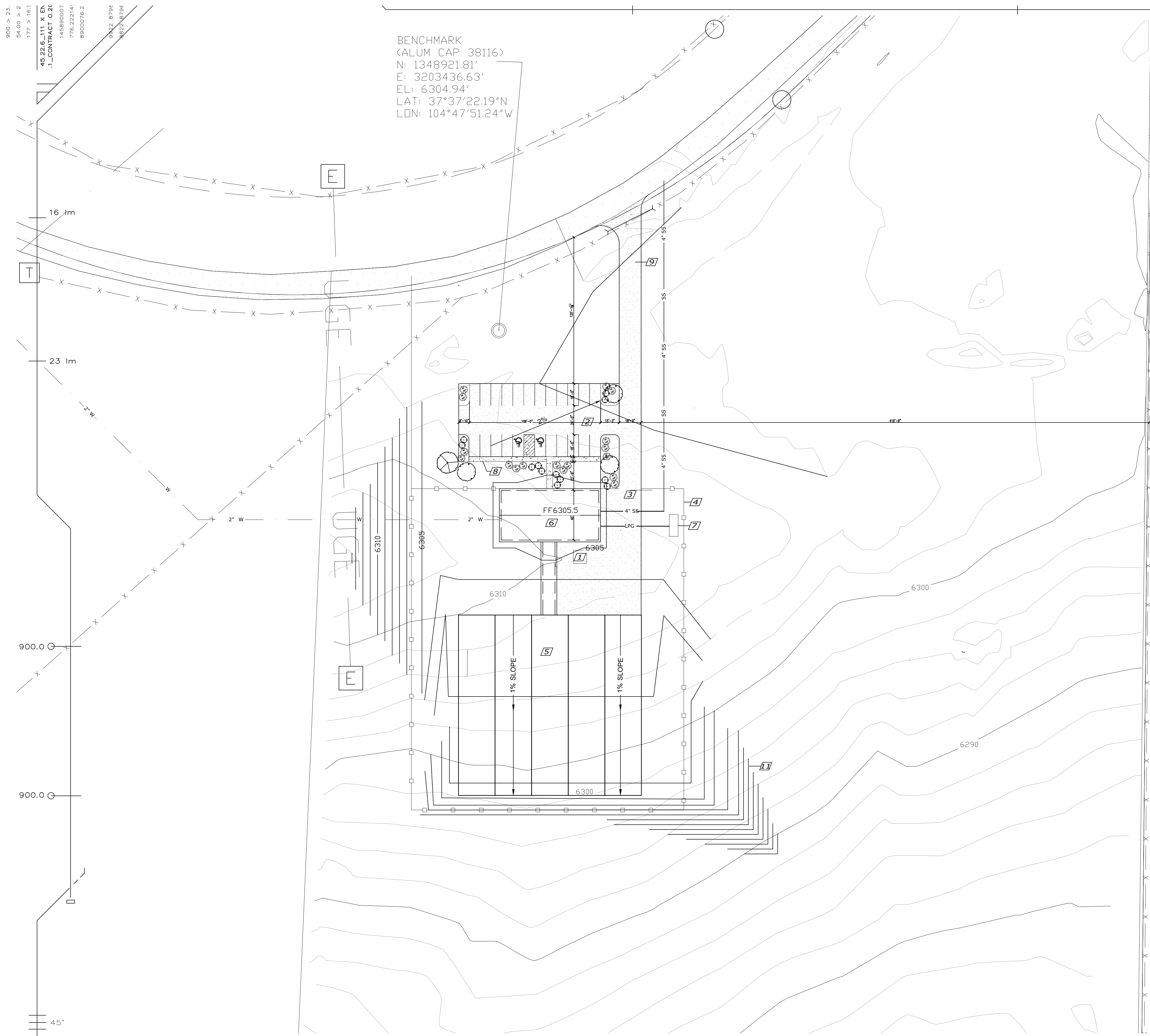


900 > 23.  
54.00 > 2  
177 > 16.1  
45.22.6\_111 X EK  
1\_1\_CONTRACT C2  
145890007  
776.22214  
8900076.2  
9122 8796  
822 8796

BENCHMARK  
(ALUM CAP 38116)  
N: 1348921.81'  
E: 3203436.63'  
EL: 6304.94'  
LAT: 37°37'22.19"N  
LON: 104°47'51.24"W



**GENERAL NOTES:**

- A. FIELD VERIFY EXISTING CONDITIONS
- KEYED NOTES:**
- 1 WATER TANK, SEE PLUMBING SHEET FOR SIZE AND INFO
  - 2 (P) PARKING LAYOUT MIN OF 22 PARKING SPACES 2 HANDICAP
  - 3 (P) GATE W/ AUTOMATIC OPENING SLIDER
  - 4 (P) 8'-0" HIGH METAL FENCE, SEE ATTACHED DETAILS
  - 5 (P) GREENHOUSES EA. 35'-0" WIDE, 150' LONG COVERED ROOF POLY, GRAVEL FLOOR. CONC. SLAB & CONC. POST FULLY MECHANICALLY CONTROL FROM MAIN BUILDING
  - 6 (P) MAIN BUILDING APROX. 40'-8" x 80'-0" FULL PACKAGING AND DRYING FACILITIES & PUBLIC AND PRIVATE RESTROOM W/ ADA COMPLIANT
  - 7 (P) LPG TANK PROVIDED AND INSTALLED BY OTHERS
  - 8 (P) CONCRETE SIDEWALK, AND ADA ACCESS
  - 9 (P) GRAVEL CLASS 6 ROAD BASE 6" MIN
  - 10 (P) SCARIFY 12" AND RECOMPACT TO 95% OR CDOT SPECS
  - 11 ADD FILL AT (P) GRADES

**LEGEND:**

- (E) MINOR CONTOURS
- (E) MAJOR CONTOURS
- (P) CONTOURS
- 4" SS (P) 4" SANITARY SEWER LINE TO CITY MAIN
- 2" W (P) 2" WATER LINE
- LPG (P) GAS LINE
- (P) TREES AND SHRUBS (LANDSCAPE AREA)



**AE LEUKEN, LLC**  
ARCHITECTURAL ENGINEERS

1122 N. EL PASO ST  
COLORADO SPRINGS CO, 80903  
PHONE: (719) 398 1155

**MILE HIGH ROSE LLC**  
180 COUNTY RD 599  
WALSENBURG, CO 81089

NO.	DATE	DESCRIPTION

DATE: XX/XX/XXXX  
CHECKED BY: JJG  
PROJECT NO: PROJECT#  
SHEET: CIVIL PLAN

**C2**

